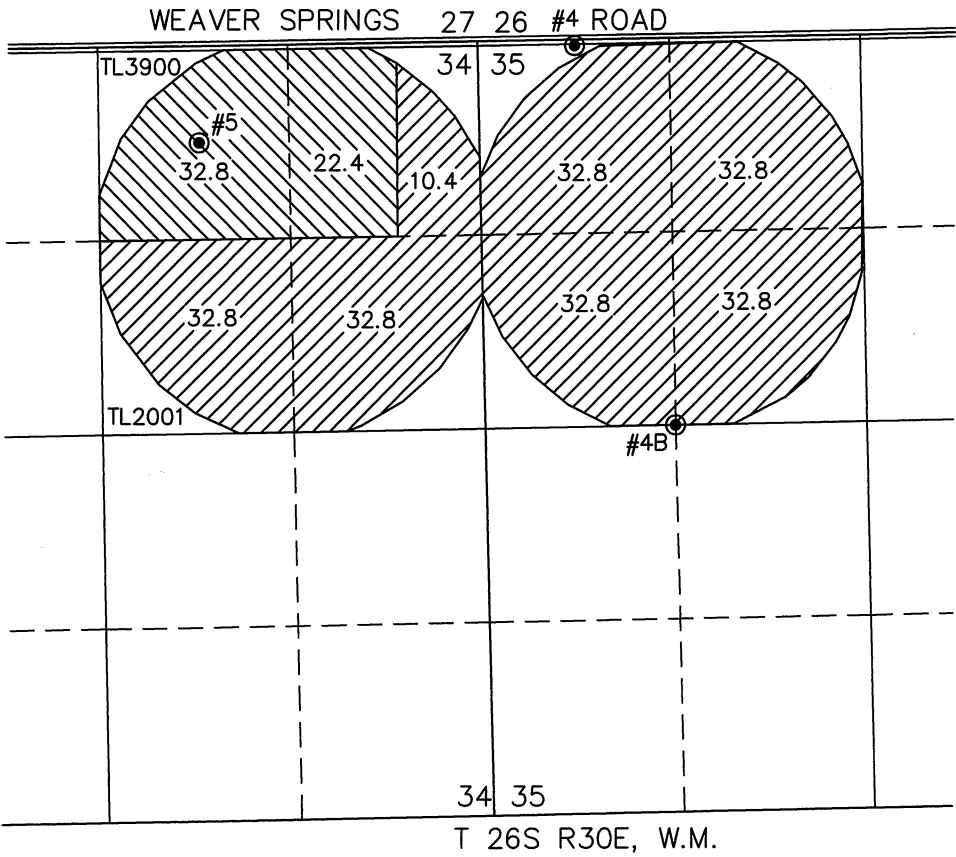
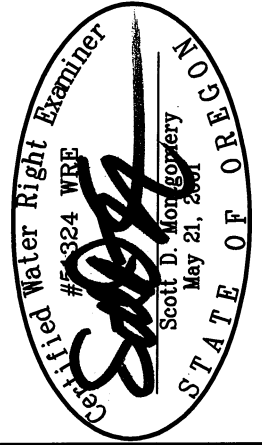
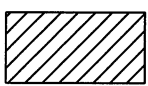
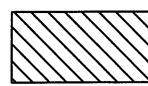


MAP TO ACCOMPANY APPLICATION
TO ADD A POINT OF
APPROPRIATION
FOR
MARY CARPENTER TRUST

"FROM" TAX LOTS 2001 F& 3900 IN
SECTION 35, TOWNSHIP 25 SOUTH, RANGE 30 EAST, W.M.
HARNEY COUNTY, OREGON



 207.2 ACRES WATER RIGHTS FROM C #89368 (G-11242) PRIORITY DATE 1/23/1991 REMAIN, AS SHOWN.

 55.2 ACRES WATER RIGHTS FROM C #65752 (G-1530) PRIORITY DATE 11/27/1959 REMAIN, AS SHOWN.

- HARN 1099 PERMIT G-11242
- WELL #4 LOCATED IN THE NW 1/4 NW 1/4 SECTION 35 AND 40 FEET SOUTH AND 670 FEET EAST FROM THE NW CORNER.
- HARN 1863 PERMIT G-11242 & G-1530
- WELL #5 LOCATED IN THE NW 1/4 NE 1/4 SECTION 34 AND 660 FEET SOUTH AND 700 FEET EAST FROM THE N 1/4 CORNER.

- HARN 52585 PROPOSED
- WELL #4B LOCATED IN THE SW 1/4 NW 1/4 SECTION 35 AND 2640 FEET SOUTH AND 1320 FEET EAST FROM THE NW CORNER.

THIS MAP IS FOR THE PURPOSE OF LOCATING A WATER RIGHT ONLY AND HAS NO INTENT TO PROVIDE LEGAL DIMENSIONS OR THE LOCATION OF PROPERTY LINES.

ALL POINTS ENGINEERING
& SURVEYING, INC.



P.O. BOX 767
TERREBONNE, OREGON 97760
(541) 548-5833 PH
Scott@APEandS.com
www.APEandS.com

PROJECT No. 16-102

PREPARED AT THE REQUEST OF:
MARY CARPENTER TRUST
29328 WEAVER SPRINGS ROAD
BURNS, OR 97720