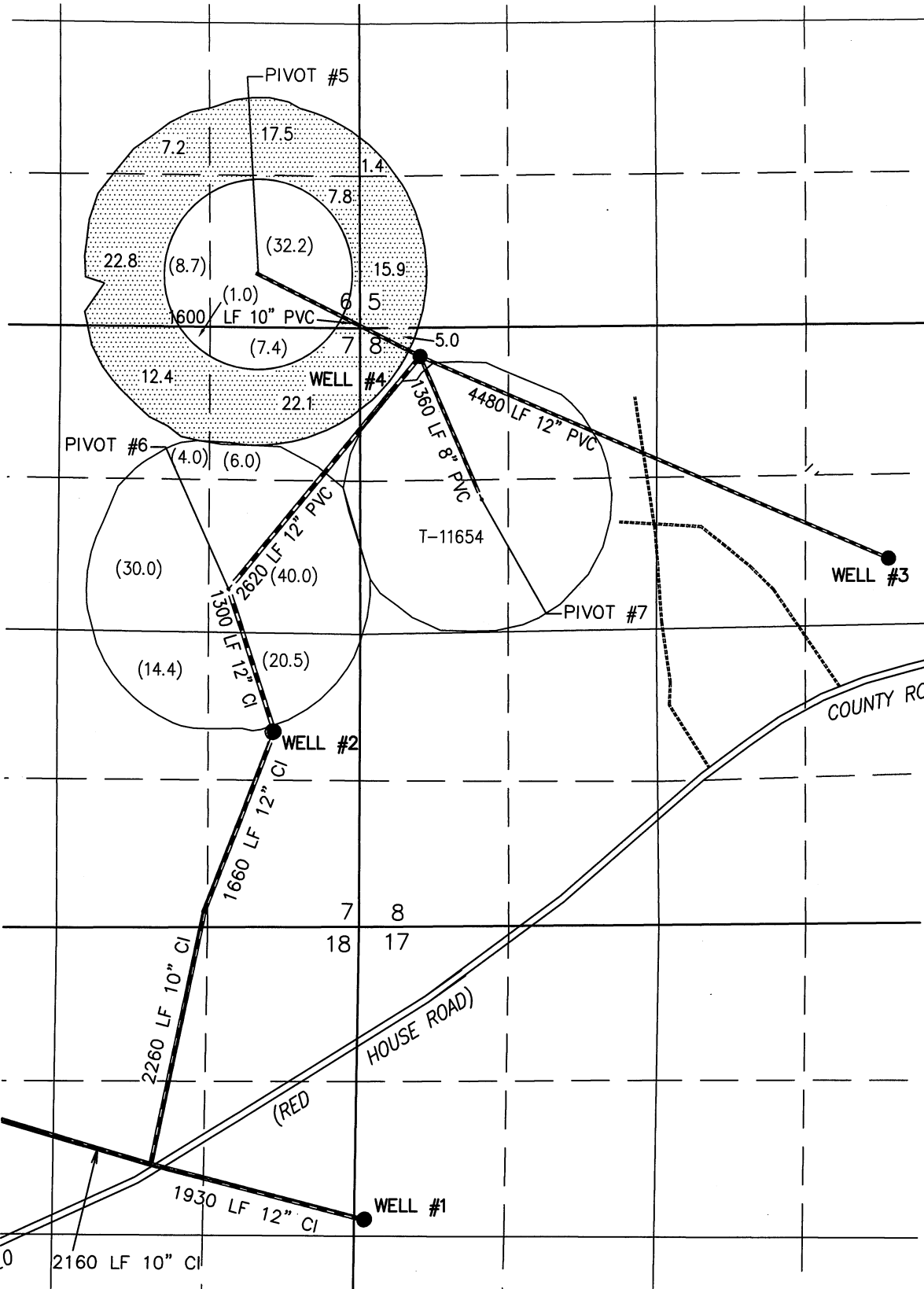


**TRANSFER MAP TO ACCOMPANY APPLICATION
TO CHANGE PLACE OF USE & POINTS OF
APPROPRIATION FOR
JRS PROPERTIES III, LLP**

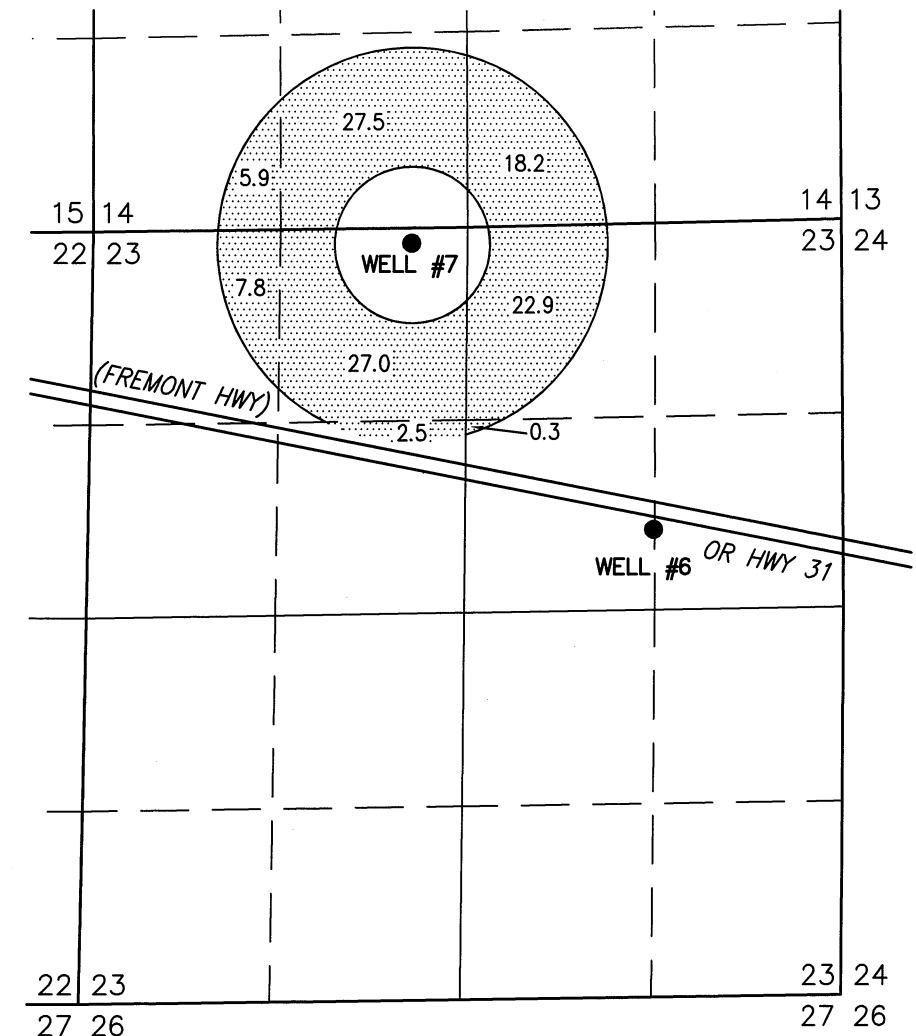
"FROM" TAX LOT 500
IN SECTIONS 5, 7, 8, 17, AND 18, TOWNSHIP 33 SOUTH, RANGE 19 EAST, W.M.
LAKE COUNTY, OREGON



- WELL #1 (LAKE 1667-G15037) IN THE SW 1/4 NW 1/4 SECTION 17, T33S R19E, W.M. LOCATED 2600 FEET SOUTH AND 50 FEET EAST FROM THE NW CORNER OF SECTION 17.
- WELL #2 (LAKE 51182-G15037) IN THE NE 1/4 SE 1/4 SECTION 7, T33S R19E, W.M. LOCATED 1690 FEET SOUTH AND 770 FEET WEST FROM THE SE CORNER OF SECTION 7.
- WELL #3 (LAKE 51588-BOTH) IN THE SE 1/4 NE 1/4 SECTION 8, T33S R19E, W.M. LOCATED 2048 FEET SOUTH AND 563 FEET WEST FROM THE NE CORNER OF SECTION 8.
- WELL #4 (LAKE 51031-BOTH) IN THE NW 1/4 NW 1/4 SECTION 8, T33S R19E, W.M. LOCATED 325 FEET SOUTH AND 4704 FEET WEST FROM THE NE CORNER OF SECTION 8.

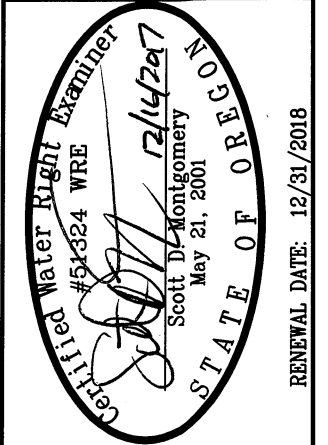
112.1 ACRES PRIMARY RIGHTS FROM WELL 1 OF CERTIFICATE #88583 (G-15510) POU & POA TRANSFERRED OUT, AS SHOWN. (261.6) ACRES REMAIN.

"TO" TAX LOT 200
IN SECTIONS 14 & 23, TOWNSHIP 34 SOUTH, RANGE 19 EAST, W.M.
LAKE COUNTY, OREGON



- WELL #7 (LAKE 52463 PROPOSED) IN THE NE 1/4 NW 1/4 SECTION 23, T34S R19E, W.M. LOCATED 105 FEET SOUTH AND 3000 FEET WEST FROM THE NE CORNER OF SECTION 23.

THIS MAP IS FOR THE PURPOSE OF LOCATING A WATER RIGHT ONLY AND HAS NO INTENT TO PROVIDE LEGAL DIMENSIONS OR THE LOCATION OF PROPERTY LINES.



**ALL POINTS ENGINEERING
& SURVEYING, INC.**

P.O. BOX 767
TERREBONNE, OREGON 97760
(541) 548-5833 PH
Scott@APEandS.com
www.APEandS.com

PROJECT No. 15-128

PREPARED AT THE REQUEST OF:
JRS PROPERTIES III, LLP
P.O. BOX 27
BOISE, ID 83707