

RECEIVED
 FEB 12 2018
 OWRD

- MAP 2 LEGEND**
- Delivery System
 - Unchanged 59063 Priority 9/2/1976
 - Acres Removed from 62259 Priority 4/22/1976
 - 59063 OFF
 - 59063 ON
 - OFF 2993
 - ON 2993
 - Cornerstone_Farms_Tax_Lots
 - Points of Diversion
 - Unchanged 62262 Priority 6/9/1976
 - Unchanged 62259 Priority 4/22/1976
 - Water Rights to 62259 Priority 4/22/1976
 - Acres Removed from 62262 Priority 6/9/1976

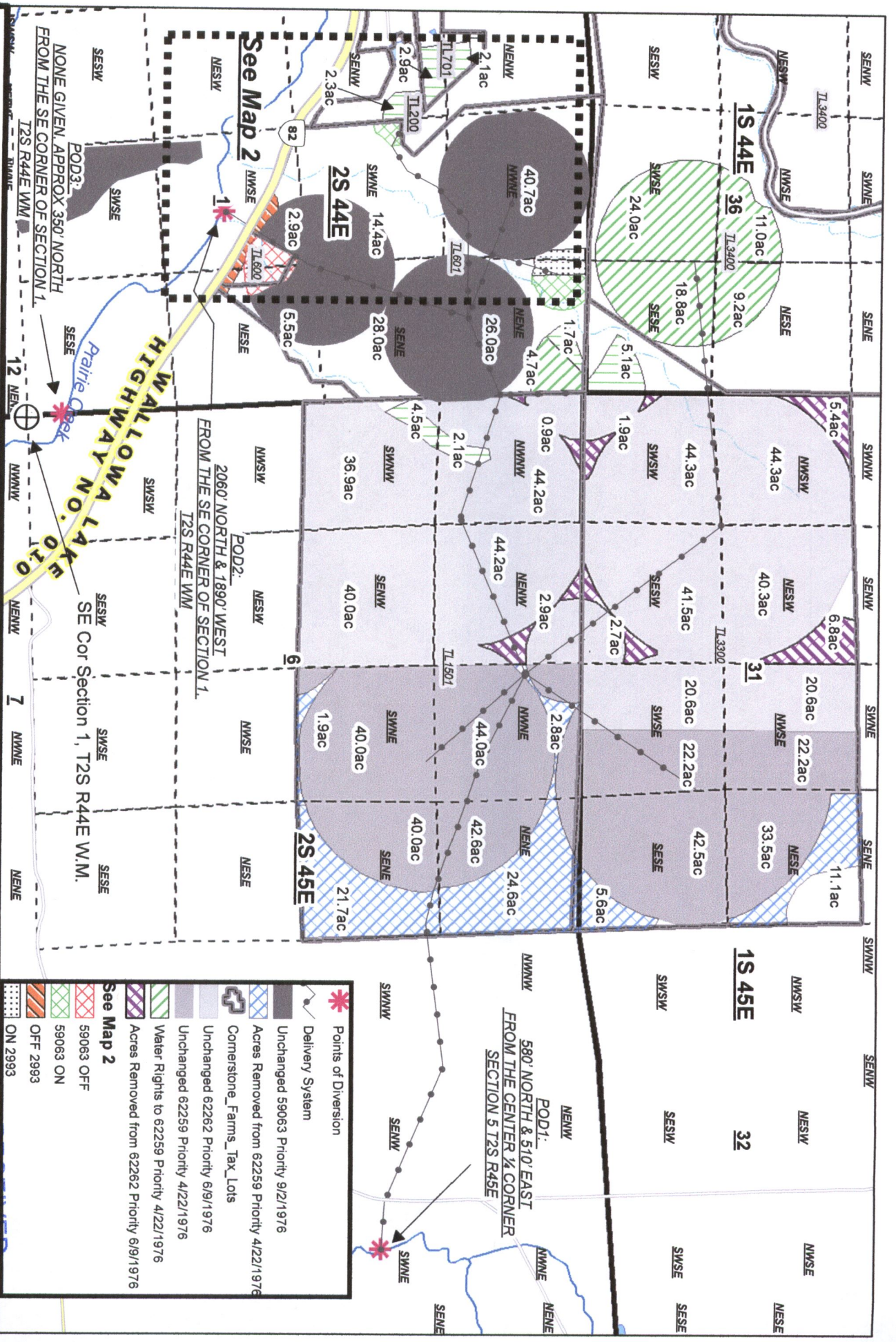
**Cornerstone Farms
 2018 Temp Transfer Map 2**

Map Disclaimer:
 This product is for informational purposes and may not have been prepared for, or be suitable for legal, engineering, or surveying purposes. Users of this information should review or consult the primary data and information sources to ascertain the usability of the information.
 This map is not intended to display property lines

Disclaimer: This listing is the result of a manual search of the records of the Watermaster's Plat Cards and the WRRIS database. The listing has not been field checked. That a right is of record is no guarantee that is has not been abandoned under the conditions of ORS 540.610. The plat card records of listed by the 40.0 acre quarter-quarter within a section. If the water right listed within a quarter-quarter is on more than one tax lot, this office has not itemized that water rights for each tax lot - only a survey could accurately depict how much of the water rights are on each tax lot.

1:10,000





2018 - Cornerstone Farms Temp Transfer Map 1/2

Map Disclaimer: This map is the result of a limited search of the records of the Watermaster's Plat Cards and the VWS database. The platting has not been field checked. The information on this map is for informational purposes only and may not have been prepared for, or be suitable for, legal, engineering, or surveying purposes. Users of this information should review or consult the primary data and information sources to ascertain the accuracy of the information shown on this map. This map is not intended to display property lines.

Challenges: This being in the state of a limited search of the records of the Watermaster's Plat Cards and the VWS database, the platting has not been field checked. The information on this map is for informational purposes only and may not have been prepared for, or be suitable for, legal, engineering, or surveying purposes. Users of this information should review or consult the primary data and information sources to ascertain the accuracy of the information shown on this map. This map is not intended to display property lines.

Legend:

- Points of Diversion
- Delivery System
- Unchanged 59063 Priority 9/21/976
- Acres Removed from 62259 Priority 4/22/1976
- Cornerstone_Farms_Tax_Lots
- Unchanged 62262 Priority 6/9/1976
- Unchanged 62259 Priority 4/22/1976
- Water Rights to 62259 Priority 4/22/1976
- Acres Removed from 62262 Priority 6/9/1976
- See Map 2
- 59063 OFF
- 59063 ON
- OFF 2993
- ON 2993

1:15840

REC 1 2 2018

OWRD

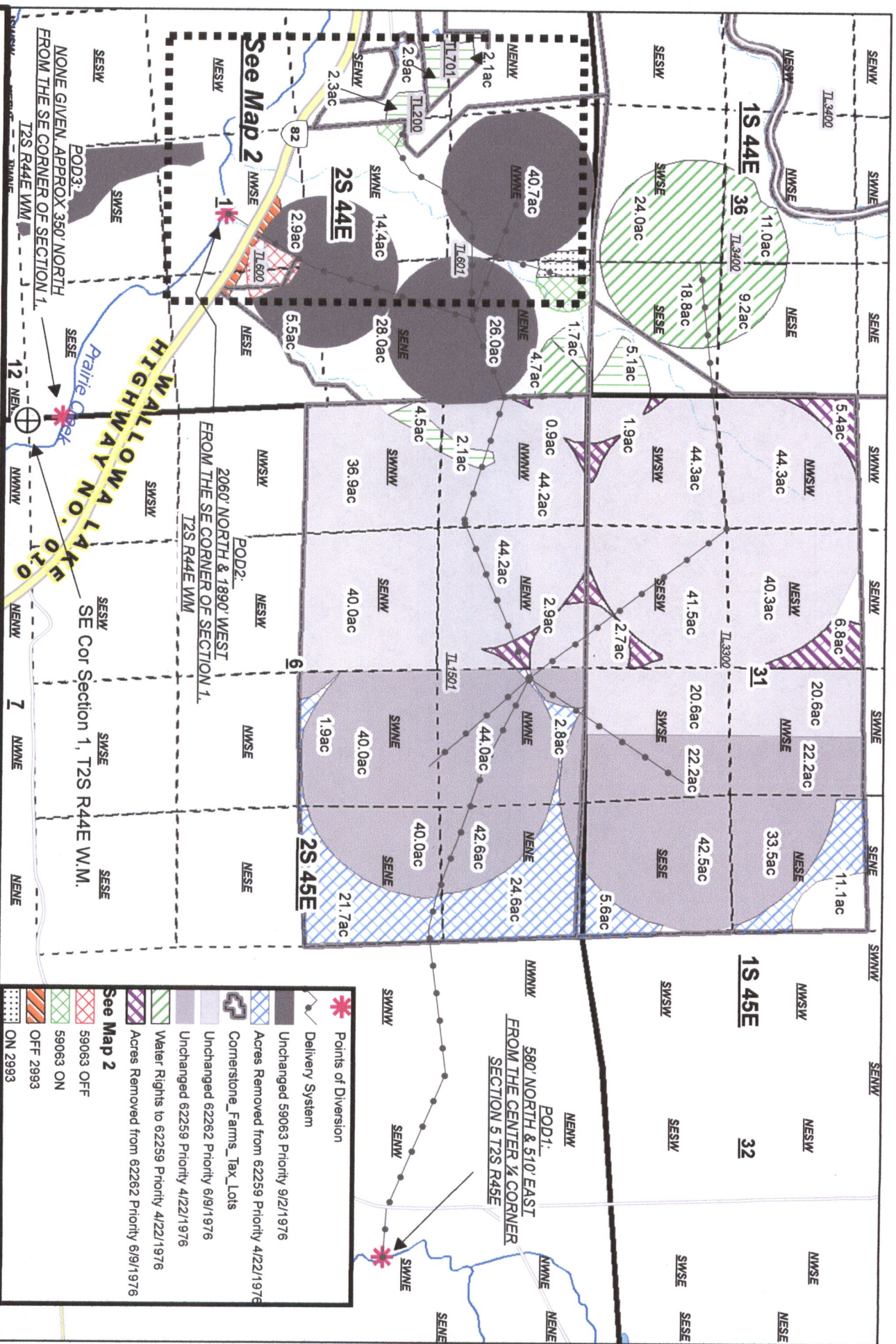
See Map 2
NONE GIVEN, APPROX 350' NORTH FROM THE SE CORNER OF SECTION 1
12S R44E WM

2060' NORTH & 1890' WEST FROM THE SE CORNER OF SECTION 1, T2S R44E WM

580' NORTH & 510' EAST FROM THE CENTER 1/4 CORNER SECTION 5 T2S R45E

WALLOW LAKE NO. 010
Prairie Creek

SE Cor Section 1, T2S R44E W.M.



2018 - Cornerstone Farms Temp Transfer Map 1/2

None Given, Approx 350' North from the SE Corner of Section 1, T2S R44E W.M.

	Points of Diversion
	Delivery System
	Unchanged 59063 Priority 9/21/1976
	Acres Removed from 62259 Priority 4/22/1976
	Cornerstone_Farms_Tax_Lots
	Unchanged 62262 Priority 6/9/1976
	Unchanged 62259 Priority 4/22/1976
	Water Rights to 62259 Priority 4/22/1976
	Acres Removed from 62262 Priority 6/9/1976
	See Map 2
	59063 OFF
	59063 ON
	OFF 2993
	ON 2993

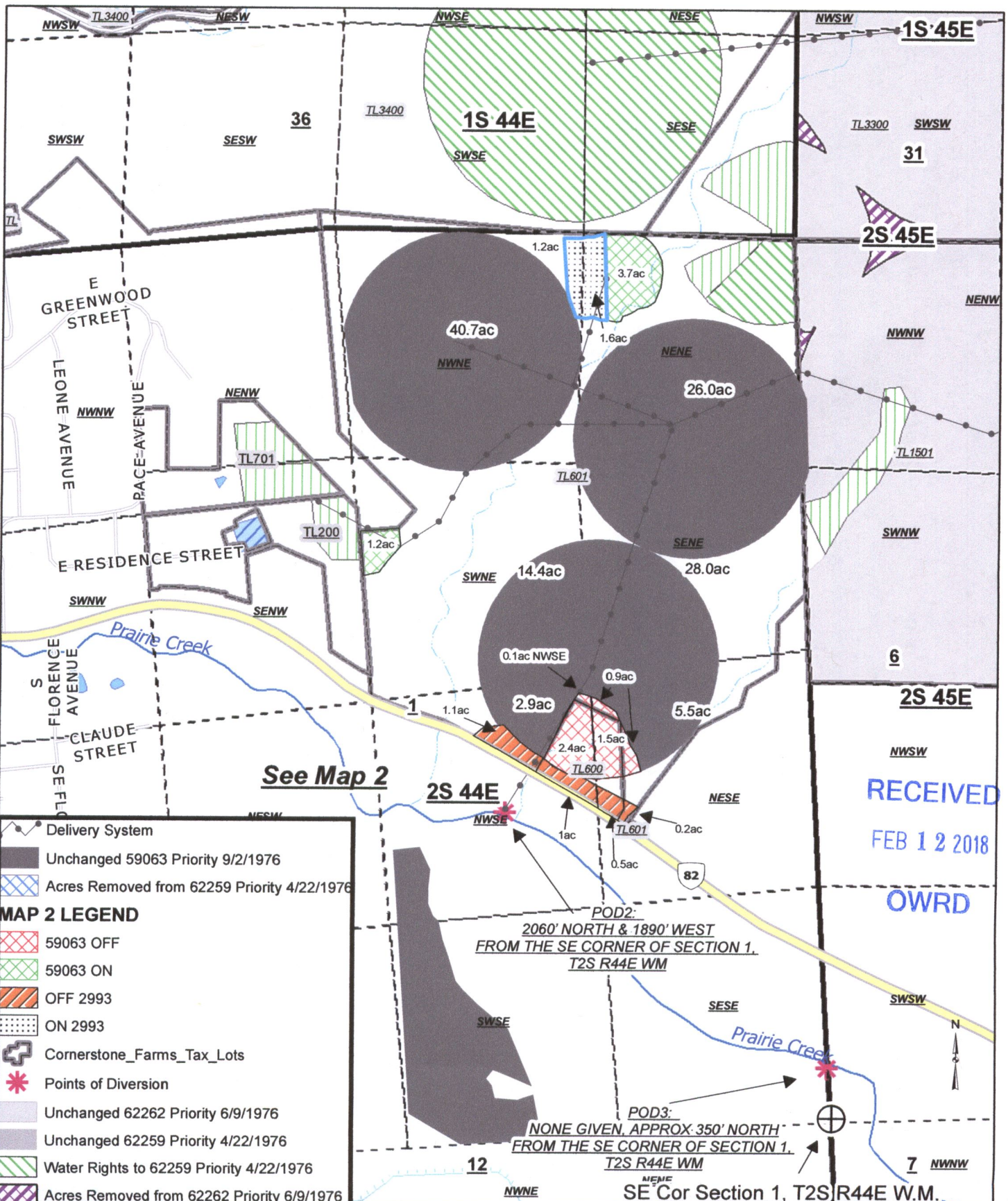
1:15840

FEB 12 2018

RECEIVED
OWRPD

Map Disclaimer: For informational purposes and only, no liability has been assumed for or by the author for legal, engineering, or surveying purposes. Users of this information should review or consult the original documents and/or information sources to ascertain the validity of the information presented. This map is not intended to display property lines.

Disclaimer: This filing is the result of a manual search of the records of the Watermaster's Plat Cards and the Watermaster's Plat Cards. The filing has not been field checked. This filing is a summary of the information that has been abstracted under the conditions of CWS 540.010. The plat card records of land by the 403 acre quarter-section system are not guaranteed. The water rights for each lot are only a summary of the records of the water rights on each lot. No liability is assumed for any errors or omissions.



Map Disclaimer:
 This product is for informational purposes and may not have been prepared for, or be suitable for legal, engineering, or surveying purposes. Users of this information should review or consult the primary data and information sources to ascertain the usability of the information.
 This map is not intended to display property lines

Disclaimer: This listing is the result of a manual search of the records of the Watermaster's Plat Cards and the WRRIS database. The listing has not been field checked. That a right is of record is no guarantee that it has not been abandoned under the conditions of CRS 540.810. The plat card records of listed by the 40.0 acre quarter-quarter within a section. If the water right listed within a quarter-quarter is on more than one tax lot, this office has not itemized that water rights for each tax lot - only a survey could accurately depict how much of the water rights are on each tax lot.

1:10,000