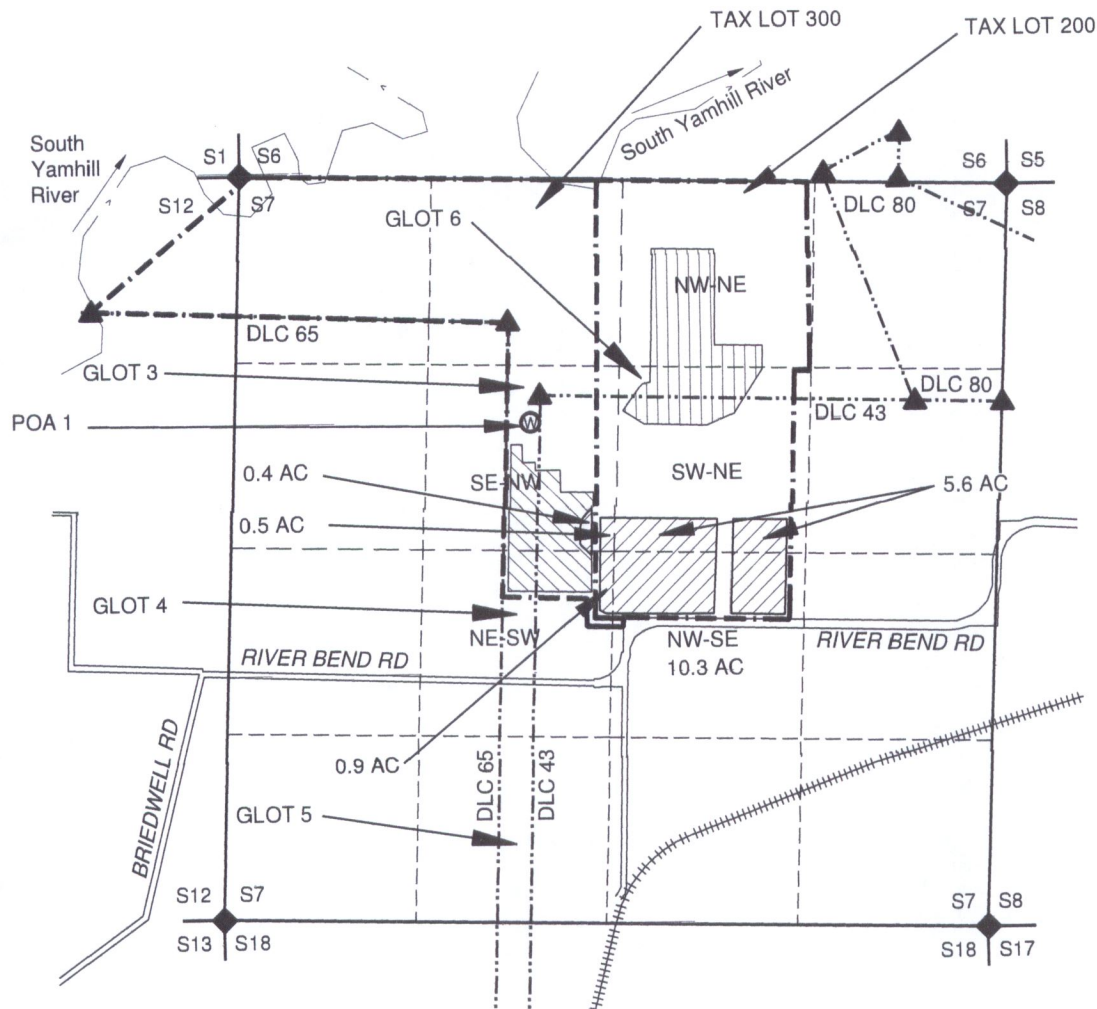


A3-1

# MAP FOR Permit Amendment S7, T5S, R4W, YAMHILL COUNTY Appl G-15846, Permit G-17491



1 IN = 1320 FT  
0 660 1320



POA 1 IS 1500'  
SOUTH AND 1925'  
EAST OF NW  
SECTION 7 (PER  
G-17491)

RECEIVED  
FEB 16 2018  
OWRD

- NOTES:
- THIS MAP IS NOT INTENDED TO PROVIDE LEGAL DIMENSIONS OR LOCATIONS OF PROPERTY OWNERSHIP LINES.
  - PROPERTY, QUARTER-QUARTER, AND DONATION LAND CLAIM LINES ARE BASED ON THE TAX ASSESSOR MAP FOR SECTION 7, T5S, R4W.
  - IRRIGATION AREAS ARE BASED ON 2017 AERIAL PHOTOGRAPHS FROM GOOGLE EARTH WEBSITE.
  - THE ACRES OF THE IRRIGATED AREAS THAT ARE "FROM" AND HAVE "NO CHANGE" ARE NOT LISTED AS THEY ARE IDENTICAL TO PERMIT G-17491.
  - WATER CONVEYANCE LINES SHALL BE ALL WITHIN THE PROPERTY AND THEREFORE ARE NOT SHOWN.

**LEGEND**

- DONATION LAND CLAIM (DLC) CORNER
- SECTION CORNER
- POINT OF APPROPRIATION
- STREAM OR SURFACE DRAINAGE
- TAX LOT LINE
- SECTION LINE
- QUARTER-QUARTER LINE
- DLC LINES
- ROADS
- RAILROADS
- IRRIGATION NO CHANGE
- IRRIGATION "FROM" LAND
- IRRIGATION "TO" LAND



MAP BY:  
**ASPEN RURAL LAND  
CONSULTING**  
ERIC URSTADT, PE, PLS  
Jan 2018  
Hengden3D