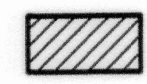
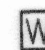




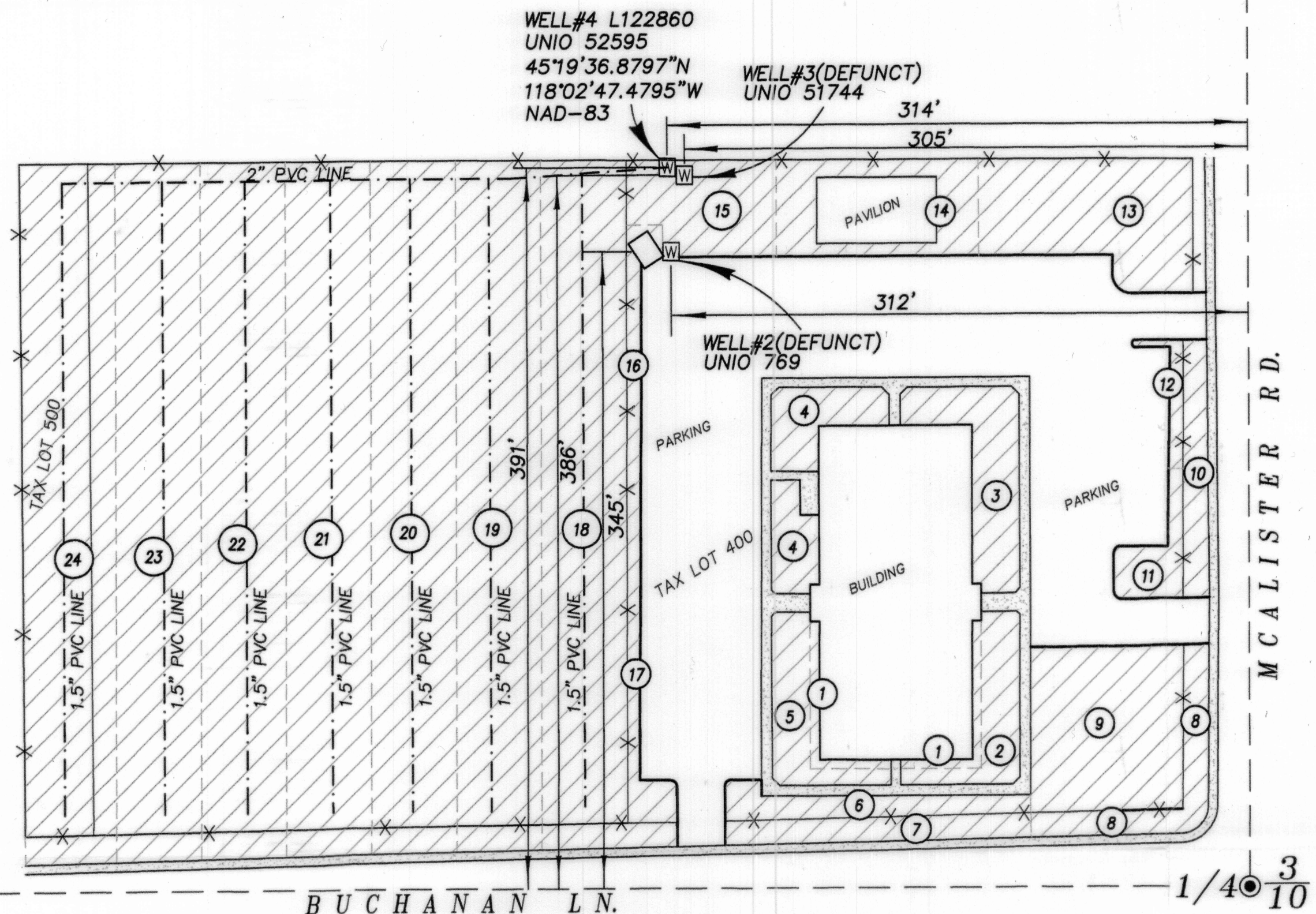
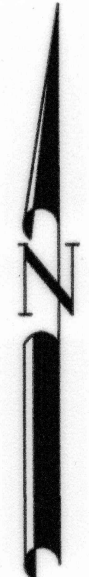
AUGUST 1, 2017
**CLAIM OF BENEFICIAL USE
 FOR TRANSFER OF
 WELL WATER RIGHT FROM WELL # 1 OF CERTIFICATE NUMBER 35175**
 FOR
 THE CORPORATION OF THE PRESIDING BISHOP OF THE
 CHURCH OF JESUS CHRIST OF LATTER-DAY SAINTS

Sited in the Southeast quarter of the Southwest quarter of Section 3, Township 3 South,
 Range 38 East of the Willamette Meridian, City of Island City, Union County, Oregon
 TAX LOTS 400 and 500, MAP 03S38E03CD

SCALE: 1" = 60'

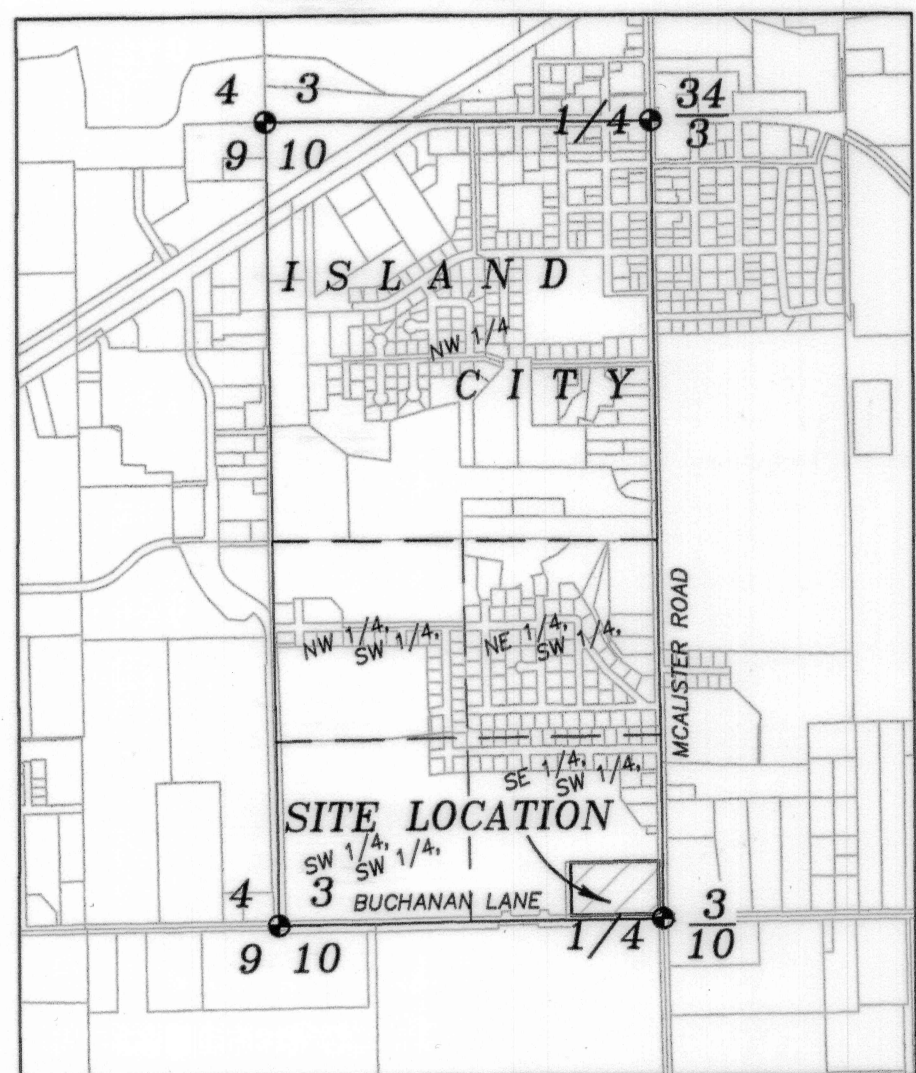
LEGEND

-  Lands irrigated by Well #4 (3.8 acres)
-  Well
-  Sprinkler Zone
-  Water Line



VICINITY MAP

SCALE 1" = 1320'



SPRINKLER ZONE

ZONE 1 - 1,190 SQ. FT.	ZONE 1 - 23 sprinklers
ZONE 2 - 2,300 SQ. FT.	ZONE 2 - 11 sprinklers
ZONE 3 - 3,630 SQ. FT.	ZONE 3 - 19 sprinklers
ZONE 4 - 3,305 SQ. FT.	ZONE 4 - 23 sprinklers
ZONE 5 - 2,305 SQ. FT.	ZONE 5 - 11 sprinklers
ZONE 6 - 2,100 SQ. FT.	ZONE 6 - 27 sprinklers
ZONE 7 - 2,215 SQ. FT.	ZONE 7 - 11 sprinklers
ZONE 8 - 2,460 SQ. FT.	ZONE 8 - 12 sprinklers
ZONE 9 - 7,375 SQ. FT.	ZONE 9 - 12 sprinklers
ZONE 10 - 1,880 SQ. FT.	ZONE 10 - 8 sprinklers
ZONE 11 - 1,400 SQ. FT.	ZONE 11 - 17 sprinklers
ZONE 12 - 530 SQ. FT.	ZONE 12 - 14 sprinklers
ZONE 13 - 6,930 SQ. FT.	ZONE 13 - 10 sprinklers
ZONE 14 - 3,400 SQ. FT.	ZONE 14 - 14 sprinklers
ZONE 15 - 3,910 SQ. FT.	ZONE 15 - 12 sprinklers
ZONE 16 - 1,340 SQ. FT.	ZONE 16 - 16 sprinklers
ZONE 17 - 1,870 SQ. FT.	ZONE 17 - 23 sprinklers
ZONE 18 - 17,140 SQ. FT.	ZONE 18 - 18 sprinklers
ZONE 19 - 17,200 SQ. FT.	ZONE 19 - 7 sprinklers
ZONE 20 - 17,200 SQ. FT.	ZONE 20 - 7 sprinklers
ZONE 21 - 17,200 SQ. FT.	ZONE 21 - 8 sprinklers
ZONE 22 - 17,200 SQ. FT.	ZONE 22 - 8 sprinklers
ZONE 23 - 17,200 SQ. FT.	ZONE 23 - 8 sprinklers
ZONE 24 - 17,200 SQ. FT.	ZONE 24 - 8 sprinklers

TOTAL - 167,480 SQ. FT (3.8 ACRES) Sprinklers of varying make and model

NOTE: Transmission of water from Well #4 to Zones 1 - 17 was evidenced by field inspection. Underground location of piping was unknown to the landowners and maintenance personnel. No map or as-built of the system could be find. Size of piping varying from 1 1/4" to 2" PVC.



NOTE: The preparation of this map was for the purpose of identifying the location of water rights and has no intention of providing dimensions or location of property ownership lines. Location information shown hereon was furnished by the applicant.

APPLICATION NO. T-11761

COBU MAP # 2004

RECEIVED
 OCT 03 2017
 OWRD