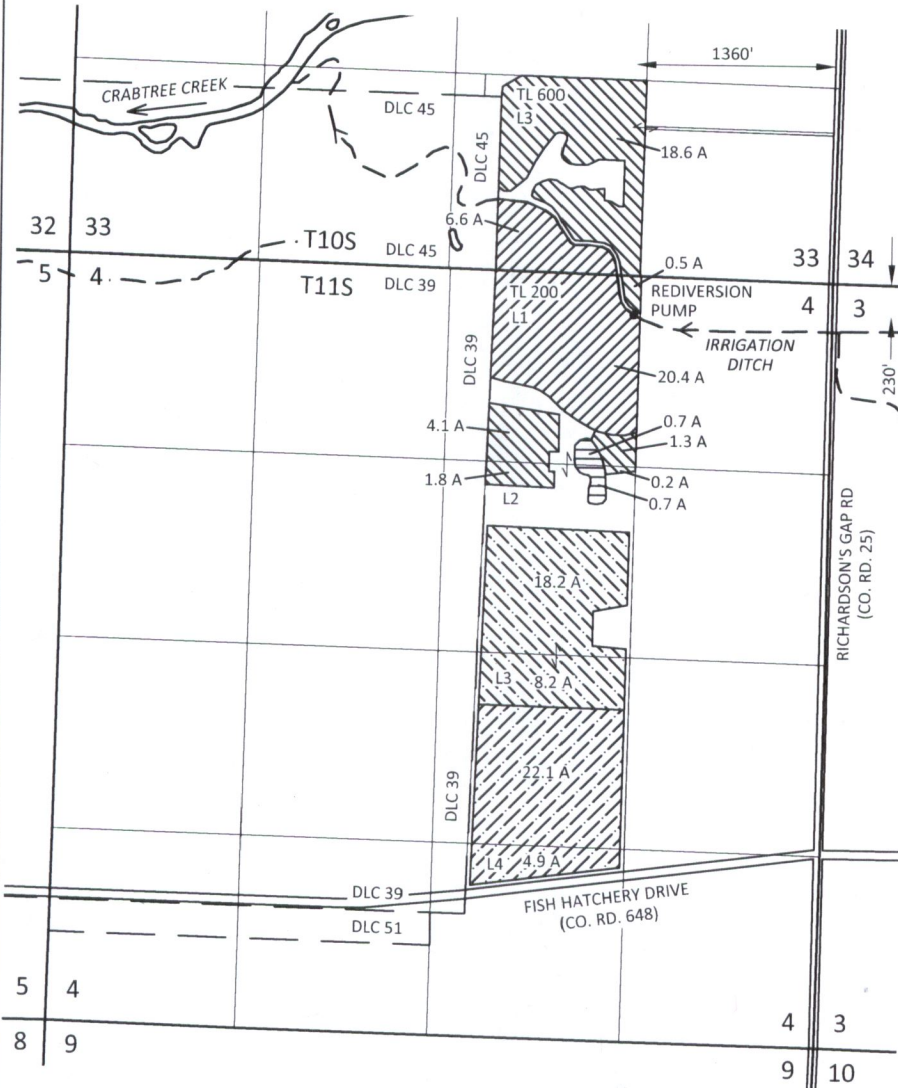




Section 33, T10S, R1W, W.M.,
Section 4, T11S, R1W, W.M.,
Linn County, Oregon

TEMPORARY TRANSFER APPLICATION MAP
Jack Scott Farms Inc.





EXPLANATION

FROM LANDS

-  CERTIFICATE 43483 / PRIORITY: 4/12/1967 IRRIGATION 27.0 ACRES
-  CERTIFICATE 55945 / PRIORITY: 5/16/1977 IRRIGATION 26.4 ACRES

TO LANDS

-  CERTIFICATE 43483 / PRIORITY: 4/12/1967 IRRIGATION 27.0 ACRES
-  CERTIFICATE 55945 / PRIORITY: 5/16/1977 IRRIGATION 26.4 ACRES

REMAINING LANDS

-  CERTIFICATE 43483 / PRIORITY: 4/12/1967 IRRIGATION 1.4 ACRES

• POINT OF DIVERSION (POD) / REDIVERSION PUMP

RECEIVED

APR 17 2018

OWRD

N

SCALE



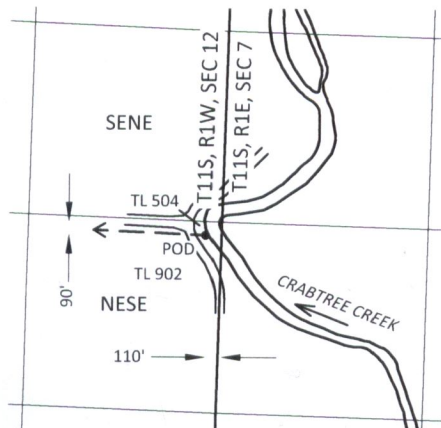
1 INCH = 1320 FEET

April 9, 2018

This map is not intended to provide legal dimensions or locations of property ownership lines

Figure 1

INSET MAP



SKOOKUM
WATER ASSOCIATES INC

1626 VICTORIAN WAY
EUGENE, OR 97401
(503) 319-8926