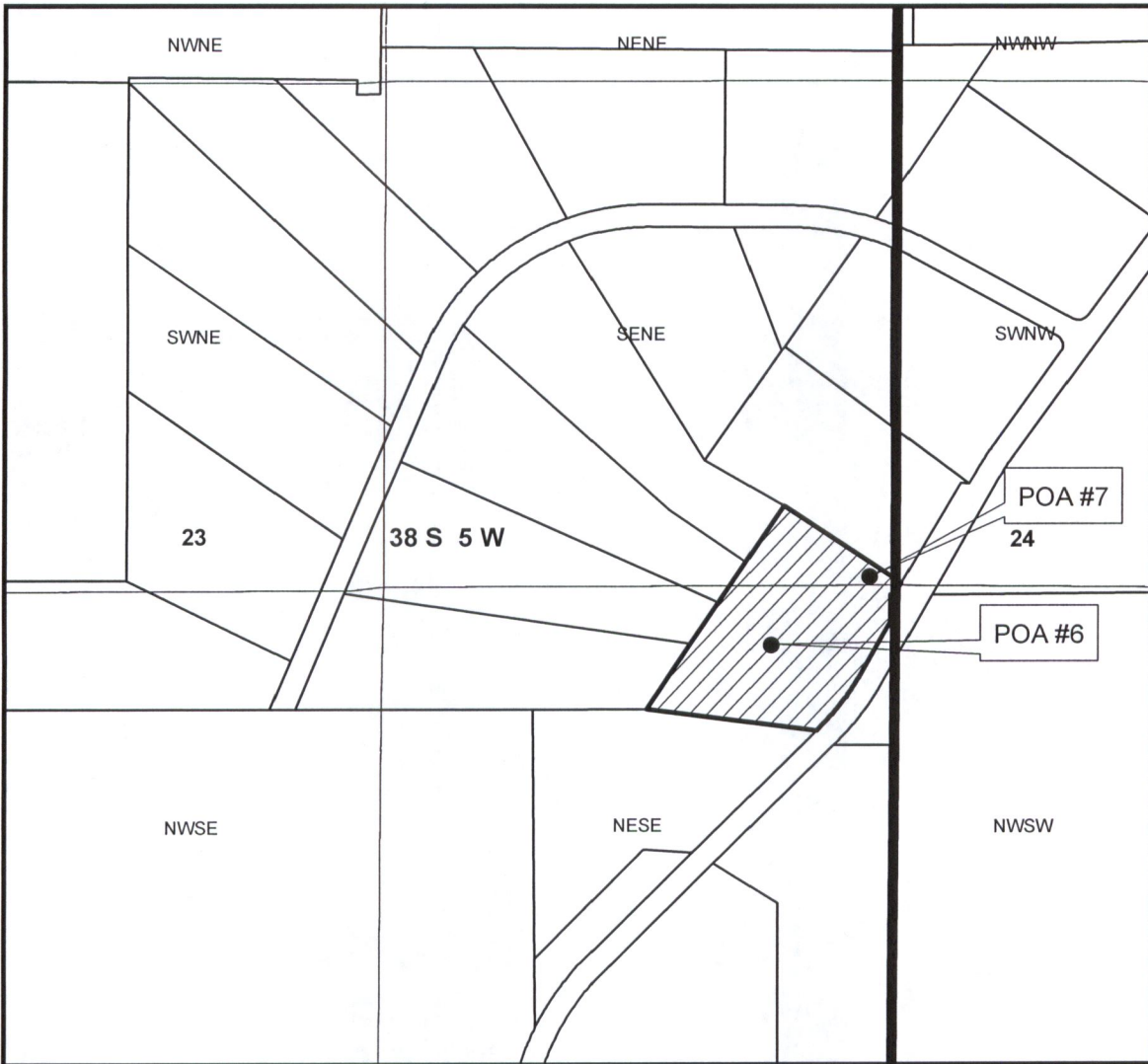






# 38 05 23 TL 116 - 17610 Williams Hwy



1 inch = 500 feet

**Proposed Additional POA's for GR 200**

-  17610 Williams Hwy - POU IR
-  Tax Lot
-  Sections
-  Quarter quarters

Proposed POA Locations:  
 POA #6 165' S, 330' W of NE Corner of NESE Sec 23  
 POA #7 55' W, 20' N of NE Corner of NESE Sec 23

POU by QQ:  
 1.1 AC in SENE  
 3.9 AC in NESE

RECEIVED  
 MAY 02 2018  
 OWRD