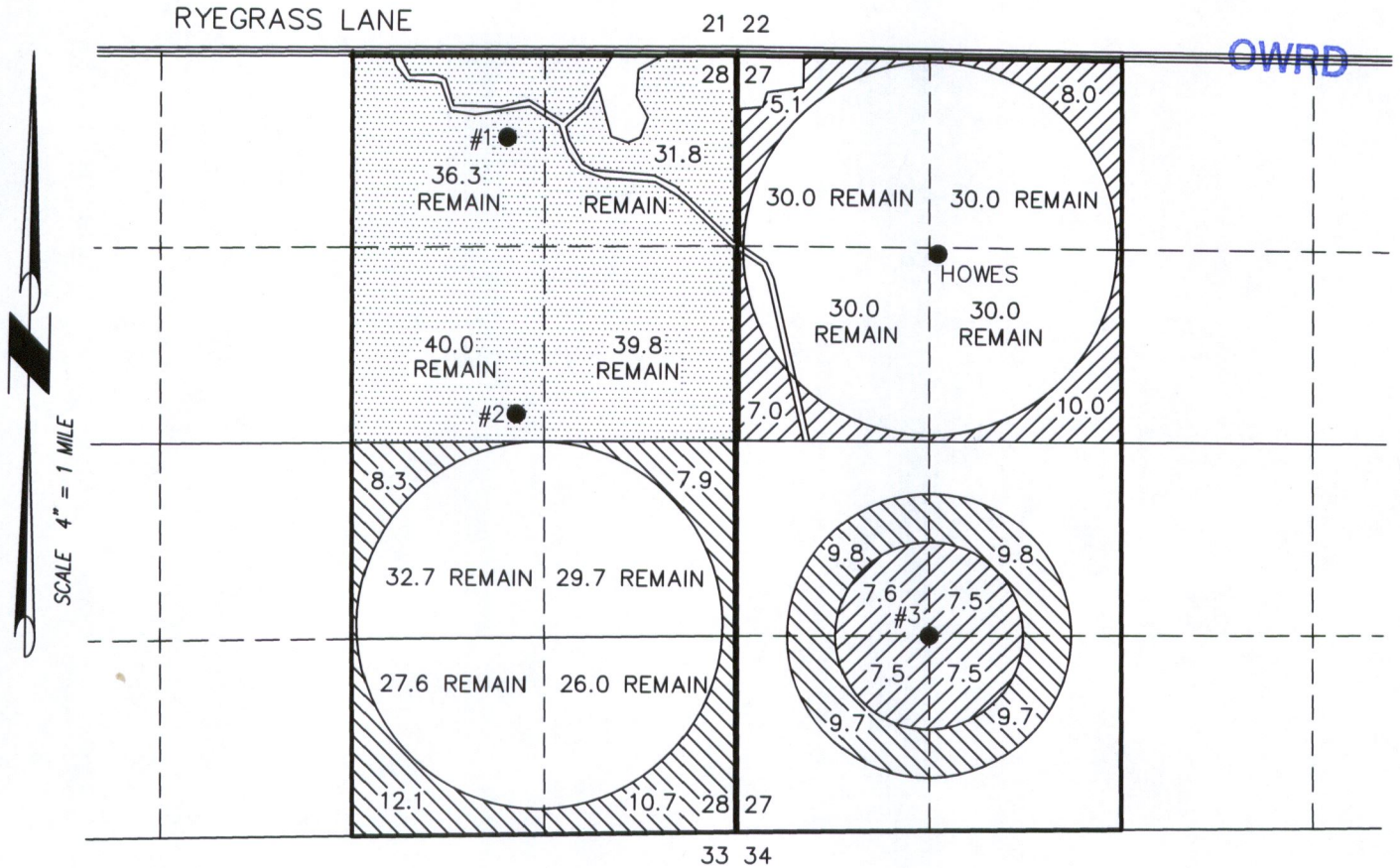


MAP TO ACCOMPANY APPLICATION TO CHANGE PLACE OF USE & POINTS OF APPROPRIATION FOR DUNBAR SILVIES RIVER RANCH, LLC

TAX LOTS 4600 & 4700
IN SECTIONS 27 & 28, TOWNSHIP 23 SOUTH, RANGE 32 EAST, W.M.
HARNEY COUNTY, OREGON


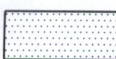

RECEIVED
MAY 25 2018

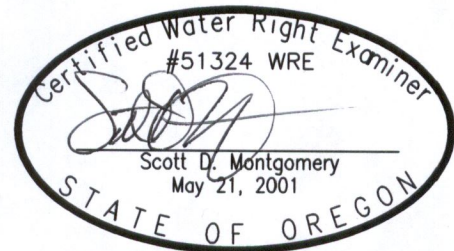


● WELL #1 (HARN 599/51470/51521) IN THE NW 1/4 OF THE NE 1/4 SECTION 28 & 9-1/2 CHAINS SOUTH & 24-1/2 CHAINS WEST FROM THE NE CORNER SECTION 28.

● WELL #2 (HARN 602) IN THE SW 1/4 OF THE NE 1/4 SECTION 28 & 2890' NORTH & 1520' WEST FROM THE SE CORNER SECTION 28.

● HOWES WELL (HARN 592) IN THE SE 1/4 OF THE NW 1/4 SECTION 27 & 20.5 CHAINS SOUTH & 21 CHAINS EAST FROM THE NW CORNER SECTION 27.

-  30.1 ACRES 'IS' FROM HOWES WELL CERTIFICATE 28656 (PERMIT G-47) TRANSFERRED. 123.9 ACRES REMAIN, AS SHOWN
-  147.9 ACRES 'IS' FROM WELL 1 CERTIFICATE 28846 (PERMIT G-1273), REMAIN AS SHOWN
-  39.0 ACRES 'IS' FROM WELL 2 CERTIFICATE 33151 (PERMIT G-1484) TRANSFERRED. 115.0 ACRES REMAIN, AS SHOWN



RENEWAL DATE: 12/31/2018

THIS MAP IS FOR THE PURPOSE OF LOCATING A WATER RIGHT ONLY AND HAS NO INTENT TO PROVIDE LEGAL DIMENSIONS OR THE LOCATION OF PROPERTY LINES.

PROJECT No. 18-003

PREPARED AT THE REQUEST OF:
DUNBAR SILVIES RIVER RANCH
9622 VICTOR ROAD
ANCHORAGE, AK 99515

ALL POINTS ENGINEERING & SURVEYING, INC.



P.O. BOX 767
TERREBONNE, OREGON 97760
(541) 548-5833 PH
scott@apeands.com
www.APEandS.com