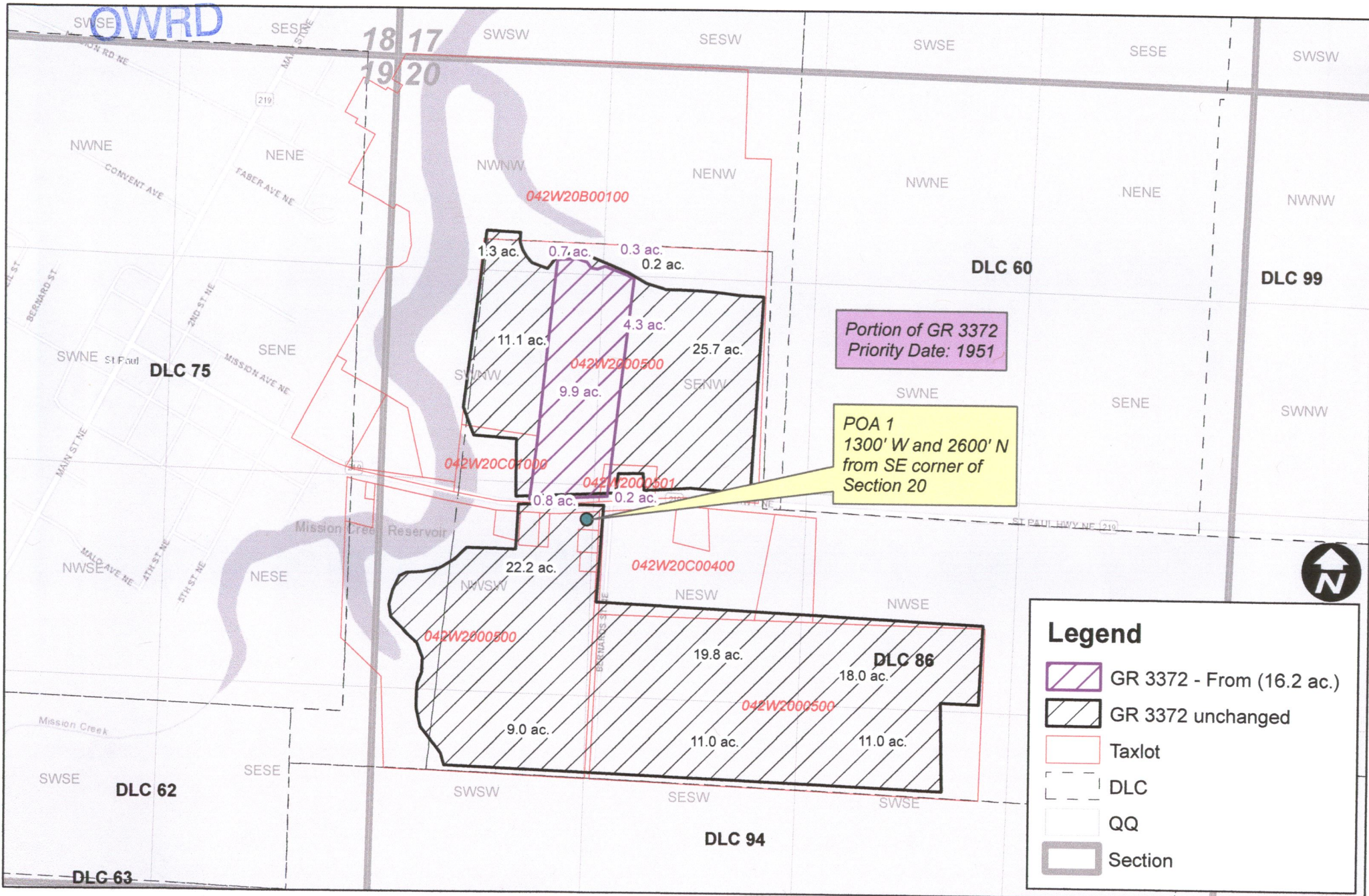


RECEIVED

MAY 30 2018

Groundwater Registration Modification - Kirk - From map



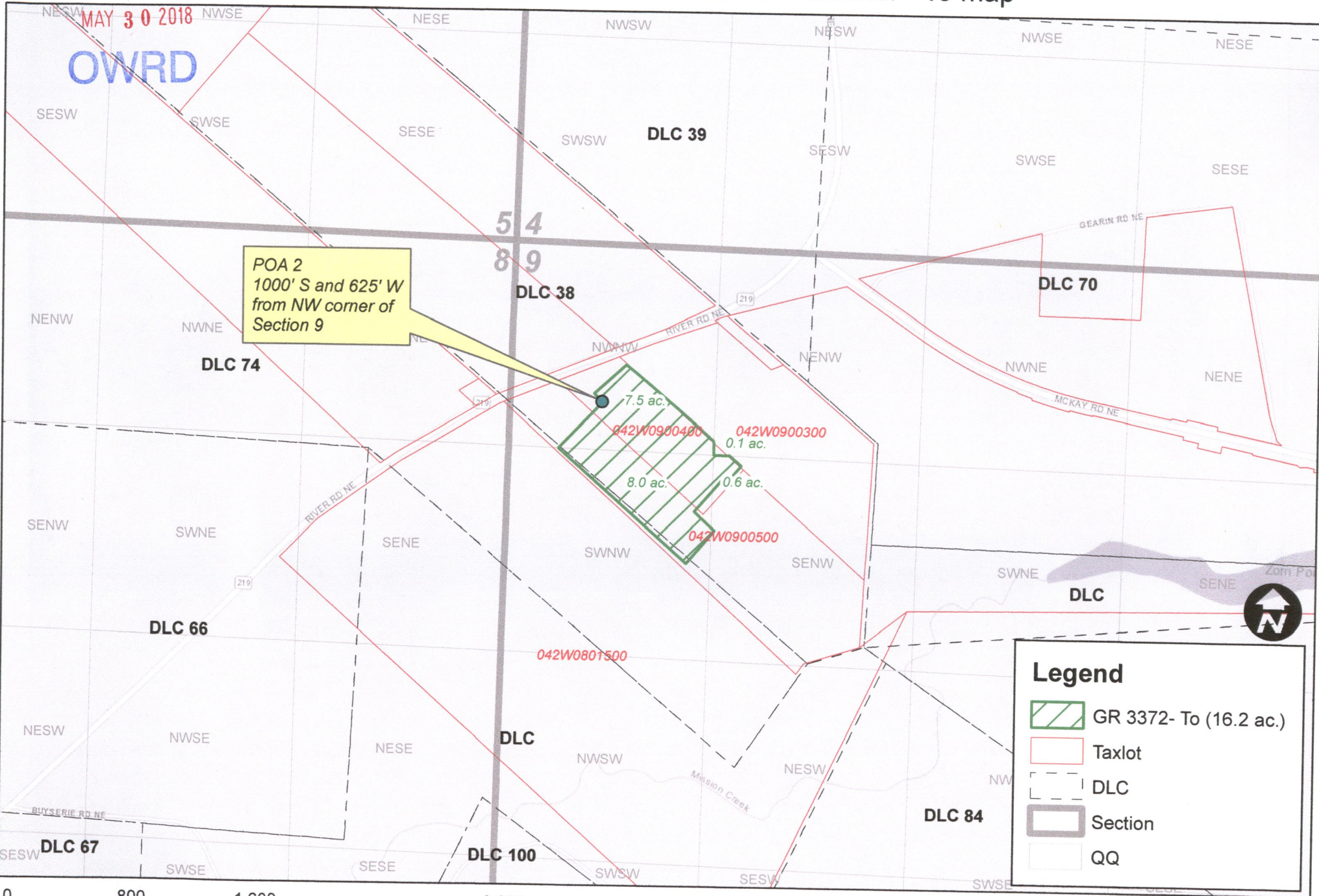
0 800 1,600 3,200 Feet

RECEIVED

Groundwater Registration Modification - Mosher - To map





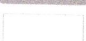
MAY 30 2018

OWRD



POA 2
 1000' S and 625' W
 from NW corner of
 Section 9

Legend

-  GR 3372- To (16.2 ac.)
-  Taxlot
-  DLC
-  Section
-  QQ

