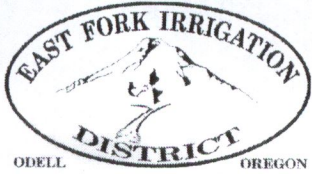


# **“OFF” MAP**

RECEIVED

JUN 08 2018

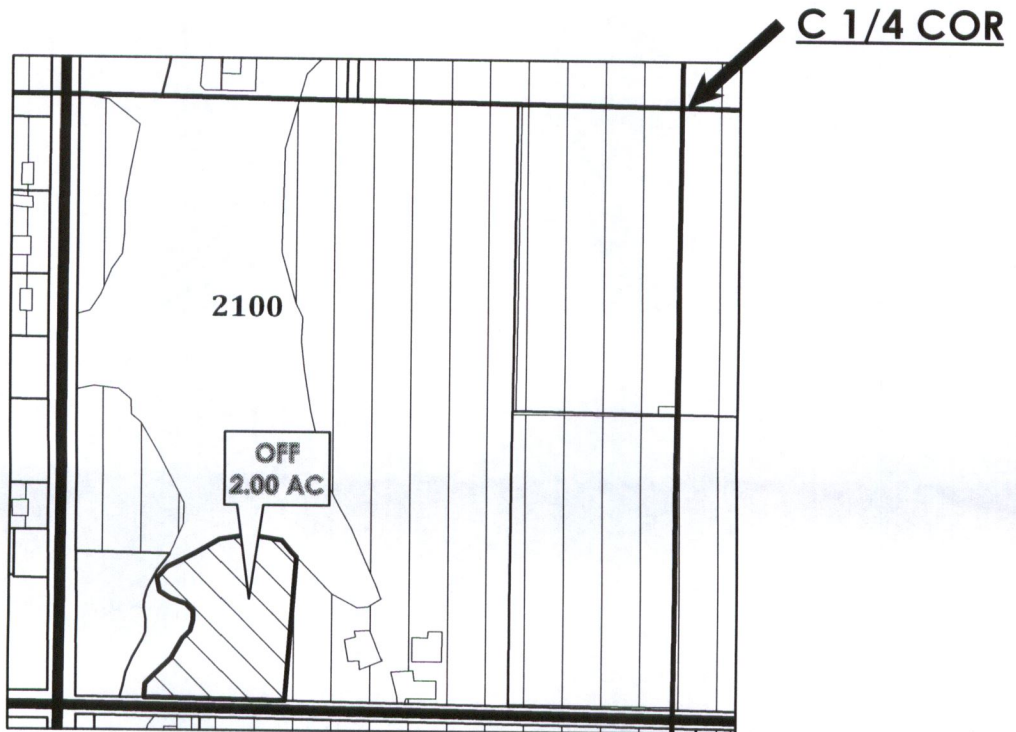
OWRD



**HOOD RIVER COUNTY  
SEC. 23 T02N R10E  
SCALE - 1" = 400'**



**SW 1/4 OF THE SW 1/4**



**RECEIVED**

**JUN 08 2018  
OWRD**

**"OFF" MAP**

**Cert 92000 23.40 Ac  
Cert 80929 2.50 Ac**

	EXISTING WATER RIGHTS
	OFF LANDS

**APPLICATION FOR PERMANENT WATER RIGHTS TRANSFER  
FROM: UDELIUS ORCHARDS, INC / TO: UDELIUS GREEN  
TAXLOT #: 2100 2.00 ACRES**

# **“ON” MAP**

RECEIVED

JUN 08 2018

OWRD



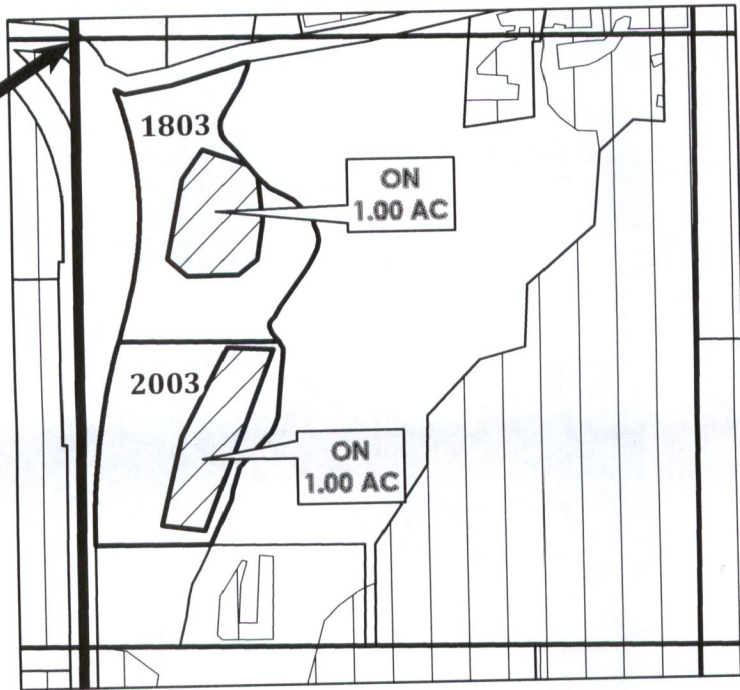
**HOOD RIVER COUNTY  
SEC. 23 T02N R10E  
SCALE - 1" = 400'**

N



**NW 1/4 OF THE SW 1/4**

W 1/4 COR



RECEIVED  
JUN 08 2018  
OWRD

Cert 92000 16.20 Ac  
Cert 80929 0.70 Ac

RECEIVED  
JUN 08 2018  
OWRD

	EXISTING WATER RIGHTS
	ON LANDS

"ON" MAP

**APPLICATION FOR PERMANENT WATER RIGHTS TRANSFER  
FROM: UDELIUS ORCHARDS, INC / TO: UDELIUS GREEN  
TAXLOT #: 1803 1.00 ACRES  
TAXLOT #: 2003 1.00 ACRES**