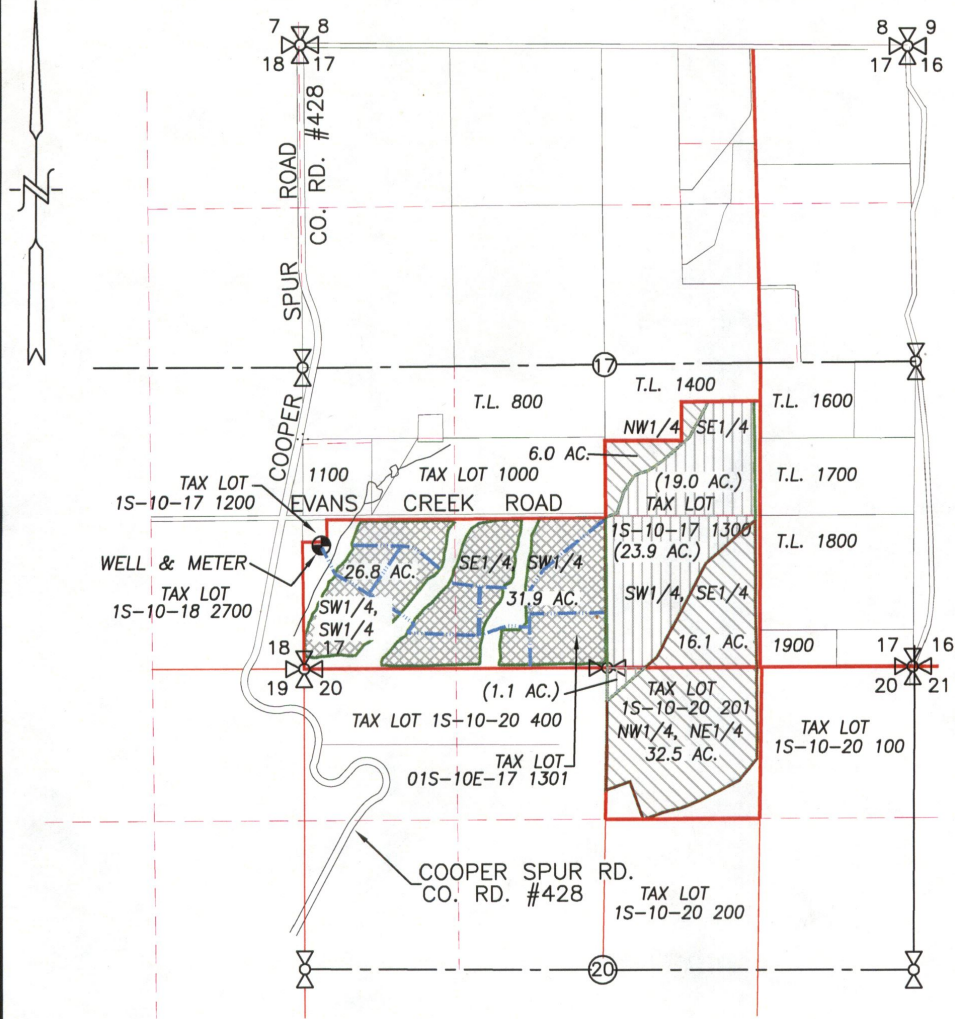
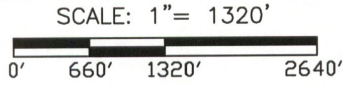


SECTIONS 17 & 20, TWP.1 S. RANGE 10 E. W.M.
HOOD RIVER COUNTY, OREGON



- WELL (HOOD 50199): 1,075' N. & 163' E. OF SW CORNER SECTION 17
- PROPOSED TRANSFER FROM AREA = 58.7 ACRES GROSS x 67% = 39.3 AC. (6' WIDE IRRIGATED STRIP WITH 12' TO BE TAKEN OUT OF IRRIGATION)
- TRANSFER TO AREA= 54.6 ACRES (APPLES) GROSS AREA x 41.7% = 22.8 AC. (5' WIDE IRRIGATED STRIP WITH 7' NON-IRRIGATED STRIP)
- TRANSFER TO AREA= (44.0) ACRES (CHERRIES) GROSS AREA x 37.5%= 16.5 AC. (6' WIDE IRRIGATED STRIP WITH 10' NON-IRRIGATED STRIP)
- IRRIGATION MAIN

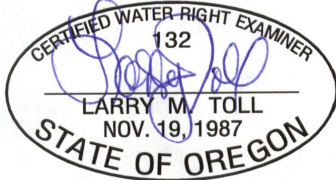
TEMPORARY TRANSFER MAP



TRANSFER No. _____

IN THE NAME OF:
HOOD RIVER CHERRY CO.

DATE: JUNE 7, 2018



EXPIRES: 06/30/2020

BY: **TENNESON ENGINEERING CORP.**
3775 CRATES WAY
THE DALLES, OREGON. 97058
PH. 541-296-9177
FAX 541-296-6657

NOTE:
"THIS MAP IS NOT INTENDED TO PROVIDE LEGAL DIMENSIONS OR LOCATIONS OF PROPERTY OWNERSHIP LINES."

W.O. #13609wr(Temp)

RECEIVED
JUN 13 2018
OWRD