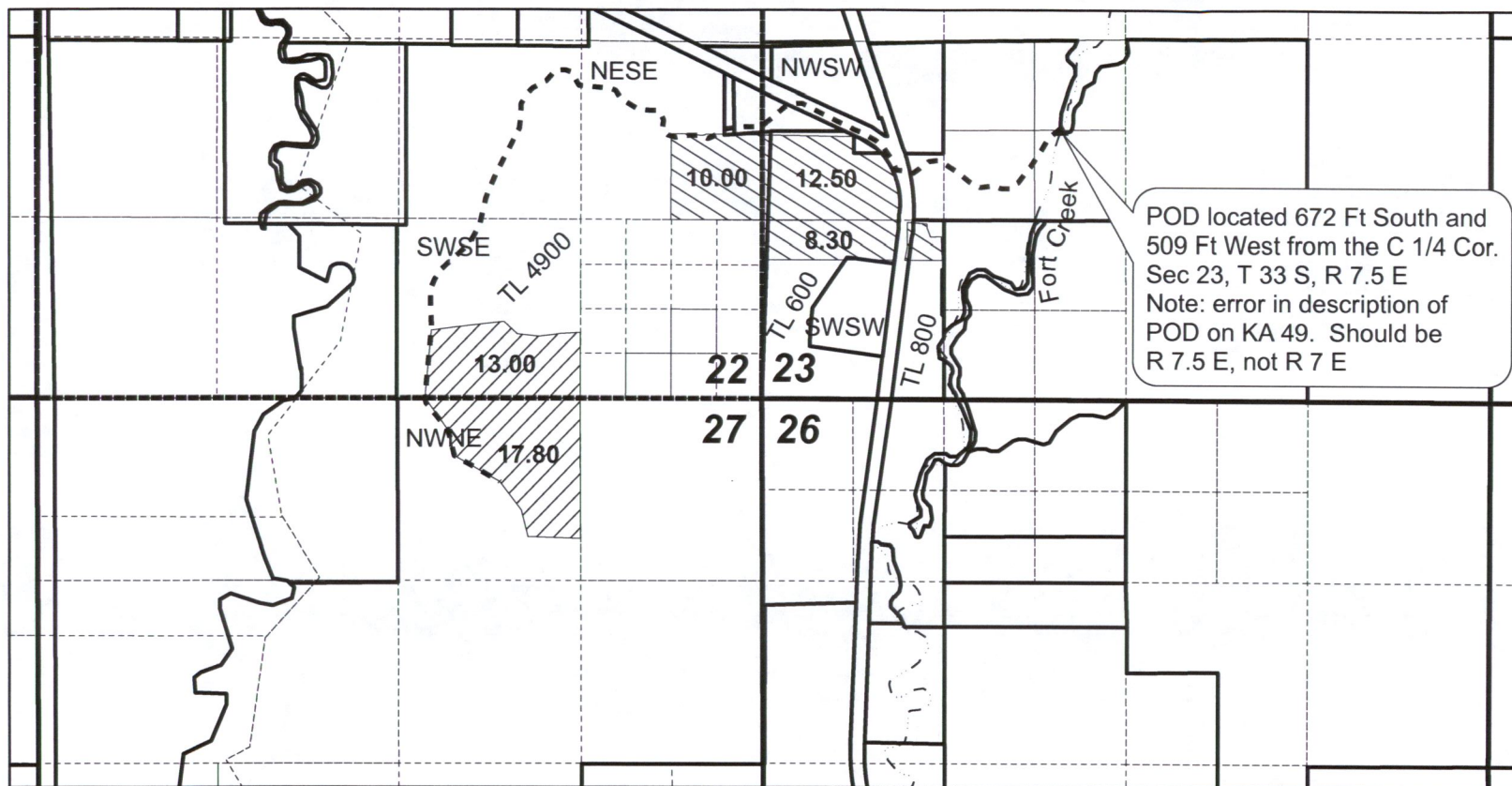





**Map of
Split Season Drought Transfer
Stephen & Jamie Traynham
KA 49**

**T 33 S, R 7.5 E
Section 22, 23 & 27**



Legend

-  Transfer TO 30.8 Ac
-  KA 49 FROM 30.8 acres
-  Ditch



1 inch = 1,320 feet

RECEIVED
 JUN 14 2018
OWRD