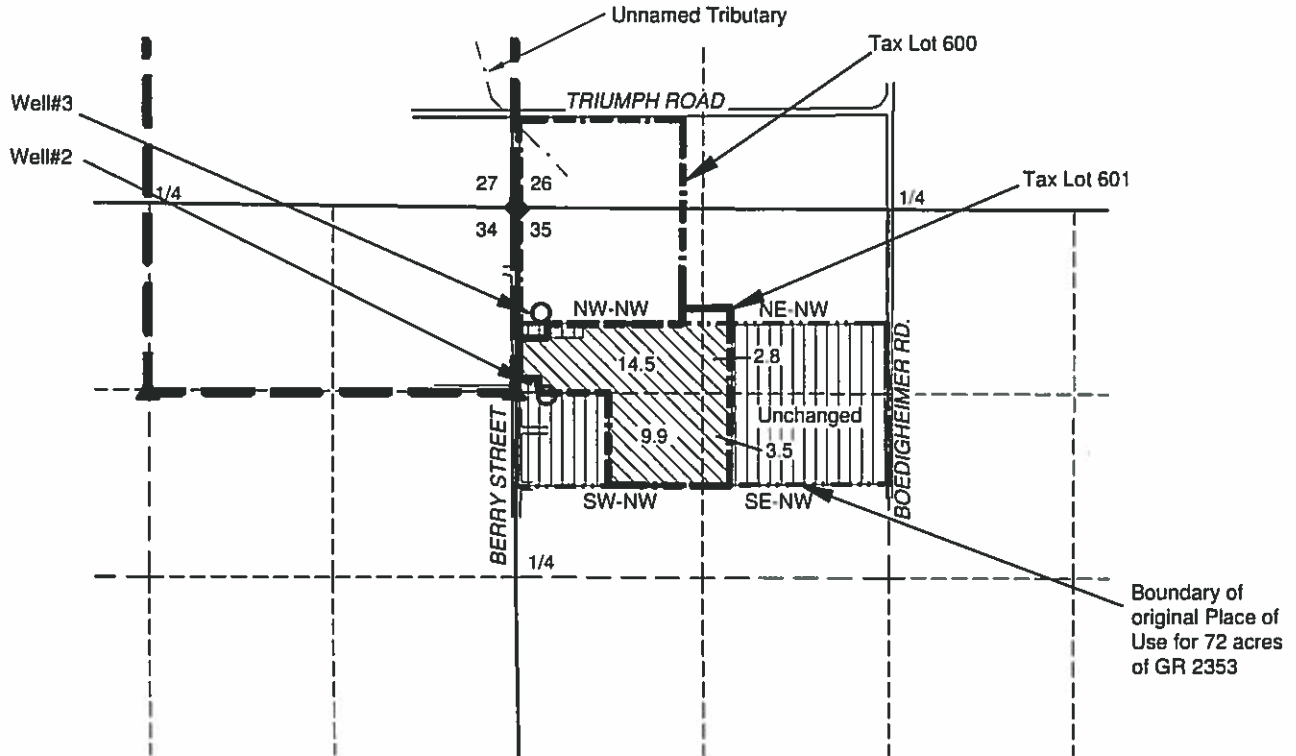


Map for Water Right Transfer - FROM Lands

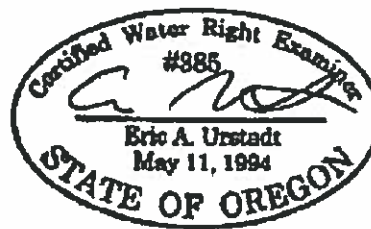
Sections 35, T8S, R1W, Marion County
GR 2353, Cert. GR 2235



LEGEND

- DONATION LAND CLAIM (DLC) CORNER
- STREAM OR SURFACE DRAINAGE
- SECTION CORNER
- POINT OF APPROPRIATION (POA) (WELL)
- TAX LOT LINE (NONE SHOWN)
- SECTION LINE
- QUARTER-QUARTER LINE
- DLC LINE
- GR2353 ORIGINAL PLACE OF USE

- GR2353 CHANGING, 30.7 AC
- GR2353 REMAINING UNCHANGED



RECEIVED

JUL 02 2018

OWRD



1 IN = 1320 FT
0 660 1320

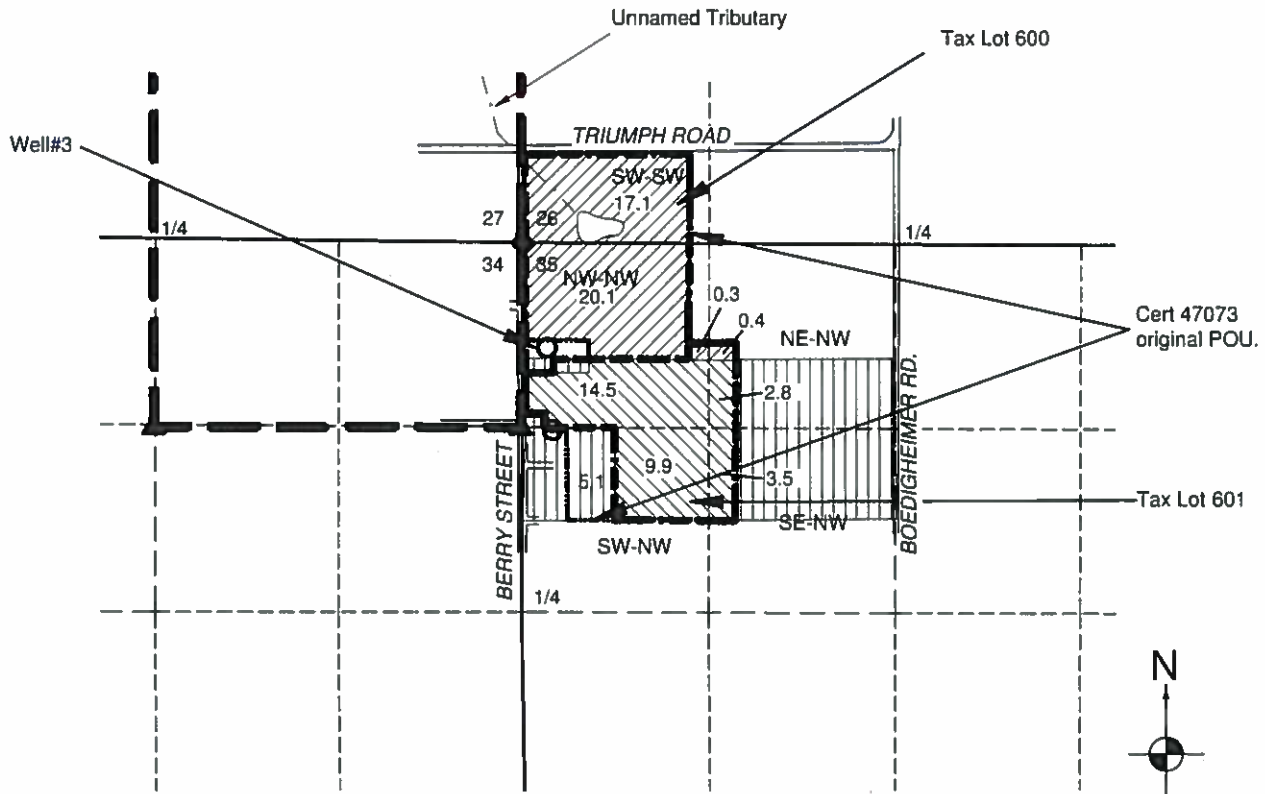
NOTES:

- THIS MAP IS NOT INTENDED TO PROVIDE LEGAL DIMENSIONS OR LOCATIONS OF PROPERTY OWNERSHIP LINES.
- THE TAX LOT BOUNDARIES ARE FROM THE SCALED TAX ASSESSOR MAP, THE IRRIGATION BOUNDARIES ARE FROM THE MAP FOR GR2353.
- THE WATER CONVEYANCE PIPELINES ARE ALL ON THE PROPERTIES AND THEREFORE ARE NOT SHOWN.

MAP BY:
**ASPEN RURAL LAND
CONSULTING**
ERIC URSTADT, PE, PLS
971-250-1520
JUL 2018
Schumacher6F

Map for Water Right Transfer - FROM Lands

Sections 26 & 35, T8S, R1W, Marion County Certificate 47073



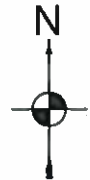
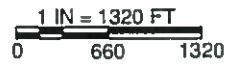
LEGEND

- DONATION LAND CLAIM (DLC) CORNER
- STREAM OR SURFACE DRAINAGE
- SECTION CORNER
- POINT OF APPROPRIATION (POA) (WELL)
- TAX LOT LINE
- SECTION LINE
- QUARTER-QUARTER LINE
- DLC LINE
- PRIMARY ACRES, 37.9 total
- SUPPLEMENTAL ACRES, 30.7 total
- AREA OF 47073 REMAINING

RECEIVED

JUL 02 2018

OWRD



NOTES:
 -THIS MAP IS NOT INTENDED TO PROVIDE LEGAL DIMENSIONS OR LOCATIONS OF PROPERTY OWNERSHIP LINES.
 -THE TAX LOT BOUNDARIES ARE FROM THE SCALED TAX ASSESSOR MAP, THE IRRIGATION BOUNDARIES ARE FROM THE MAP FOR CERT. 47073.
 -THE WATER CONVEYANCE PIPELINES ARE ALL ON THE PROPERTIES AND THEREFORE ARE NOT SHOWN.

MAP BY:
ASPEN RURAL LAND CONSULTING
 ERIC URSTADT, PE, PLS
 971-250-1520
 JUL 2018
 Schumacher6F