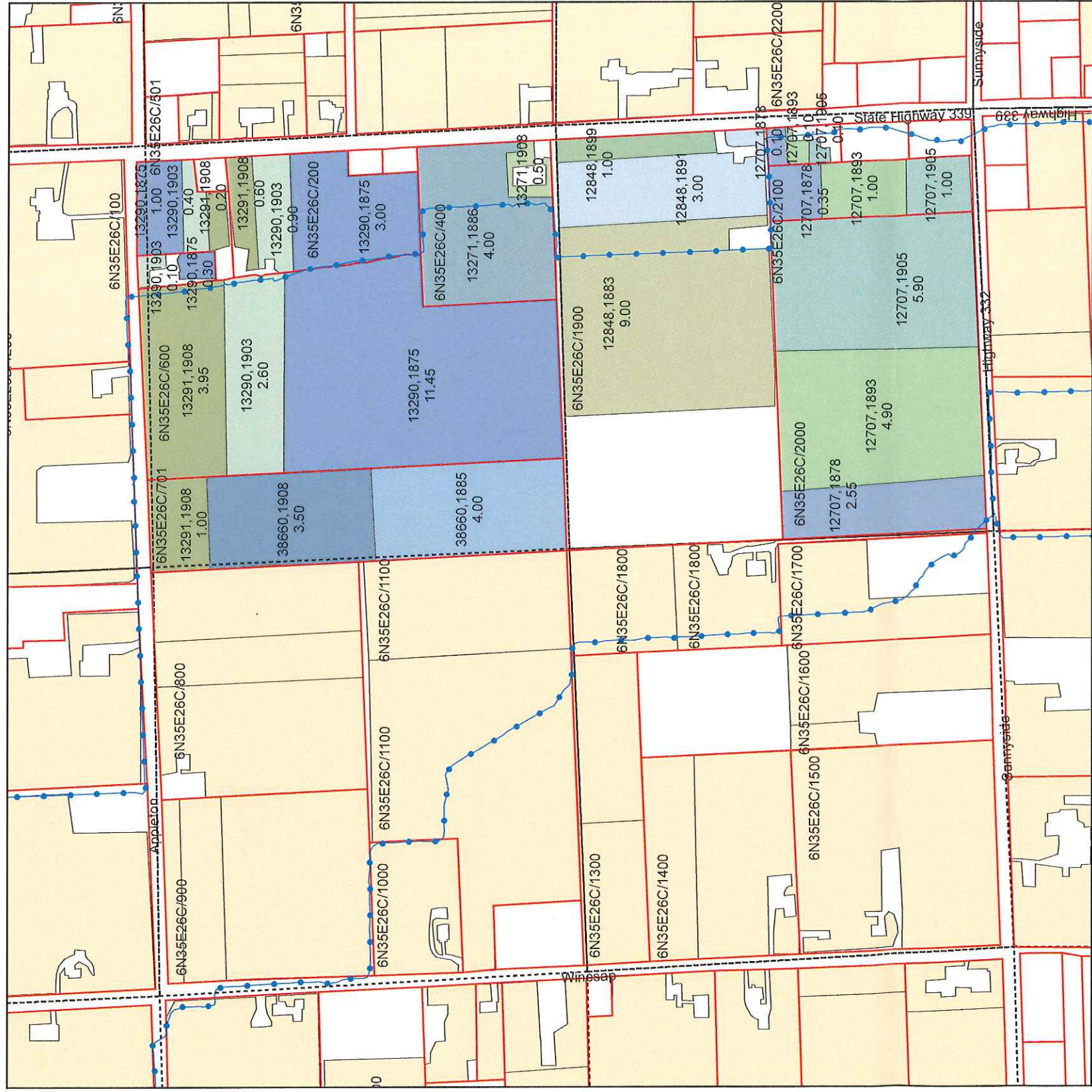


Walla Walla River Irrigation District

3201 Water Rights Map



T6N R35E WM Section 26 E1/2 SW Quarter

Primary Certificates

CERTIFICATION,PRIORITY

- 12707, 1878
- 12707, 1893
- 12707, 1905
- 12848, 1883
- 12848, 1891
- 12848, 1899
- 13271, 1886
- 13271, 1908
- 13290, 1875
- 13290, 1903
- 13291, 1908
- 38660, 1885
- 38660, 1908
- Water Rights Not Within Quarter

ASSESSOR/MAP	CERTIFICATE	PRIORITY	QQ	WR ACRES
6N35E26C/100	13290	1875	NESW	0.30
6N35E26C/100	13290	1903	NESW	0.10
6N35E26C/1900	12848	1883	SESW	9.00
6N35E26C/1900	12848	1899	SESW	1.00
6N35E26C/1900	12848	1891	SESW	3.00
6N35E26C/200	13290	1875	NESW	3.00
6N35E26C/200	13290	1903	NESW	0.90
6N35E26C/200	13291	1908	NESW	0.60
6N35E26C/2000	12707	1878	SESW	2.55
6N35E26C/2000	12707	1905	SESW	5.90
6N35E26C/2000	12707	1893	SESW	4.90
6N35E26C/2100	12707	1878	SESW	0.35
6N35E26C/2100	12707	1893	SESW	1.00
6N35E26C/2100	12707	1905	SESW	1.00
6N35E26C/2100	12707	1878	SESW	0.10
6N35E26C/2200	12707	1893	SESW	0.10
6N35E26C/2200	12707	1905	SESW	0.10
6N35E26C/400	13271	1886	NESW	4.00
6N35E26C/400	13271	1908	NESW	0.50
6N35E26C/501	13290	1875	NESW	1.00
6N35E26C/501	13290	1903	NESW	0.40
6N35E26C/501	13291	1908	NESW	0.20
6N35E26C/600	13291	1908	NESW	3.95
6N35E26C/600	13290	1875	NESW	11.45
6N35E26C/600	13290	1903	NESW	2.60
6N35E26C/701	38660	1885	NESW	4.00
6N35E26C/701	38660	1908	NESW	3.50
6N35E26C/701	13291	1908	NESW	1.00

Legend

- PIPE
- Parcel
- QCDB
- WWRID Boundary

RECEIVED

SEP 14 2018

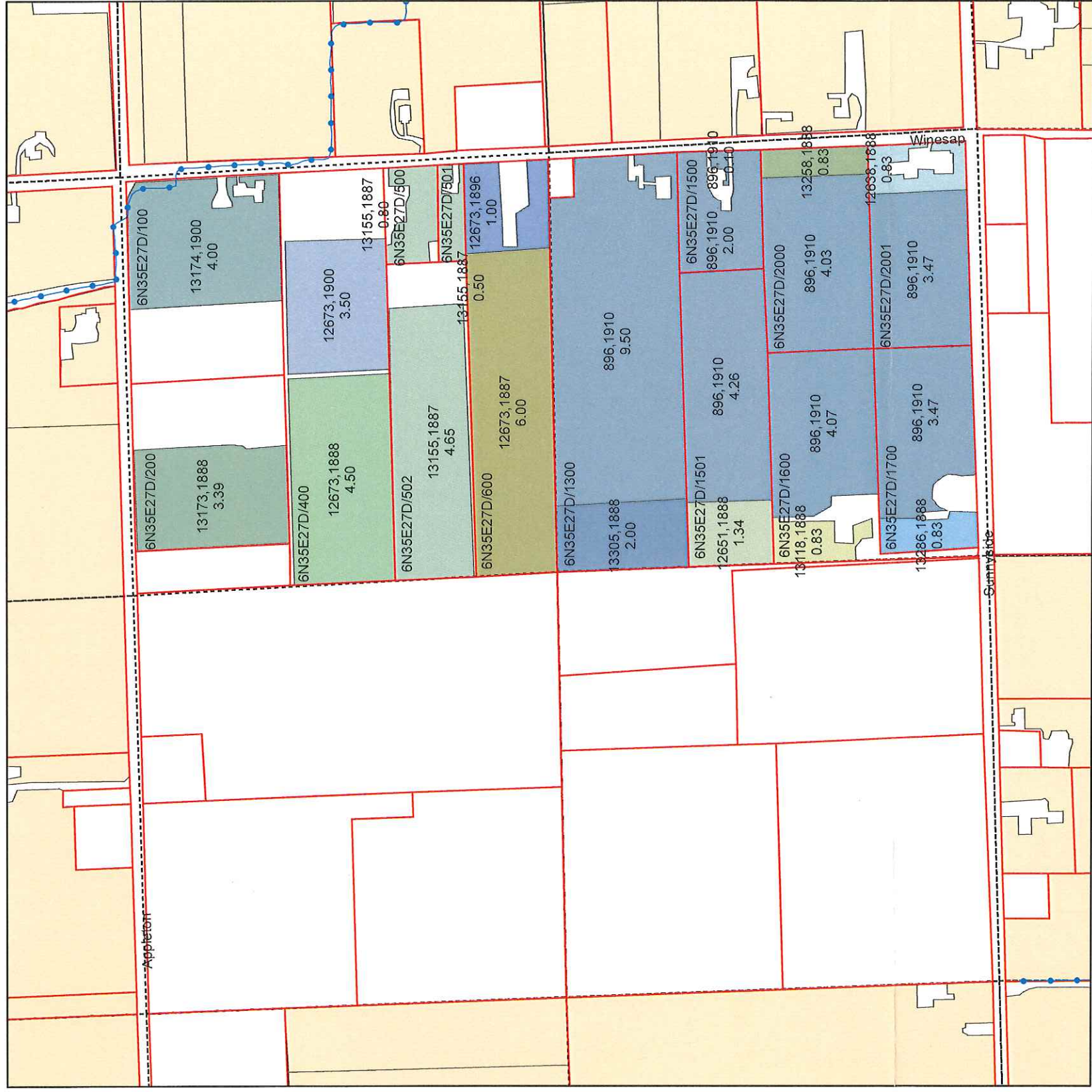
WATER RESOURCES DEPT
SALEM, OREGON



Date March 2011

Walla Walla River Irrigation District

3201 Water Rights Map



T6N R35E WM Section 27 SE Quarter

ASSESSORMAP	CERTIFICATE	PRIORITY	QQ	WR ACRES
6N35E27D/100	13174	1900	NESE	4.00
6N35E27D/1300	13305	1888	SESE	2.00
6N35E27D/1300	896	1910	SESE	9.50
6N35E27D/1500	896	1910	SESE	0.10
6N35E27D/1500	896	1910	SESE	2.00
6N35E27D/1501	896	1910	SESE	4.26
6N35E27D/1501	12651	1888	SESE	1.34
6N35E27D/1600	896	1910	SESE	4.07
6N35E27D/1600	13118	1888	SESE	0.83
6N35E27D/1700	13286	1888	SESE	0.83
6N35E27D/1700	896	1910	SESE	3.47
6N35E27D/200	13173	1888	NESE	3.39
6N35E27D/2000	13258	1888	SESE	0.83
6N35E27D/2000	896	1910	SESE	4.03
6N35E27D/2001	12638	1888	SESE	0.83
6N35E27D/2001	896	1910	SESE	3.47
6N35E27D/400	12673	1888	NESE	4.50
6N35E27D/400	12673	1900	NESE	3.50
6N35E27D/500	13155	1887	NESE	0.80
6N35E27D/501	13155	1887	NESE	0.50
6N35E27D/502	13155	1887	NESE	4.65
6N35E27D/600	12673	1896	NESE	1.00
6N35E27D/600	12673	1887	NESE	6.00

Primary Certificates

CERTIFICATE, PRIORITY

- 12638, 1888
- 12651, 1888
- 12673, 1887
- 12673, 1888
- 12673, 1896
- 12673, 1900
- 13118, 1888
- 13155, 1887
- 13173, 1888
- 13174, 1900
- 13258, 1888
- 13286, 1888
- 13305, 1888
- 896, 1910
- Water Rights Not Within Quarter

Legend

- PIPE
- Parcel
- QCDB
- WWRID Boundary

RECEIVED

SEP 14 2018

WATER RESOURCES DEPT
SALEM, OREGON

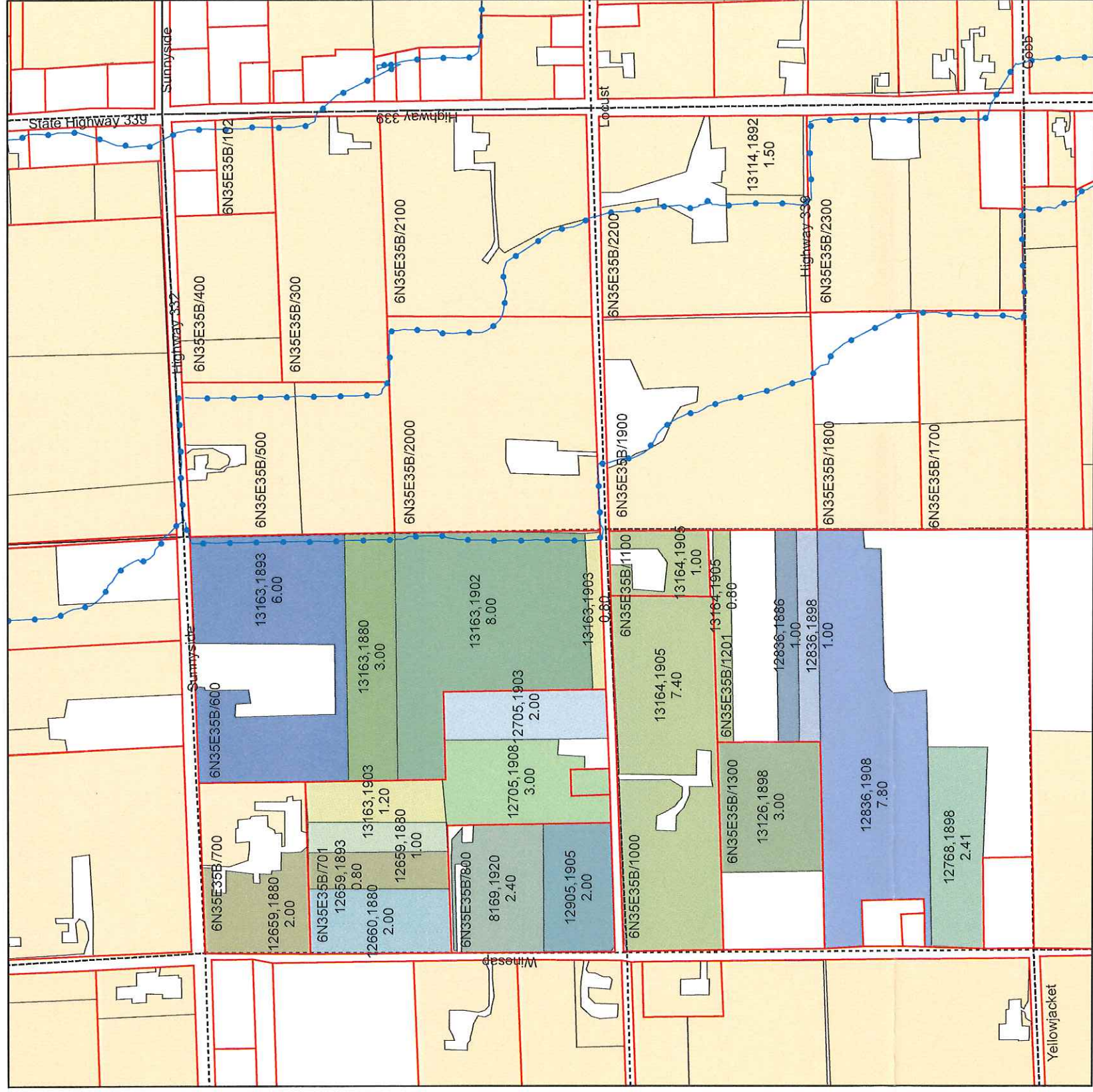


Water Rights Not Within Quarter

Date March 2011

Walla Walla River Irrigation District

3201 Water Rights Map



T6N R35E WM Section 35 W1/2 NW Quarter

Primary Certificates

- CERTIFICATE, PRIORITY**
- 12659, 1880
 - 12659, 1893
 - 12660, 1880
 - 12705, 1903
 - 12705, 1908
 - 12768, 1898
 - 12836, 1886
 - 12836, 1898
 - 12836, 1908
 - 12905, 1905
 - 13126, 1898
 - 13163, 1880
 - 13163, 1893
 - 13163, 1902
 - 13163, 1903
 - 13164, 1905
 - 8169, 1920

Water Rights Not Within Quarter

ASSESSORMAP	CERTIFICATE	PRIORITY	QQ	WR ACRES
6N35E35B/1000	13164	1905	SWNW	7.40
6N35E35B/1100	13164	1905	SWNW	1.00
6N35E35B/1201	12836	1908	SWNW	7.80
6N35E35B/1201	13164	1905	SWNW	0.80
6N35E35B/1201	12836	1886	SWNW	1.00
6N35E35B/1201	12836	1898	SWNW	1.00
6N35E35B/1201	12768	1898	SWNW	2.41
6N35E35B/1300	13126	1898	SWNW	3.00
6N35E35B/600	13163	1893	NWNW	6.00
6N35E35B/600	13163	1880	NWNW	3.00
6N35E35B/600	13163	1902	NWNW	8.00
6N35E35B/600	13163	1903	NWNW	0.80
6N35E35B/700	12659	1880	NWNW	2.00
6N35E35B/700	12659	1893	NWNW	1.20
6N35E35B/701	12659	1880	NWNW	1.00
6N35E35B/701	12705	1908	NWNW	3.00
6N35E35B/701	12705	1903	NWNW	2.00
6N35E35B/701	12660	1880	NWNW	2.00
6N35E35B/701	12659	1893	NWNW	0.80
6N35E35B/701	13163	1903	NWNW	1.20
6N35E35B/800	8169	1920	NWNW	2.40
6N35E35B/800	12905	1905	NWNW	2.00

Legend

- PIPE
- Parcel
- QCDB
- WWRID Boundary

RECEIVED

SEP 14 2018

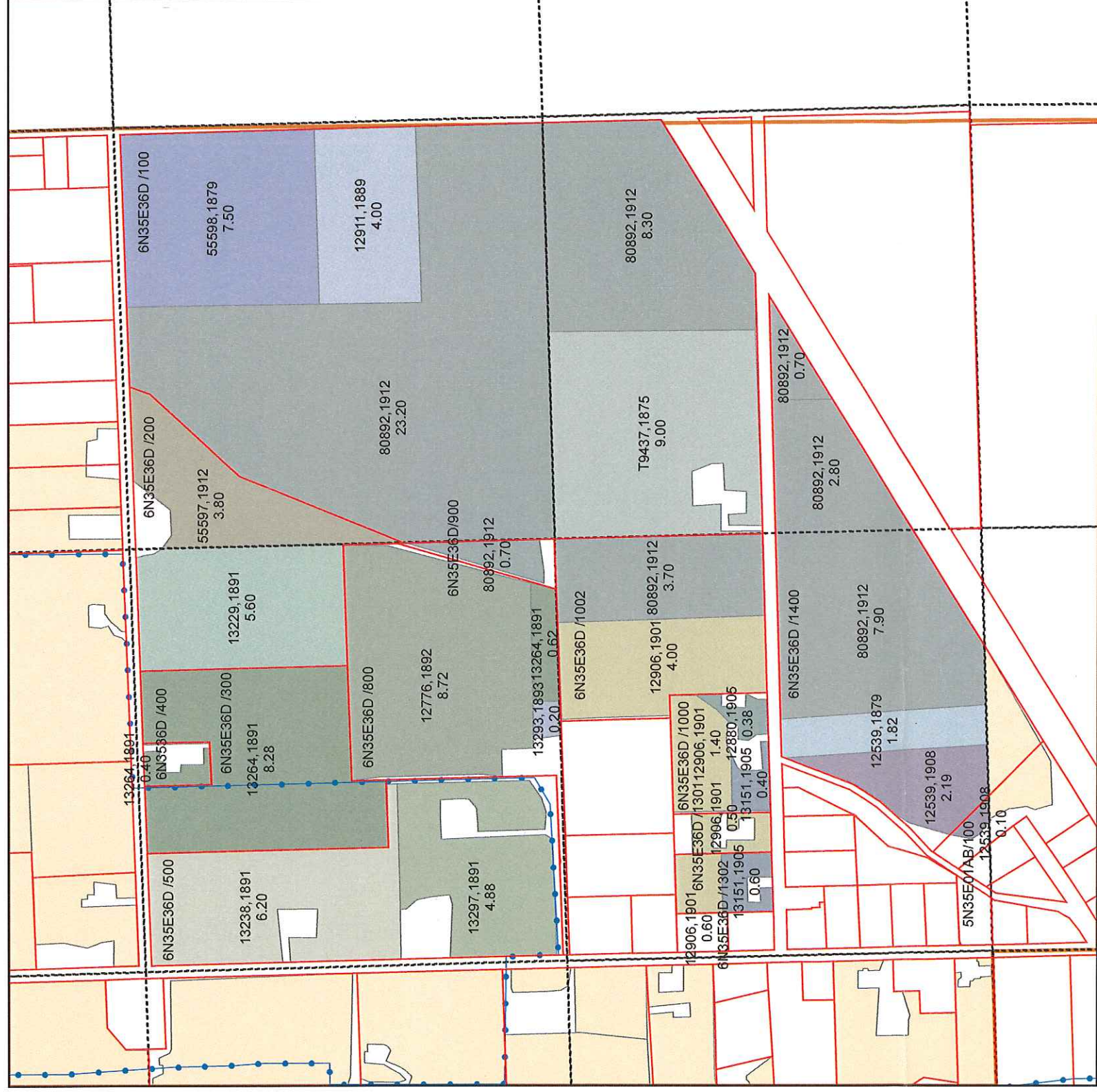
WATER RESOURCES DEPT
SALEM, OREGON



Date March 2011

Walla Walla River Irrigation District

3201 Water Rights Map



T6N R35E WM Section 36 SE Quarter

ASSESSORMAP	CERTIFICATE	PRIORITY	QQ	WR ACRES
5N35E01AB/100	12539	1908	SWSE	0.10
6N35E36A/400	13264	1891	NWSE	0.40
6N35E36A/800	12776	1892	NWSE	8.72
6N35E36A/800	13264	1891	NWSE	0.62
6N35E36A/800	13293	1893	NWSE	0.20
6N35E36D/100	12911	1889	NESE	4.00
6N35E36D/100	55598	1879	NESE	7.50
6N35E36D/100	80892	1912	NESE	23.20
6N35E36D/100	80892	1912	SESE	8.30
6N35E36D/100	T9437	1875	SESE	9.00
6N35E36D/1000	12880	1905	SWSE	0.38
6N35E36D/1000	12906	1901	SWSE	1.40
6N35E36D/1000	13151	1905	SWSE	0.40
6N35E36D/1002	12906	1901	SWSE	4.00
6N35E36D/1002	80892	1912	SWSE	3.70
6N35E36D/1301	12906	1901	SWSE	0.50
6N35E36D/1302	12906	1901	SWSE	0.60
6N35E36D/1302	13151	1905	SWSE	0.60
6N35E36D/1400	12539	1879	SWSE	1.82
6N35E36D/1400	12539	1908	SWSE	2.19
6N35E36D/1400	80892	1912	SESE	0.70
6N35E36D/1400	80892	1912	SWSE	7.90
6N35E36D/1400	80892	1912	SESE	2.80
6N35E36D/200	13229	1891	NWSE	5.60
6N35E36D/200	55597	1912	NESE	3.80
6N35E36D/300	13264	1891	NWSE	8.28
6N35E36D/500	13238	1891	NWSE	6.20
6N35E36D/500	13297	1891	NWSE	4.88
6N35E36D/900	80892	1912	NWSE	0.70

Primary Certificates

CERT, PRIORITY

- 12539, 1879
- 12539, 1908
- 12776, 1892
- 12880, 1905
- 12906, 1901
- 12911, 1889
- 13151, 1905
- 13229, 1891
- 13238, 1891
- 13264, 1891
- 13293, 1893
- 13297, 1891
- 55597, 1912
- 55598, 1879
- 80892, 1912
- T9437, 1875
- Water Rights Not Within Quarter

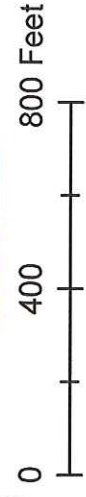
Legend

- PIPE
- Parcel
- QCDB
- WWRID Boundary

RECEIVED

SEP 14 2018

WATER RESOURCES DEPT
SALEM, OREGON

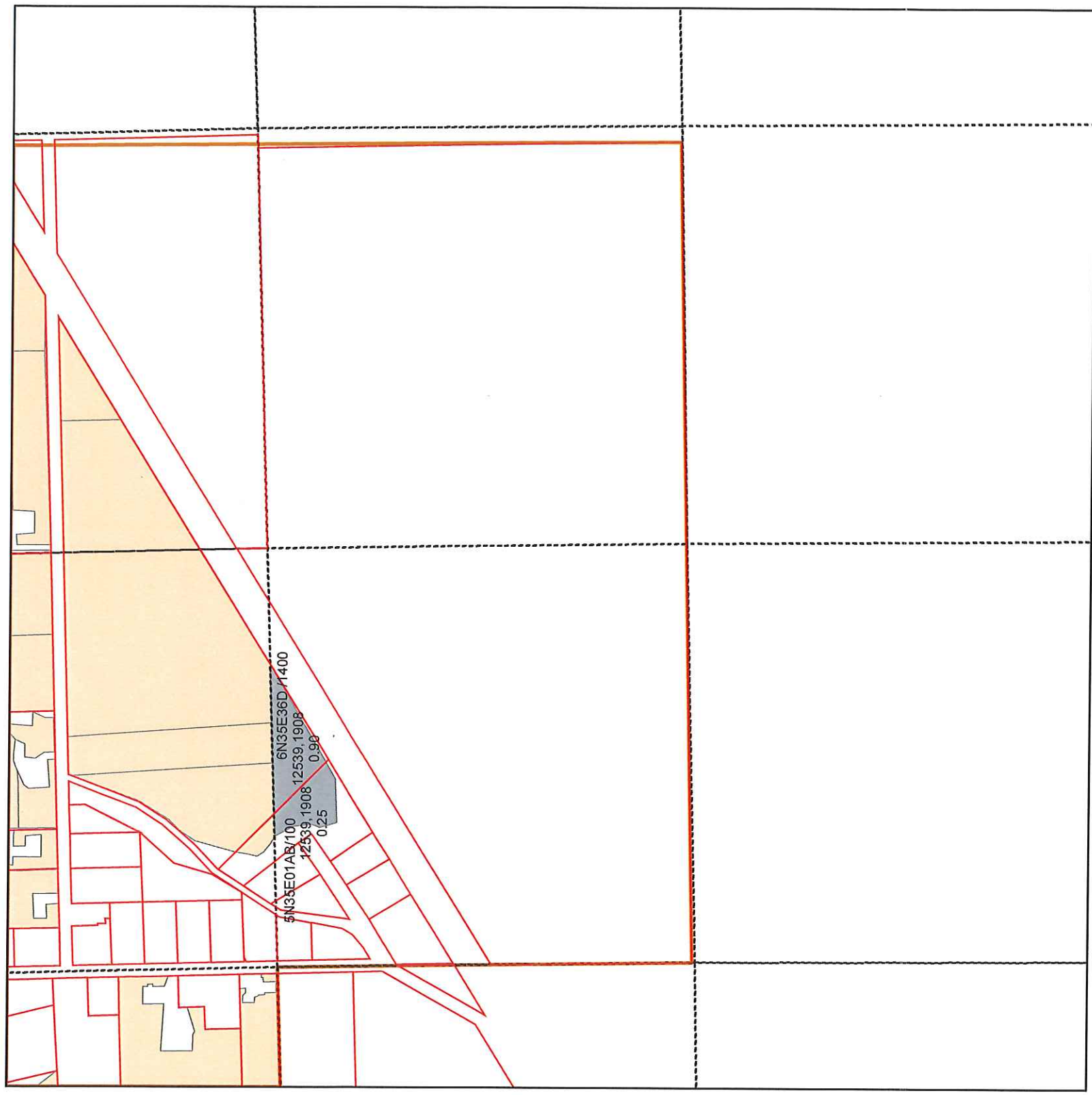


Water Rights Not Within Quarter

Date Nov 2007

Walla Walla River Irrigation District

3201 Water Rights Map

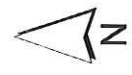


T5N R35E WM Section 1 NE Quarter

ASSESSORMAP	CERTIFICATE	PRIORITY	QQ	WR ACRES
5N35E01AB/100	12539	1908	NWNE	0.25
6N35E36D/1400	12539	1908	NWNE	0.90

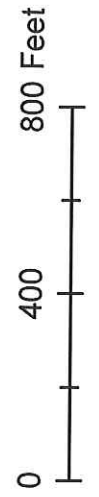
- CERT, PRIORITY**
- 12539, 1908
 - Water Rights Not Within Quarter

- Legend**
- PIPE
 - Parcel
 - QCDB
 - WWRID Boundary



RECEIVED

SEP 14 2018
 WATER RESOURCES DEPT
 SALEM, OREGON



Date Nov 2007