

Please use and attach additional pages of Table 2 as needed.  
See page 6 for instructions.

Do you have questions about how to fill-out the tables?  
Contact the Department at 503-986-0900 and ask for Transfer Staff.

**Table 2. Description of Changes to Water Right Certificate # 89791**  
List the change proposed for the acreage in each 1/4 1/4. If more than one change is proposed, specify the acreage associated with each change.  
POD 4 & 5

**AMENDED 10/4/2018**

**AUTHORIZED (the "from" or "off" lands)**  
The listing that appears on the certificate BEFORE PROPOSED CHANGES  
List only that part or portion of the water right that will be changed.

**PROPOSED (the "to" or "on" lands)**  
The listing as it would appear AFTER PROPOSED CHANGES  
are made.

Trwp	Rng	Sec	1/4	1/4	Tax Lot	Gvt Lot or DLC	Acre	Type of USE listed on Certificate	POD(s) or POA(s) (name or number from Table 1)	Priority Date	Proposed Changes (see "GOBRS" from previous page)	Trwp	Rng	Sec	1/4	1/4	Tax Lot	Gvt Lot or DLC	Acre	New Type of USE	POD(s) to be used (from Table 1)	Priority Date						
2	S	9	E	15	NE	NW	100	15.0	Irrigation	POD #1 POD #2	1901	POU/POD	2	S	9	E	1	NW	NW	500	1	10.0	POD #5 1901					
												POU/POD	17	S	20	E	3	SW	SW	400		4.0 P	POD 3 5/23/196					
												POU/POD	17	S	20	E	4	NE	SW	800		4.0 P	POD 3 5/23/196					
												POU/POD	17	S	20	E	4	SE	SW	800		4.0 P	POD 3 5/23/196					
												POU/POD	17	S	20	E	4	NW	SE	800		4.0 P	POD 3 5/23/196					
												POU/POD	17	S	20	E	4	SW	SE	800		4.0 P	POD 3 5/23/196					
												POU/POD	17	S	20	E	7	NE	NE	1100		4.3 S	POD 3 5/23/196					
												POU/POD	17	S	20	E	8	NW	NW	800		5.7 S	POD 3 5/23/196					
												POU/POD	17	S	20	E	9	NW	NE	800		0.6 P	POD 3 5/23/196					
												POU/POD	17	S	20	E	10	NW	NW	600		2.0 S P	POD 3 5/23/196					
TOTAL ACRES:												17.6 P	10.0 S	TOTAL ACRES:												18.8 P	17.6 P	10.0 S

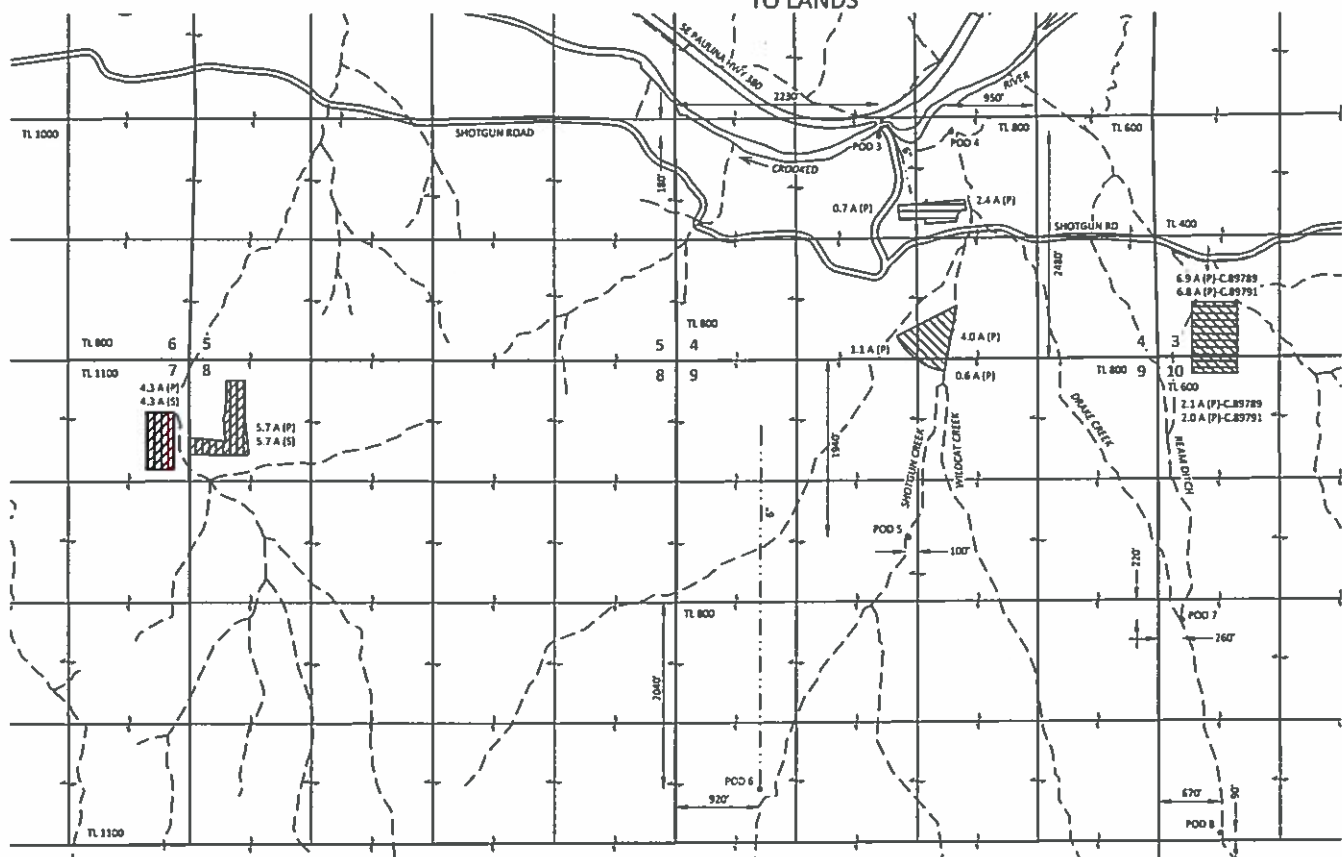
**RECEIVED**  
OCT 19 2018  
OWPRD








Additional remarks:

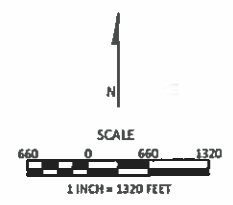
Sections 3, 4, 7, 8, 9, & 10, T17S, R20E, W.M.,  
Crook County, Oregon

AMENDED TRANSFER T-12990 APPLICATION MAP  
CROOKED RIVER EAST, LLC  
ELK FIELD TRANSFER  
TO LANDS

RECEIVED  
OCT 12 2018  
OWRD



- EXPLANATION**
- TO WATER RIGHTS**
-  CERTIFICATE 89789  
PRIORITY: APRIL 9, 1917  
IRRIGATION - 9.0 ACRES (P)
  -  CERTIFICATE 89790  
PRIORITY: 1889  
IRRIGATION - 10.0 ACRES (P)
  -  CERTIFICATE 89791  
PRIORITY: MAY 23, 1961  
IRRIGATION - 17.6 ACRES (P)
  -  CERTIFICATE 89791  
PRIORITY: MAY 23, 1961  
SUPPLEMENTAL IRRIGATION - 10.0 ACRES (S)
  -  POINT OF DIVERSION (POD)
  -  PRIMARY ACRES
  -  SUPPLEMENTAL ACRES



October 4, 2018

This map is not intended to provide legal  
dimensions or locations of property  
ownership lines

Figure 2

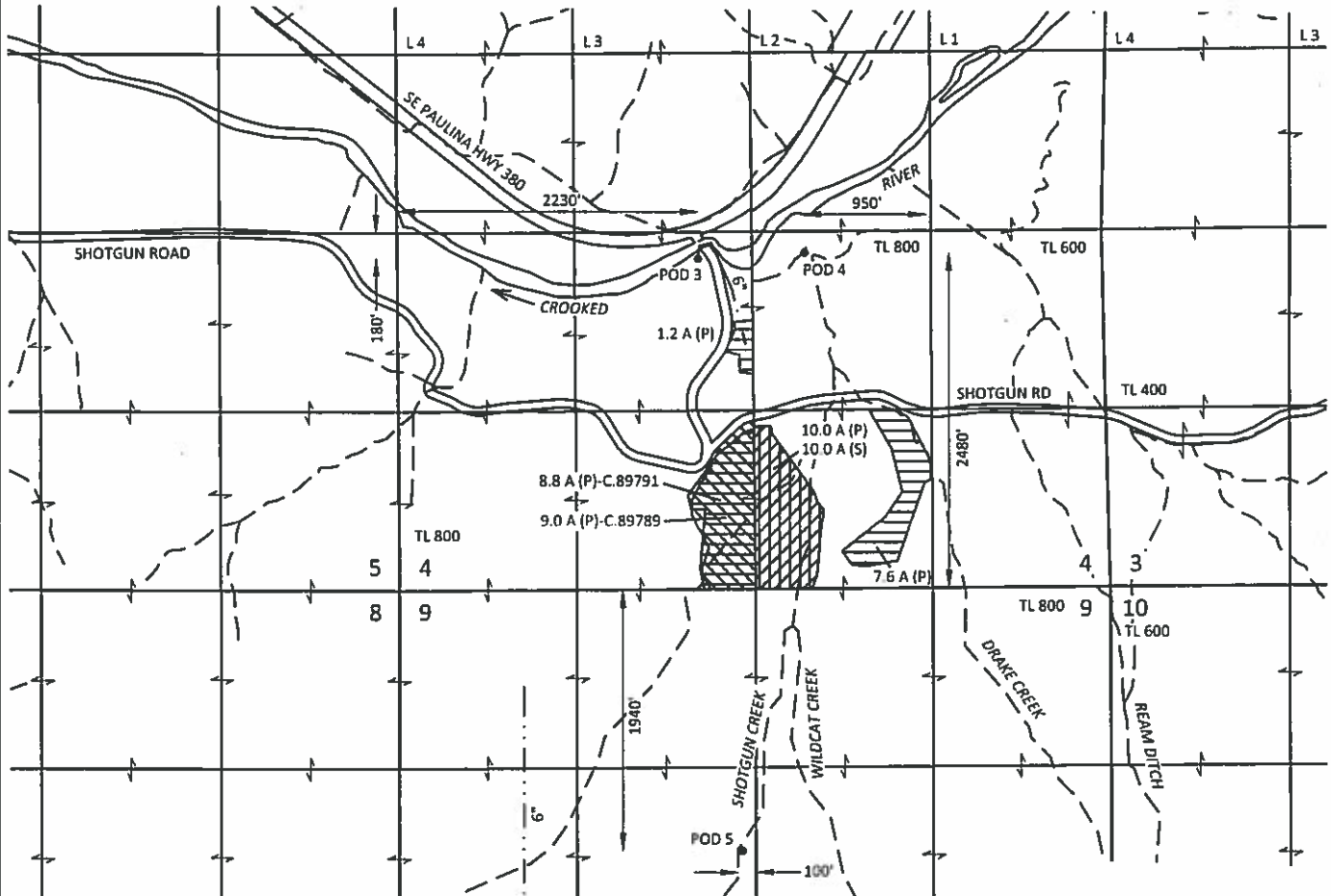
**SKOOKUM**  
WATER ASSOCIATES INC

1626 VICTORIAN WAY  
EUGENE, OR 97401  
(503) 319-8926

Section 4, T17S, R20E, W.M.,  
Crook County, Oregon





AMENDED TRANSFER T-12990 APPLICATION MAP  
CROOKED RIVER EAST, LLC

ELK FIELD TRANSFER  
FROM LANDS



EXPLANATION

FROM WATER RIGHTS

-  CERTIFICATE 89789  
PRIORITY: APRIL 9, 1917  
IRRIGATION - 9.0 ACRES (P)
-  CERTIFICATE 89790  
PRIORITY: 1889  
IRRIGATION - 10.0 ACRES (P)
-  CERTIFICATE 89791  
PRIORITY: MAY 23, 1961  
IRRIGATION - 17.6 ACRES (P)
-  CERTIFICATE 89791  
PRIORITY: MAY 23, 1961  
SUPPLEMENTAL IRRIGATION - 10.0 ACRES (S)
- POINT OF DIVERSION (POD)
- (P) PRIMARY ACRES
- (S) SUPPLEMENTAL ACRES

RECEIVED

OCT 12 2018

OWRD

**SKOOKUM**  
WATER ASSOCIATES INC

1626 VICTORIAN WAY  
EUGENE, OR 97401  
(503) 319-8926

SCALE



1 INCH = 1320 FEET

October 4, 2018

This map is not intended to provide legal  
dimensions or locations of property  
ownership lines

Figure 1