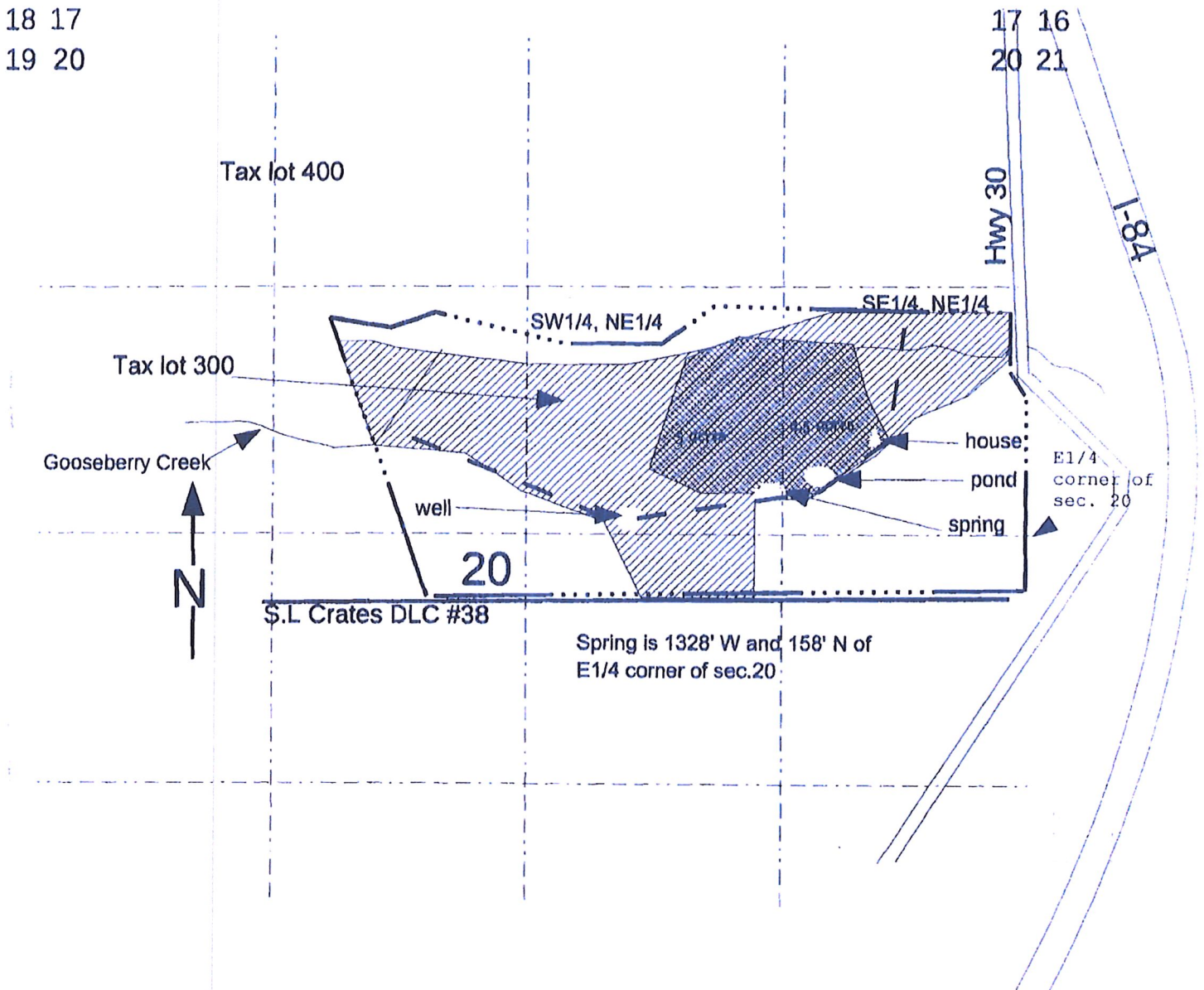


Section 20, T.2N, R.13E, W.M.




18 17  
19 20

17 16  
20 21



Spring is 1328' W and 158' N of E1/4 corner of sec.20

Legend:

-  Proposed water right transfer area = 9.5 acres
-  Property line (approx.) - Tax lot 300
-  4" irrigation line

Scale: 1" = 800'

RECEIVED

APR 08 2019

OWRD

RECEIVED BY OWRD

MAR 29 2013

SALEM, OR

13165

# TO LANDS

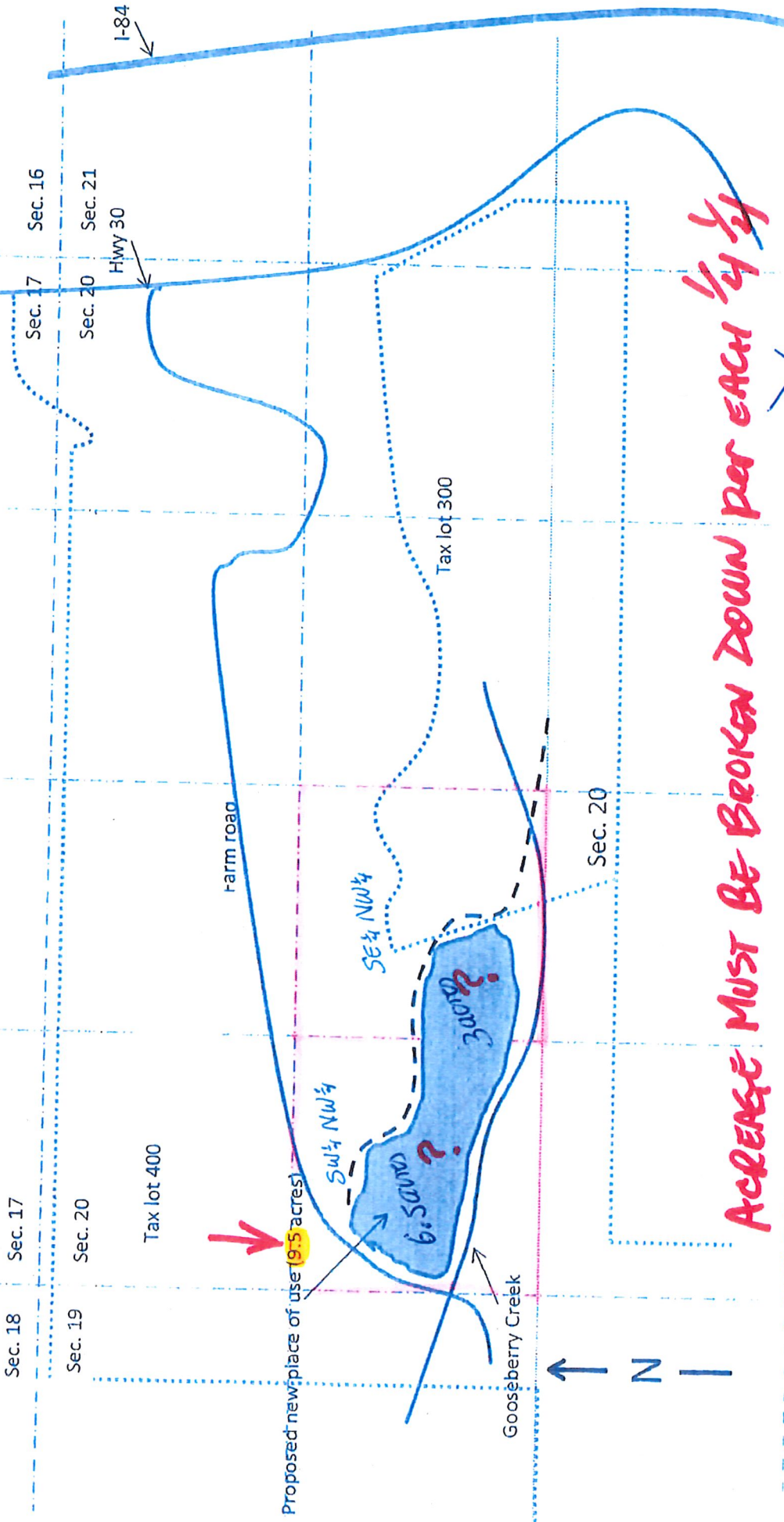
RECEIVED

APR 08 2019

Section 20, T2N, R13E, W.M.

OWRD

13165



Legend:

Proposed new area of use

4" irrigation line

Scale 1" = 800'

Tax property lines

ACREAGE MUST BE BROKEN DOWN PER EACH 1/4

30 acres SE NW  
6.5 acres SW NW

Answers

N I