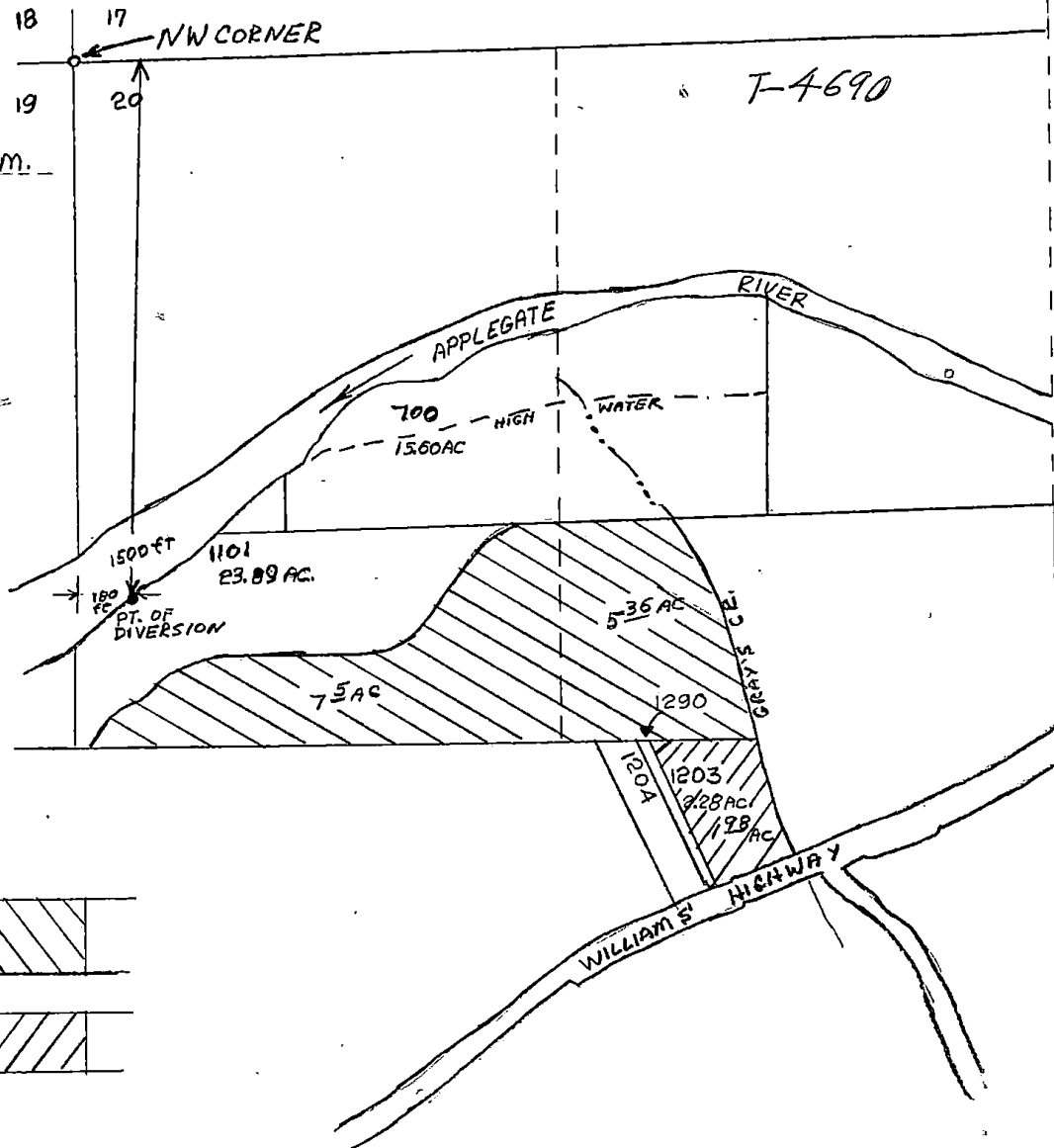


18
 17
 19
 20
 NW CORNER
 T-4690
 NW 1/4 SEC. 20, T. 37S., R. 6W., W.M.
 JOSEPHINE COUNTY

EXISTING WATER USAGE



LEGEND

CERT-32833	
CERT-32832	

RECEIVED

FEB 6 1981

WATER RESOURCES DEPT
SALEM, OREGON

T-4690

18 17 NW CORNER

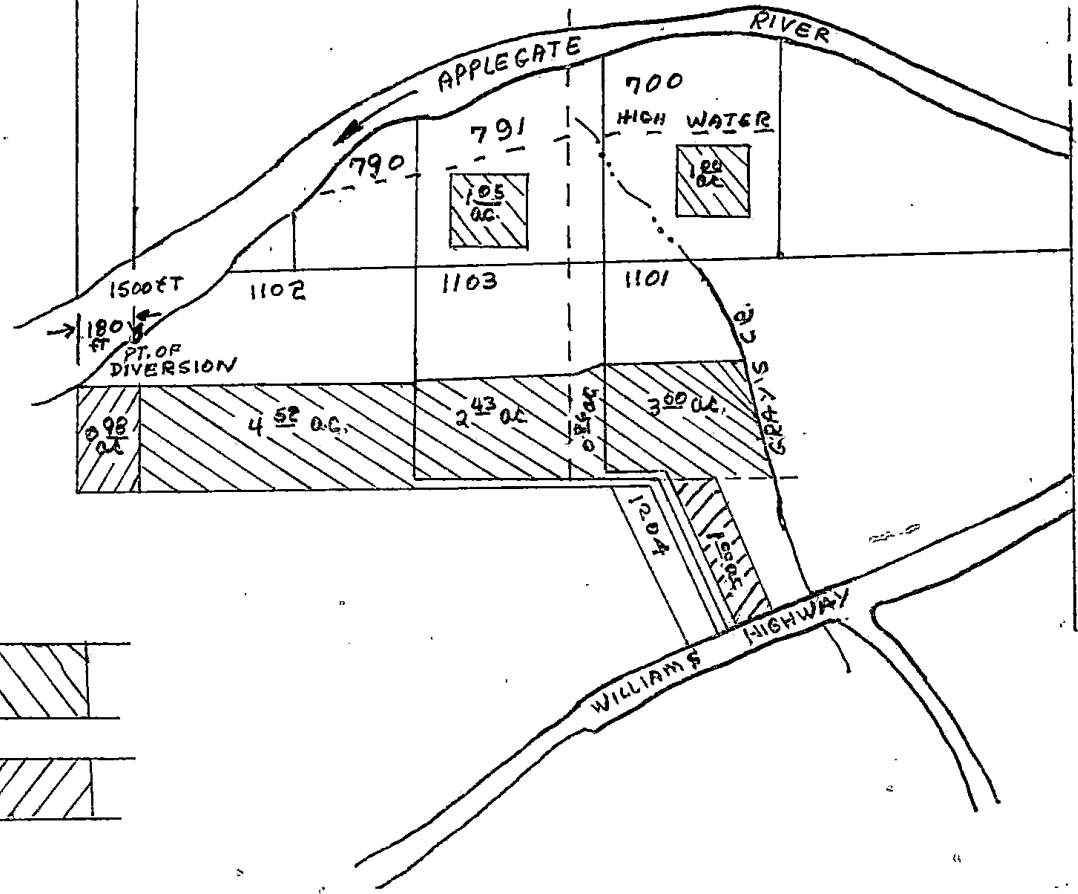
19 20



NW 1/4 SEC. 20 T. 37 S. R. 6 W. W. M.

JOSEPHINE COUNTY

PROPOSED WATER USAGE



LEGEND

CERT. 32833	
CERT. 32832	