

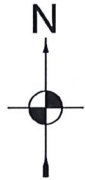
5 S 5 W 13 NE NE	66	13.5	IRRIG	FROM	1979	POA/POU	4 S 4 W 32 SW NW 1002 59	2.1	IRRIG	TO	1979
5 S 5 W 13 NW NE	66	11.6	IRRIG	FROM	1979	POA/POU	4 S 4 W 32 NW SW 1002 59	18.6	IRRIG	TO	1979
5 S 5 W 13 SW NE	66	22.1	IRRIG	FROM	1979	POA/POU	4 S 4 W 32 SW SW 1002 59	4.8	IRRIG	TO	1979
5 S 5 W 13 SE NE	66	22.8	IRRIG	FROM	1979						
5 S 5 W 13 NE NW	66	14.7	IRRIG	FROM	1979	POA/POU	4 S 4 W 32 SE SW 1203 59	4.0	IRRIG	TO	1979
5 S 5 W 13 NW NW	66	35.6	IRRIG	FROM	1979	POA/POU	4 S 4 W 32 SW SW 1203 59	12.5	IRRIG	TO	1979
5 S 5 W 13 SW NW	66	22.5	IRRIG	FROM	1979						
5 S 5 W 13 SE NW	66	13.4	IRRIG	FROM	1979	POA/POU	5 S 4 W 6 NE NE 600 37	10.0	IRRIG	TO	1979
						POA/POU	5 S 4 W 6 NE NE 600 6	0.7	IRRIG	TO	1979
						POA/POU	5 S 4 W 6 NW NE 600 -	15.2	IRRIG	TO	1979
						POA/POU	5 S 4 W 6 SW NE 600 -	7.2	IRRIG	TO	1979
		156.2						75.1			
		191.1					TOTAL ACRES	191.1			

Additional remarks:

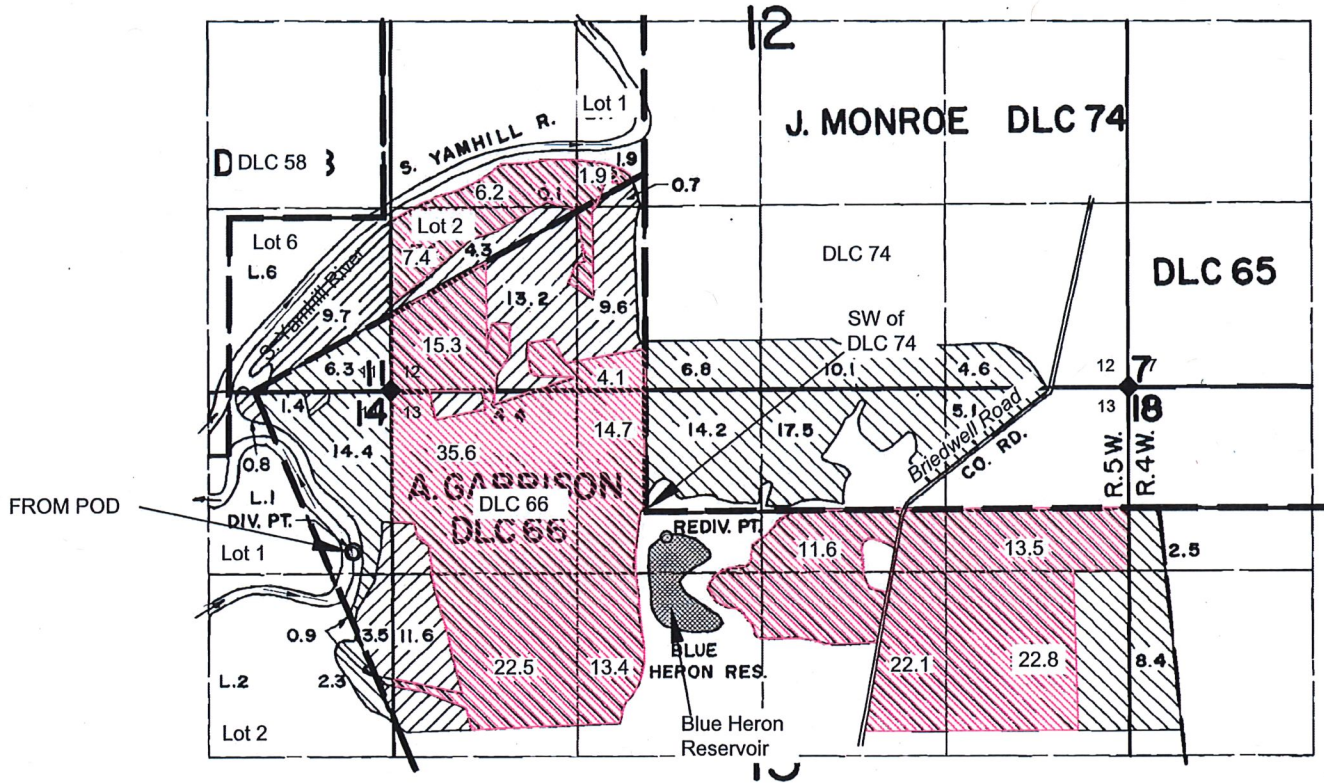
Revised
 Received by OWRD
 AUG 30 2019
 Salem, OR

Temporary Transfer "FROM" map

Sections 12 & 13, T5S, R5W, Yamhill County
Cert. 59044

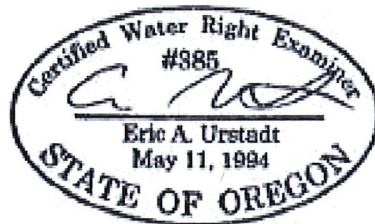


1 IN = 1320 FT
0 660 1320



FROM POD is 250 feet South and 2100 feet West of the SW corner DLC 74. 1 FT. S. AND 20 FT. E.; BOTH FROM THE S.W. CORNER OF MONROE DLC 74.

 CERT 59044 IRRIGATION LANDS MOVING = "FROM" LANDS



Revised

Received by OWRD

AUG 30 2019

Salem, OR

NOTES:

THIS MAP IS NOT INTENDED TO PROVIDE LEGAL DIMENSIONS OR LOCATIONS OF PROPERTY OWNERSHIP LINES.

- THIS MAP IS BASED ON THE MAP FOR CERT. 59044. DONATION LAND CLAIM, QUARTER-QUARTER, AND IRRIGATION AREAS ARE BASED ON THAT MAP. LABELS WERE CHANGED AS NEEDED.

-WATER CONVEYANCE LINES SHALL BE ALL WITHIN THE PROPERTY AND THEREFORE ARE NOT SHOWN.

MAP BY:
ASPEN RURAL LAND CONSULTING

ERIC URSTADT, PE, PLS
971-250-1520
Aug 2019
WVL-Durham3A