

THIS MAP IS FOR ASSESSMENT AND TAXATION PURPOSES ONLY

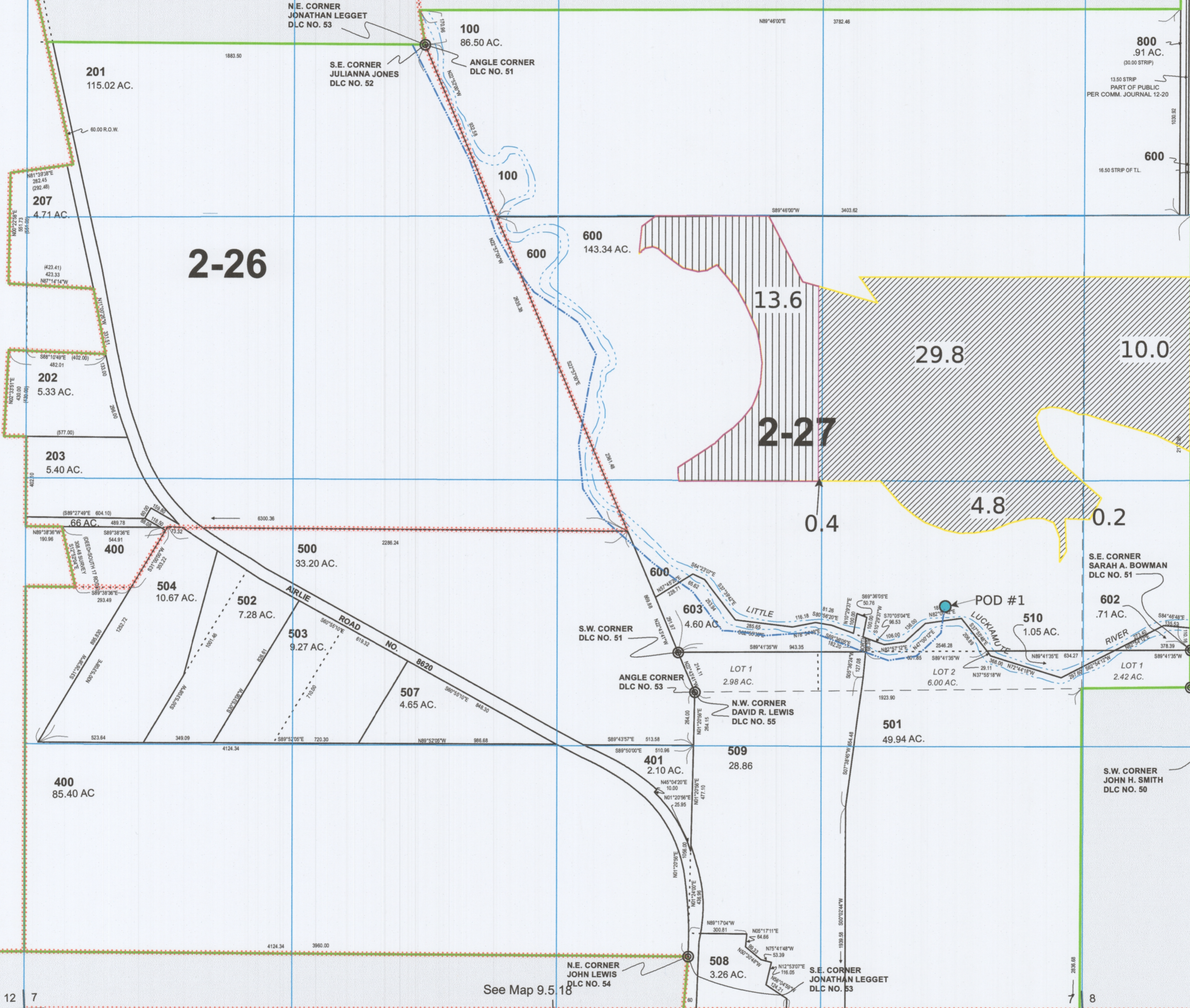
SEC. 7 T.9S. R.5W. W.M.
Polk County

Certificate 36915 FROM Lands

9.5.7

1" = 400'

1 6 6 5
12 7 7 8



See Map 9.5.6

See Map 9.6.12

See Map 9.5.18

Canceled No.

- 200
- 205
- 206
- 208
- 300
- 505
- 506
- 601
- 700



Legend

- FROM Lands
- Lands not involved in this Transfer.
- Pipeline
- POD #1 - 360' N and 1230' W from SE Corner, Bowman DLC No. 51; NE SE, Section 7, T. 9 S, R. 5 W, W.M.

2/13/2019

9.5.7