

THIS MAP IS FOR ASSESSMENT AND TAXATION PURPOSES ONLY

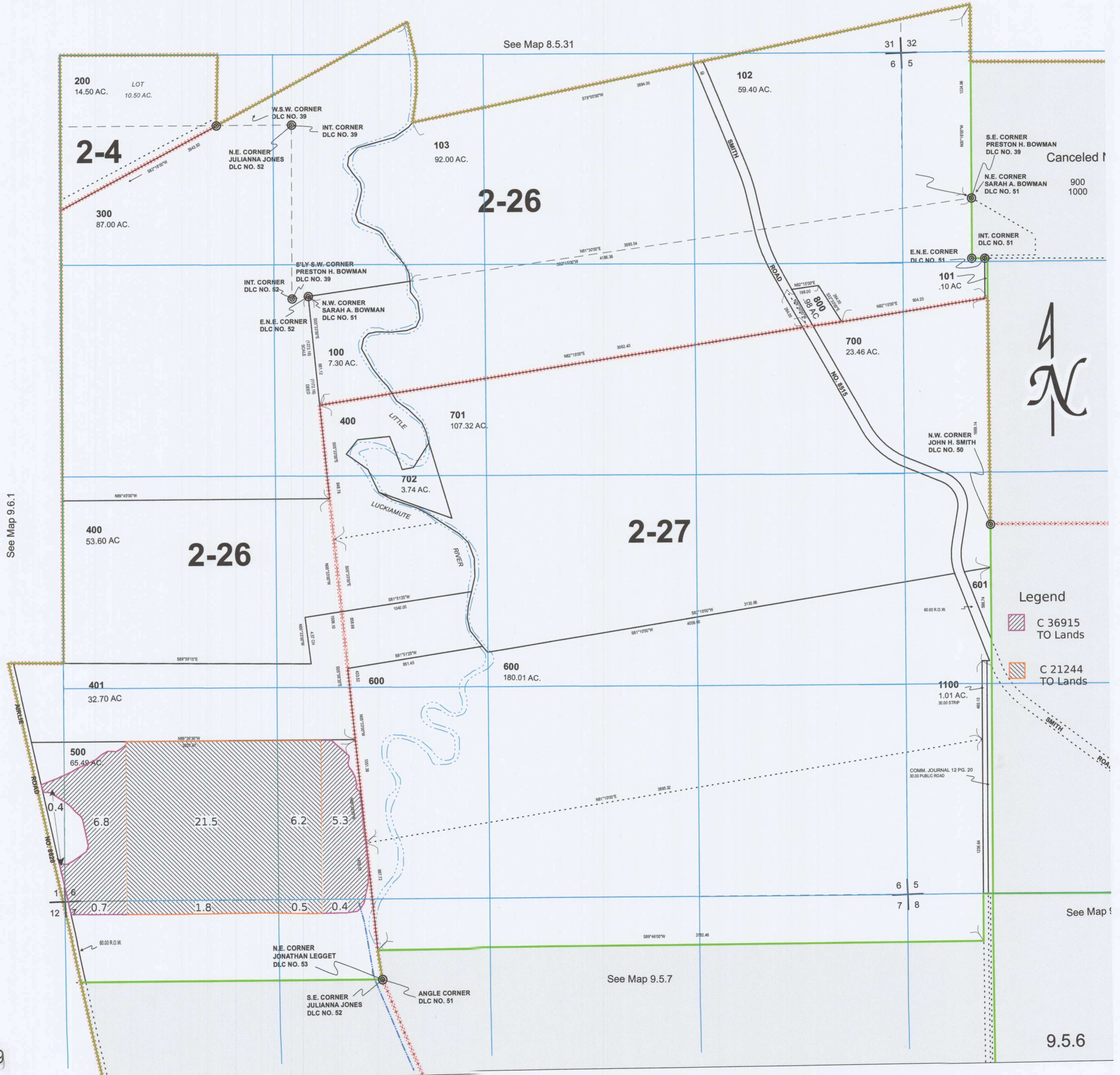
SEC. 6 T.9S. R.5W. W.M.

Certificates 21244 and 36915 TO lands

9.5.6

Polk County

1" = 400'



See Map 8.5.31

31 | 32

200  
14.50 AC. LOT  
10.50 AC.

102  
59.40 AC.

2-4

103  
92.00 AC.

2-26

S.E. CORNER  
PRESTON H. BOWMAN  
DLC NO. 39

Canceled

N.E. CORNER  
SARAH A. BOWMAN  
DLC NO. 51

900  
1000

300  
87.00 AC.

W.S.W. CORNER  
DLC NO. 39

N.E. CORNER  
JULIANNA JONES  
DLC NO. 52

INT. CORNER  
DLC NO. 39

E.N.E. CORNER  
DLC NO. 51

INT. CORNER  
DLC NO. 51

S'LY-S'W. CORNER  
PRESTON H. BOWMAN  
DLC NO. 39

INT. CORNER  
DLC NO. 52

N.W. CORNER  
SARAH A. BOWMAN  
DLC NO. 51

E.N.E. CORNER  
DLC NO. 52

101  
.10 AC.

100  
7.30 AC.

700  
23.46 AC.

400

701  
107.32 AC.

N.W. CORNER  
JOHN H. SMITH  
DLC NO. 50

2-26

2-27

400  
53.60 AC.

Legend

C 36915  
TO Lands

C 21244  
TO Lands

401  
32.70 AC.

600

600  
180.01 AC.

1100  
1.01 AC.  
30.00 STRIP

500  
65.49 AC.

6.8

21.5

6.2

5.3

1.6

0.7

1.8

0.5

0.4

6 | 5

7 | 8

N.E. CORNER  
JONATHAN LEGGET  
DLC NO. 53

S.E. CORNER  
JULIANNA JONES  
DLC NO. 52

ANGLE CORNER  
DLC NO. 51

See Map 9.5.7

See Map 9.5.7

2/13/2019

9.5.6