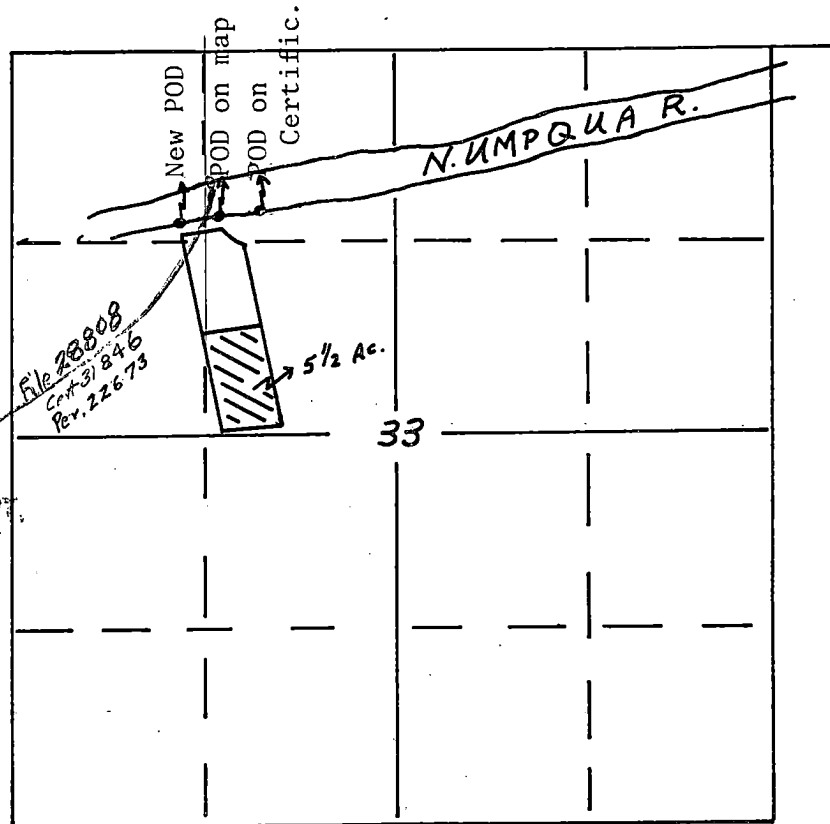


Township 26 South, Range 6 West
Section 33



RECEIVED
AUG 21 1975
WATER RESOURCES DEPT.
SALEM, OREGON

Old POD - 1576' North and 1646' East from the $\frac{1}{4}$ cor. between sec. 32 and 33.

New POD - 1180' South and 1150' East from the NW Cor. Sec. 33

4" = 1 mile



T-3300