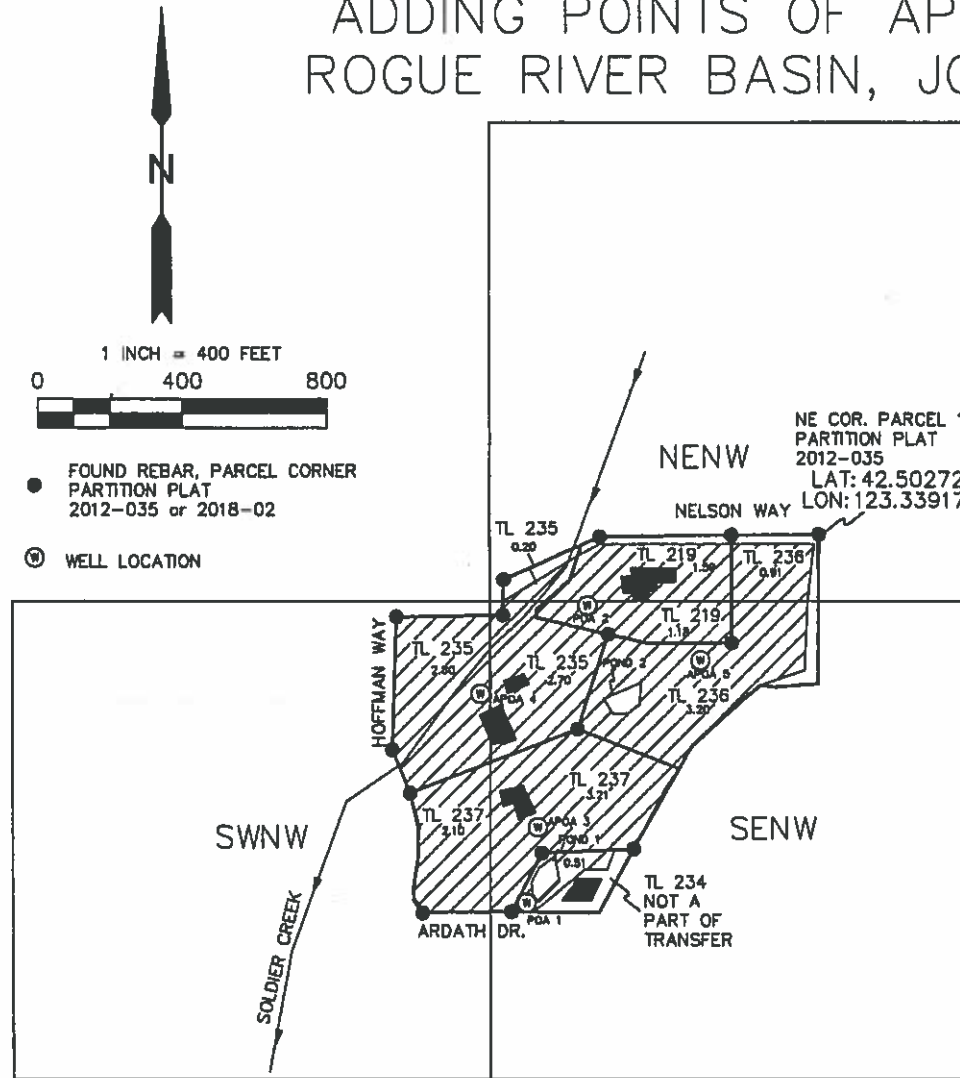


MAP FOR WATER RIGHT TRANSFER
 LOCATED IN NW ¼ of Sec. 30, T35S, R5W, W.M.
 PARTITION PLAT 2012-035 & 2012-02
 ADDING POINTS OF APPROPRIATION TO G-47713
 ROGUE RIVER BASIN, JOSEPHINE COUNTY, OREGON



TL 219
 (Parcel 3 of Partition Plat 2012-035)
 NENW = 1.59
 SE NW = 1.18
 SOURCE = POA 2

TL 234 (Not a part of transfer)
 (Parcel 2 of Partition Plat 2012-035)
 SENW = 0.51 & Pond 1
 SOURCE = POA 1

TL 235
 (Parcel 1 of Partition Plat 2018-02)
 SENW = 2.70
 SWNW = 2.80
 NENW = 0.20
 SOURCE = APOA 4

TL 236
 (Parcel 2-of Partition Plat 2018-02)
 NENW = 0.91
 SE NW = 3.20 & Pond 2
 SOURCE = APOA 5

TL 237
 (Parcel 3 of Partition Plat 2018-02)
 SENW = 3.21
 SW NW = 2.10
 SOURCE APOA 3

Character of Use = Irrigation
 Priority Date = 9/7/1972

WELL DATA (Rate Specified per Well)
 POA 1 (0.006 CFS)
 LAT: 42.50001
 LON: 123.34210
 POA 2 (0.034 CFS)
 LAT: 42.50228
 LON: 123.34160
 APOA 3 (0.067 CFS)
 LAT: 42.50064
 LON: 123.34204
 APOA 4 (0.067 CFS)
 LAT: 42.50159
 LON: 123.34262
 APOA 5 (0.057 CFS)
 LAT: 42.50188
 LON: 123.34044
 TOTAL CFS = 0.23
 ELEVATION OF WELLS = 1300 - 1310
 FEET NAVD 88

1 INCH = 400 FEET
 0 400 800
 ● FOUND REBAR, PARCEL CORNER
 PARTITION PLAT
 2012-035 or 2018-02
 ⊙ WELL LOCATION

FIELD SURVEY: SEPTEMBER 2018

MAP FOR WATER RIGHT PURPOSES ONLY
 NOT FOR PROPERTY BOUNDARY LOCATION
 NOT FOR PROPERTY DIMENSIONS
 NO UNAUTHORIZED REPRODUCTION OR MODIFICATION

Prepared For:
 Hanley
 Kilz
 Doyle

Prepared By:
 Scott Fein, CWRE
 600 Tyler Creek Rd.
 Ashland, OR 97520
 sfeinsurveyor@gmail.com
 541-842-0795



Received by OWRD
 NOV 29 2019
 Salem, OR

10/30/19