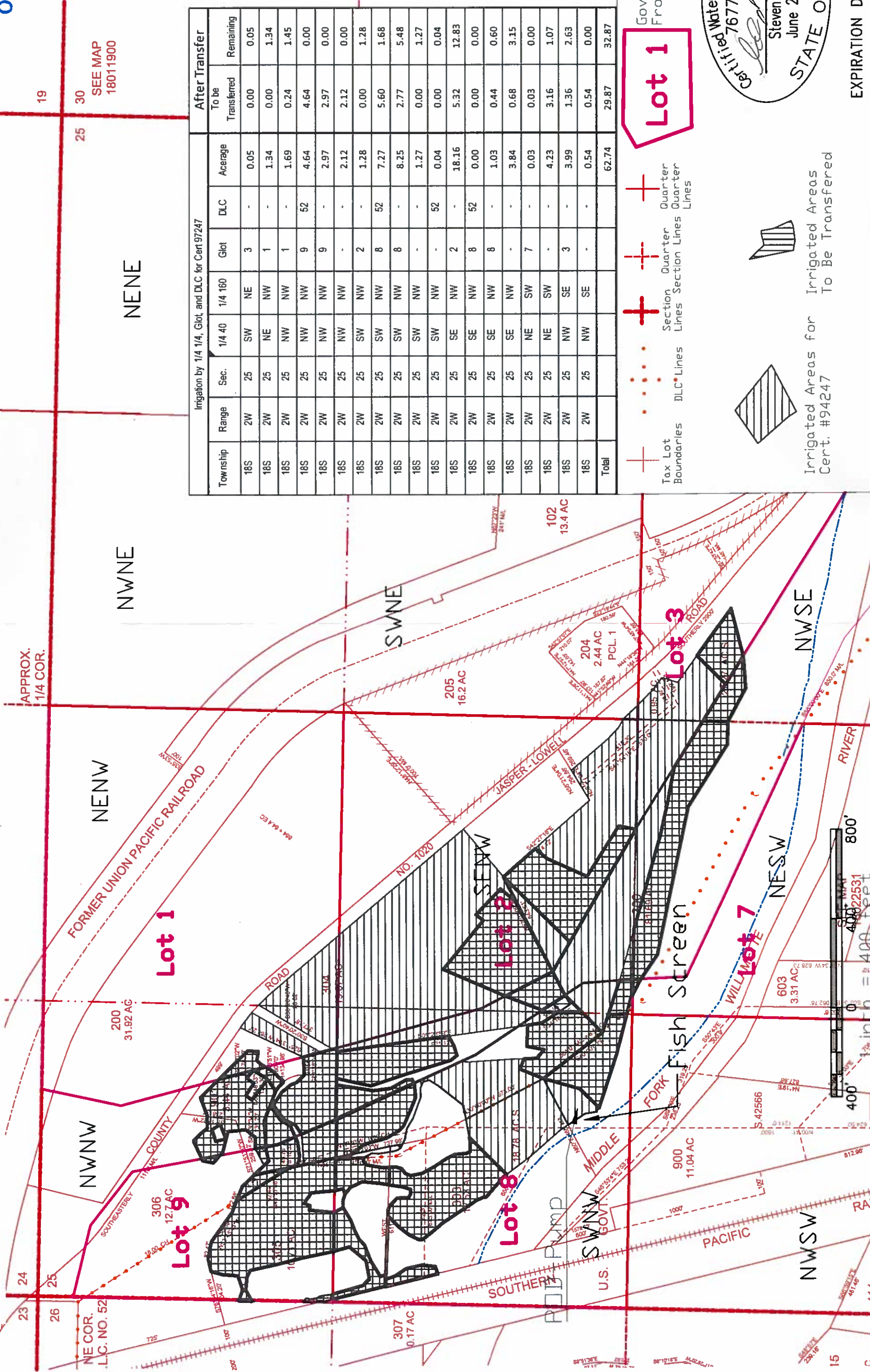


THIS MAP IS NOT INTENDED TO PROVIDE LEGAL DIMENSIONS OR LOCATIONS OF PROPERTY OWNERSHIP LINES.

From Lands For Transfer Application From Certificate 94247
Township 18 S Range 2 W Section 25

RECEIVED
OCT 12 2020
OWRD



Irrigation by 1/4 1/4, Glot, and DLC for Cert 97247

| Township | Range | Sec. | 1/4 40 | 1/4 160 | Glot | DLC | Aceage | To be Transferred | Remaining |
|----------|-------|------|--------|---------|------|-----|--------|-------------------|-----------|
| 18S | 2W | 25 | SW | NE | 3 | - | 0.05 | 0.00 | 0.05 |
| 18S | 2W | 25 | NE | NW | 1 | - | 1.34 | 0.00 | 1.34 |
| 18S | 2W | 25 | NW | NW | 1 | - | 1.69 | 0.24 | 1.45 |
| 18S | 2W | 25 | NW | NW | 9 | 52 | 4.64 | 4.64 | 0.00 |
| 18S | 2W | 25 | NW | NW | 9 | - | 2.97 | 2.97 | 0.00 |
| 18S | 2W | 25 | NW | NW | - | - | 2.12 | 2.12 | 0.00 |
| 18S | 2W | 25 | SW | NW | 2 | - | 1.28 | 0.00 | 1.28 |
| 18S | 2W | 25 | SW | NW | 8 | 52 | 7.27 | 5.60 | 1.68 |
| 18S | 2W | 25 | SW | NW | 8 | - | 8.25 | 2.77 | 5.48 |
| 18S | 2W | 25 | SW | NW | - | - | 1.27 | 0.00 | 1.27 |
| 18S | 2W | 25 | SW | NW | - | 52 | 0.04 | 0.00 | 0.04 |
| 18S | 2W | 25 | SE | NW | 2 | - | 18.16 | 5.32 | 12.83 |
| 18S | 2W | 25 | SE | NW | 8 | 52 | 0.00 | 0.00 | 0.00 |
| 18S | 2W | 25 | SE | NW | 8 | - | 1.03 | 0.44 | 0.60 |
| 18S | 2W | 25 | SE | NW | - | - | 3.84 | 0.68 | 3.15 |
| 18S | 2W | 25 | NE | SW | 7 | - | 0.03 | 0.03 | 0.00 |
| 18S | 2W | 25 | NE | SW | - | - | 4.23 | 3.16 | 1.07 |
| 18S | 2W | 25 | NW | SE | 3 | - | 3.99 | 1.36 | 2.63 |
| 18S | 2W | 25 | NW | SE | - | - | 0.54 | 0.54 | 0.00 |
| Total | | | | | | | 62.74 | 29.87 | 32.87 |

Lot 1

Government Lots From 1855 Map

Certified Water Right Examiner
Steven I Recca
June 29, 2007
STATE OF OREGON

EXPIRATION DATE: 12/31/20



Irrigated Areas for Cert. #94247
Irrigated Areas To Be Transferred