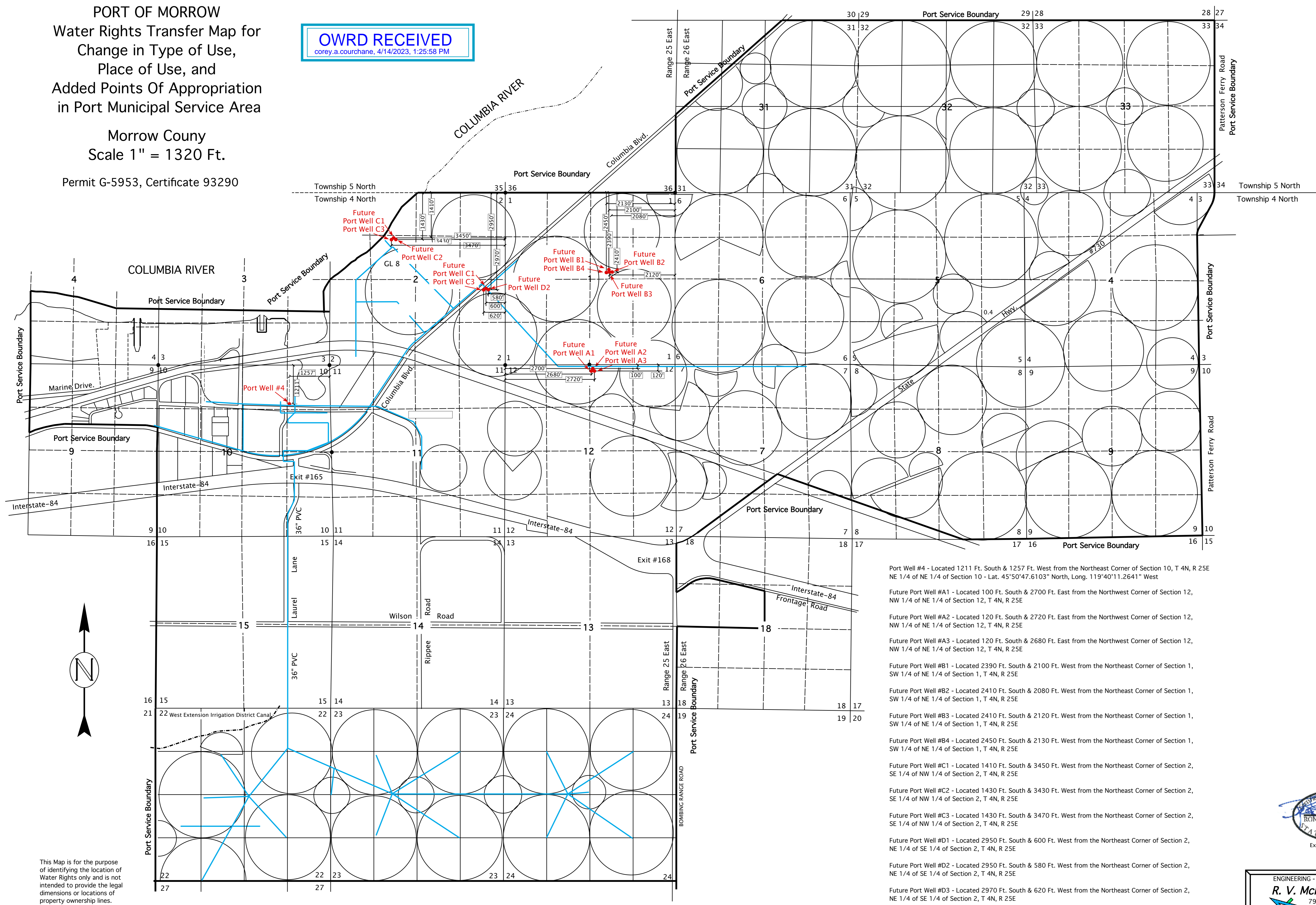


**PORT OF MORROW**  
 Water Rights Transfer Map for  
 Change in Type of Use,  
 Place of Use, and  
 Added Points Of Appropriation  
 in Port Municipal Service Area

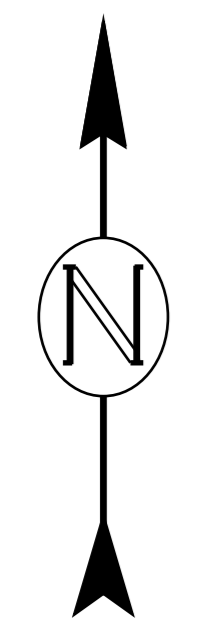
Morrow County  
 Scale 1" = 1320 Ft.

Permit G-5953, Certificate 93290

**OWRD RECEIVED**  
 corey.a.courchane, 4/14/2023, 1:25:58 PM



- Port Well #4 - Located 1211 Ft. South & 1257 Ft. West from the Northeast Corner of Section 10, T 4N, R 25E NE 1/4 of NE 1/4 of Section 10 - Lat. 45°50'47.6103" North, Long. 119°40'11.2641" West
- Future Port Well #A1 - Located 100 Ft. South & 2700 Ft. East from the Northwest Corner of Section 12, NW 1/4 of NE 1/4 of Section 12, T 4N, R 25E
- Future Port Well #A2 - Located 120 Ft. South & 2720 Ft. East from the Northwest Corner of Section 12, NW 1/4 of NE 1/4 of Section 12, T 4N, R 25E
- Future Port Well #A3 - Located 120 Ft. South & 2680 Ft. East from the Northwest Corner of Section 12, NW 1/4 of NE 1/4 of Section 12, T 4N, R 25E
- Future Port Well #B1 - Located 2390 Ft. South & 2100 Ft. West from the Northeast Corner of Section 1, SW 1/4 of NE 1/4 of Section 1, T 4N, R 25E
- Future Port Well #B2 - Located 2410 Ft. South & 2080 Ft. West from the Northeast Corner of Section 1, SW 1/4 of NE 1/4 of Section 1, T 4N, R 25E
- Future Port Well #B3 - Located 2410 Ft. South & 2120 Ft. West from the Northeast Corner of Section 1, SW 1/4 of NE 1/4 of Section 1, T 4N, R 25E
- Future Port Well #B4 - Located 2450 Ft. South & 2130 Ft. West from the Northeast Corner of Section 1, SW 1/4 of NE 1/4 of Section 1, T 4N, R 25E
- Future Port Well #C1 - Located 1410 Ft. South & 3450 Ft. West from the Northeast Corner of Section 2, SE 1/4 of NW 1/4 of Section 2, T 4N, R 25E
- Future Port Well #C2 - Located 1430 Ft. South & 3430 Ft. West from the Northeast Corner of Section 2, SE 1/4 of NW 1/4 of Section 2, T 4N, R 25E
- Future Port Well #C3 - Located 1430 Ft. South & 3470 Ft. West from the Northeast Corner of Section 2, SE 1/4 of NW 1/4 of Section 2, T 4N, R 25E
- Future Port Well #D1 - Located 2950 Ft. South & 600 Ft. West from the Northeast Corner of Section 2, NE 1/4 of SE 1/4 of Section 2, T 4N, R 25E
- Future Port Well #D2 - Located 2950 Ft. South & 580 Ft. West from the Northeast Corner of Section 2, NE 1/4 of SE 1/4 of Section 2, T 4N, R 25E
- Future Port Well #D3 - Located 2970 Ft. South & 620 Ft. West from the Northeast Corner of Section 2, NE 1/4 of SE 1/4 of Section 2, T 4N, R 25E



This Map is for the purpose of identifying the location of Water Rights only and is not intended to provide the legal dimensions or locations of property ownership lines.



**ENGINEERING - LAND SURVEYING - WATER RIGHTS**  
**R. V. MCKINNIS ENGINEERING**  
 79980 Prindle Loop Road  
 Hermiston, Oregon 97838  
 (541) 567-2017

Rev. 04-14-2023