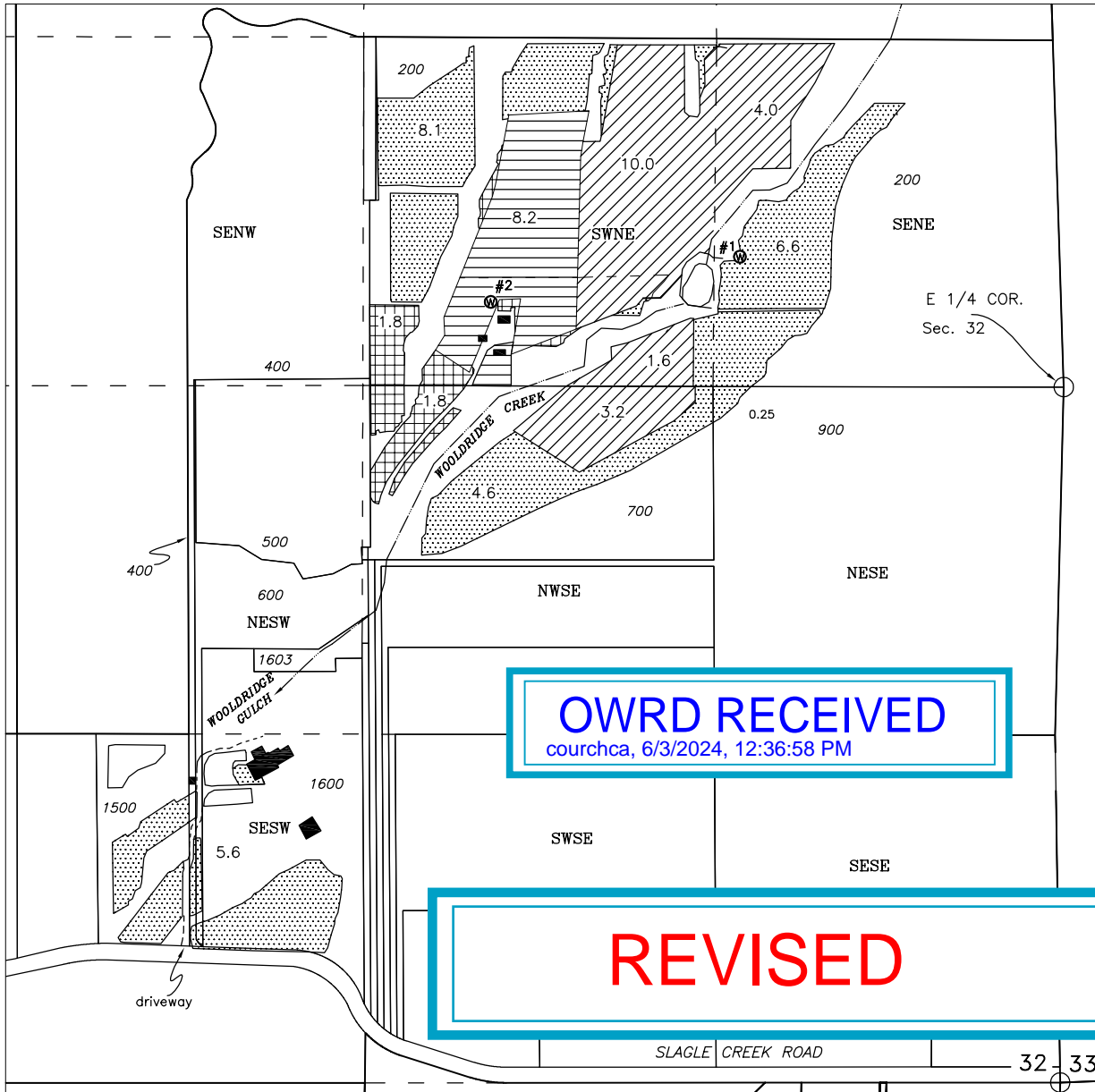


TOWNSHIP 37 SOUTH, RANGE 4 WEST, W.M. SECTION 32  
JACKSON COUNTY, OREGON

ALLOCATION OF CONSERVED WATER  
CERTIFICATE 52048

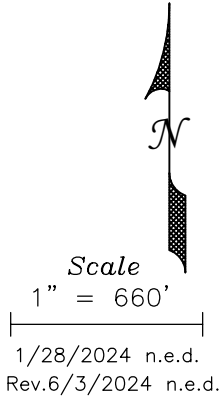
(Revision CW-141)




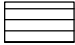
**OWRD RECEIVED**  
courchca, 6/3/2024, 12:36:58 PM


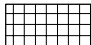
**REVISED**

**PROPERTY OWNERS**  
Tax Lots 200,700 & 900  
Wooldridge Creek Vineyard, LLC  
818 Slagle Creek Road  
Grants Pass, OR 97527  
  
Tax Lots 1500, 1600  
Warrick Vineyard, LLC  
818 Slagle Creek Road  
Grants Pass, OR 97527



Conserved Water – Applicant 75%  
0.143 CFS Conserved Water 28.35 AF  
Conserved Water – State 25%  
0.047 CFS Conserved Water 9.45 AF

Certificate 52048			
Well-1		18.8 Ac. 0.24 CFS	Reduced to 0.105CFS Reduced to 20.68 AF
Well-2		8.2 Ac. 0.10 CFS	Reduced to 0.045 CFS Reduced to 9.02 AF

Place of Use of Conserved Water	
Irrigation	
	Well-1, 25.15 Acres Conserved Water 0.125 CFS, 24.85 AF
	Well-2, 3.6 Acres Conserved Water 0.018 CFS, 3.5 AF
Well #1	not to exceed 0.23 CFS & 45.53 AF under C-52048 & conserved water
Well #2	not to exceed 0.063 CFS & 12.52 AF under C-52048 & conserved water

This map is not intended to provide legal dimensions or locations of property ownership lines

- Ⓜ #1 SE/NE 500 feet North & 1,225 feet West from the E 1/4 Corner Section 32
  - Ⓜ #2 SW/NE 350 feet North & 2,185 feet West from the E 1/4 Corner Section 32
- Location of wells from Certificate 52048

**SUPERIOR WATER RIGHT CONSULTING LLC.**  
245 GLENOAK LANE  
GRANTS PASS, OR 97526  
PHONE (541) 761-1057  
normthewaterguy@charter.net