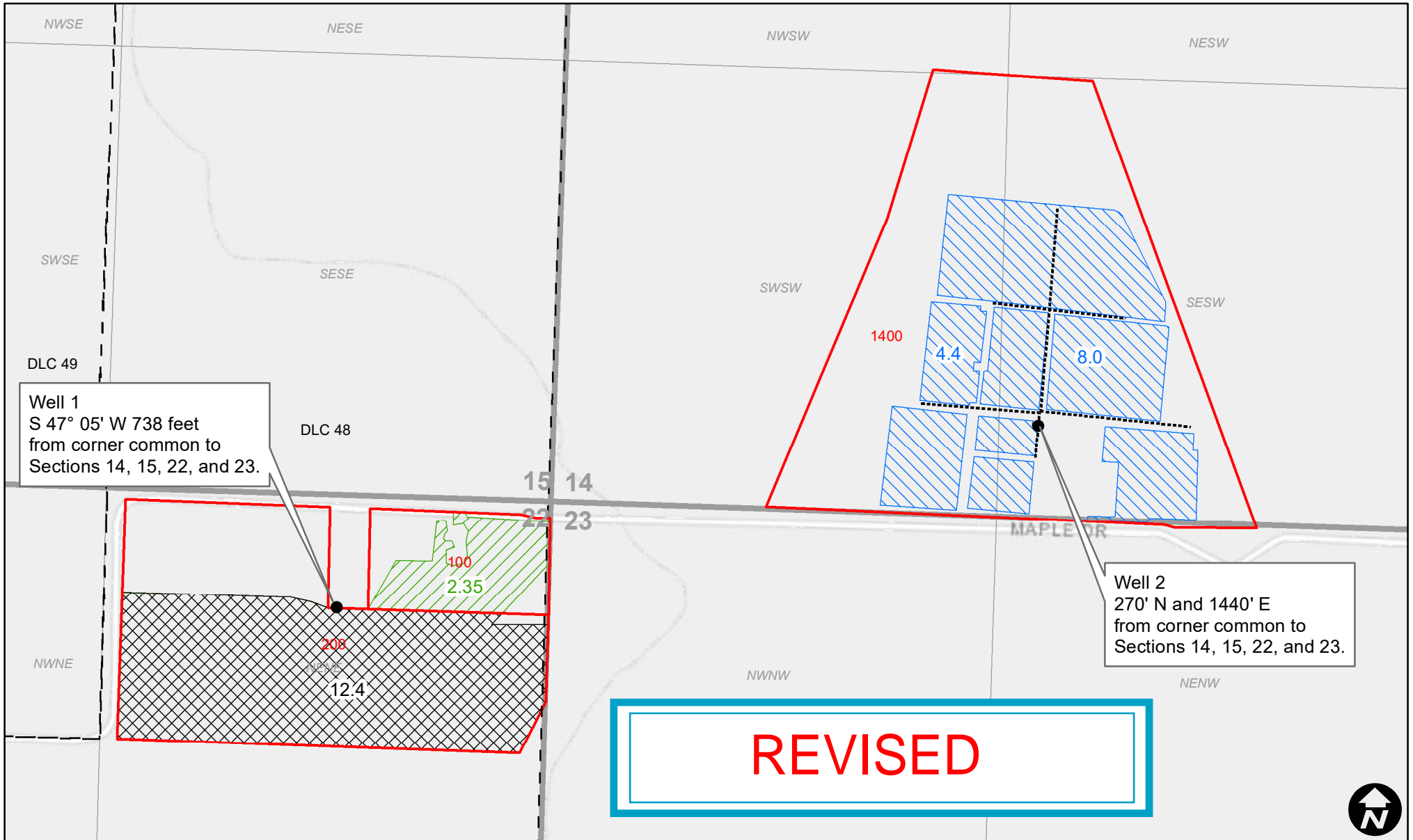


Groundwater Registration Modification  
 Gabriel B. Cox & Sophie C. Bello - GR 4224

**OWRD RECEIVED**  
 courchca, 7/10/2024, 10:28:06 AM

REVISED 7/10/2024

Township 16S, Range 4W



Well 1  
 S 47° 05' W 738 feet  
 from corner common to  
 Sections 14, 15, 22, and 23.

Well 2  
 270' N and 1440' E  
 from corner common to  
 Sections 14, 15, 22, and 23.

**REVISED**

**Legend**

- GR 4224 From
- GR 4224 No Change
- GR 4224 To
- Mainline
- Taxlot
- DLC

0 200 400 800 Feet