





RECEIVED
OVER THE COUNTER

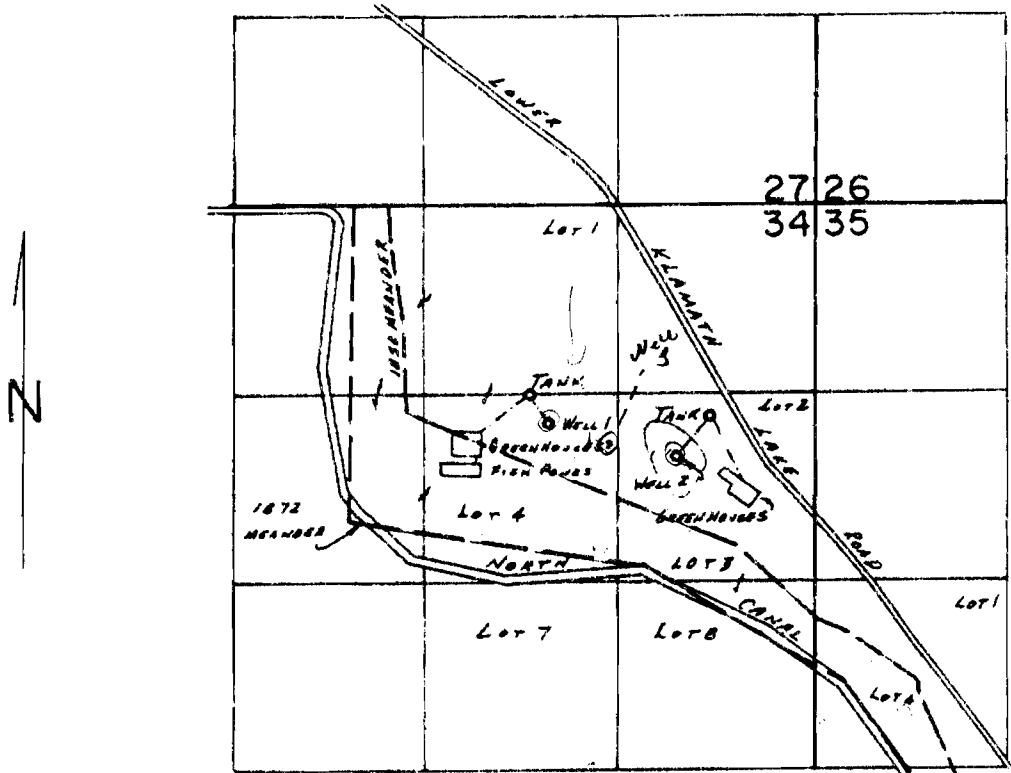
T-10327

RECEIVED

FEB 28 2007

WATER RESOURCES DEPT
SALEM, OREGON

T.40S., R.9E., W.M.



RECEIVED
MAY 24 2001

Wells Loc: #1-1520'S & 1780'N; #2-1760'S & 930'N; BORN FROM NE COR. SEC. 34.

Well #3 1640S 1355'N FROM NE COR. SEC 34

SCALE: 1" = 1320'

FINAL PROOF SURVEY UNDER

Application No. G:9874.. Permit No. G:9547.....
IN NAME OF

LISKEY FARMS, INC.

Surveyed Oct. 4..... 1988., by B.W. BISHOP.....

T-10327

RECEIVED

RECEIVED
OVER THE COUNTER

FEB 28 2007

127109
808
4035-178-3D