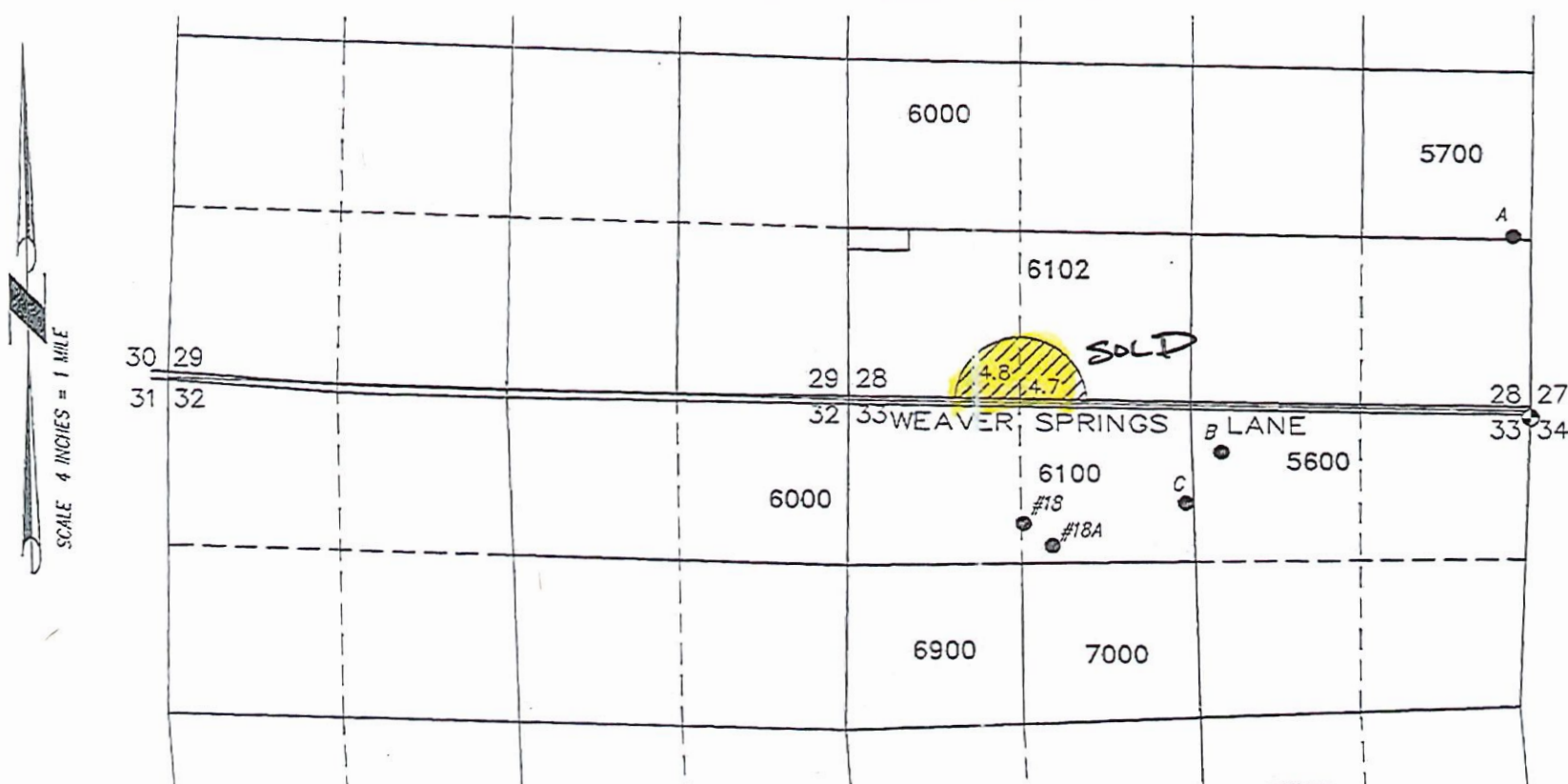
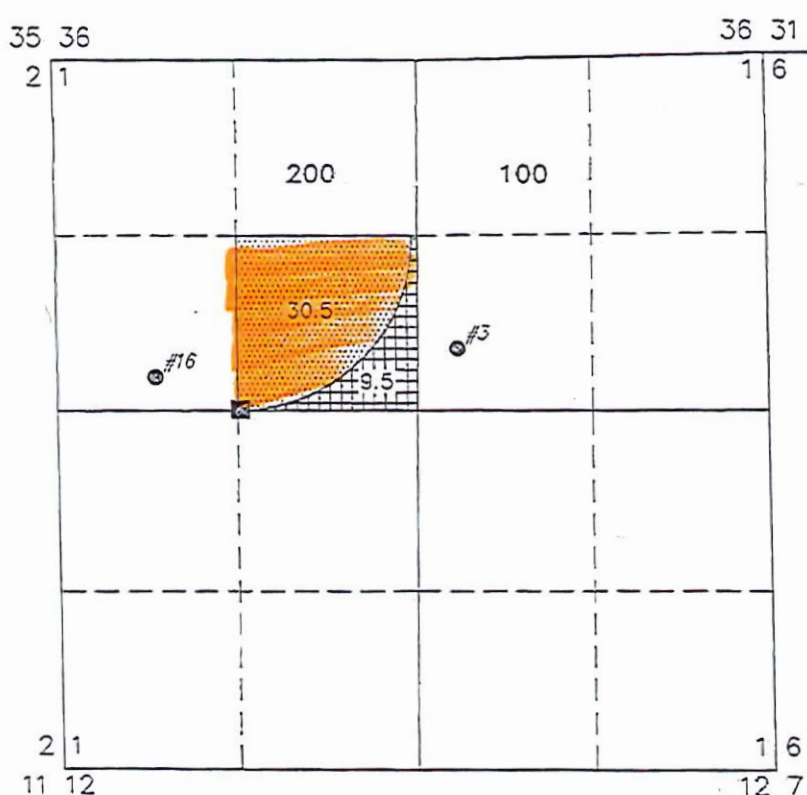


MAP TO ACCOMPANY APPLICATION TO CHANGE PLACE OF USE AND ADD POINTS OF APPROPRIATION FOR CERTIFICATE 62014

SECTIONS 28, 29, & 32, TOWNSHIP 25 SOUTH, RANGE 31 EAST, W.M.
TAX LOTS: 5600, 5700, 6000, 6100, & 6102



SECTION 1, TOWNSHIP 26 SOUTH, RANGE 30 EAST, W.M.
TAX LOTS: 100 & 200



RECEIVED
AUG 15 2025
OWRD

- 9.5 ACRES PRIMARY WATER RIGHTS FROM C 62014 TRANSFERRED "ON", AS SHOWN
- 9.5 ACRES PRIMARY WATER RIGHTS FROM C 62014 TRANSFERRED "OFF", AS SHOWN
- 30.5 ACRES PRIMARY WATER RIGHTS FROM C 62014 REMAIN

RETAINED

SECTION CORNER TIE
LOCATED 2-1/2" ALUM. CAPPED PIPE AT
WITNESS POINT 50' SOUTH ON SECTION LINE
FROM CORNER COMMON TO SECTIONS 27,
28, 33, AND 34.

RECEIVED
MAR 15 2023
OWRD

- POA 3 HARN 50143 (PROPOSED APOA)
LOCATED IN THE SW 1/4 NE 1/4
SECTION 1, T26S R30E, W.M. AND 2160
FEET SOUTH AND 2340 FEET WEST FROM
THE NE CORNER SECTION 1.
- POA 16 HARN 51555 (PROPOSED APOA)
LOCATED IN THE SW 1/4 NW 1/4
SECTION 1, T26S R30E, W.M. AND 250
FEET NORTH AND 730 FEET EAST FROM
THE W 1/4 CORNER SECTION 1.
- POA HARN 1317 (AUTH. BY 62014)
LOCATED IN THE SE 1/4 NW 1/4
SECTION 1, T26S R30E, W.M. AND 10
FEET NORTH AND 1340 FEET EAST
FROM THE W 1/4 CORNER SECTION 1.

- POA A HARN 50312 (PROPOSED APOA)
LOCATED IN THE NE 1/4 SE 1/4
SECTION 28, T25S R31E, W.M. AND 1365
FEET NORTH AND 100 FEET WEST FROM
THE SE CORNER SECTION 28.
- POA B HARN 51781 (PROPOSED APOA)
LOCATED IN THE NW 1/4 NE 1/4
SECTION 33, T25S R31E, W.M. AND 365
FEET SOUTH AND 2405 FEET WEST
FROM THE NE CORNER SECTION 33.
- POA C UNBUILT (PROPOSED APOA)
LOCATED IN THE NE 1/4 NW 1/4
SECTION 33, T25S R31E, W.M. AND 770
FEET SOUTH AND 1865 FEET WEST
FROM THE NE CORNER SECTION 33.

- POA 18 HARN 50777 (AUTH. BY 94472)
LOCATED IN THE NW 1/4 NW 1/4
SECTION 33, T25S R31E, W.M. AND 770
FEET SOUTH AND 1320 FEET EAST FROM
THE NW CORNER SECTION 33.
- POA 18A HARN 50501 (PROPOSED APOA)
LOCATED IN THE NE 1/4 NW 1/4 SECTION
33, T25S R31E, W.M. AND 1120 FEET
SOUTH AND 3695 FEET WEST FROM THE
NE CORNER SECTION 33.

THIS MAP IS FOR THE PURPOSE OF
LOCATING A WATER RIGHT ONLY AND HAS
NO INTENT TO PROVIDE LEGAL DIMENSIONS
OR THE LOCATION OF PROPERTY LINES.

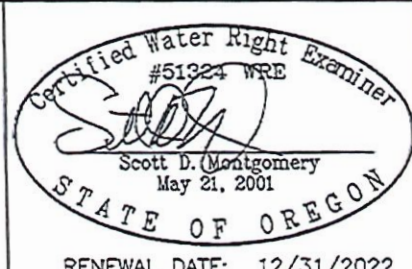
PROJECT No. 22-138

PREPARED AT THE REQUEST OF:
GOLDEN RULE FARMS, INC.
P.O. BOX 255
CHRISTMAS VALLEY, OR 97641

ALL POINTS ENGINEERING
& SURVEYING, INC.



P.O. BOX 767
TERREBONNE, OREGON 97760
(541) 548-5833 PH
Scott@APEandS.com
www.APEandS.com



RENEWAL DATE: 12/31/2022

14191