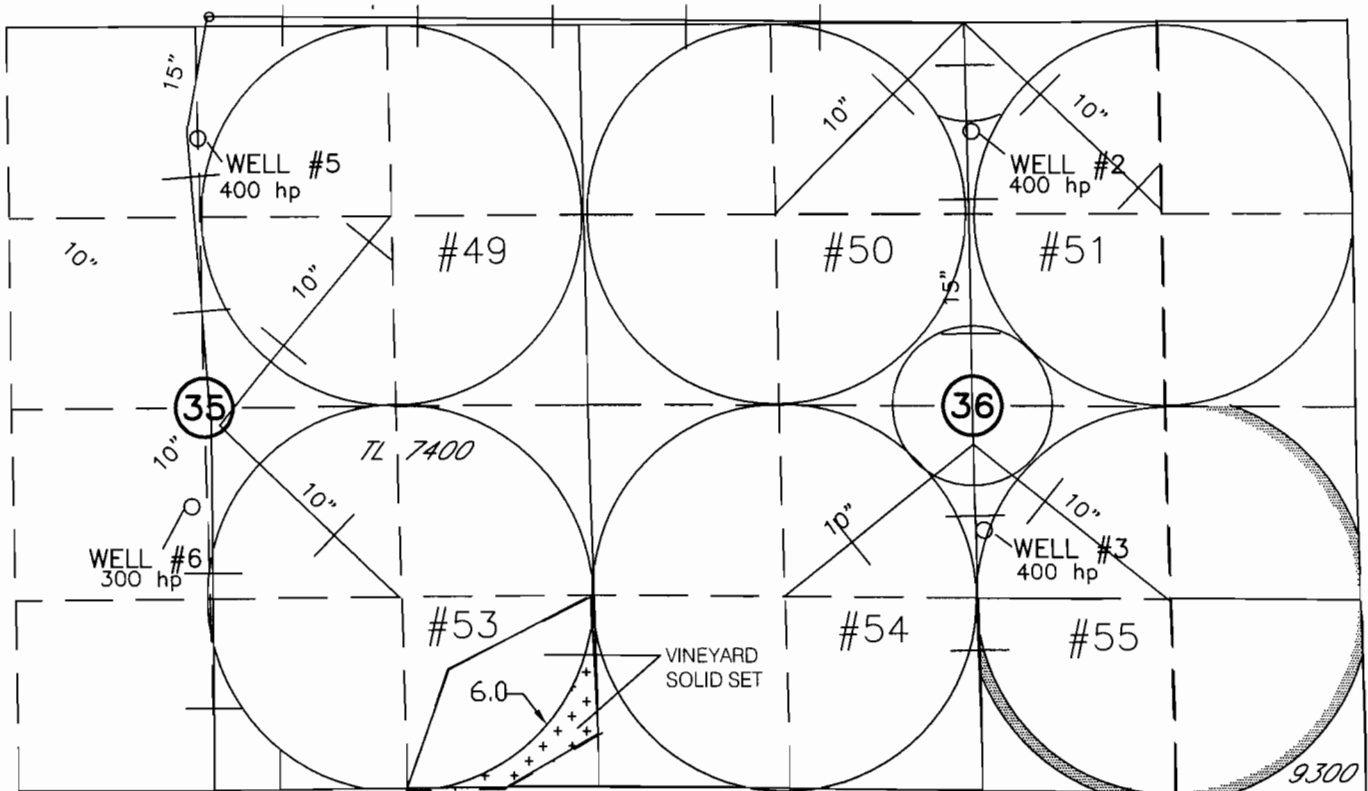


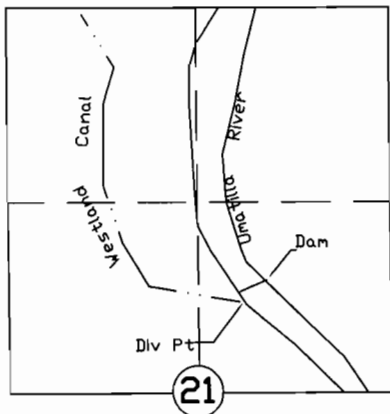
2003 WESTLAND IRRIGATION DISTRICT TRANSFER #9591 FINAL PROOF MAP - PRIOR

April 22, 1955, Cert. 76050 Primary &
March 26, 1974 Cert. 75129 Supplemental.

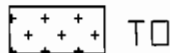
T3N., R28E., W.M.



T3N., R 29E., W.M.



Authorized wells for cert. #75129 are located as follows:
Well 2 - 750' S & 2620' W from NE corner section 36
Well 3 - 1780' N & 2600' W from SE corner section 36
Well 5 - 770' S & 2640' E from NW corner section 35
Well 6 - 1940' N & 2540' E from SW corner section 35



RECEIVED

NOV 07 2005



Authorized P.O.D. Cert. 75050 DIV PT LCT N. 76°45'56"E. 2913.18'
From W.1/4 Cor. Sec. 21

WATER RESOURCES DEPT.
SALEM OREGON

1320 2640



SCALE IN FEET

NOTE: THE PURPOSE OF THIS MAP IS TO IDENTIFY THE APPROXIMATE LOCATION OF THE WATER RIGHT. IT IS NOT INTENDED TO PROVIDE INFORMATION RELATIVE TO THE LOCATION OF PROPERTY OWNERSHIP BOUNDARY LINES.