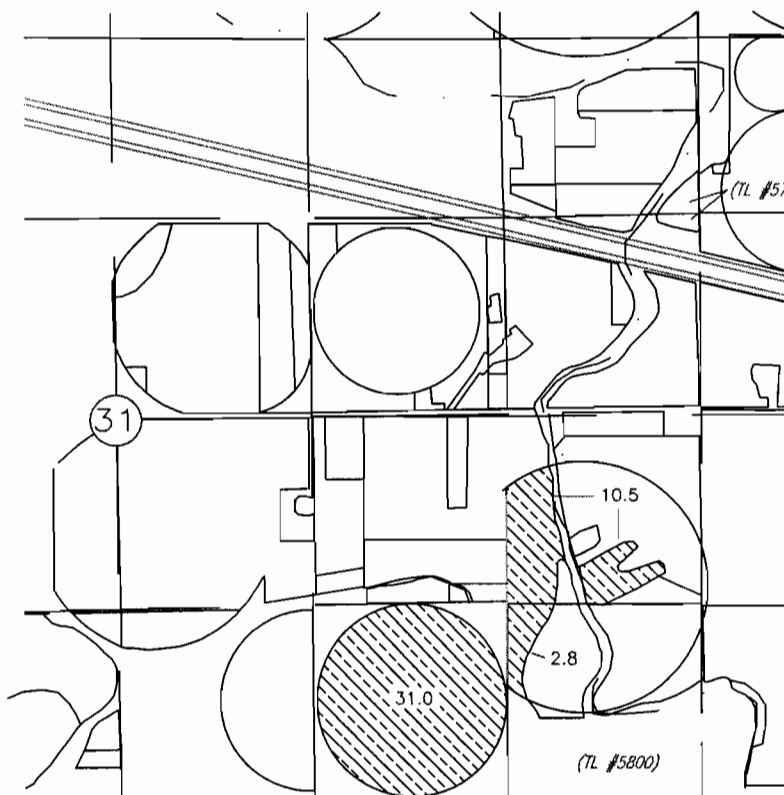


2004 WESTLAND IRRIGATION DISTRICT TRANSFER #9717 FINAL PROOF MAP - BOETTCHER April 12, 1961 Cert. 76799

T4N., R28E., W.M.

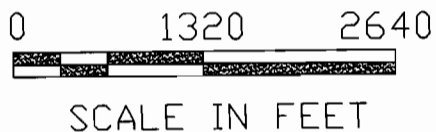
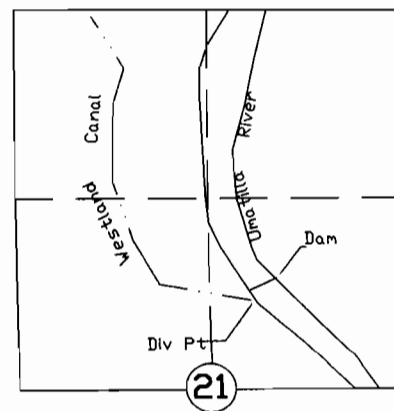


RECEIVED

NOV 07 2005

WATER RESOURCES DEPT.
SALEM, OREGON

T3N., R 29E., W.M.



NOTE: THE PURPOSE OF THIS MAP IS TO IDENTIFY THE APPROXIMATE LOCATION OF THE WATER RIGHT. IT IS NOT INTENDED TO PROVIDE INFORMATION RELATIVE TO THE LOCATION OF PROPERTY OWNERSHIP BOUNDARY LINES.