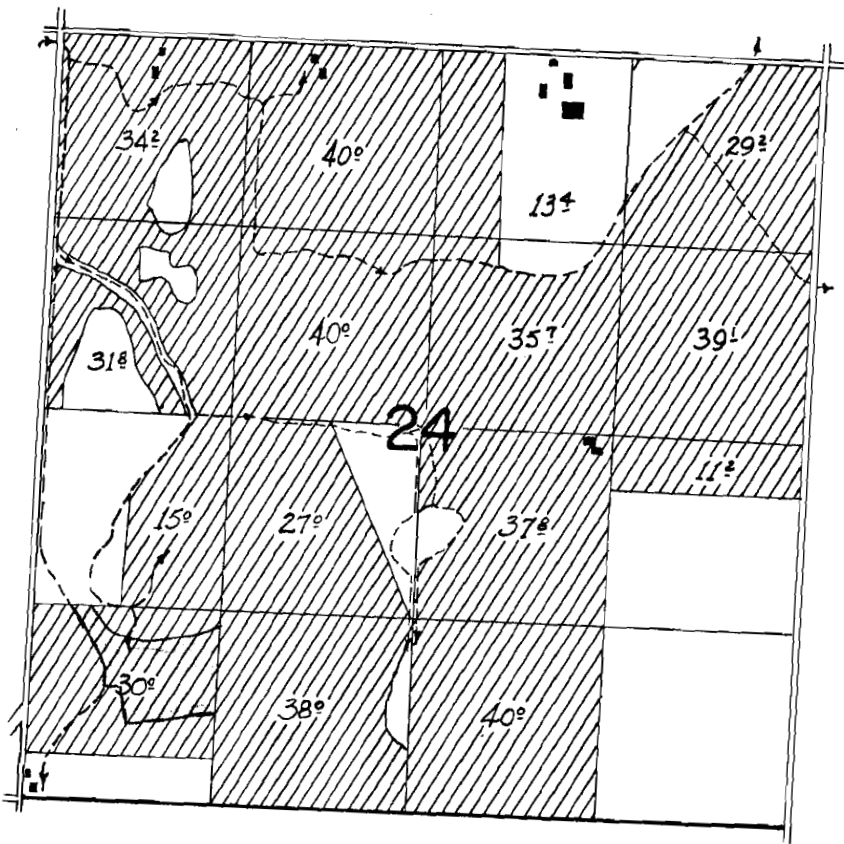


T-5833

T 39 S, R 19 E, W.M.



Transfer 10[±] Acres out to
S¹/₂, S¹/₂, SW¹/₄, SW¹/₄ Sec 24

Transfer in 10 Acres

RECEIVED
JUL 23 1986
WATER RESOURCES DEPT
SALEM, OREGON

T-5133

RECEIVED

JUL 23 1986

WATER RESOURCES DEPT
DALLAM, OREGON

T39S, R19E, W.M.

