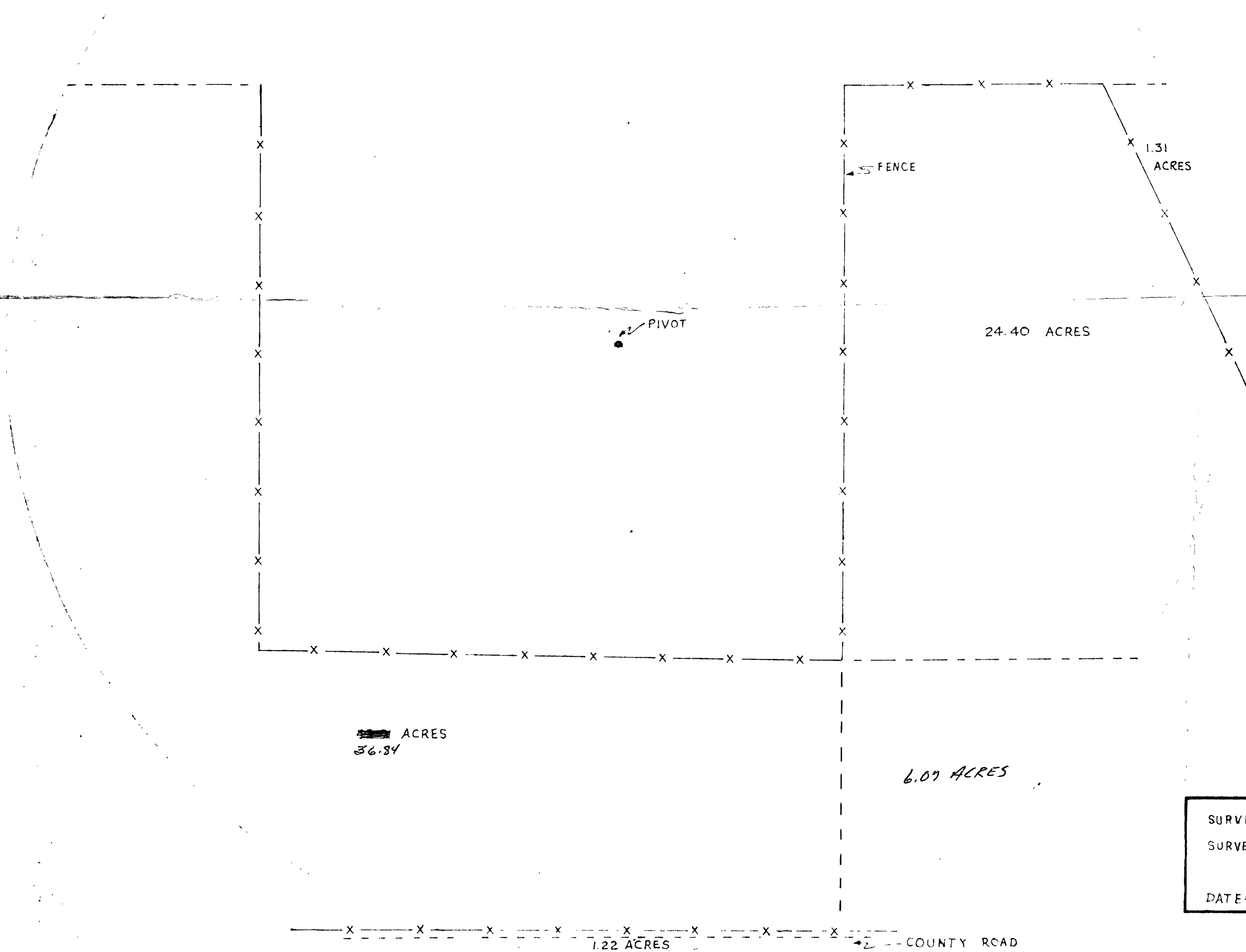


75.99 ACRES

T 39 S R 19 E , SEC. 33



FENCE

PIVOT

1.31 ACRES

24.40 ACRES

36.34 ACRES

6.07 ACRES

1.22 ACRES

COUNTY ROAD

REGISTERED PROFESSIONAL LAND SURVEYOR

DATE: FEBRUARY 1981

SCALE 1" = 200'

SURVEYED FOR: WEIN GROTHE  
 SURVEYED BY: SUNDET ASSOCIATES  
 27 SO. L. ST.  
 LAKEVIEW, OREGON  
 DATE: MARCH, 1980

**RECEIVED**  
 FEB 11 1981  
 WATER RESOURCES DEPT  
 SALEM, OREGON

DRAWING NO. 137

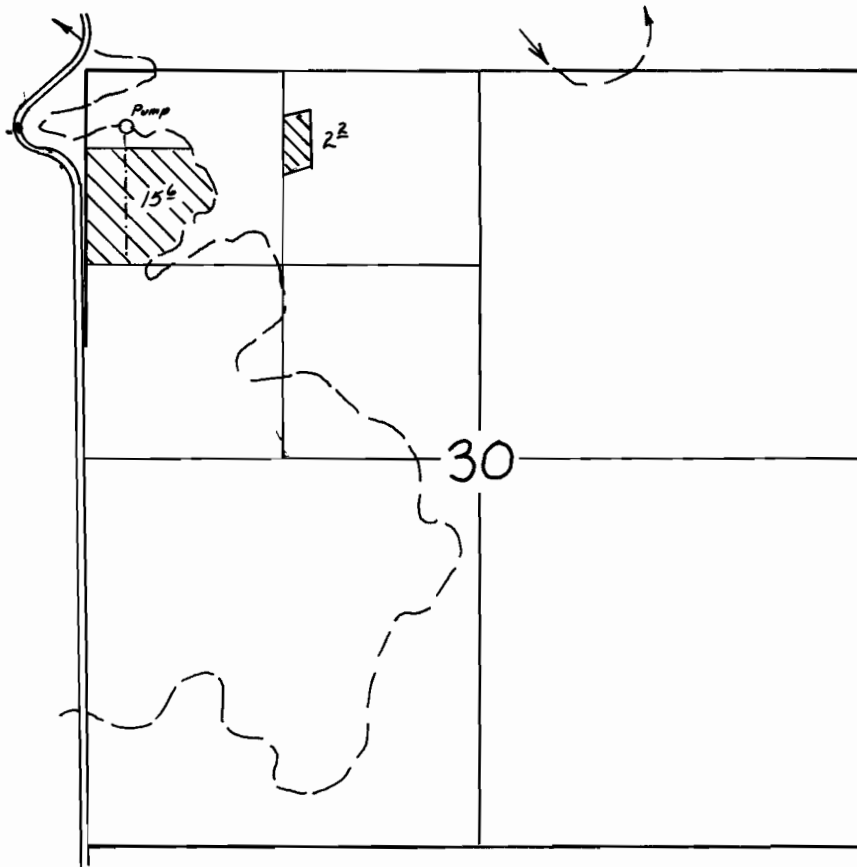
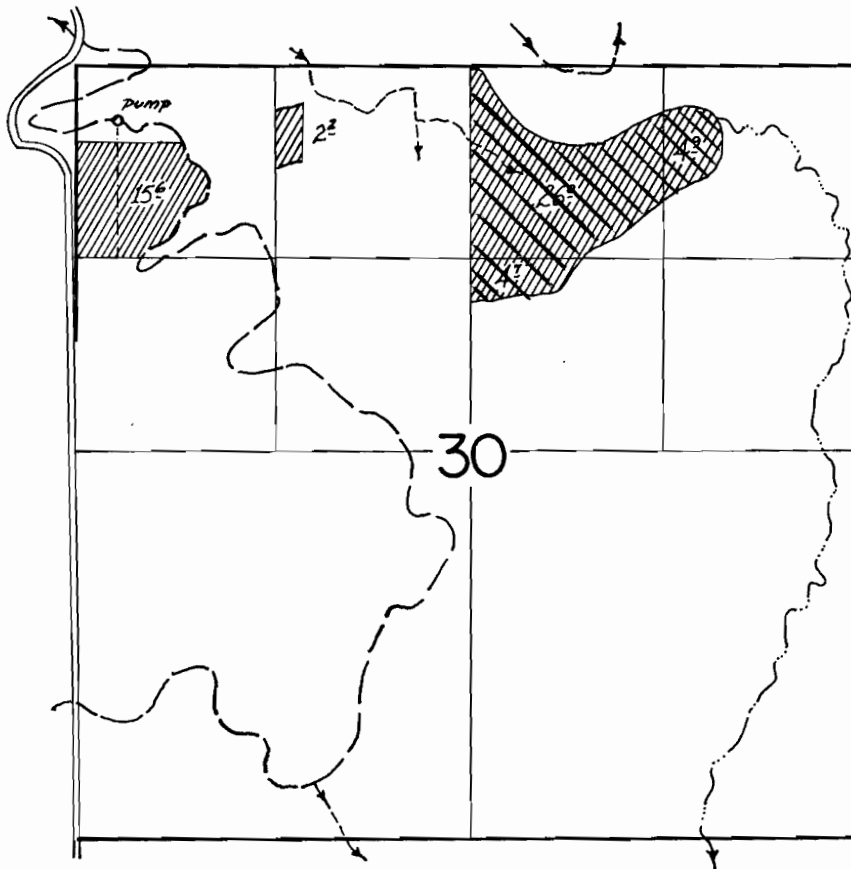
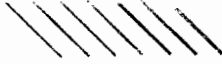


FIG. 3

T-4696

T 39 S, R 19 E, W.M.



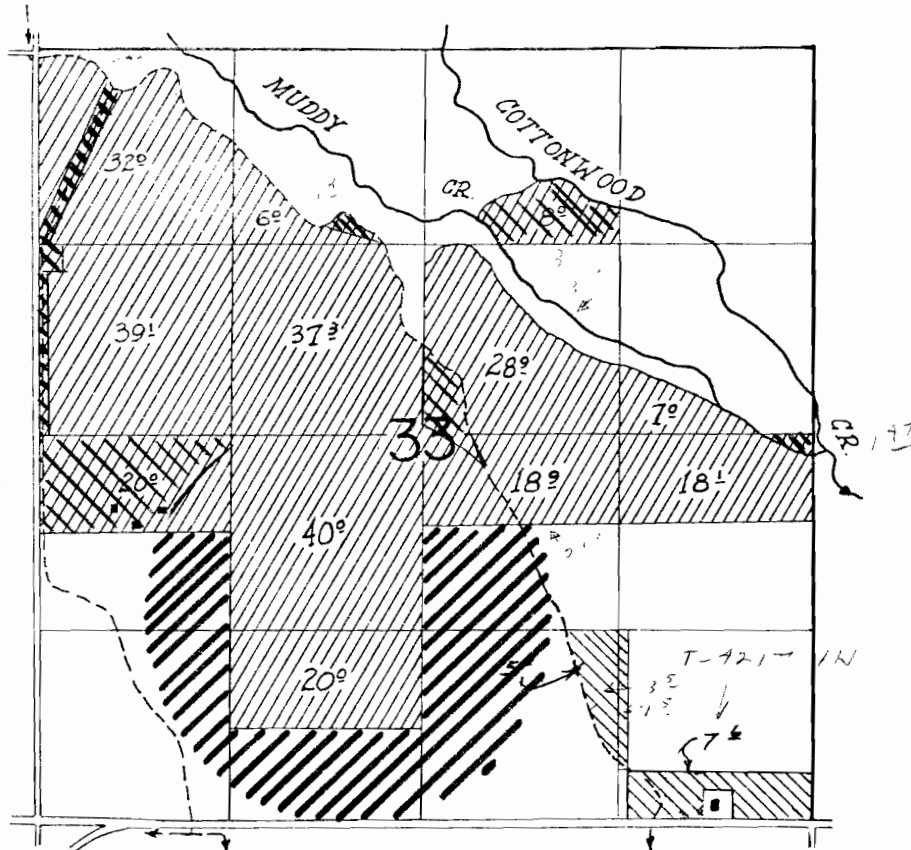
 Transfer from  
30

Transfer to 15c and R 19

RECEIVED  
FEB 11 1981  
WATER RESOURCES DEPT  
SALEM, OREGON

T-469b

T 39 S, R 19 E, W.M.



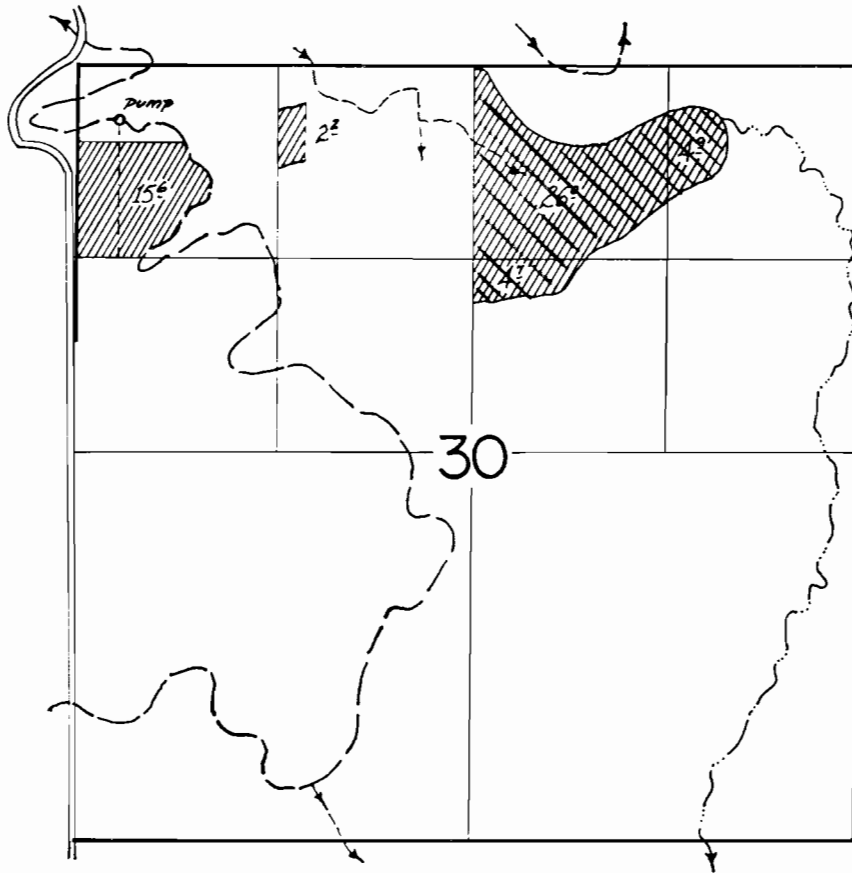
////// - Transferred to from  
-40-19-18-

////// Transfer to  
////// Transfer from

RECEIVED  
FEB 27 1971  
WATER RESOURCES DEPT  
SALEM, OREGON

T-4696

T 39 S, R 19 E, W.M.



WA STATE DEPT  
MINE & GEOLOGY