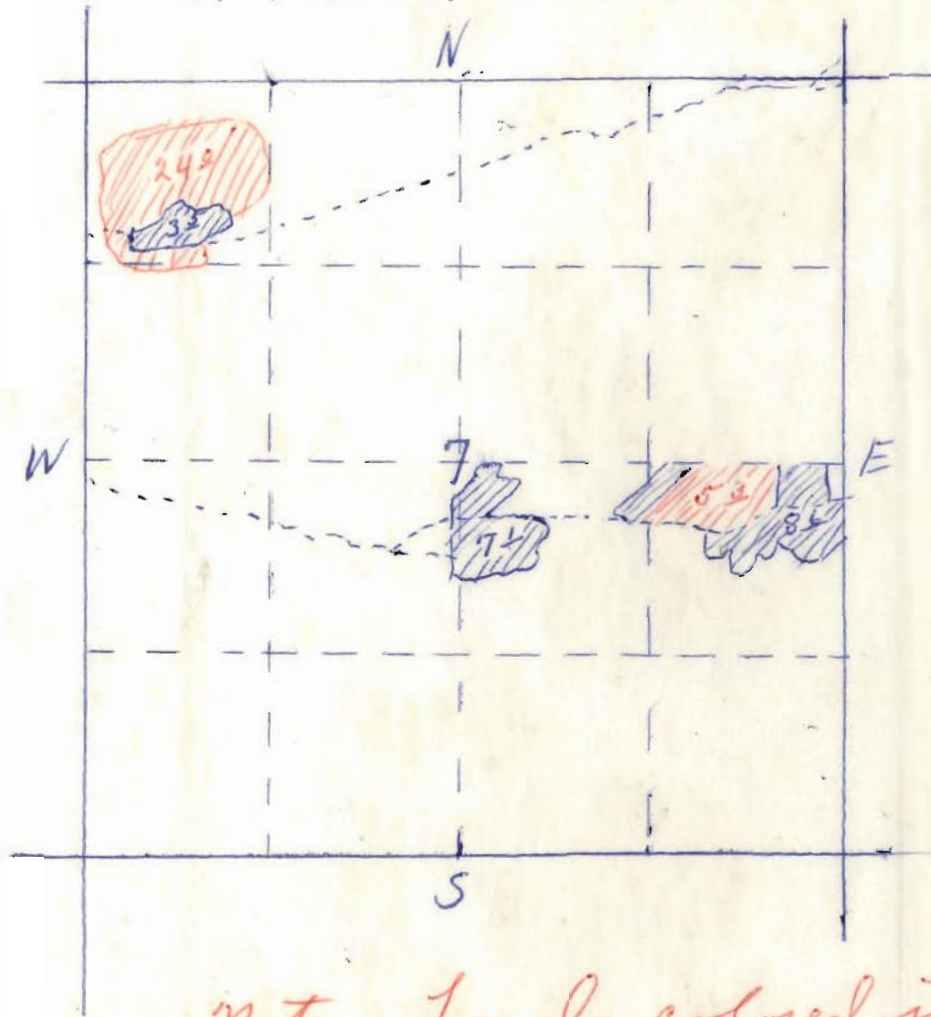


RECEIVED  
JUL - 2 1962  
STATE ENGINEER  
SALEM, OREGON

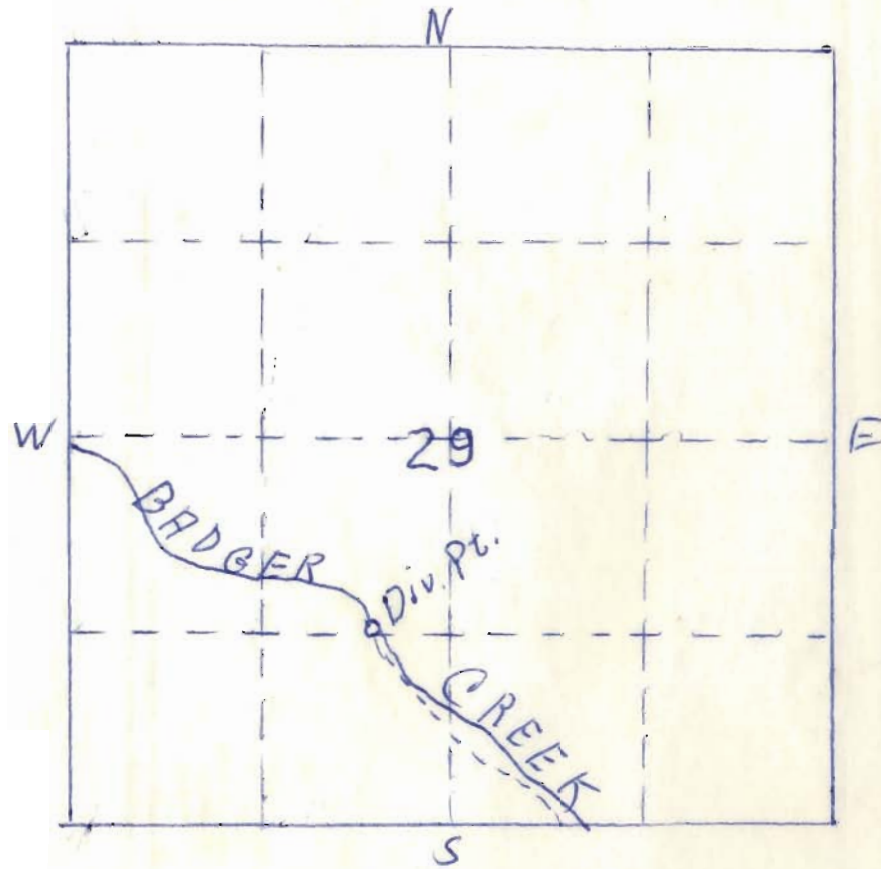
T. 4S. R. 12E. Sec. 7



RECEIVED  
DEC 27 1960  
STATE ENGINEER  
SALEM, OREGON

Note - Lands colored in red are  
the new place of use

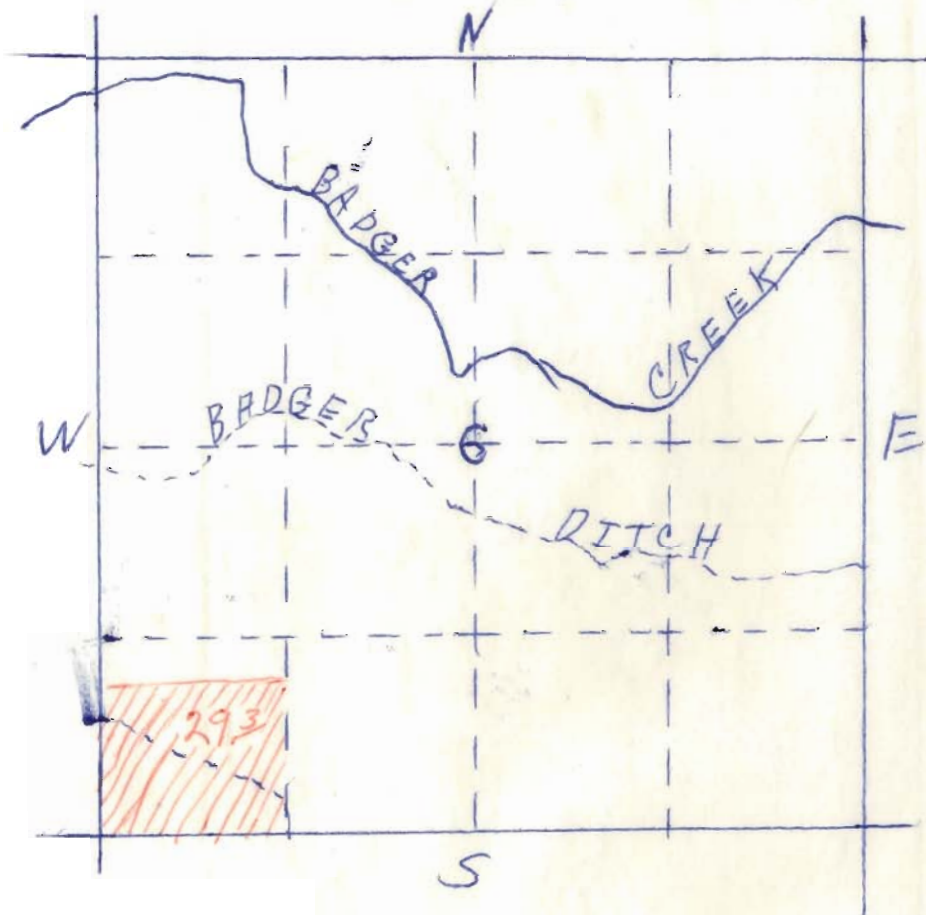
T. 35. R. 11E. Sec. 29



RECEIVED  
DEC 26 1960  
STATE ENGINEER  
SALEM, OREGON

Note - Showing Point of Diversion

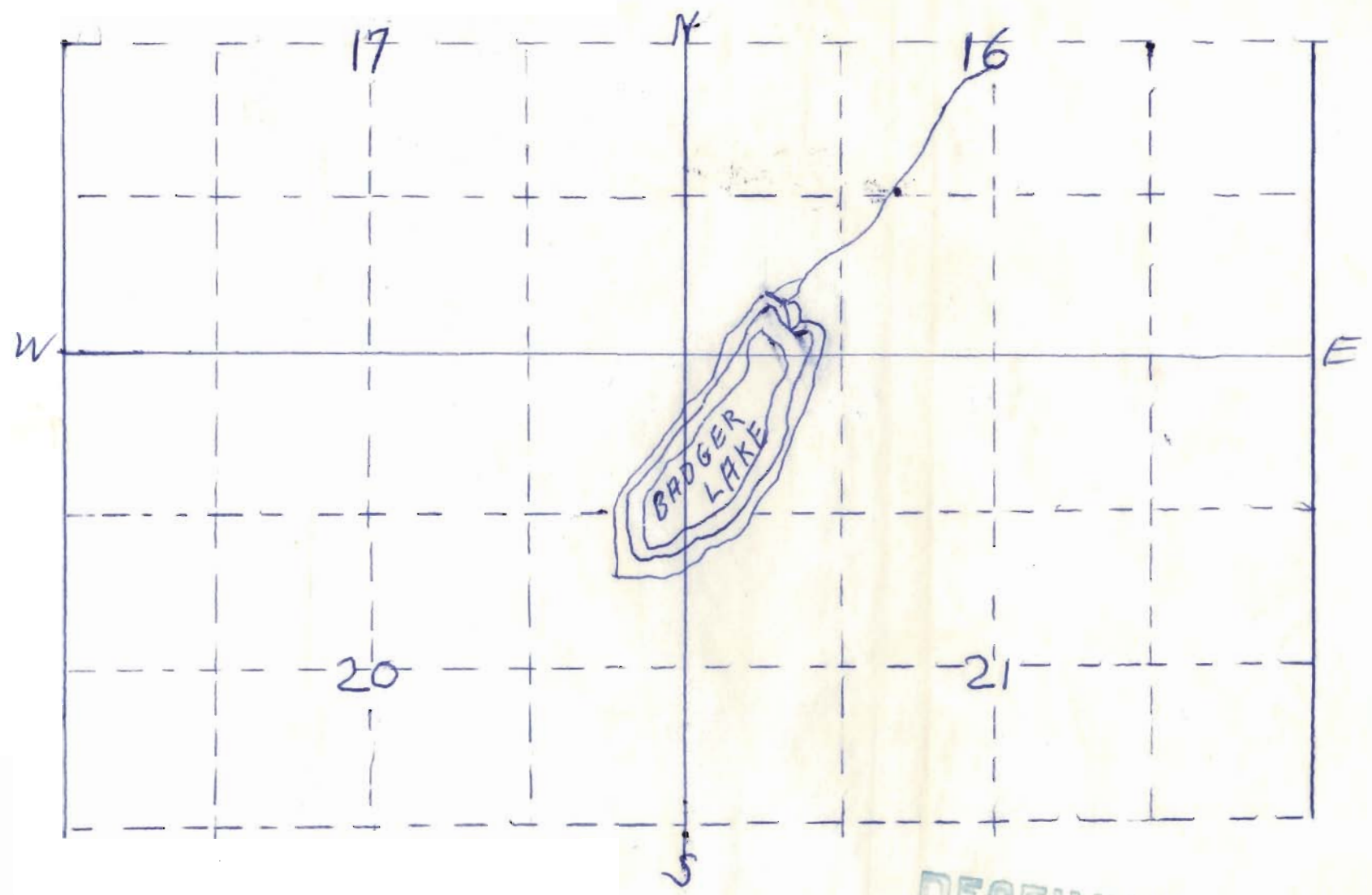
T. 4S. R. 13E. Sec. 6



RECEIVED  
DEC 27 1960  
STATE ENGINEER  
SALEM, OREGON

Note - land colored in red is the  
place of use under the present  
water right

T. 35. R. 10 E.



RECEIVED  
DEC 26 1960  
STATE ENGINEER  
SALEM, OREGON