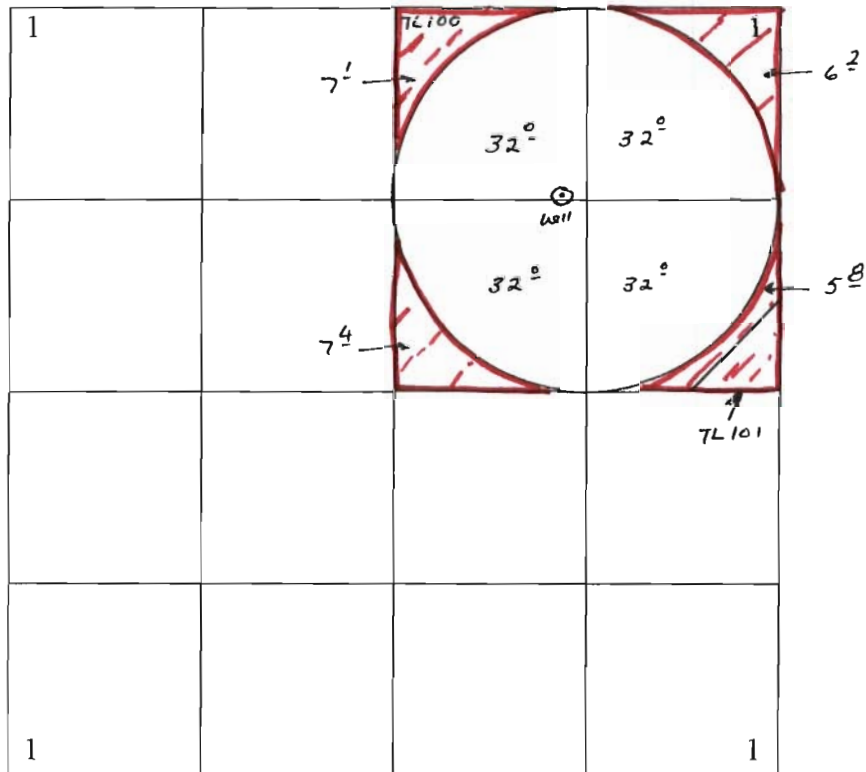


**T 27 S, R 17 E,  
SECTION 1  
TAX LOTS 100, 101**


**“FROM MAP”**

*Handwritten scribbles on the left margin.*



**EL-Pa Well No. 1 located in the NW 1/4 NE 1/4, Section 1  
T 27 S, R 17 E., WM; 1300' South and 1480' West  
from the NE Corner, Section 1.**

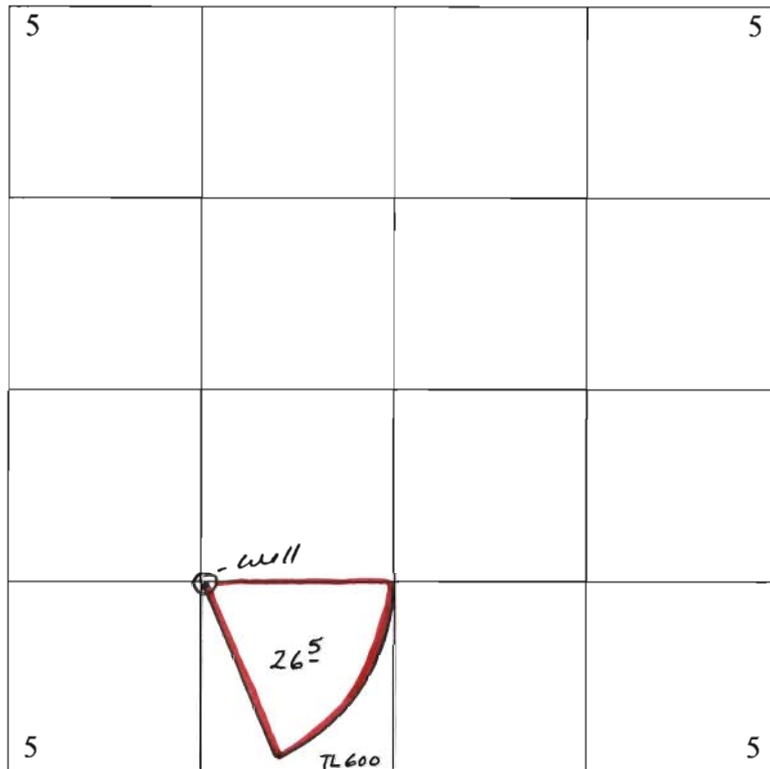
**SCALE - 1" = 1320'**

 - To be Temp Transferred.

**RECEIVED**  
FEB 22 2008  
WATER RESOURCES DEPT  
SALEM, OREGON

**T 27 S, R 18 E,  
SECTION 5  
TAX LOT 600**

**“TO MAP”**



**Well to be located in the SE $\frac{1}{4}$  SW $\frac{1}{4}$ , Section 5  
T 28 S, R 17 E., WM; 1300' North and 1340' East  
from the SW Corner, Section 5.**

**SCALE - 1" = 1320'**

**RECEIVED**

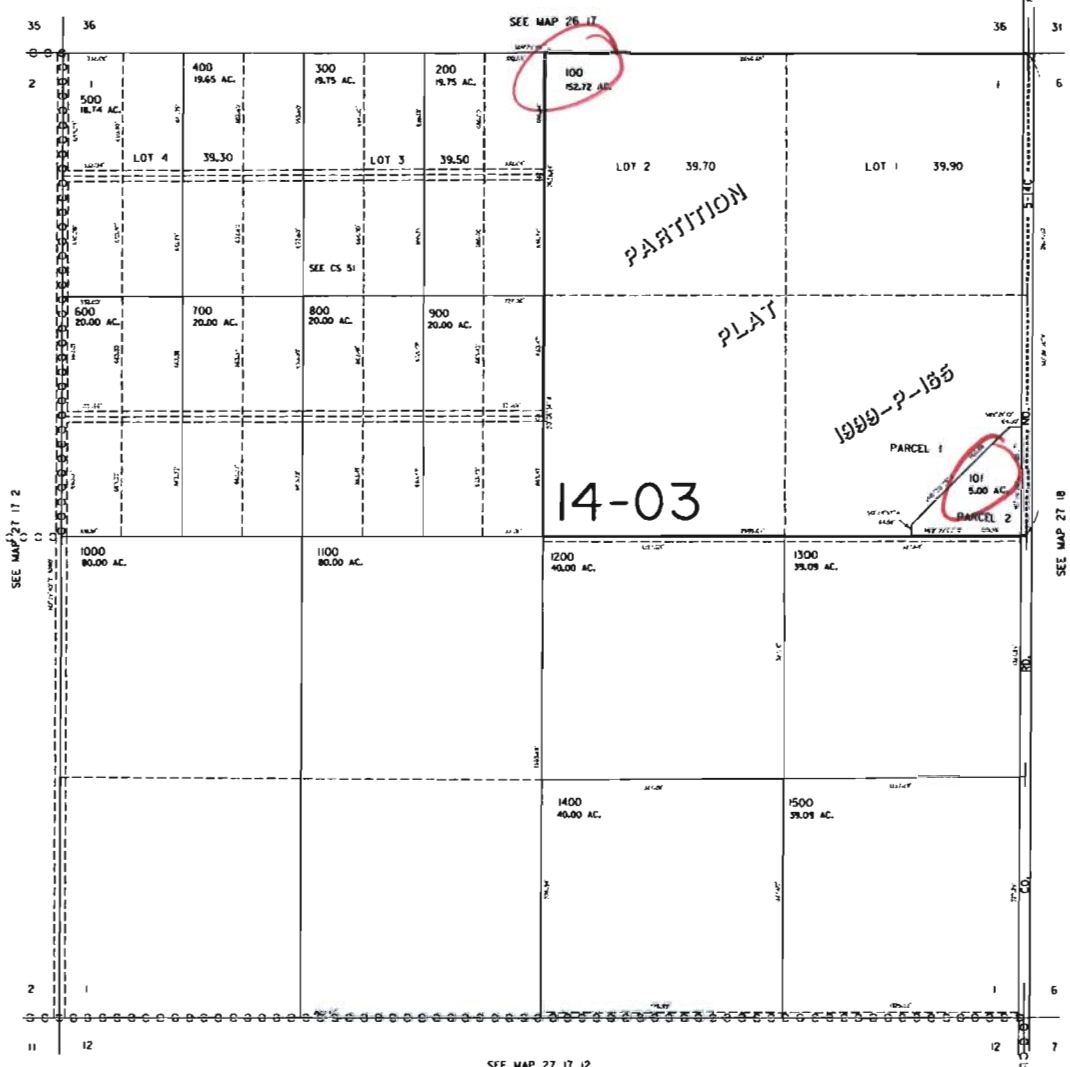
**FEB 22 2008**

**WATER RESOURCES DEPT  
SALEM, OREGON**

THIS MAP WAS PREPARED FOR  
ASSESSMENT PURPOSE ONLY

SECTION 1 T.27S. R.17E. W.M.  
LAKE COUNTY  
1" = 200'

27 17 1  
CHRISTMAS VALLEY



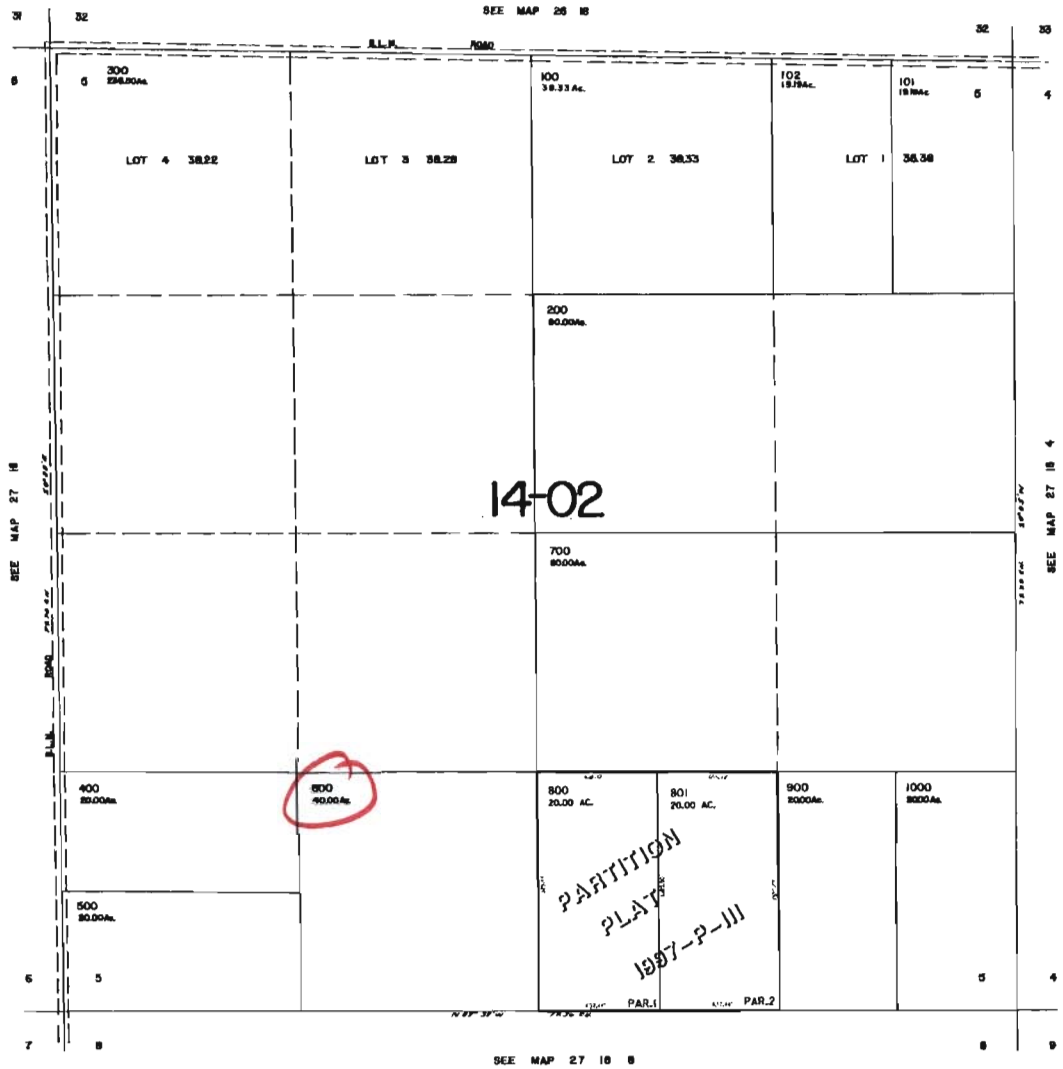
27 17 1  
CHRISTMAS VALLEY

Revised 3/14/00, JD

**RECEIVED**  
FEB 22 2008  
WATER RESOURCES DEPT  
SALEM, OREGON

SECTION 5 T.27S. R18E. W.M.  
LAKE COUNTY  
1" = 400'

THIS MAP WAS PREPARED FOR  
ASSESSMENT PURPOSE ONLY



**RECEIVED**  
FEB 22 2008  
WATER RESOURCES DEPT  
SALEM, OREGON