

Temporary Transfer Maps

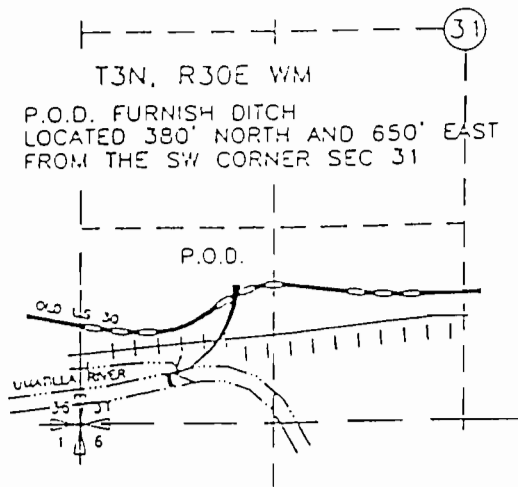
Map Source:

SID 3111

Color Code:

From Acres: ~~Blue~~ Pink 79442 (1905 Priority w/ 79440)
From Acres: Green 76113 (1965 Priority w/ 79440)

To Acres: Yellow 79442 (1905 Priority w/79440)
To Acres: ~~Blue~~ 76113 (1965 Priority w/79440)



RECEIVED
FEB 28 2008
WATER RESOURCES DEP
SALEM OREG

Temporary Transfer Maps

Map Source:

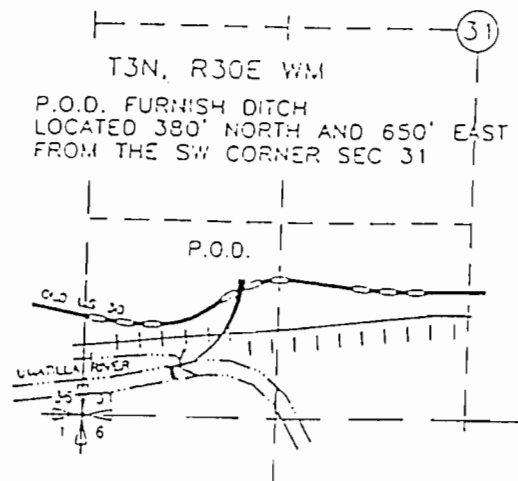
SID 3111

Color Codes:

FROM Acres: Pink 79442 (1905 Priority w/79440)

TO Acres: Yellow 79442 (1905 Priority w/79440)

POD Map:

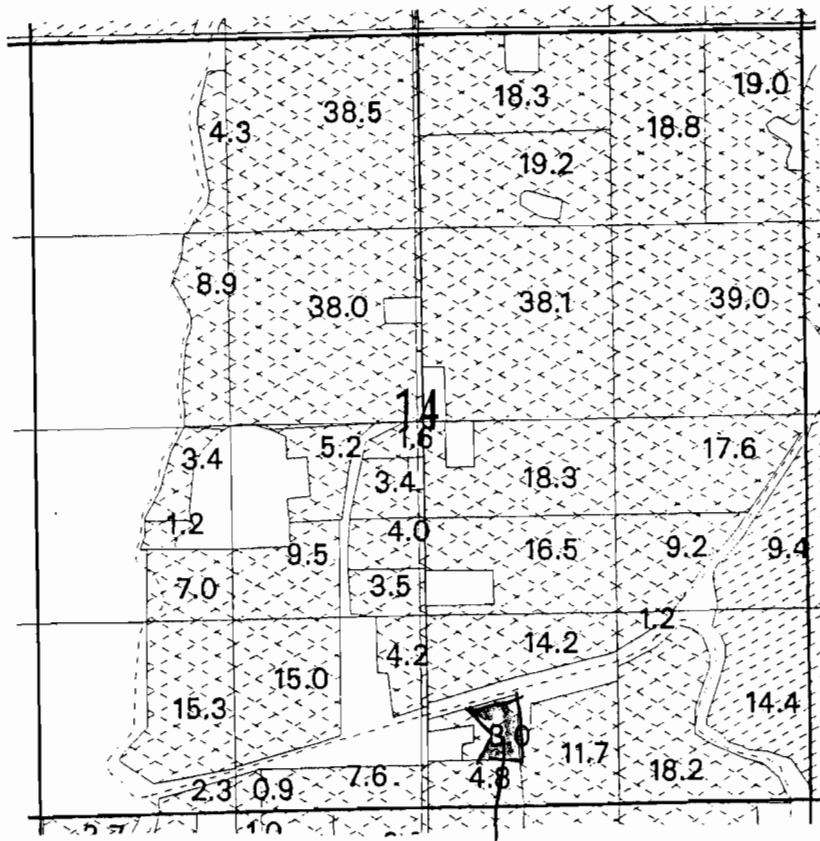


RECEIVED

FEB 28 2008

WATER RESOURCES DEPT
SALEM, OREGON

T. 4 N., R. 29 E., W.M.
Section 14

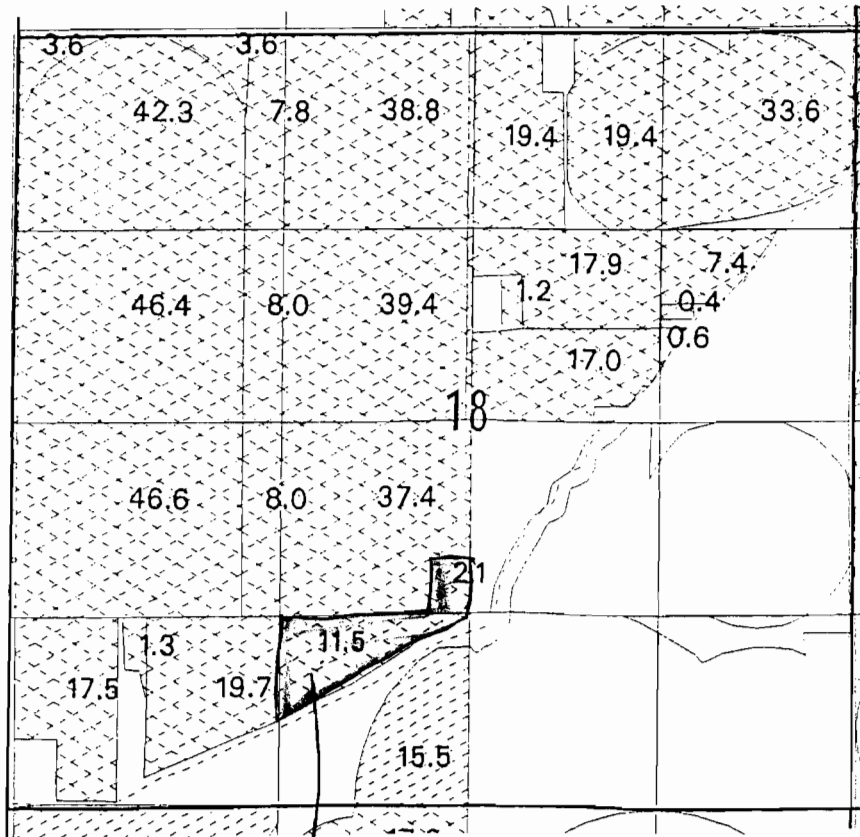


20 acres

Scale 1 in = 1320
"FROM LANDS"

RECEIVED
FEB 28 2008
WATER RESOURCES DEPT
SALEM, OREGON

T. 4 N., R. 29 E., W. M.
Section 18

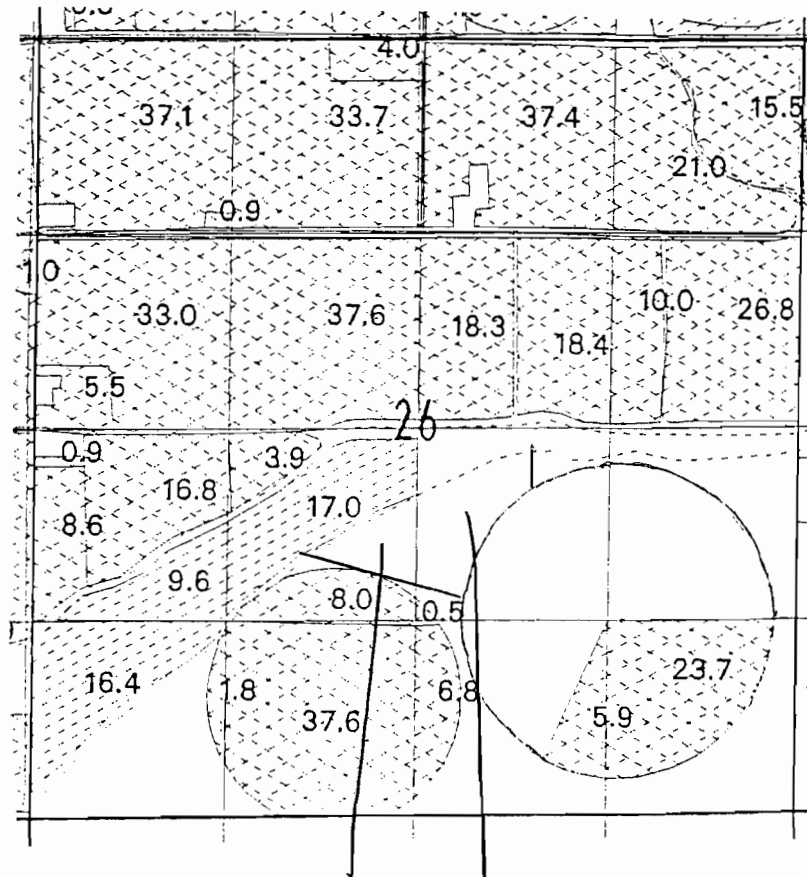


13.6 total acres

Scale 1 in = 1320
"FROM LANDS"

RECEIVED
FEB 28 2008
WATER RESOURCES DEPT
SALEM, OREGON

T. 4 N., R. 29 E., W.M.
SECTION 26



4.25 acres 11.35 acres

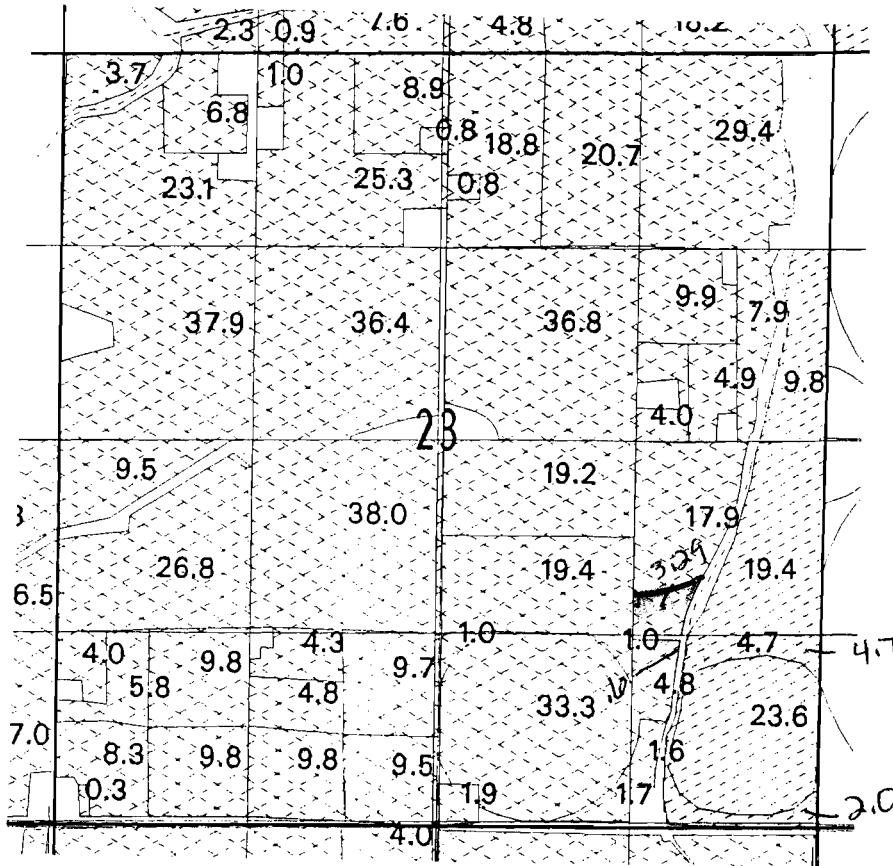
Scale 1 in. = 1320
"TO LANDS"

RECEIVED

FEB 28 2008

WATER RESOURCES DEPT
SALEM, OREGON

T. 4 N., R. 29 E., W.M.
Section 23



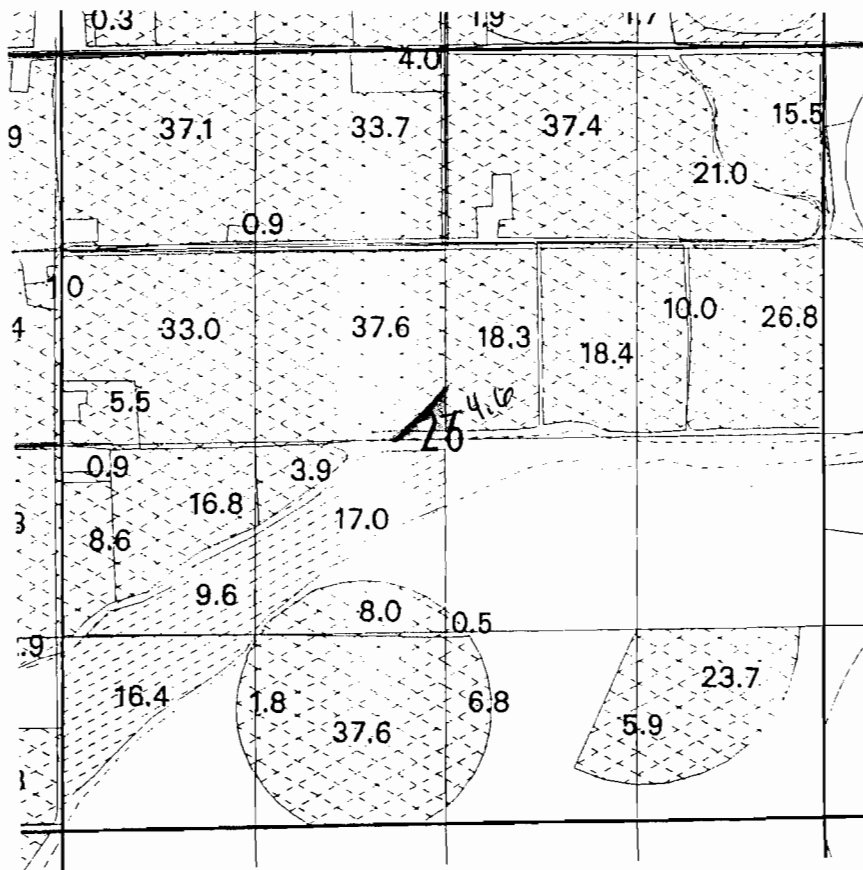
“FROM” LANDS

Scale: 1" = 1320'

RECEIVED

CFR 28 2008
WATER RESOURCES DEPT
SALEM, OREGON

T. 4 N., R. 29 E., W.M.
Section 24



“FROM” LANDS

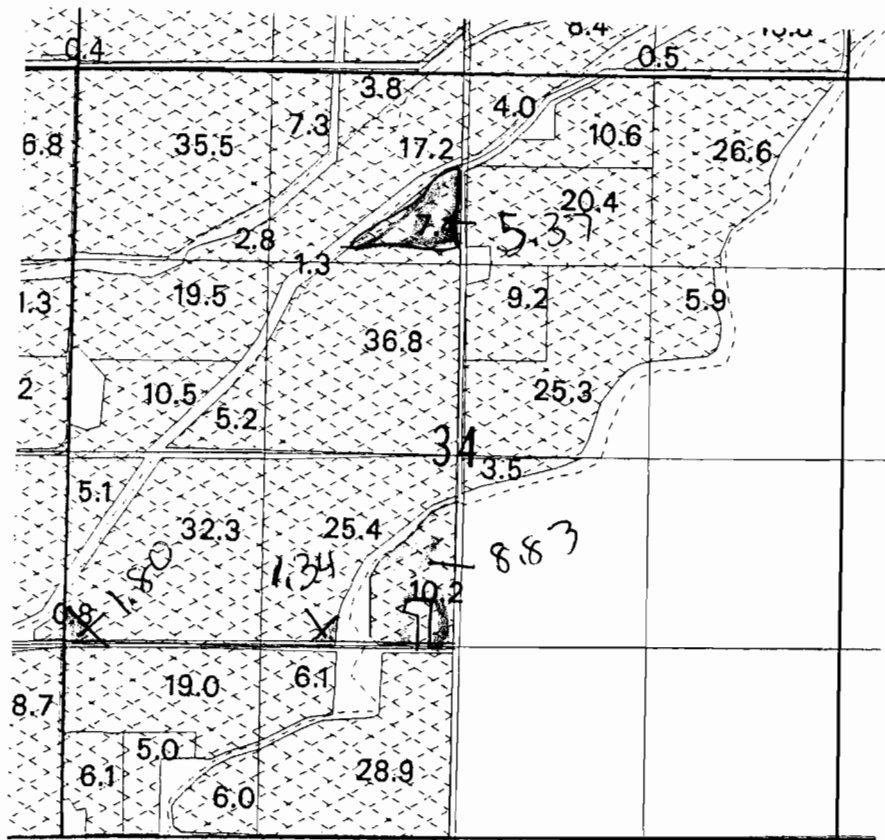
1" = 1320'

RECEIVED

FEB 28 2008

WATER RESOURCES DEPT
SALEM, OREGON

T. 4 N., R. 29 E., W.M.
Section 34



“FROM” LANDS

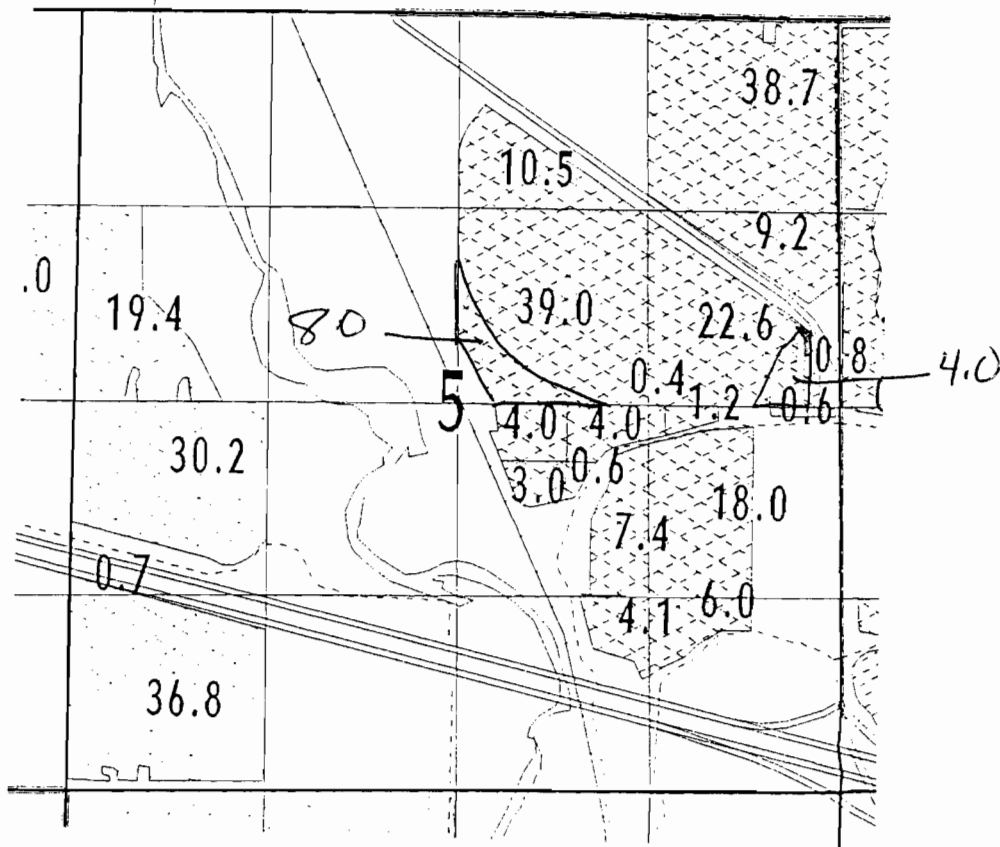
1" = 1320'

RECEIVED

FEB 28 2008

WATER RESOURCES DEPT
SALEM, OREGON

T. 3 N., R. 29 E., W.M.
Section 05



“FROM” LANDS

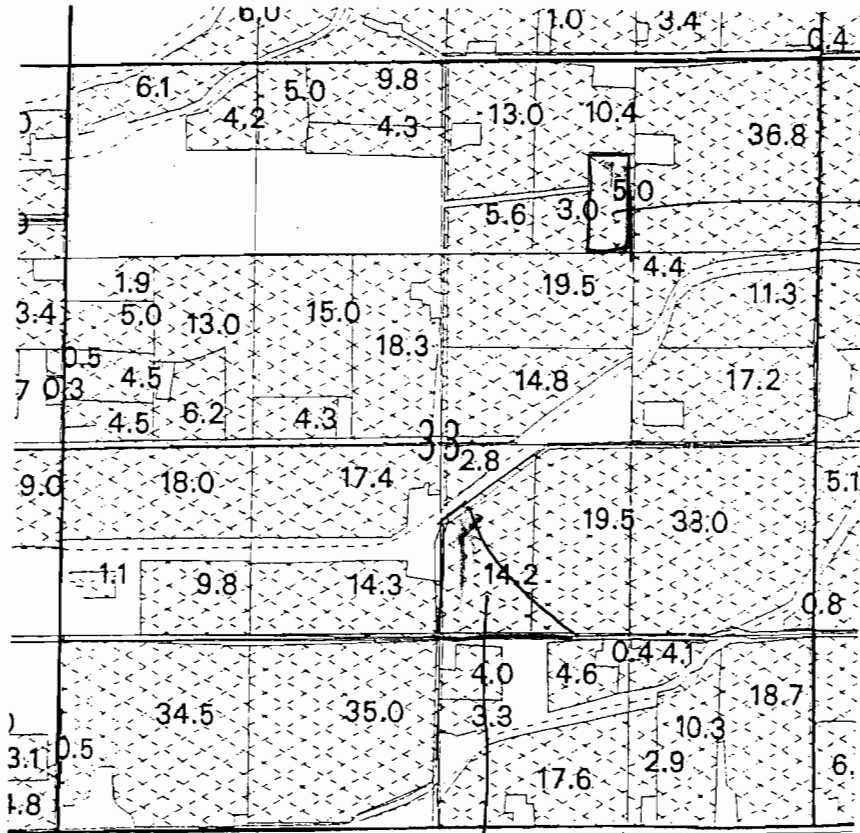
1" = 1320'

RECEIVED

FEB 28 2008

WATER RESOURCES DEPT
SALEM, OREGON

T. 4 N., R. 29 E., W.M.
 Section 33



50
 ↑

“FROM” LANDS

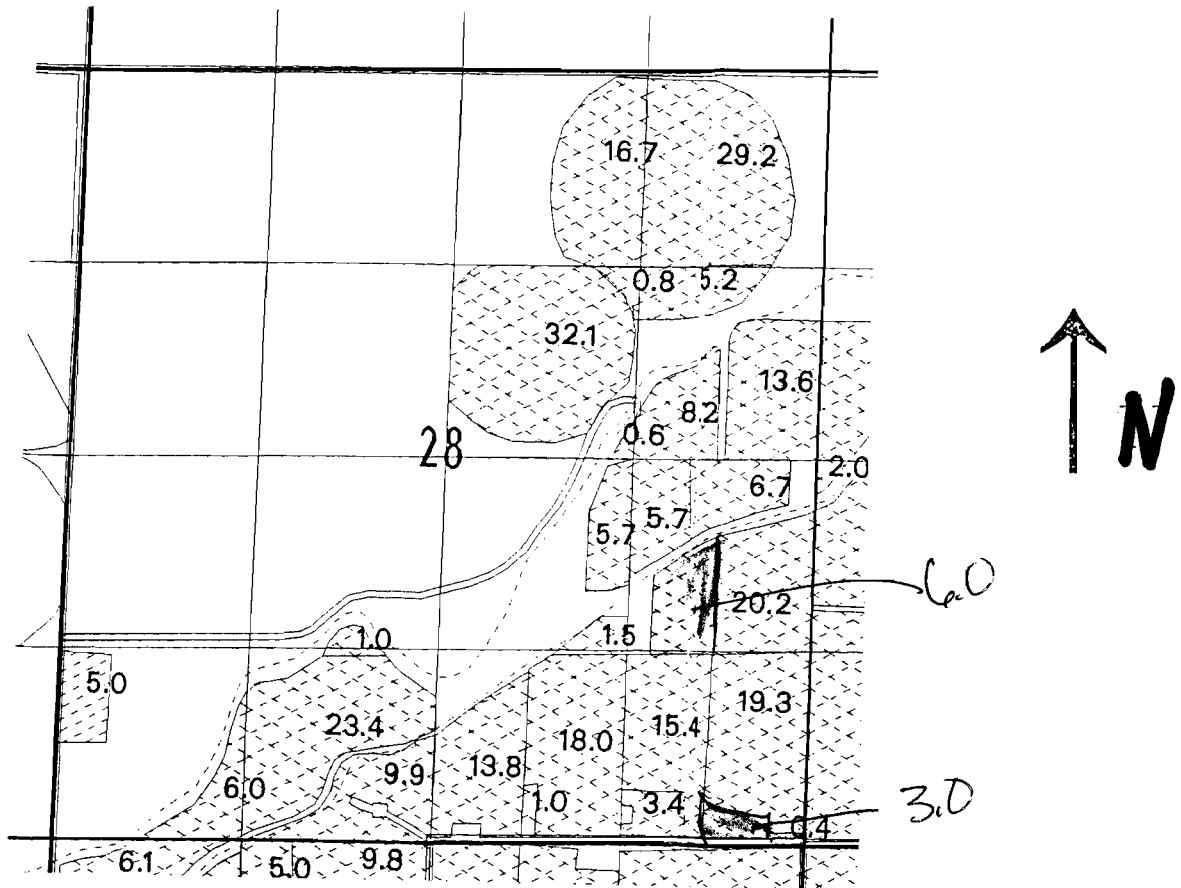
1" = 1320'

RECEIVED

FEB 28 2008

WATER RESOURCES DEPT
 SALEM, OREGON

T. 4 N., R. 29 E., W.M.
Section 28



“FROM” LANDS

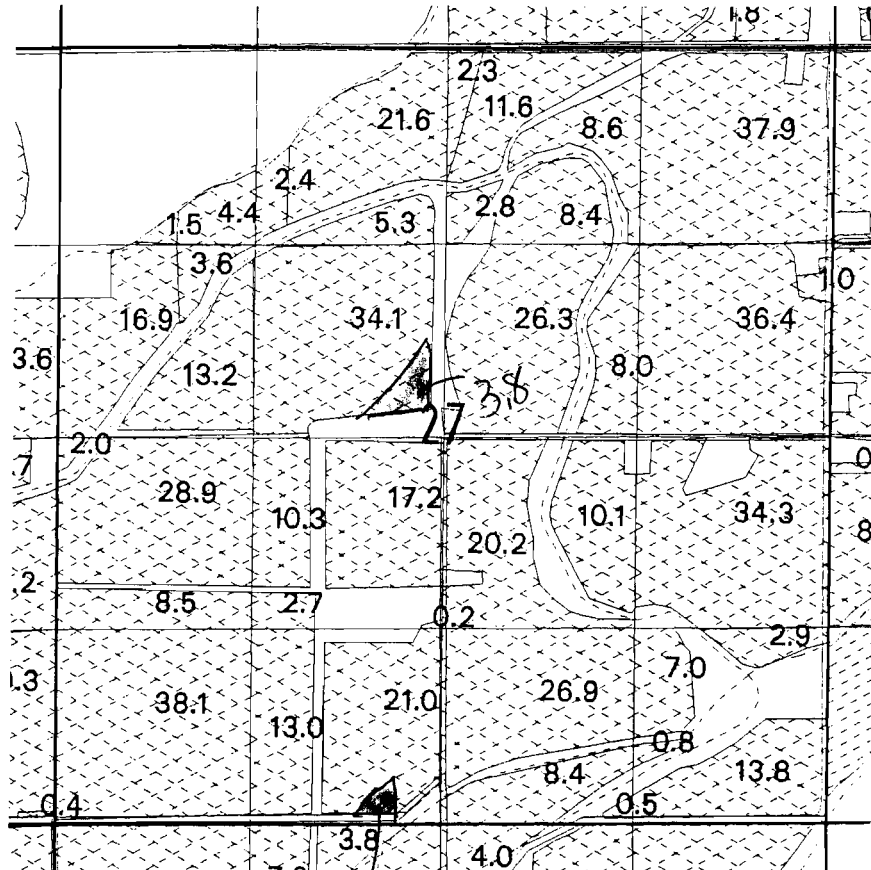
1" = 1320'

RECEIVED

CFR 28 2008

WATER RESOURCES DEPT
SALEM OREGON

T. 4 N., R. 29 E., W.M.
Section 27



“FROM” LANDS

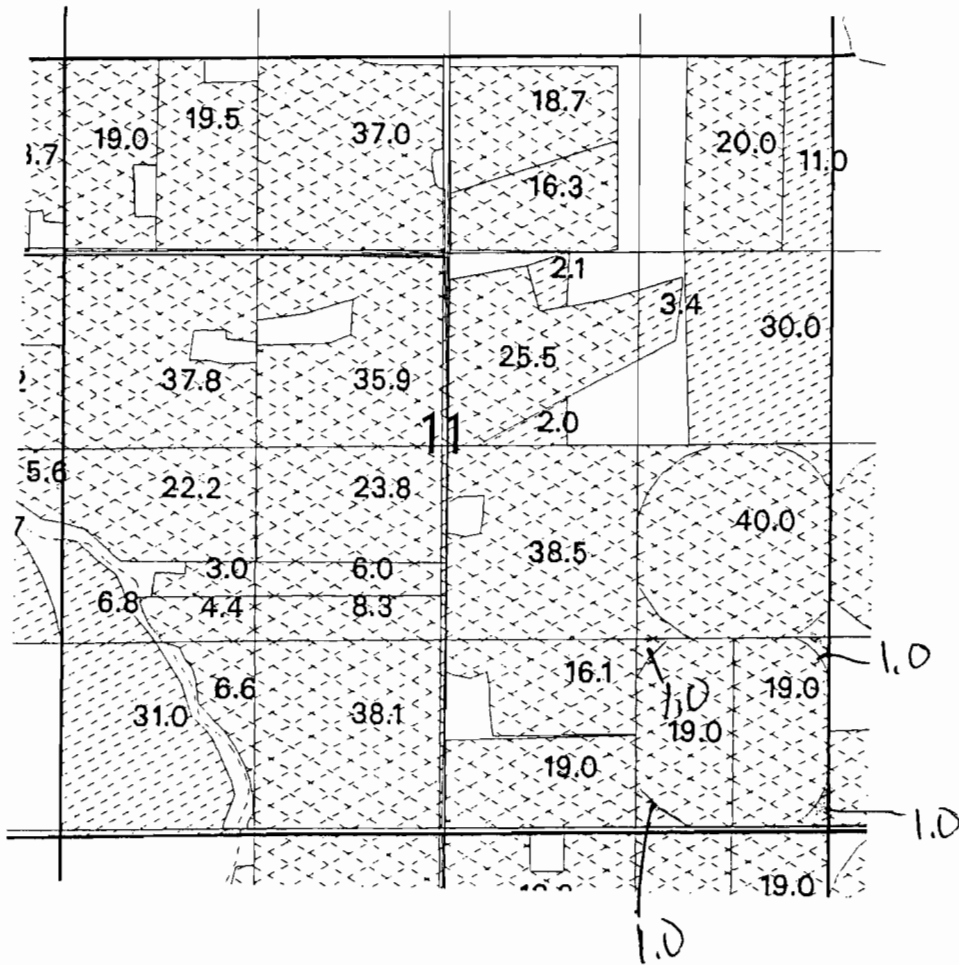
1" = 1320'

RECEIVED

FEB 28 2000

WATER RESOURCES DEPT
SALEM, OREGON

T. 4 N., R. 29 E., W.M.
 Section 11



“FROM” LANDS

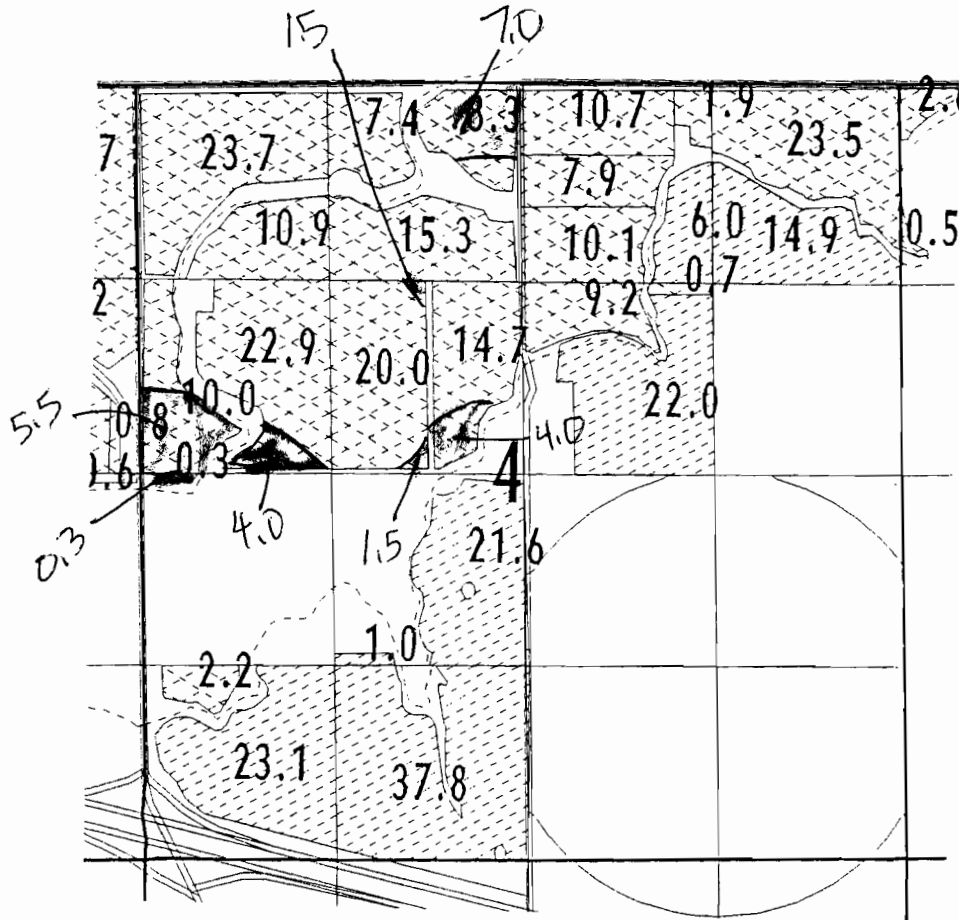
1" = 1320'

RECEIVED

FEB 28 2008

WATER RESOURCES DEPT
 SALEM, OREGON

T. 3 N., R. 29 E., W.M.
Section 05



“FROM” LANDS

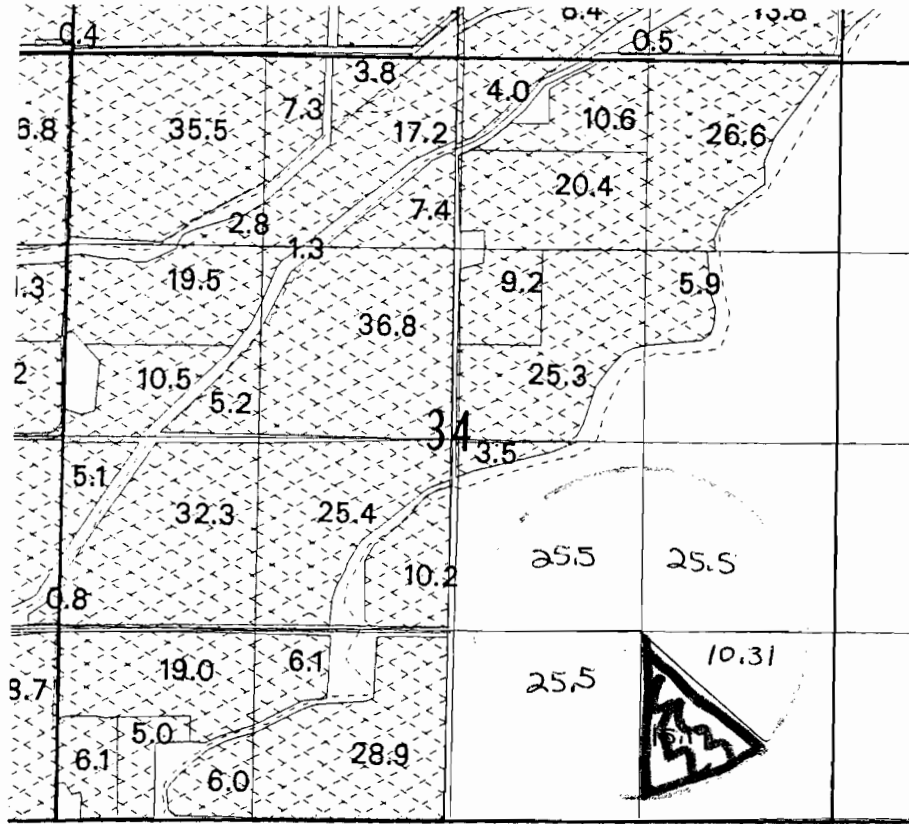
1" = 1320'

RECEIVED

FEB 28 2008

WATER RESOURCES DEPT
SALEM, OREGON

T. 4 N., R. 29 E., W.M.
Section 34

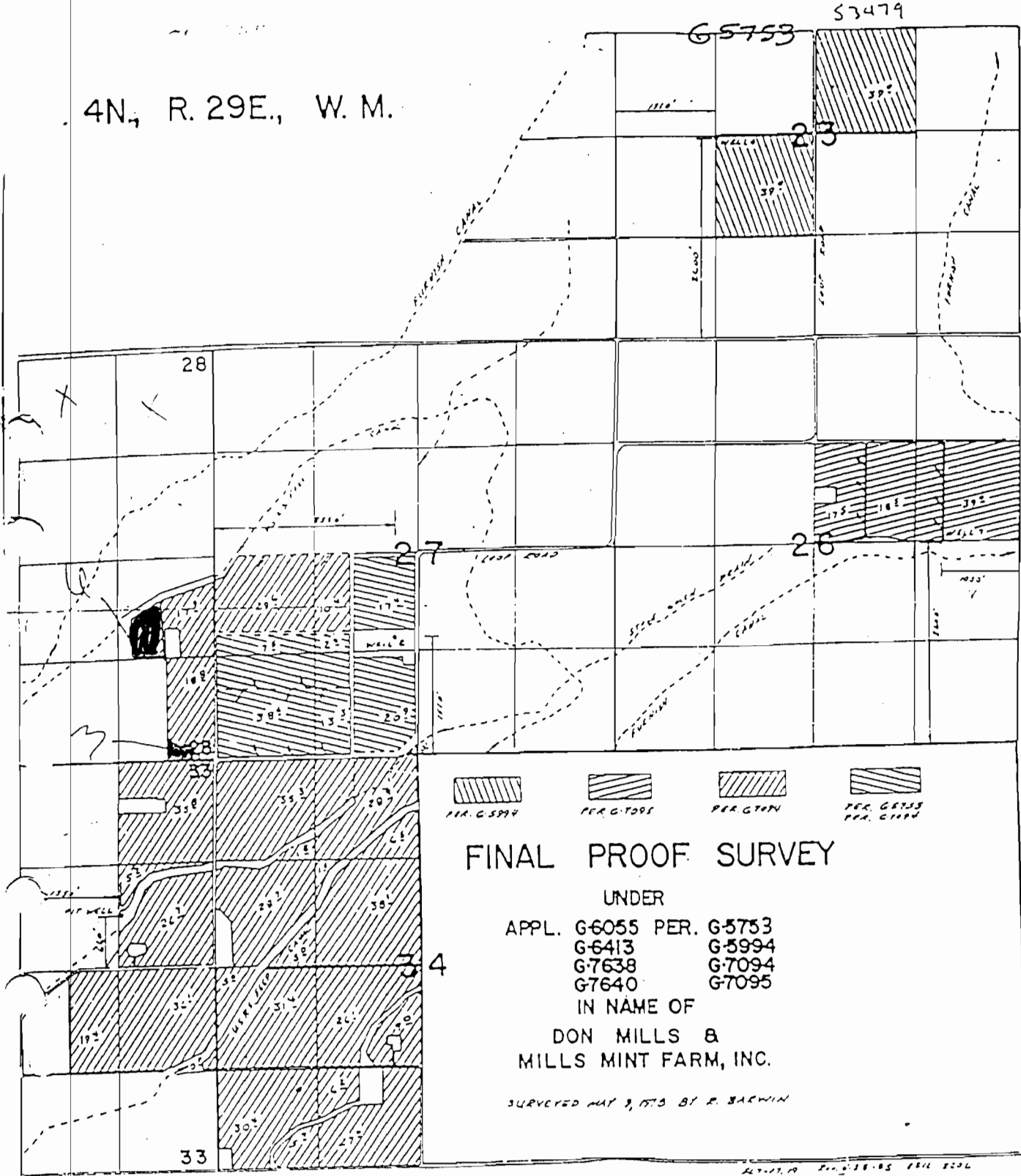


Scale: $\frac{1}{2}$ in. = 1320

“TO” LANDS

RECEIVED
FEB 28 2008
WATER RESOURCES DEPT
SALEM, OREGON

4N, R. 29E., W. M.



- 
 PER. G-5994
- 
 PER. G-7095
- 
 PER. G-7094
- 
 PER. G-5753
 PER. G-5994

FINAL PROOF SURVEY

UNDER

APPL. G-6055 PER. G-5753
 G-6413 G-5994
 G-7638 G-7094
 G-7640 G-7095

IN NAME OF

DON MILLS &
 MILLS MINT FARM, INC.

SURVEYED MAY 3, 1973 BY E. BAEWIN

4N 29E WM 28 TX LT 2200 NE SE 60
 4N 29E WM 29 TX LT 2200 SE SE 30

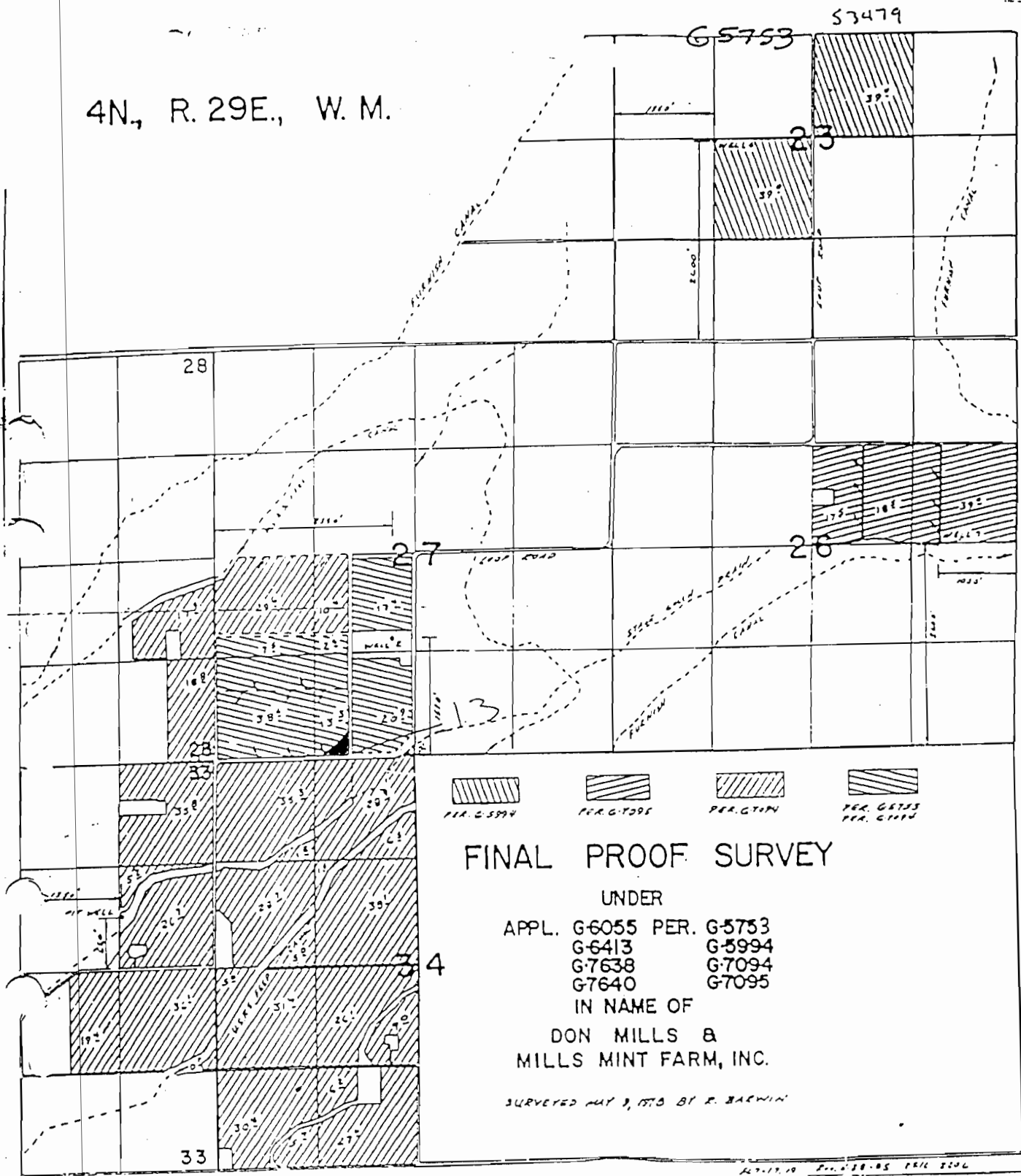
RECEIVED

CERTIFICATE # 74882

FEB 28 2008

WATER RESOURCES DEPT
 SALEM, OREGON

4N., R. 29E., W. M.



FINAL PROOF SURVEY

UNDER
 APPL. G-6055 PER. G-5753
 G-6413 G-5994
 G-7638 G-7094
 G-7640 G-7095

IN NAME OF
 DON MILLS &
 MILLS MINT FARM, INC.

SURVEYED MAY 9, 1970 BY R. BAEWIN

4N 29E WM 27 TX LT 3200 SE SW 1.3

CERTIFICATE # 53479

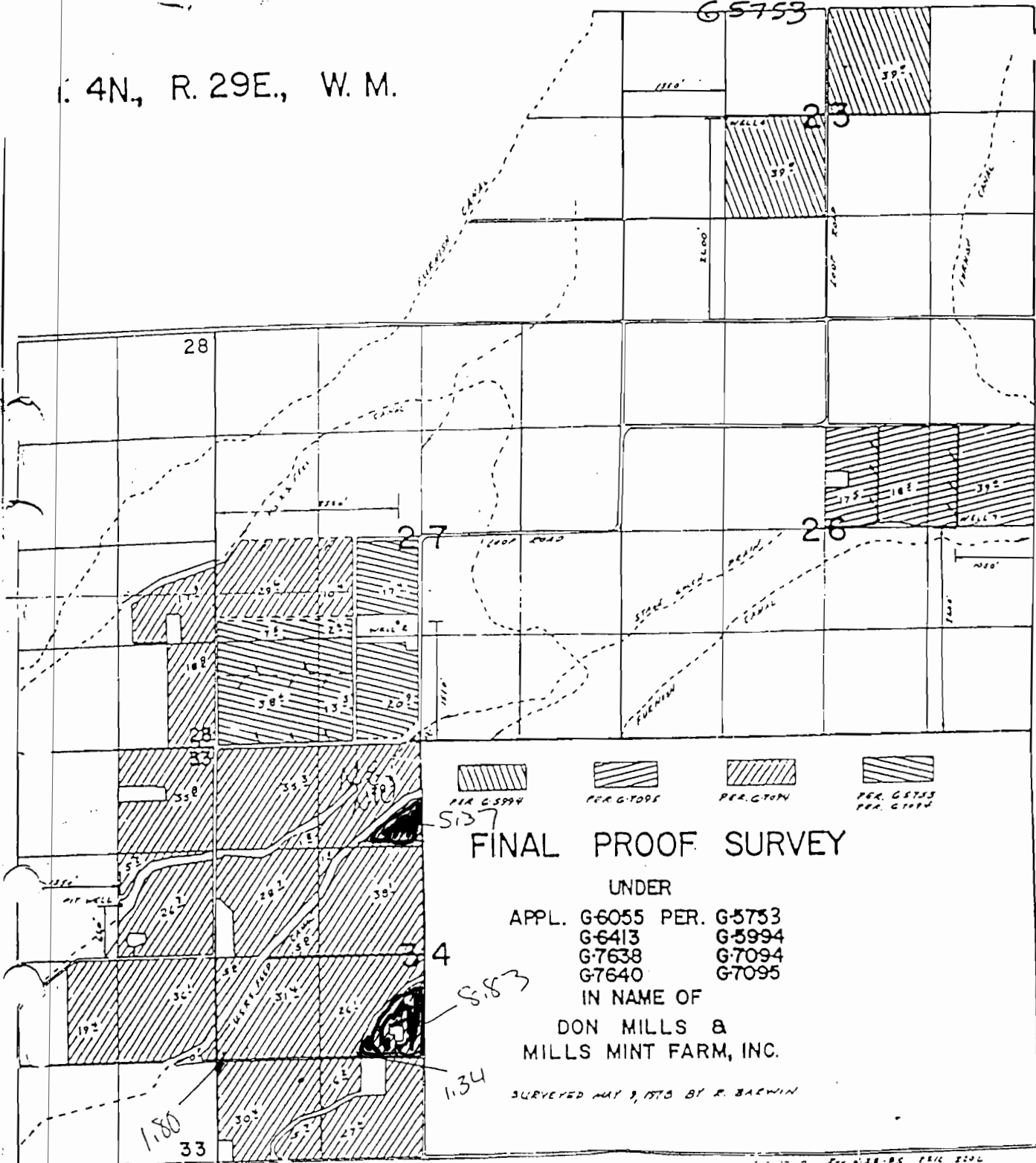
RECEIVED

FEB 28 2008

WATER RESOURCES DEPT
 SALEM, OREGON

4N., R. 29E., W. M.

G5753 53479



FINAL PROOF SURVEY

UNDER
 APPL. G-6055 PER. G-5753
 G-6413 G-5994
 G-7638 G-7094
 G-7640 G-7095

IN NAME OF
 DON MILLS &
 MILLS MINT FARM, INC.

SURVEYED MAY 9, 1970 BY E. BAERWIN

- 4N 29E WM 34 TX LT 300 NENW 5.37
- 4N 29E WM 34 TX LT 800 NENW 8.83
- 4N 29E WM 34 TX LT 500 NENW 1.34
- 4N 29E WM 34 TX LT 500 NENW 1.80

CERTIFICATE # 74883

RECEIVED

FEB 28 2008

WATER RESOURCES DEPT
SALEM, OREGON