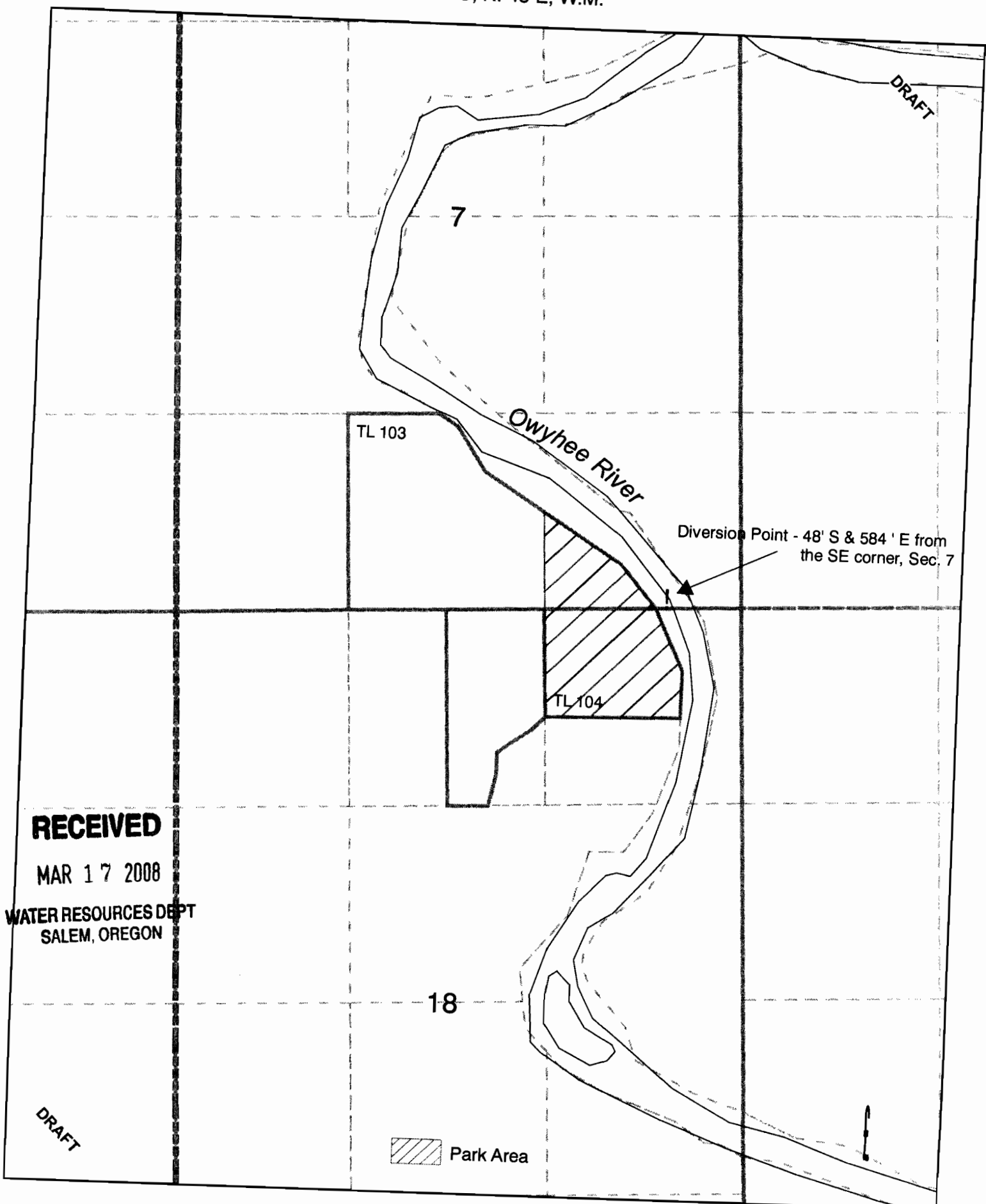


To Lands
T. 22 S, R. 45 E, W.M.



RECEIVED

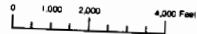
MAR 17 2008

WATER RESOURCES DEPT
SALEM, OREGON

 Park Area

1 inch equals 800 feet

THIS MAP WAS PREPARED FOR ASSESSMENT PURPOSE ONLY



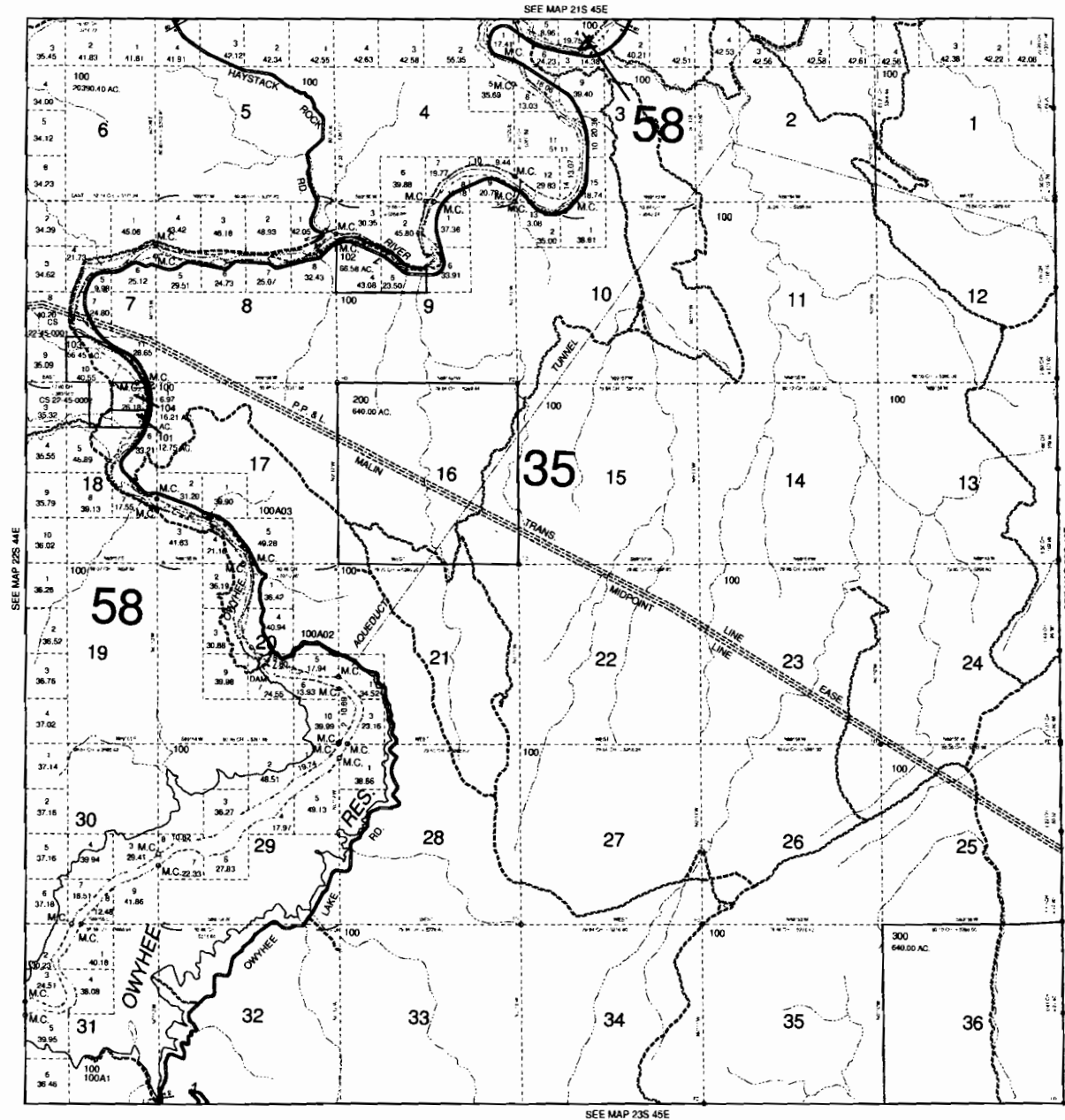
T.22S. R.45E. W.M.
MALHEUR COUNTY
1" = 2000'

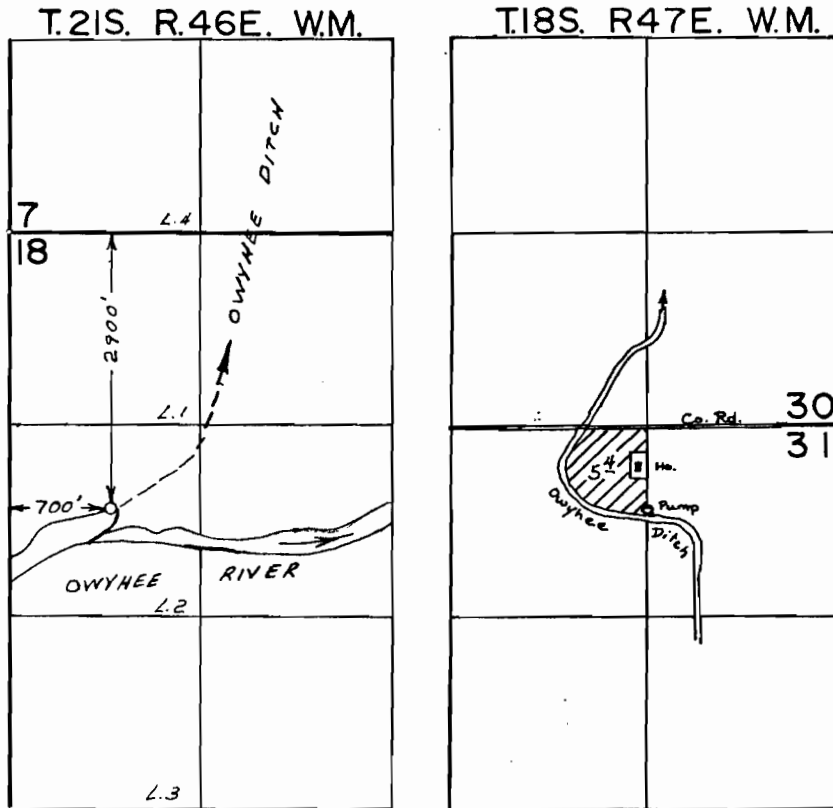
22S 45E

RECEIVED

MAR 17 2008

WATER RESOURCES DEPT
SALEM, OREGON





FINAL PROOF SURVEY
UNDER

Application No. 53714 Permit No. 40841
IN NAME OF

OWYHEE DITCH COMPANY

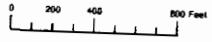
Surveyed OCT. 14, 1977, by J.S. DONALDSON
June 22 1978 by L.H. Nunn

RECEIVED

MAR 17 2008

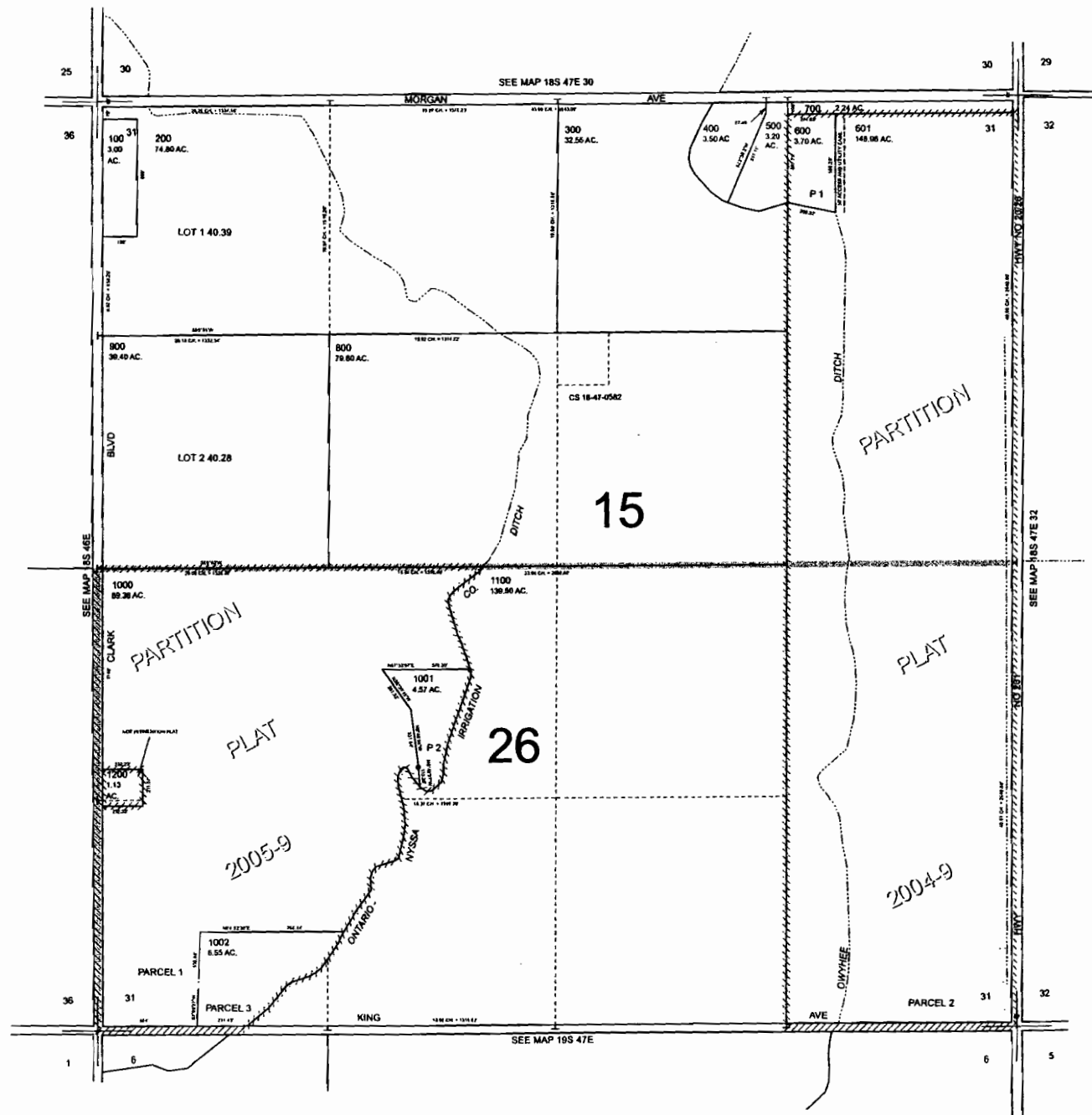
WATER RESOURCES DEPT
SALEM, OREGON

THIS MAP WAS PREPARED FOR ASSESSMENT PURPOSE ONLY



SECTION 31 T.18S. R.47E. W.M.
MALHEUR COUNTY
1" = 400'

18S 47E 31



RECEIVED

MAR 17 2008

WATER RESOURCES DEPT
SALEM, OREGON

RECEIVED

MAR 17 2008

WATER RESOURCES DEPT
SALEM, OREGON

*Received this map from SWCD.
They indicated this arial photo
is from a 2006 flight.*

Ron Gaedda

*NE CORNER of
SEC. 31 T-18s R47E*

