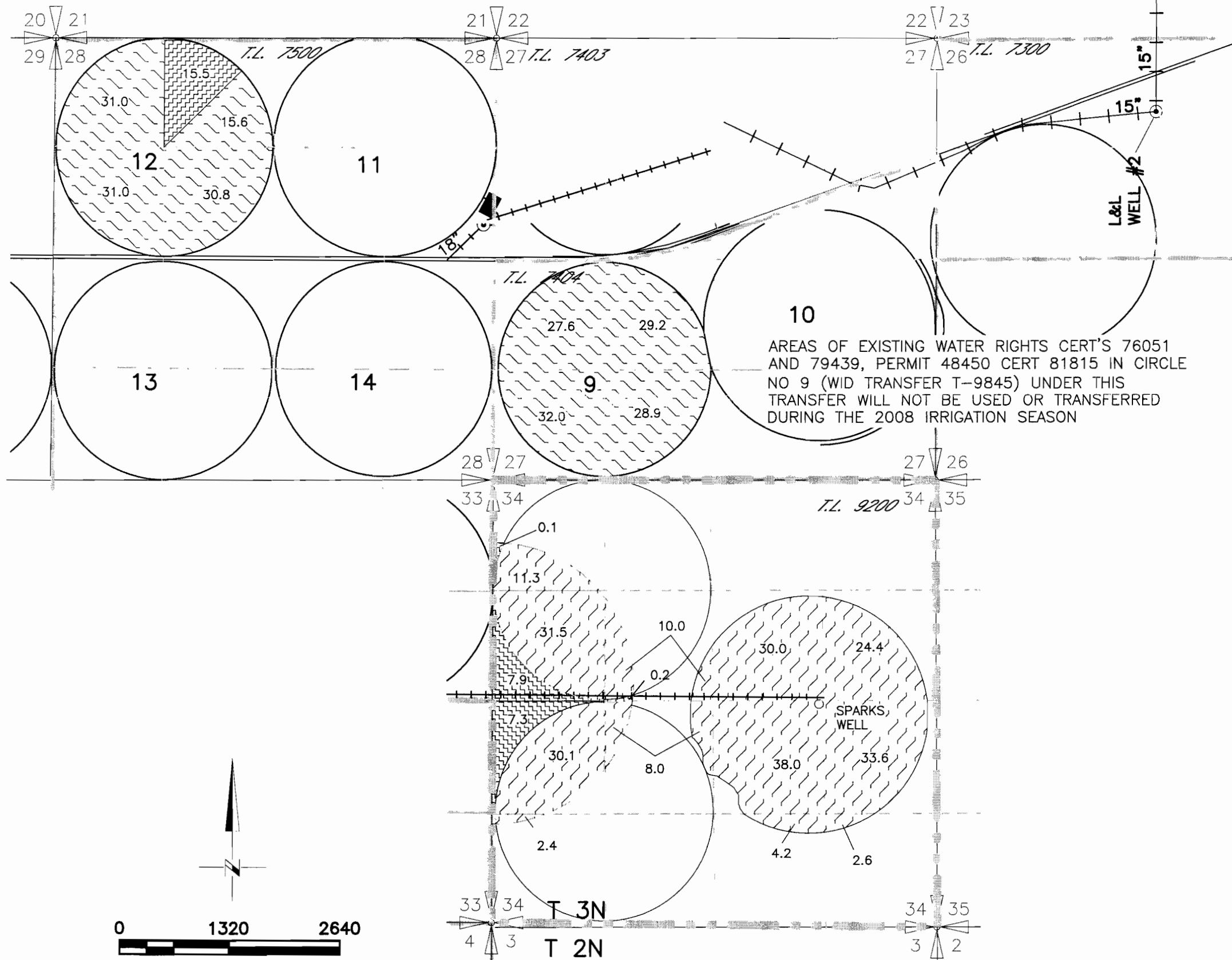
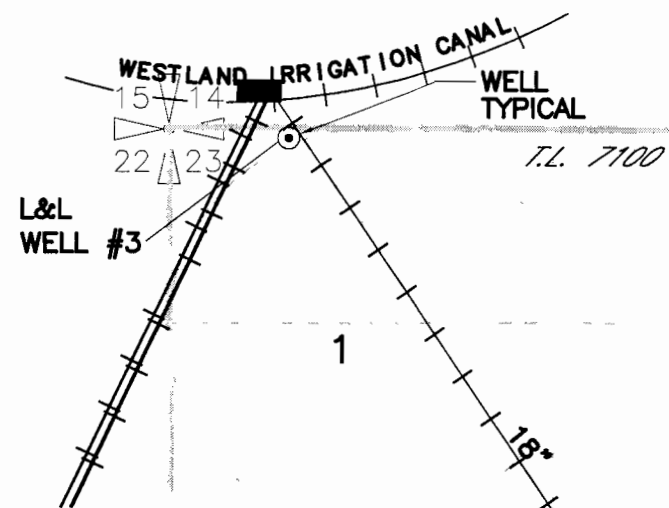


J R SIMPLOT (SPARKS) TO L & L FARMS
 2008
 TEMPORARY WATER RIGHTS TRANSFER
 T3N, R28E WM

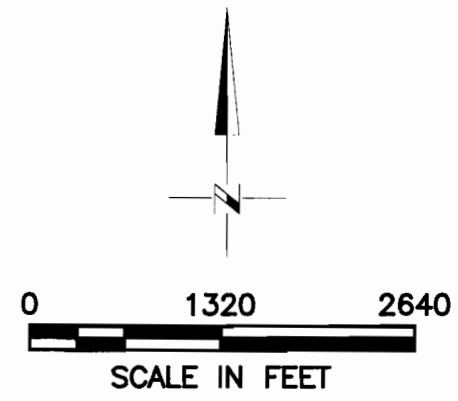
SPARKS WELL LOCATED AT 1300' N AND 60' W FROM THE SE CORNER NW 1/4 SE 1/4 OF SECTION 34, T3N, R28E WM
 * L&L WELL #1, 400HP * LOCATED 960'N & 30'E FROM THE S 1/4 CORNER SECTION 23, T3N, R28E WM
 * L&L WELL #2, 350HP * LOCATED 930'S FROM THE N 1/4 CORNER SECTION 26, T3N, R28E WM
 * L&L WELL #3, 400HP * LOCATED 60'S & 820'E FROM THE NW CORNER SECTION 23

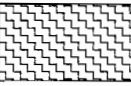
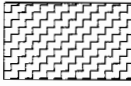
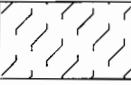
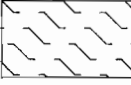
* THESE WELLS DURING SIMPLOTS 2008 TEMPORARY TRANSFER WILL BE ADDITIONAL POINTS OF DIVERSION TO SPARKS WELL
 PERMIT G-5812 CERTS 79993 & 76263

EXISTING WATER RIGHTS IN CIRCLE 12 WILL BE TRANSFERRED OFF IN 2008 WESTLAND IRRIGATION DISTRICT TRANSFER, EXCEPT FOR 1.2 ACRES IN NW NW



AREAS OF EXISTING WATER RIGHTS CERT'S 76051 AND 79439, PERMIT 48450 CERT 81815 IN CIRCLE NO 9 (WID TRANSFER T-9845) UNDER THIS TRANSFER WILL NOT BE USED OR TRANSFERRED DURING THE 2008 IRRIGATION SEASON



FROM	TO
 15.5	PRIMARY G-5812 T-7197 CERT 79993  15.5
 226.1	PRIMARY G-5812 CERT 76263  226.1

NOTE:
 THE PURPOSE OF THIS MAP IS TO IDENTIFY THE APPROXIMATE LOCATION OF THE WATER RIGHT. IT IS NOT INTENDED TO PROVIDE INFORMATION RELATIVE TO THE LOCATION OF PROPERTY OWNERSHIP BOUNDARY LINES.

DRAWING: H:\CAD\AG\3522\318\3522ST08.dwg
 PRINTED BY: Roger Willard on 01/31/08 11:25 AM

RECEIVED
 JAN 31 2008
 WESTLAND IRRIGATION DISTRICT
 DISTRICT OFFICE