
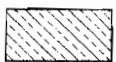




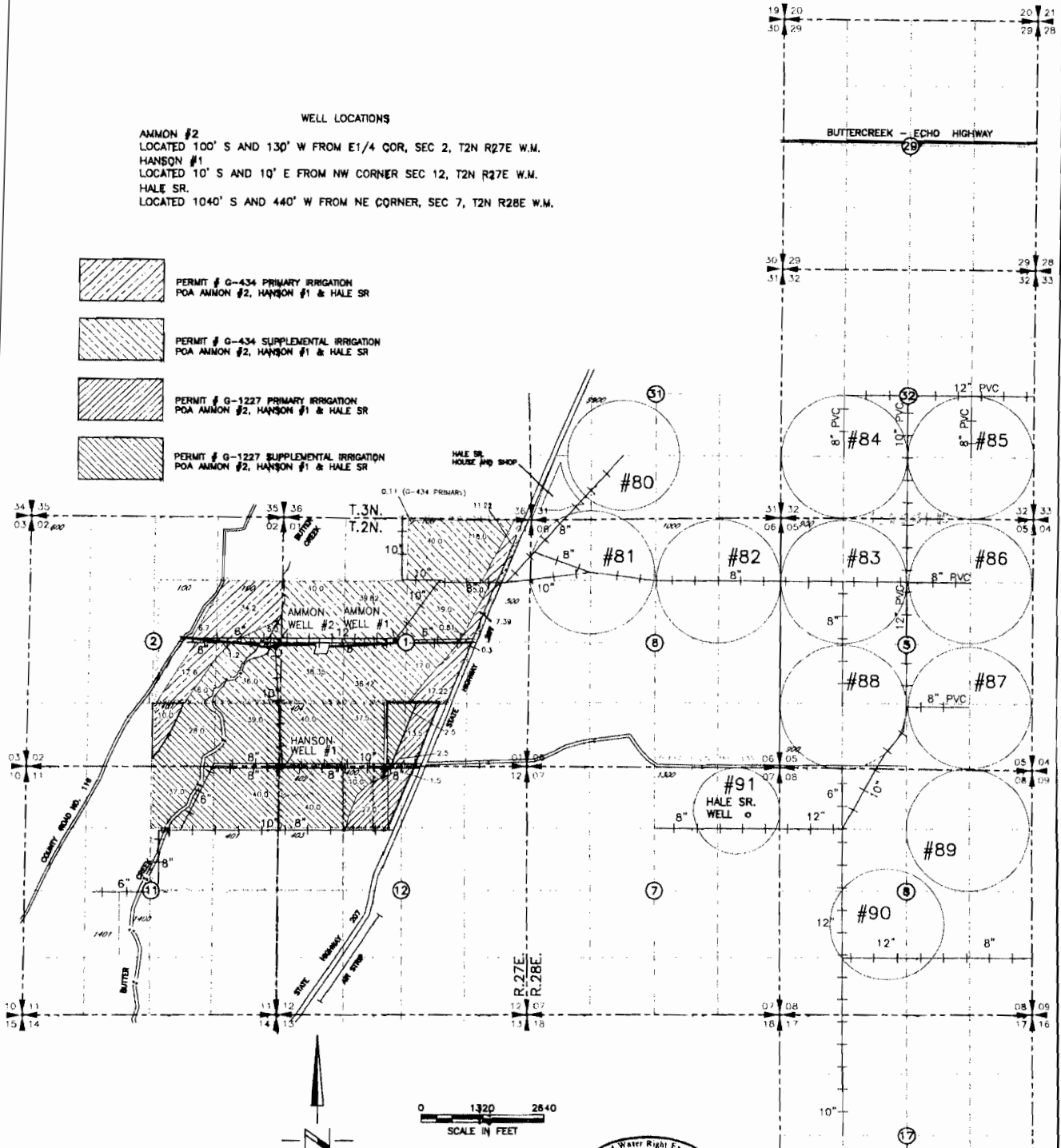
# FINAL PROOF MAP HALE BROTHERS FARMS TRANSFER T-8507 INVOLVING PERMITS G-434 AND G-1227

RECEIVED  
DEC 10 2005  
WATER RESOURCES DEPT  
SALEM OREGON

### WELL LOCATIONS

AMMON #2  
LOCATED 100' S AND 130' W FROM E 1/4 QOR, SEC 2, T2N R27E W.M.  
HANSON #1  
LOCATED 10' S AND 10' E FROM NW CORNER SEC 12, T2N R27E W.M.  
HALE SR.  
LOCATED 1040' S AND 440' W FROM NE CORNER, SEC 7, T2N R28E W.M.

-  PERMIT # G-434 PRIMARY IRRIGATION  
POA AMMON #2, HANSON #1 & HALE SR
-  PERMIT # G-434 SUPPLEMENTAL IRRIGATION  
POA AMMON #2, HANSON #1 & HALE SR
-  PERMIT # G-1227 PRIMARY IRRIGATION  
POA AMMON #2, HANSON #1 & HALE SR
-  PERMIT # G-1227 SUPPLEMENTAL IRRIGATION  
POA AMMON #2, HANSON #1 & HALE SR



NOTE: THE PURPOSE OF THIS MAP IS TO IDENTIFY THE APPROXIMATE LOCATION OF THE WATER RIGHT. IT IS NOT INTENDED TO PROVIDE INFORMATION RELATIVE TO THE LOCATION OF PROPERTY OWNERSHIP BOUNDARY LINES.



0157

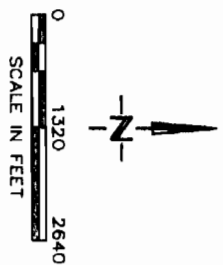
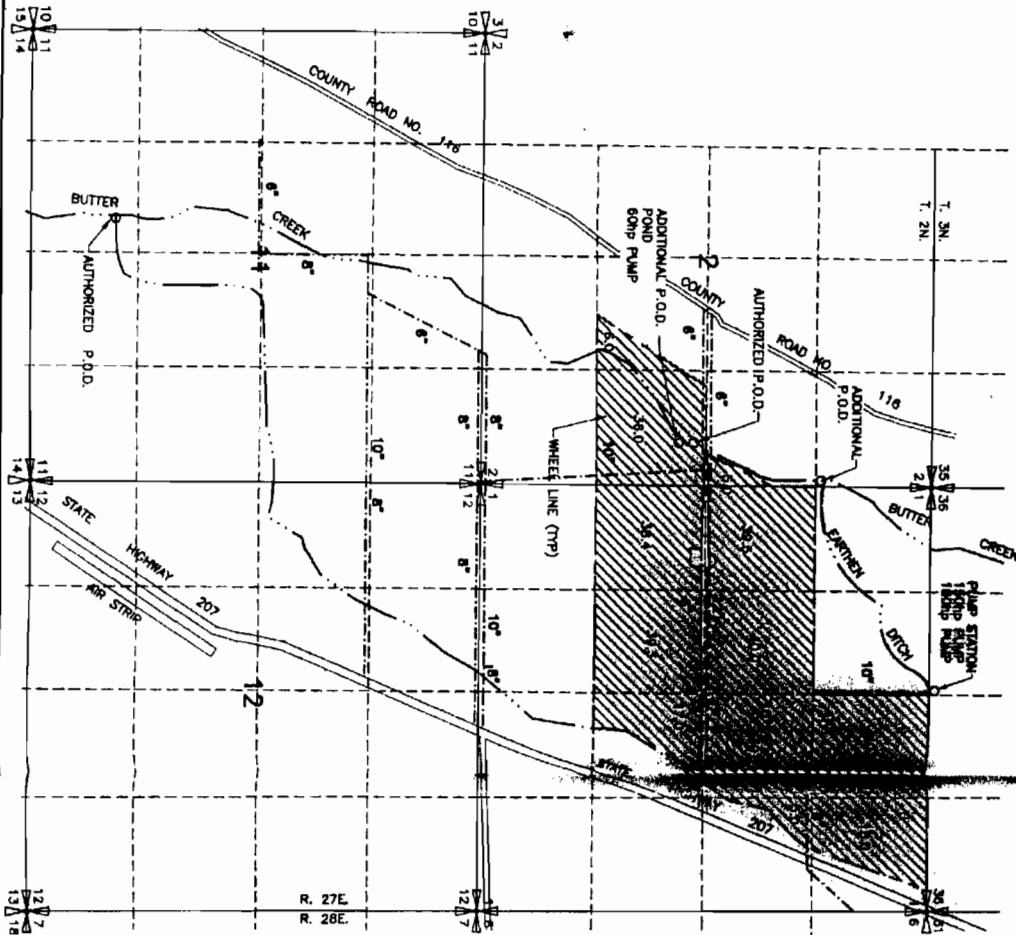
**SCM** Consultants, Inc.  
A Tetra Tech Company

11/21/03

DRAWING: H:\CADD\103522\03135220317\04.dwg  
PRINTED BY: Robert on 11/23/05 10:17 AM

T 10586

**BUTTER CREEK**  
**FINAL PLAN**  
**T. 2 N., R. 27 E. WM.**



**RECEIVED**  
 NOV 09 1998

- 6" — DISTRIBUTION SYSTEM
- ▨ AREA OF BENEFICIAL USE
- ▬ FRIGATED WITH WHEEL LINES AND HAND LINES
- WATER RESOURCES DEPT  
 SALEM, OREGON

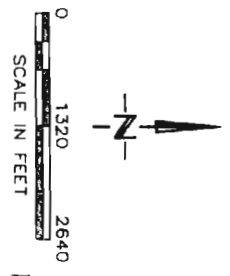
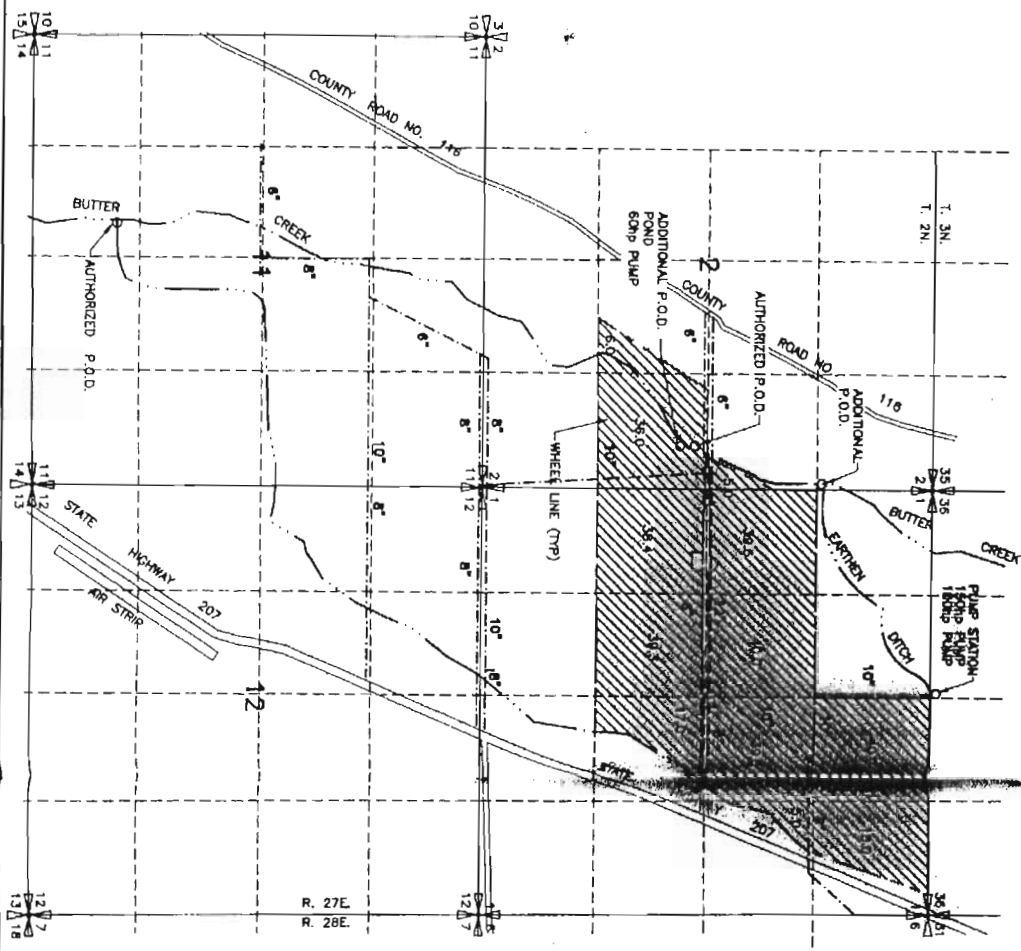
NOTE: THE PURPOSE OF THIS MAP IS TO IDENTIFY THE APPROXIMATE LOCATION OF THE WATER RIGHT. IT IS NOT INTENDED TO PROVIDE INFORMATION RELATIVE TO THE LOCATION OF PROPERTY OWNERSHIP BOUNDARY LINES.



**BAV Consultants, Inc.**  
 Architects & Engineers  
 Kennewick, WA 99336

3522031  
 SEPTEMBER 30, 1998  
 3522878-DWC

**BUTTER CREEK IRRIGATION DISTRICT  
FINAL PROJECT SURVEY  
T-2645  
T. 2 N., R. 27 E. WM.**



**RECEIVED**  
NOV 09 1998

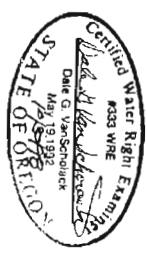
WATER RESOURCES DEPT  
SALEM, OREGON

--- 5' --- DISTRIBUTION SYSTEM

AREA OF BENEFICIAL USE  
IRRIGATED WITH WHEEL LINES AND HAND LINES

AUTHORIZED P.O.D. 50' S AND 350' W FROM E 1/4 CORNER SECTION 2  
 AUTHORIZED P.O.D. 970' N AND 450' W FROM S 1/4 CORNER SECTION 2  
 ADDITIONAL P.O.D. 1290' S AND 80' W FROM NE CORNER SECTION 11  
 ADDITIONAL P.O.D. 2920' S AND 500' W FROM NE CORNER SECTION 2

NOTE: THE PURPOSE OF THIS MAP IS TO DENIFY THE APPROXIMATE LOCATION OF THE WATER RIGHT. IT IS NOT INTENDED TO PROVIDE INFORMATION RELATIVE TO THE LOCATION OF PROPERTY OWNERSHIP BOUNDARY LINES.



**R&E** Consultants, Inc. Architects & Engineers  
Kennewick, WA 99336

3522 031  
SEPTEMBER 30, 1998  
3522BTP-DWG