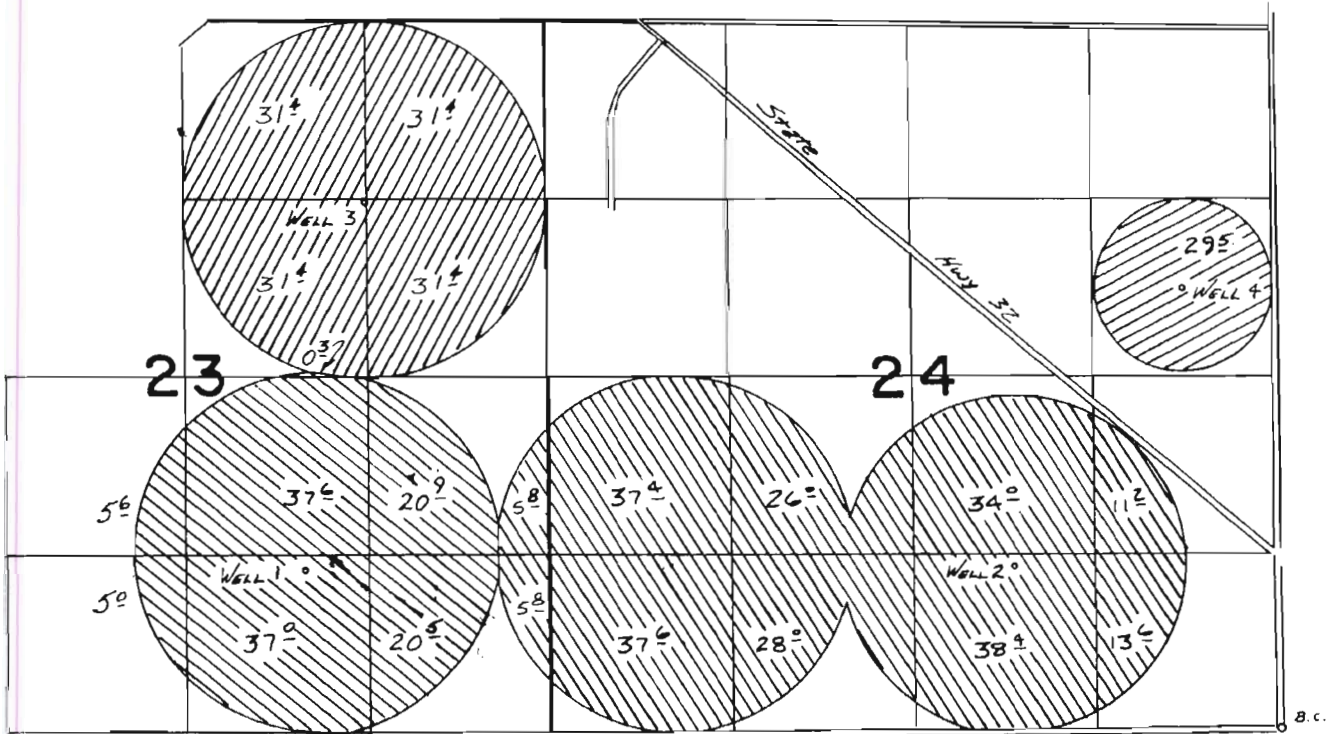


T. 4N., R. 28E., W.M.



WELL 1 LOC: 1210' N. & 1800' W. FROM SE COR. SEC 23  
 WELL 2 LOC: 1230' N. & 1910' W. FROM SE COR. SEC 24  
 WELL 3 LOC: 1350' S. & 1330' W. FROM NE COR. SEC 23  
 WELL 4 LOC: 660' N. & 670' W. FROM E 1/4 COR. SEC 24



**FINAL PROOF SURVEY**  
 UNDER

Application No. **G-7851** Permit No. **G-7183**  
 IN NAME OF

**VERNON & IVAN COOK**

Surveyed 5-13 1982, by J.H. Church

T 10588

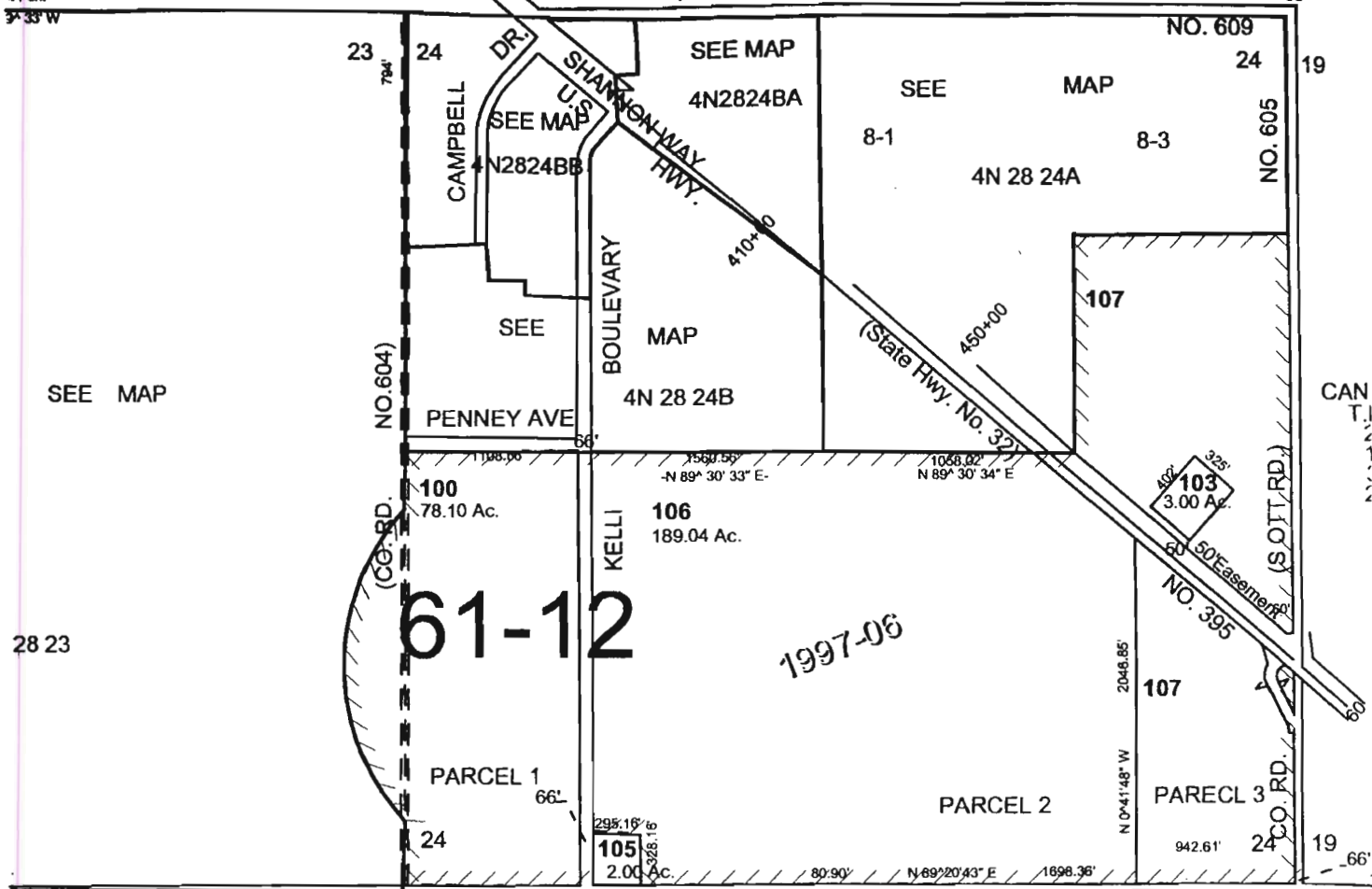
2232 2226

4N 28 14CC  
41 ch.  
3° 33' W

14 13

See Map 4N 28A

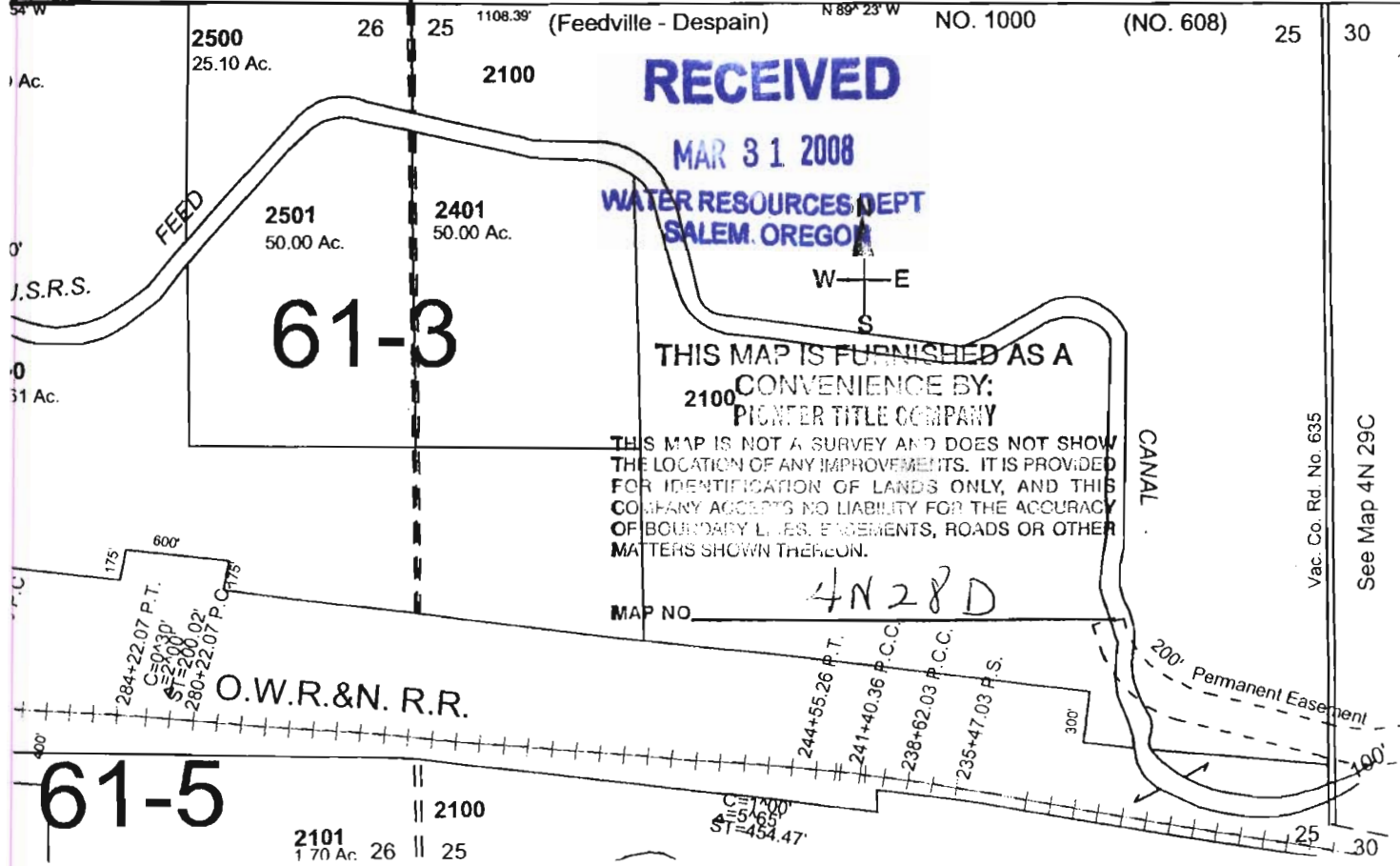
13 6018



61-12

1997-06

28 23

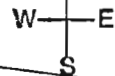


61-3

RECEIVED

MAR 31 2008

WATER RESOURCES DEPT  
SALEM, OREGON



THIS MAP IS FURNISHED AS A  
CONVENIENCE BY:  
PIONEER TITLE COMPANY

THIS MAP IS NOT A SURVEY AND DOES NOT SHOW  
THE LOCATION OF ANY IMPROVEMENTS. IT IS PROVIDED  
FOR IDENTIFICATION OF LANDS ONLY, AND THIS  
COMPANY ACCEPTS NO LIABILITY FOR THE ACCURACY  
OF BOUNDARY LINES, EASEMENTS, ROADS OR OTHER  
MATTERS SHOWN THEREON.

MAP NO. 4N 28 D

61-5

T 10588

29.5 Acre in the SW ¼ of Circle #2 was irrigated under Temp. Transfer T-9671 during the 2004 Irrigation Season and during the 2005 Season the SW ¼ of Circle # 41 was irrigated under Temp. Transfer T-9881

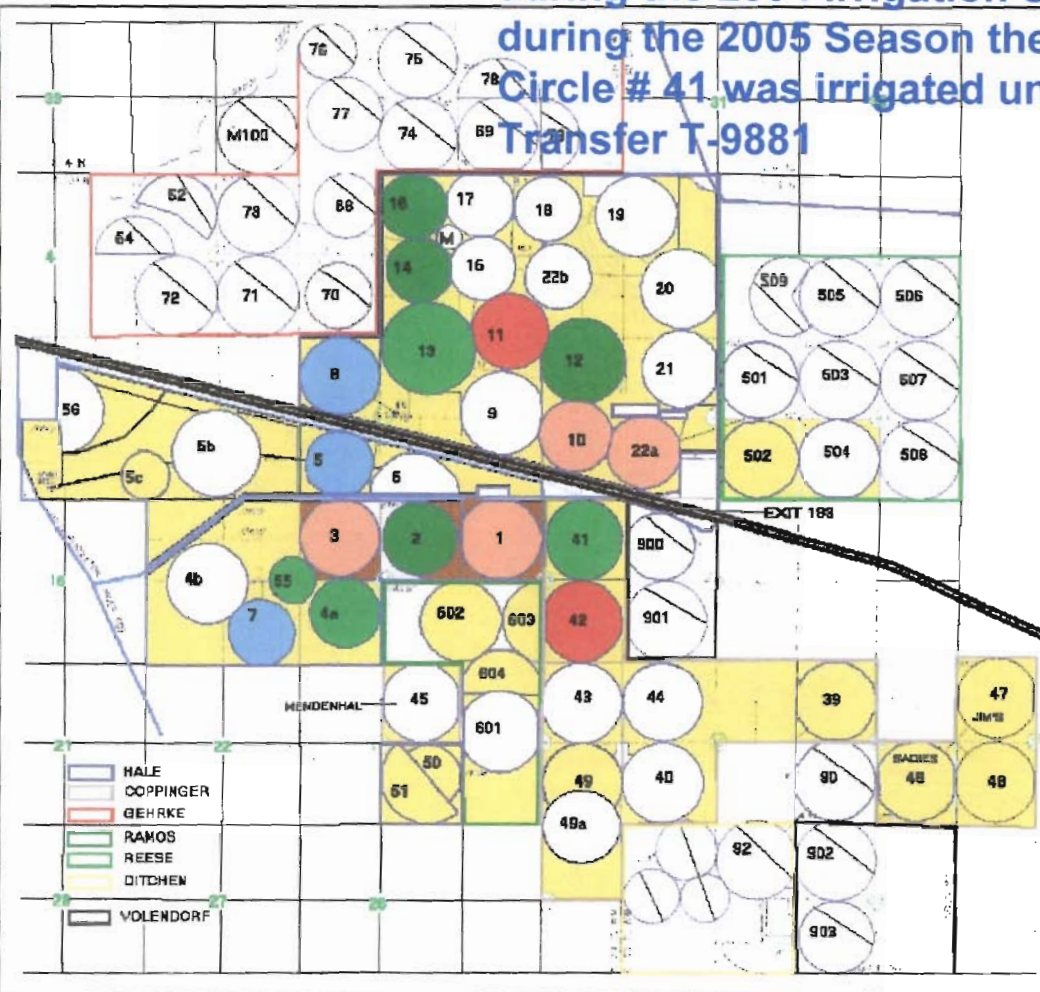
**HALE FARMS**  
2005 FIELD LIST - ECHO FARM

SOUTH			COPPINGER		
#	ACRES	CROP	#	ACRES	CROP
1	118.2	PS	39	121.9	DW
2	122.8	T	40	118.9	IW
3	120.6	PS	41	116.3	G
4a	98.7	G	42	120.8	PO
4b	127.6	IW	43	120.8	IW
5a	95.5	FO	44	121.5	IW
5b	148.1	IW	45	118.2	IW
5c	In Dry	DW	46	126.2	DW
6	98.3	IW	47	126.3	DW
7	58.0	FO	48	125.1	DW
	0.0		49	0.0	
90	42.4	DW	Risot	145.2	DW
51	87.8	DW	Maud	57.1	DW
55	40.9	G	Mend	38.6	DW
5e	85.0	IW	Sadies	31.1	DW
D. Wht	769.0	DW	Jlma	87.8	DW
Leis.	132.7	DW	Selvers	510.2	DW
D. Fal	100.0	SP	Selvers	495.2	DW
CRP	29.2	C	Hypo	555.6	DW
18	2,254.8		Dry	298.5	DW
			Dry	45.4	DW
			20	3,480.7	

NORTH			OTHER		
#	ACRES	CROP	#	ACRES	CROP
8	110.2	FO	601	118.3	IW
9	128.3	IW	603	65.0	DW
10	93.7	PS	604	69.0	DW
11	102.5	PO	502	119.1	DW
12	125.1	T	504	120.0	IW
13	160.5	G	900	105.0	
14	80.0	T	511	26.3	IW
Mini	12.2	IW	49a	119.3	IW
15	78.0	IW	Ramos	450.0	DW
16	80.7	T	7	1,192.0	
17	77.7	IW			
18	88.8	IW			
19	120.9	IW			
20	127.0	IW			
21	78.6	IW			
22a	101.6	PS			
22b	95.7	IW			
D. Wht	680.4	DW			
D. Fal					
CRP					
Scab					
18	2,341.9				

CROP	ACRES	
T	Timothy	408.6
B	Barley	0.0
C	CRP	29.2
DW	D. Wheat	5,159.6
IW	I. Wheat	2,109.5
SP	Fallow	100.0
G	Grass	416.4
PS	Peas	434.1
PO	Potato	223.3
FO	Fr Onion	263.7

CROP YEAR	ACRES
2005	9,249.4



T 10588

WATER RESOURCES DEPT  
SALEM, OREGON

MAR 31 2008

RECEIVED