

APPLICATION MAP FOR GROUND  
 WATER RIGHTS  
 Spin & Marty LLC  
 Located in T 1 S., Range 30 E.  
 Sections 16 & 17 Taxlot 1100

Section 16  
 NW/SW 12.4 Ac.  
 SW/SW 19.0 Ac.  
 Section 17  
 NE/SE 26.9 Ac.  
 NW/SE 27.2 Ac.  
 SE/NE 2.3 Ac.  
 SW/NE 18.4 Ac.  
 SE/NW 37.0 Ac.  
 NE/SW 16.8 Ac.  
 160.0 Ac.

Application G-16092 Permit G-15724

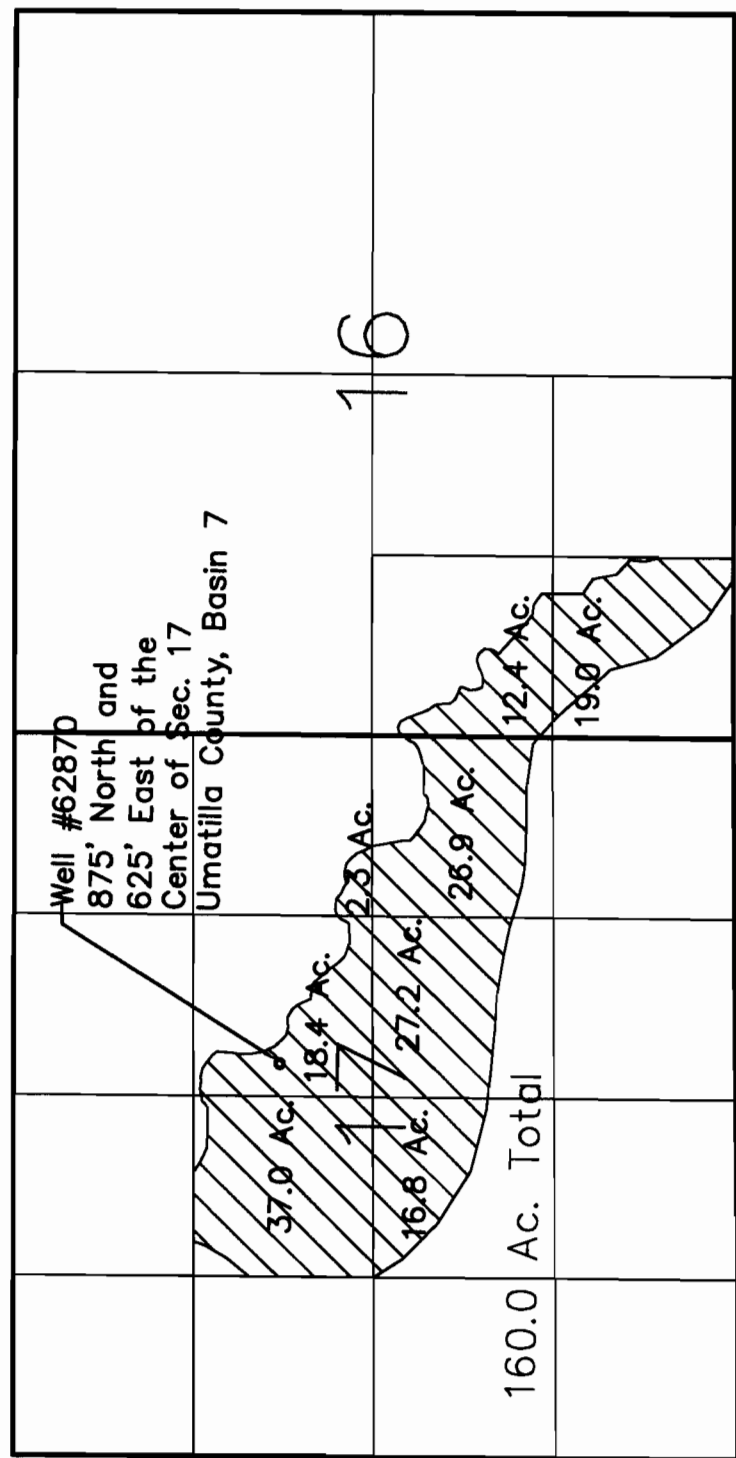


Scale 1"=1320'

**RECEIVED**

APR 14 2008

WATER RESOURCES DEPT  
 SALEM, OREGON



T 10596

Well

17

1 inch = 500' approx.

NW quarter of Section 17

3 acres SW 1/4 of NW 1/4

7 acres SE 1/4 of NW 1/4

30 acres NW 1/4 of SW 1/4

40 acres NE 1/4 of SW 1/4

SW quarter of Section 17

18 acres SW 1/4 of SW 1/4

34 acres SE 1/4 of SW 1/4

22 acres NW 1/4 of SE 1/4

6 acres SW 1/4 of SE 1/4

RECEIVED JUN 30 2004 WATER RESOURCES DEPT SALEM, OREGON

Application: G-16092 Permit no. G-15724

Well is located approximately 625' from the west edge of the south half of the northeast quarter of Section 17, and approximately 875' from the south edge of the southwest 1/2 of the northeast quarter of Section 17.

No pipeline yet. Proposed pipeline through south 1/2 of northeast 1/4 of Section 17 and the north 1/2 of the southeast 1/4 of Section 17. Acreage to be irrigated:

APPLICATION MAP FOR GROUND WATER RIGHTS Spin & Marty LLC

In the NW, SW, & SE 1/4 Sec. 17, T. 1S, R 30E, W.M. Umatilla County, Map 1 S 30 Tax Lot # 1100

NW & SW & SE Quarter of Section 17	Acres
SW 1/4 of NW quarter of Section 17	3
SE 1/4 of NW quarter of Section 17	7
NW 1/4 of SW quarter of Section 17	30
NE 1/4 of SW quarter of Section 17	40
SW 1/4 of SW quarter of Section 17	18
SE 1/4 of SW quarter of Section 17	34
NW 1/4 of SE quarter of Section 17	22
SW 1/4 of SE quarter of Section 17	6
Total =	160

SE quarter of Section 17

**APPLICATION MAP FOR GROUND  
WATER RIGHTS**  
Spin & Marty LLC  
Located in T 1 S., Range 30 E.  
Sections 16 & 17 Taxisot 1100

Section 16	
NW/SW	12.4 Ac.
SW/SW	19.0 Ac.
Section 17	
NE/SE	26.9 Ac.
NW/SE	27.2 Ac.
SE/NE	2.3 Ac.
SW/NE	18.4 Ac.
SE/NW	37.0 Ac.
NE/SW	18.8 Ac.
	160.0 Ac.

Application G-16092 Permit G-15724

