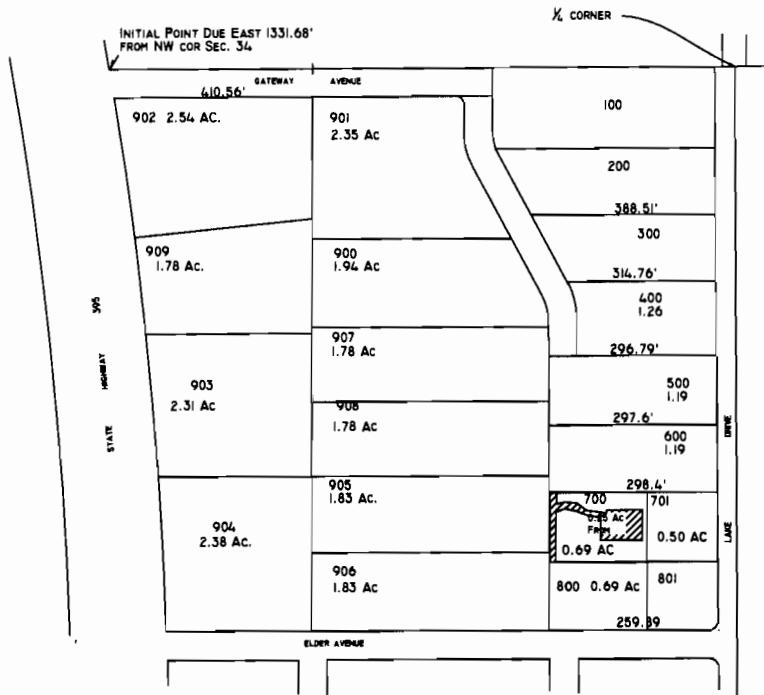


FROM ACRES - MAP NO. 1
 MARION JACK IMPROVEMENT DISTRICT
 CERT 81502 AND PER 7400
 DISTRICT TRANSFER
 NE 1/4, NW 1/4, T 2 N, R 32 E, SEC 34 NE
 NW, W.M.
 UMATILLA COUNTY



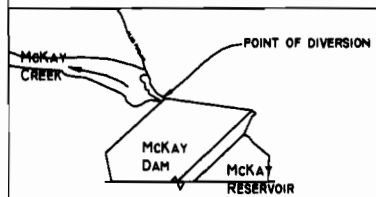
DISTRICT BOUNDARY

"FROM" ACRES

0 100 250 400
 PLOTTED AT 1" = 400'



POINT OF DIVERSION IS IN THE NW 1/4 OF THE SE 1/4,
 T. 2 N., R. 32 E., W.M. 581 FT. SOUTH AND 580 FT.
 EAST OF THE CENTER OF SECTION 34. COORDINATES N
 45.607827 W 118.794832



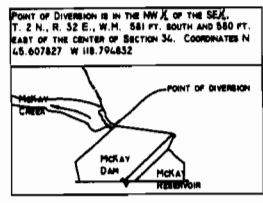
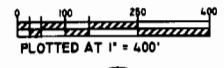
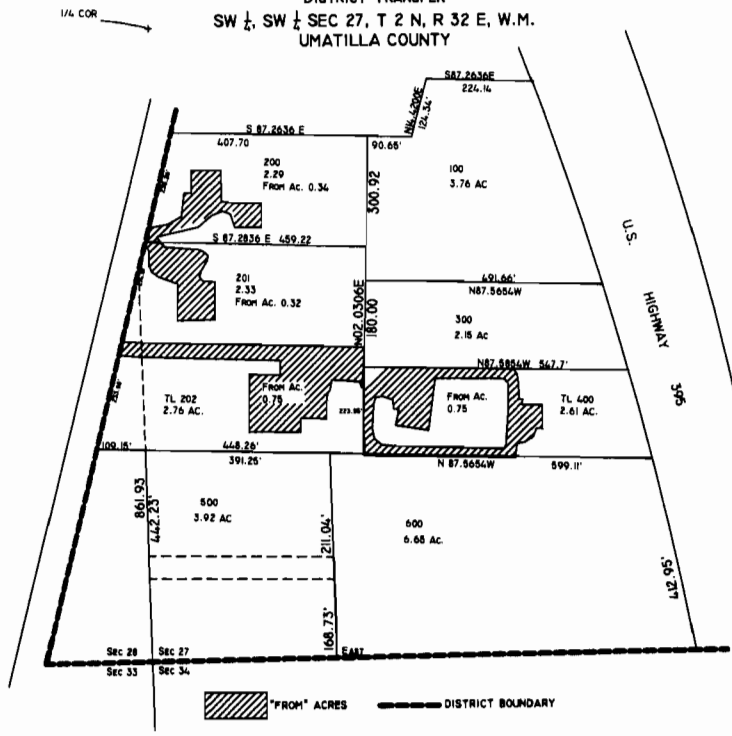
RECEIVED

APR 28 2008

WATER RESOURCES DEPT
 SALEM OREGON

T 10609

FROM ACRES - MAP NO. 2
 MARION JACK IMPROVEMENT DISTRICT
 CERT 81502 AND PER 7400
 DISTRICT TRANSFER
 SW 1/4, SW 1/4 SEC 27, T 2 N, R 32 E, W.M.
 UMATILLA COUNTY



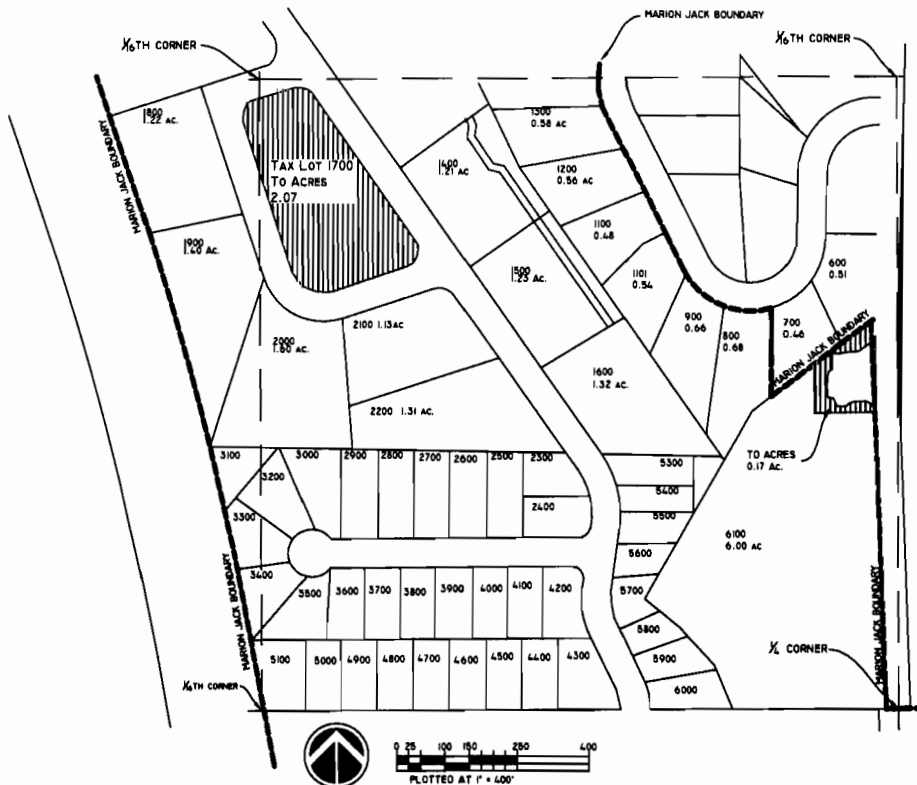
RECEIVED



APR 28 2008

WATER RESOURCES DEPT
 SALEM OREGON

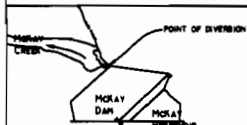
T 10609

MAP NO. 3 "TO" LANDS
 MARION JACK IMPROVEMENT DISTRICT
 CERT 81502 AND PER 7400
 DISTRICT TRANSFER
 SE 1/4 SW 1/4 Sec 27, T 2 N, R 32 E, W.M.
 AND SW 1/4 SW 1/4 Sec 27, T 2 N, R 32 E,
 W.M.



 = "TO" LANDS
 TL 1600 1.32 ac = TAX LOT NO., AND ACRES
 = MARION JACK BOUNDARY

POINT OF DIVERSION IS IN THE NW 1/4 OF THE SE 1/4
 T. 2 N., R. 32 E., W.M. 581 FT. SOUTH AND 580 FT.
 EAST OF THE CENTER OF SECTION 5c. COORDINATES N
 45.607827 W 118.794832



RECEIVED

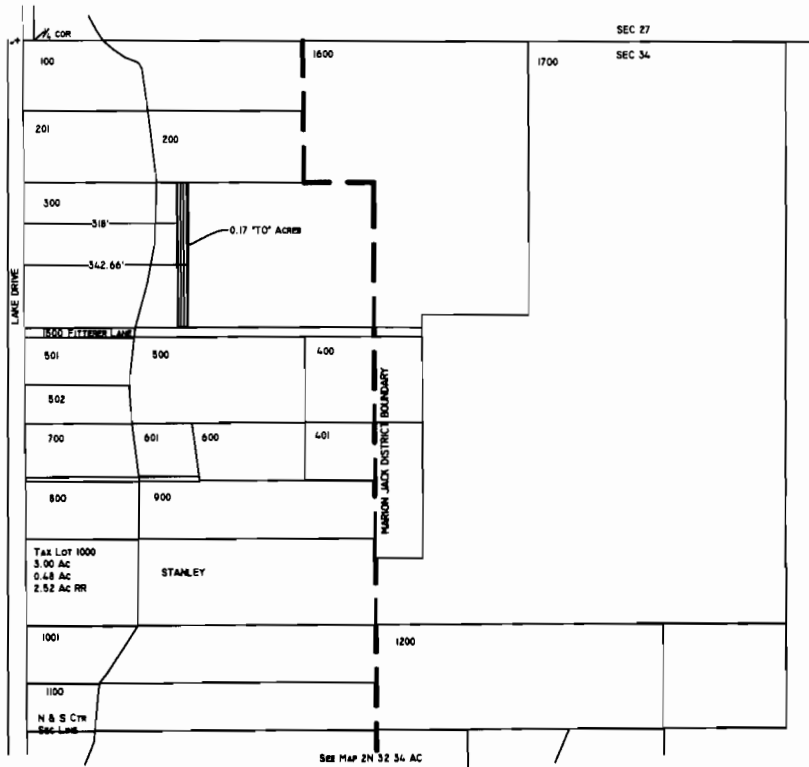
APR 28 2008

WATER RESOURCES DEPT
 SALEM OREGON

T 10609

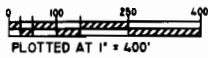
T 10609

MAP NO. 4 "TO" LANDS
 MARION JACK IMPROVEMENT DISTRICT
 DISTRICT TRANSFER
 NW 1/4 NE 1/4 SEC 34 T2N R32E WM
 UMATILLA COUNTY
 "TO" LANDS

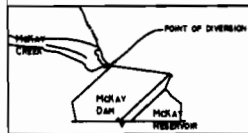


--- DISTRICT BOUNDARY

▨ "TO" ACRES



POINT OF DIVERSION IS IN THE NW 1/4 OF THE SE 1/4,
 T. 2 N., R. 32 E., W.M. 581 FT. SOUTH AND 580 FT.
 EAST OF THE CENTER OF SECTION 34. COORDINATES N
 45.607827 W 118.794832



RECEIVED

APR 28 2008

WATER RESOURCES DEPT
 SALEM, OREGON

T 10609