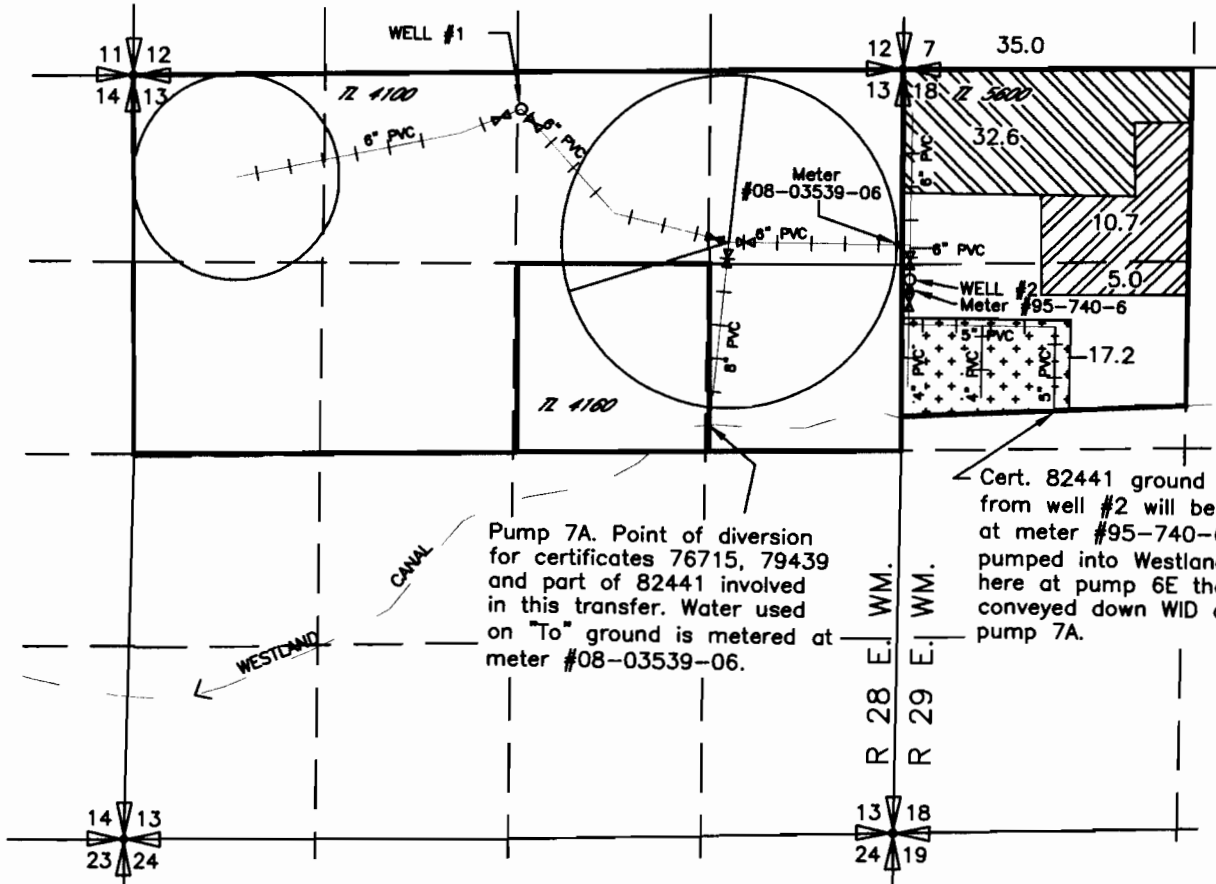


2008 WESTLAND IRRIGATION DISTRICT
 TEMPORARY TRANSFER – AMENDED 4-29-08
 DOUBLE M RANCH, INC – DOUBLE M RANCH INC
 CERTIFICATES 76715, 79439 & 82441
 T3N, R 28 & 29 E, W.M.

FROM



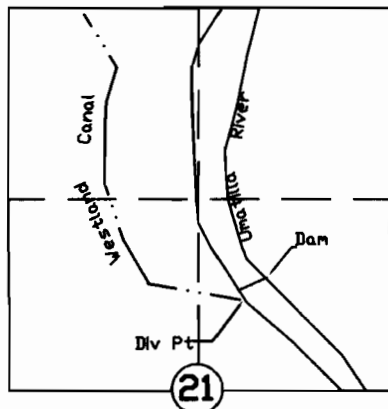
Pump 7A. Point of diversion for certificates 76715, 79439 and part of 82441 involved in this transfer. Water used on "To" ground is metered at meter #08-03539-06.

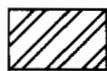


Cert. 82441 ground water from well #2 will be metered at meter #95-740-6 and pumped into Westland's canal here at pump 6E then conveyed down WID canal to pump 7A.

WELL #1 Located 270' South & 2540' West from the NE corner section 13, T3N, R28E, WM

WELL #2 Located 1450' South & 3160' West from the N 1/4 corner section 18, T3N, R29E, WM

T3N., R 29E., W.M.



-  Primary Cert. 76715 & Supplemental Cert. 79439
-  Certificate 82441
-  Certificate 82441 not involved in this transfer

 Control Valve

RECEIVED

MAY 05 2008

WATER RESOURCES DEPT
 SALEM, OREGON



0 1320 2640



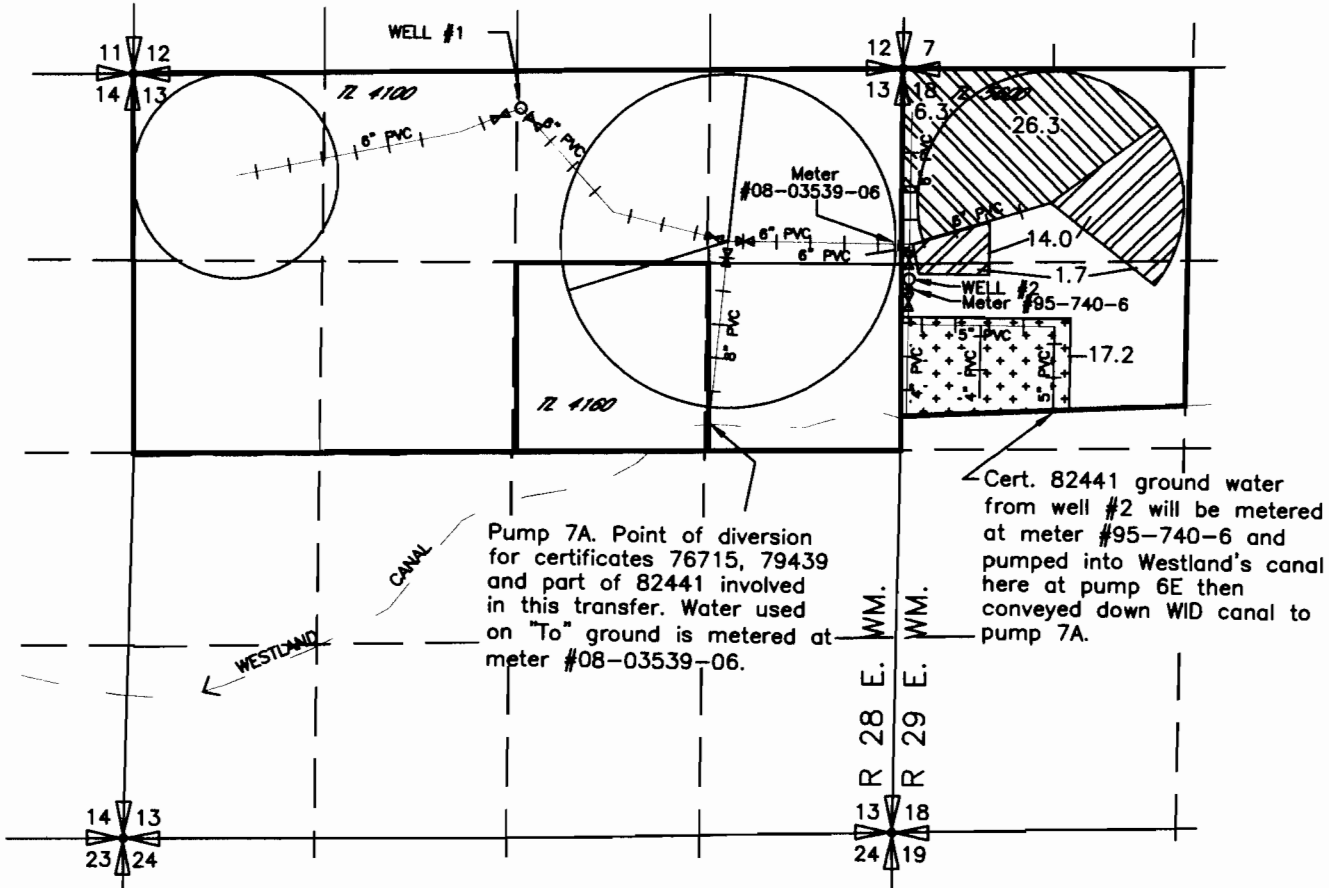
SCALE IN FEET

NOTE: THE PURPOSE OF THIS MAP IS TO IDENTIFY THE APPROXIMATE LOCATION OF THE WATER RIGHT. IT IS NOT INTENDED TO PROVIDE INFORMATION RELATIVE TO THE LOCATION OF PROPERTY OWNERSHIP BOUNDARY LINES.

T-10611

2008 WESTLAND IRRIGATION DISTRICT
 TEMPORARY TRANSFER – AMENDED 4-29-08
 DOUBLE M RANCH, INC – DOUBLE M RANCH INC
 CERTIFICATES 76715, 79439 & 82441
 T3N, R 28 & 29 E, W.M.

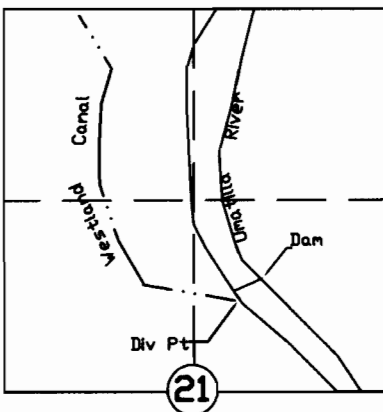
TO






WELL #1 Located 270' South & 2540' West from the NE corner section 13, T3N, R28E, WM

WELL #2 Located 1450' South & 3160' West from the N 1/4 corner section 18, T3N, R29E, WM

T3N., R 29E., W.M.



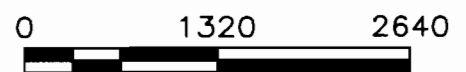
-  Primary Cert. 76715 & Supplemental Cert. 79439
-  Certificate 82441
-  Certificate 82441 not involved in this transfer

 Control Valve

RECEIVED

MAY 05 2008

WATER RESOURCES DEPT
 SALEM, OREGON



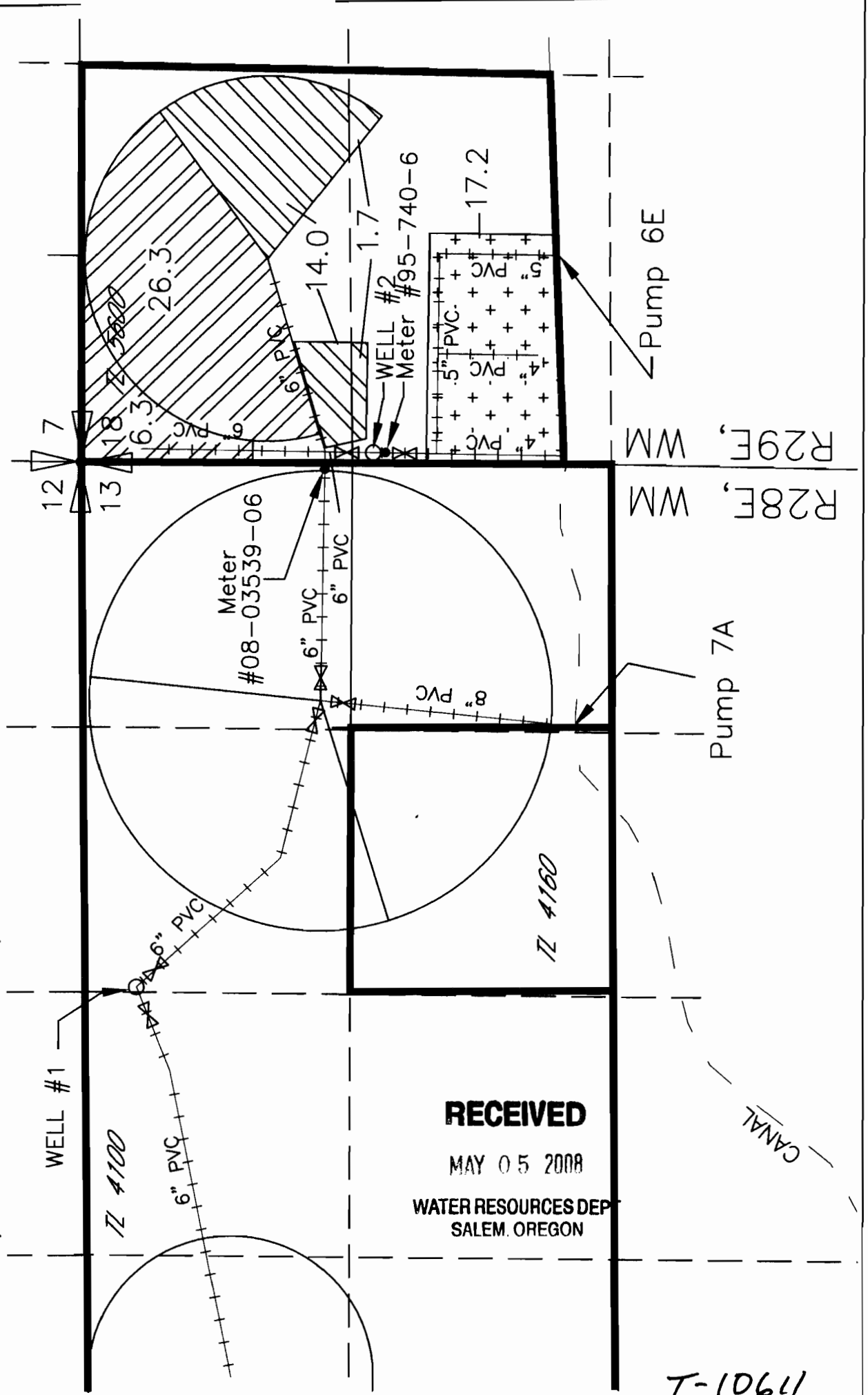
SCALE IN FEET

NOTE: THE PURPOSE OF THIS MAP IS TO IDENTIFY THE APPROXIMATE LOCATION OF THE WATER RIGHT. IT IS NOT INTENDED TO PROVIDE INFORMATION RELATIVE TO THE LOCATION OF PROPERTY OWNERSHIP BOUNDARY LINES.

T-10611

Double M Ranch, Inc.
 Amended 4-29-08 Distribution
 System Map for 2008 W.I.D.
 Temporary Transfer.
 T3N, R 28 & 29 E, W.M.

NOTE: THE PURPOSE OF THIS MAP IS TO IDENTIFY THE APPROXIMATE LOCATION OF THE WATER RIGHTS & WATER DELIVERY SYSTEM. IT IS NOT INTENDED TO PROVIDE INFORMATION RELATIVE TO THE LOCATION OF PROPERTY OWNERSHIP BOUNDARY LINES.



RECEIVED

MAY 05 2008

WATER RESOURCES DEPT
 SALEM, OREGON

T-10611