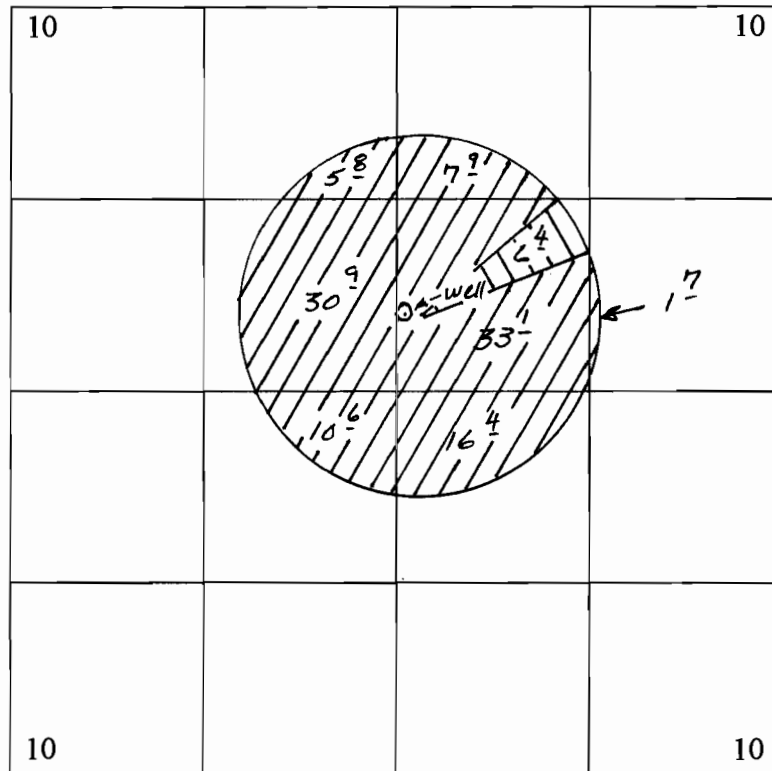



T 27 S, R 15 E
SECTION 10
TAX LOT 1300

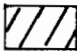
“TO”



Scale - 1" = 1320'

Proposed POA - 2130' S & 2715' E from the NW Corner, Sec 10
Being in the SW¹/₄ NE¹/₄, Section 10.

C 80220 - G-10326 

C 80221 - G-9974 


RECEIVED


MAY 01 2008

WATER RESOURCES DEPT
SALEM, OREGON

Township 24 South. Range 18 East. W.M.

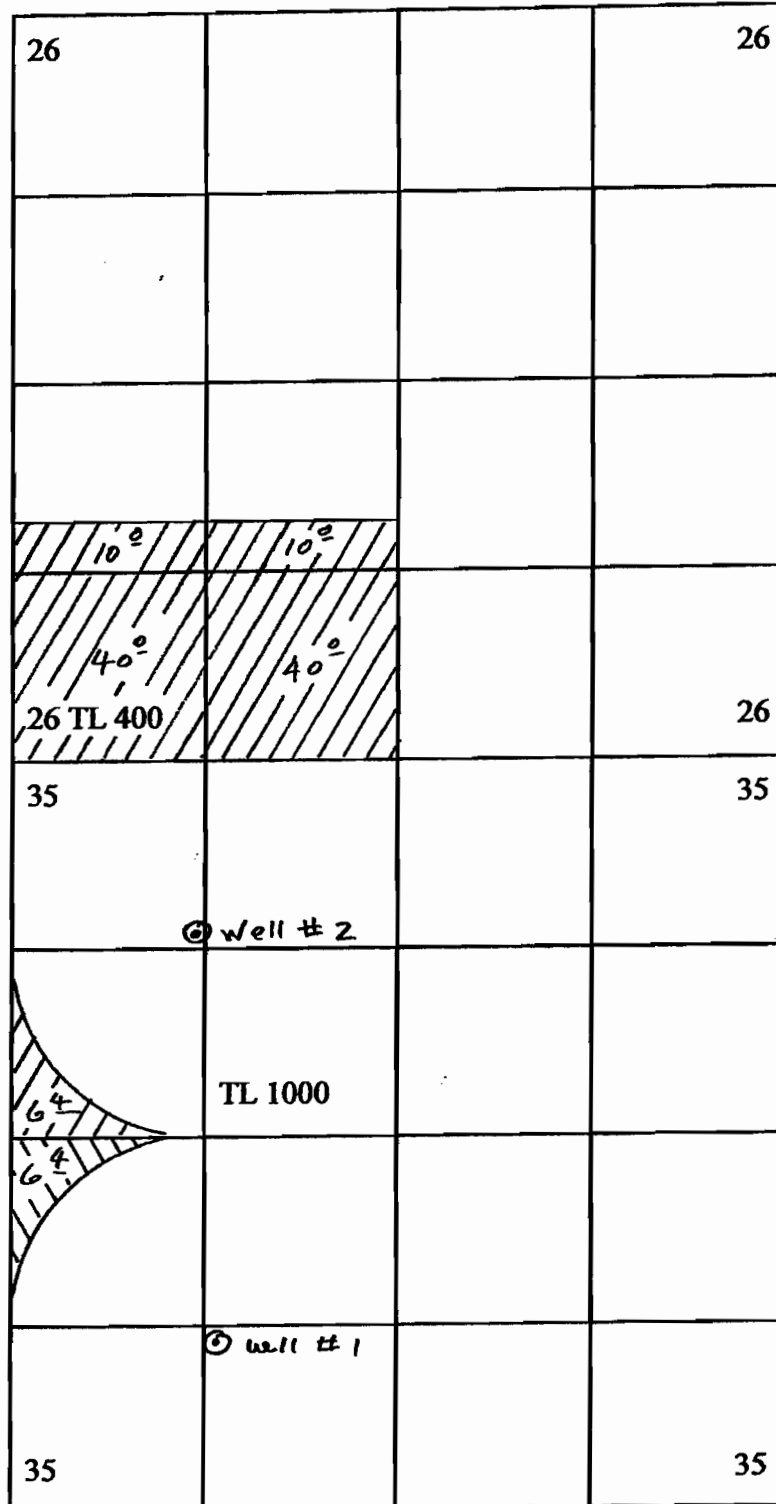
Transferred
from

 - G-9974

 - G-10326

Well # 1 - Located
SE 1/4 SW 1/4, SEC 35.
T 24S, R 18E, W.M.;
1250' N & 1320' E from the
SW corner, SEC 35.

Well # 2 - Located
NW 1/4 NW 1/4, SEC 35,
T 24S, R 18E, W.M.;
1200' S & 1250' E from the
NW corner, SEC 35.



Scale - 1" = 1320'

RECEIVED

MAY 01 2008

WATER RESOURCES DEPT
SALEM, OREGON

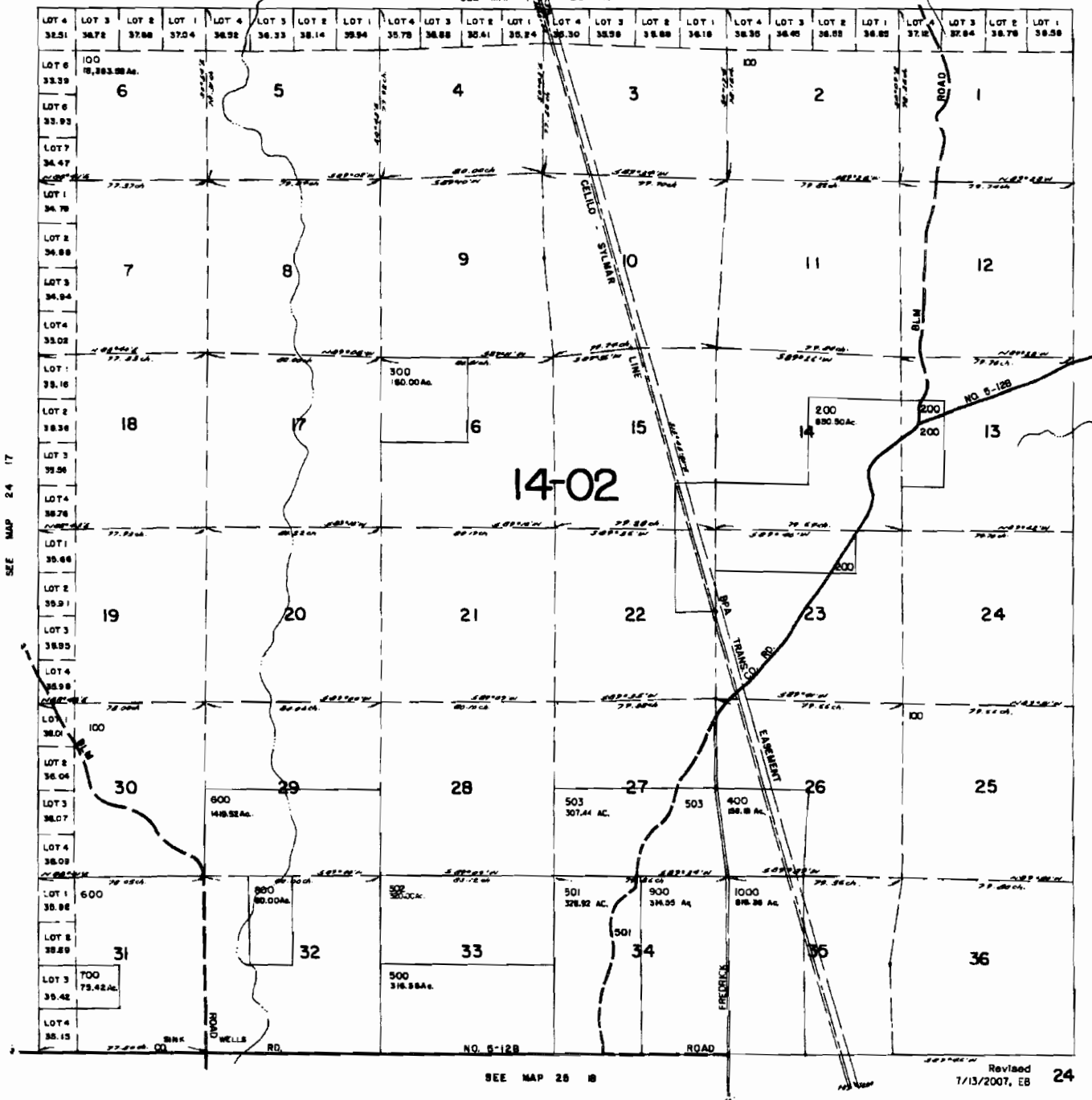
T.24S. R.18E. W.M.
LAKE COUNTY

24 18

THIS MAP WAS PREPARED FOR
ASSESSMENT PURPOSE ONLY

SEE MAP 23 18 2000'

SCALE IN FEET
0 1000 2000 4000



SEE MAP 24 17

SEE MAP 24 18

Revised 7/15/2007, EB 24 18

RECEIVED

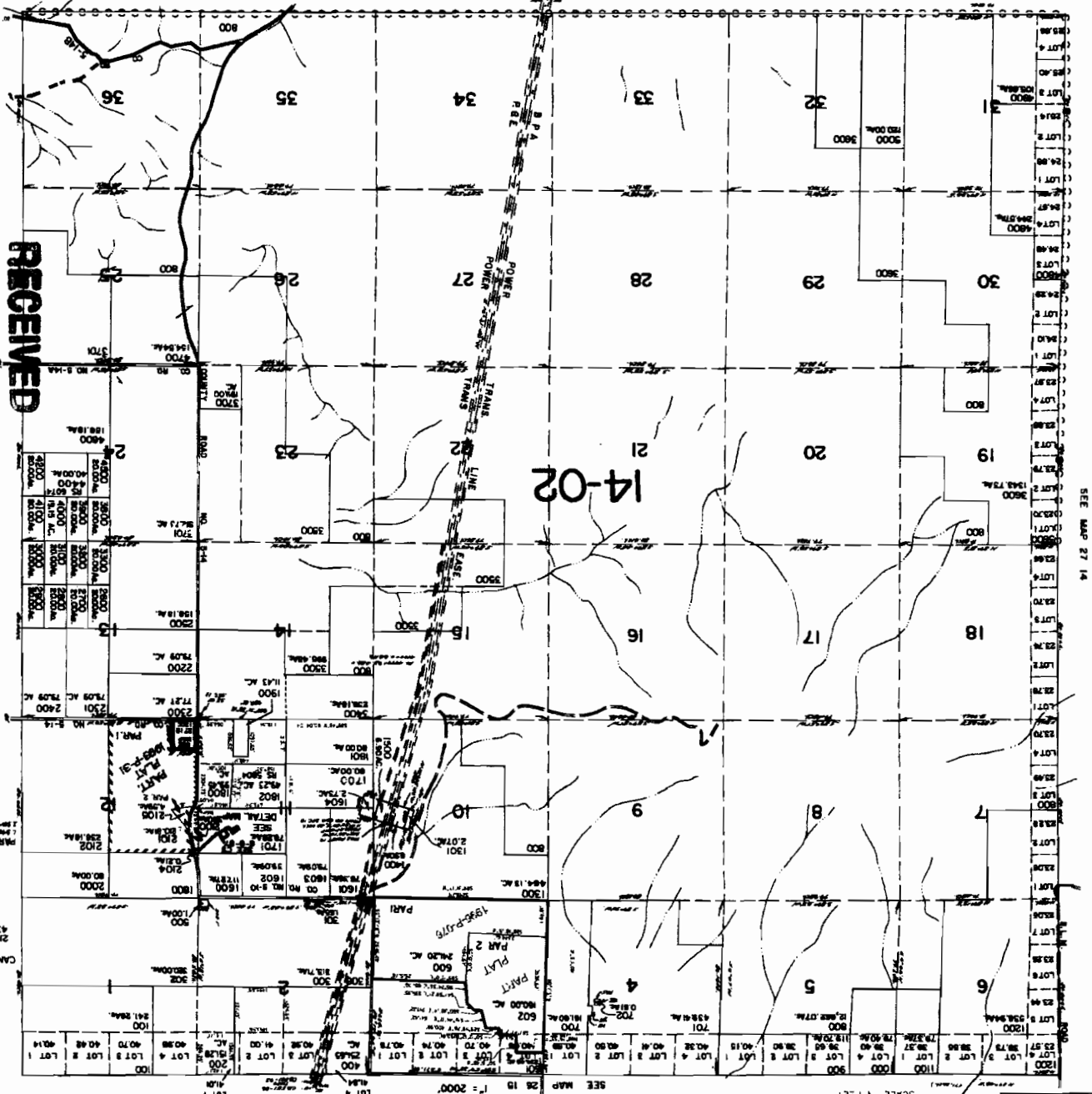
MAY 01 2008

WATER RESOURCES DEPT
SALEM, OREGON

THIS MAP WAS PREPARED FOR ASSESSMENT PURPOSE ONLY

SCALE 1"=1000'

1.27S. R.15E. W.M. LAKE COUNTY



SEE MAP 28 15

SEE MAP 27 14

SEE MAP 28 15

SEE MAP 27 16

RECEIVED

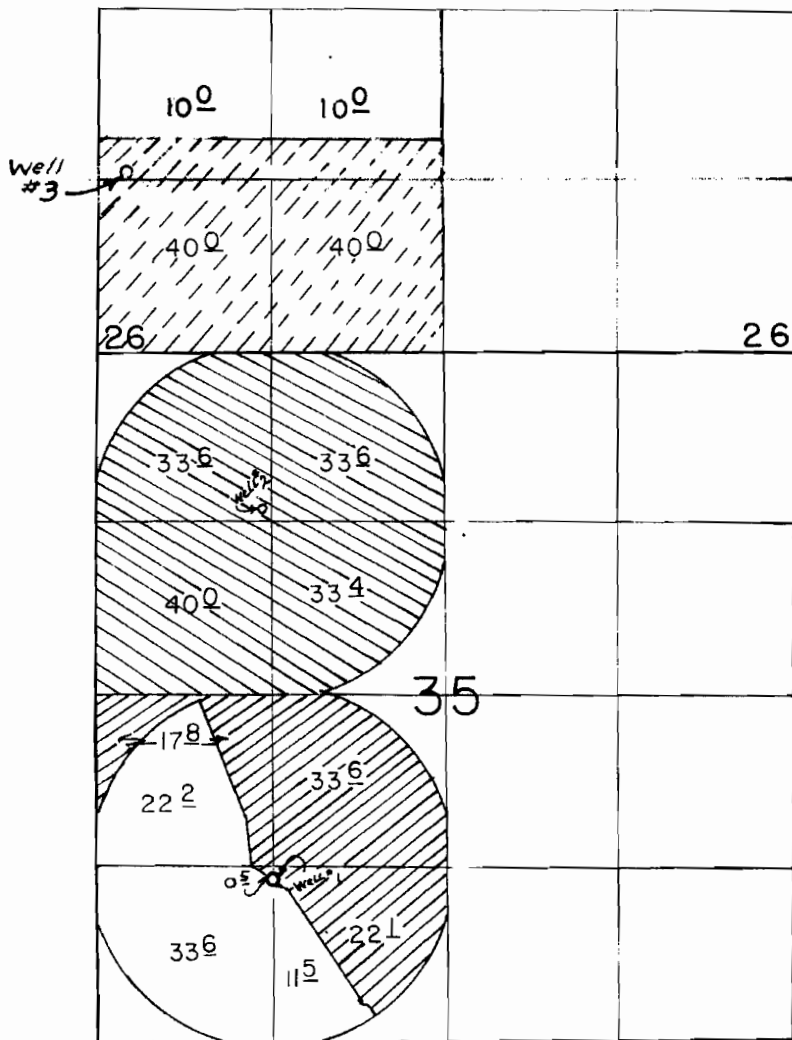
MAY 01 2008

27 15 & INDEX
Revised 7/6/2006, D.L.M.

WATER RESOURCES DEPT
SALEM, OREGON

27 15 & INDEX

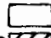

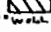
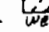
T.24S, R.18E., W.M.



WELL 1, 1250' N & 1320' E FROM SW COR. OF SEC 35.
 WELL 2, 1200' S & 1250' E FROM NW COR. OF SEC 35.
 WELL 3, 1360' N & 200' E FROM SW COR. OF SEC 26.

SCALE: 1" = 1320'

FINAL PROOF SURVEY
 UNDER

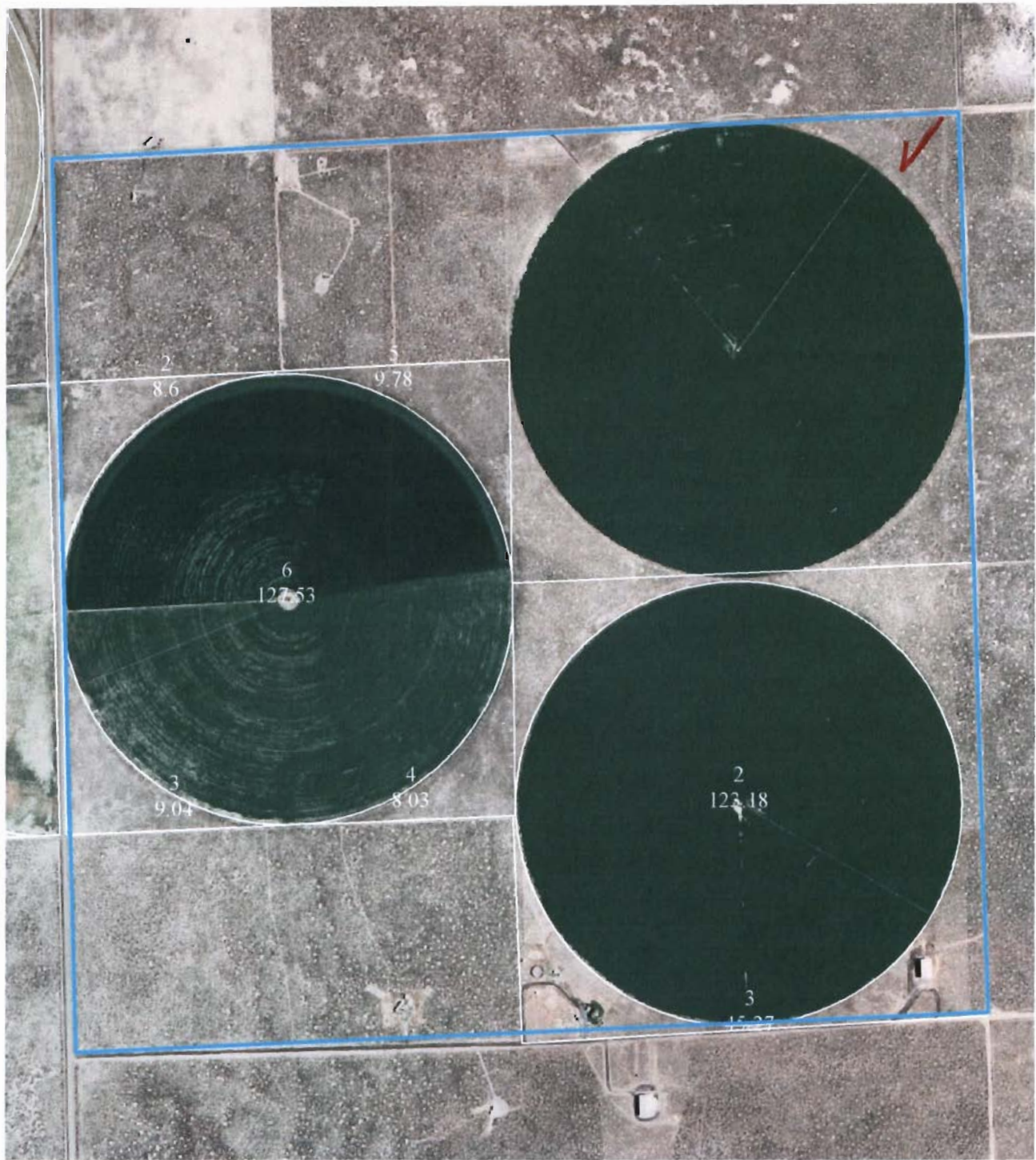
CERT. NO. 53148  Well 1
 G-11234 G-10326  Well 2
 Application No. G-10366 Permit No. G-9974  Well 3  Well 4
 IN NAME OF

HAROLD A. BROWN

Surveyed MAY 8 19 97, by R.M. SUTTERFIELD

WATER RIGHTS
 5/13/03 DC
 Revised 7/23/02
 R.M.S.

P.T.S. 11-7-97



**USDA / Farm Service Agency
Lake County**

Wetland Determination Identifiers

- Restricted Use
- ▼ Limited Restrictions
- Exempt from Conservation Compliance Provisions



T25S, R18, Section 17, 2006, SCALE 1:10,270

Disclaimers:

- * Wetland identifiers do not represent the size, shape or specific determination of the area. Refer to your original determination (CPA-026 and attached maps) for exact wetland boundaries and determinations, or contact NRCS.
- * This acreage is for FSA program purposes only. No warranty is made for any other use.

RECEIVED

MAY 01 2008

**WATER RESOURCES DEPT
SALEM, OREGON**