

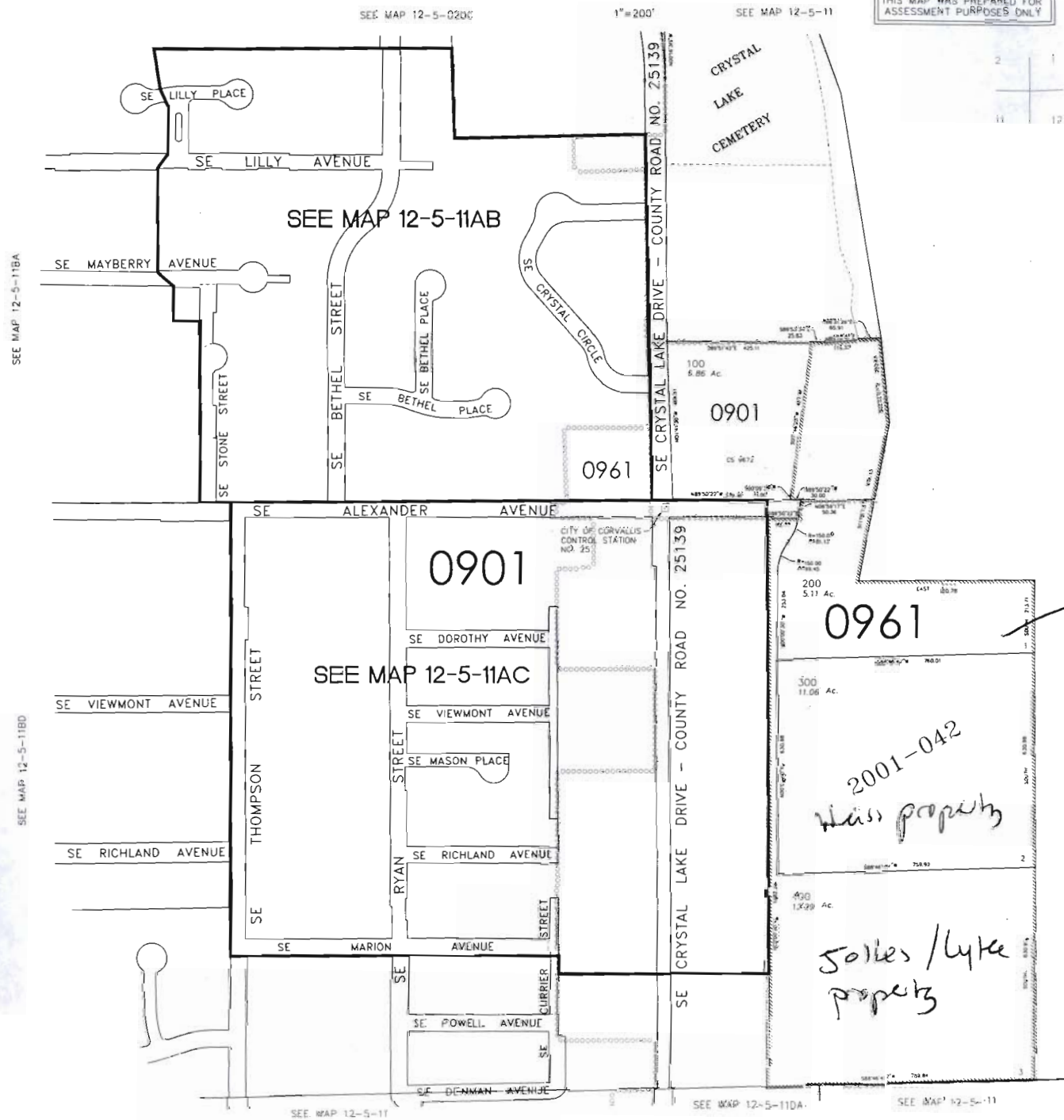
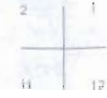


NE1/4, SECTION 11, T12S, R5W, W.M.  
BENTON COUNTY

12-5-11A  
& INDEX  
CORVALLIS

THIS MAP WAS PREPARED FOR  
ASSESSMENT PURPOSES ONLY

REV. 09-29-2005  
CANCELLED  
201



SEE MAP 12-5-11AB

SEE MAP 12-5-11AC

*Plants/Beaver  
Property*

*2001-042  
Miss property*

*Solles / Lyke  
Property*

12-5-11A  
& INDEX  
CORVALLIS

**RECEIVED**  
MAY 06 2008  
WATER RESOURCES DEPT  
SALEM, OREGON

SEE MAP 12-5-11BA

SEE MAP 12-5-11BD

SEE MAP 12-5-020C

1"=200'

SEE MAP 12-5-11

SEE MAP 12-5-11

SEE MAP 12-5-11DA

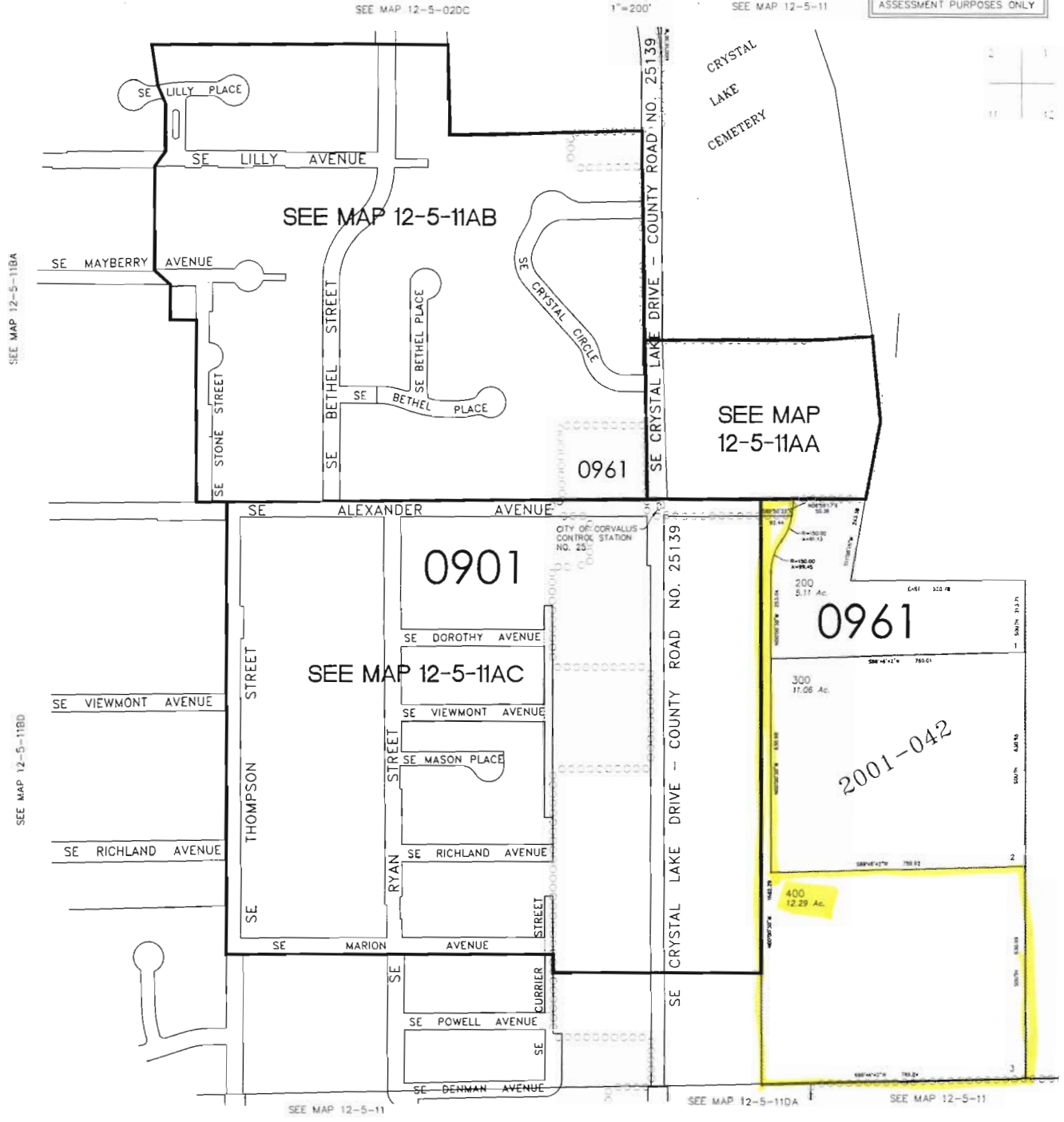
SEE MAP 12-5-11

NE1/4, SECTION 11, T12S, R5W, W.M.  
BENTON COUNTY

THIS MAP WAS PREPARED FOR  
ASSESSMENT PURPOSES ONLY

12 5 11A  
& INDEX  
CORVALLIS

REV: 01-09-2008  
CANCELLED:  
100  
201  
500  
600



SEE MAP 12-5-11

12 5 11A  
& INDEX  
CORVALLIS

SECTION 11, T12S, R5W, W.M.  
BENTON COUNTY

THIS MAP WAS PREPARED FOR  
ASSESSMENT PURPOSES ONLY

1"=400'

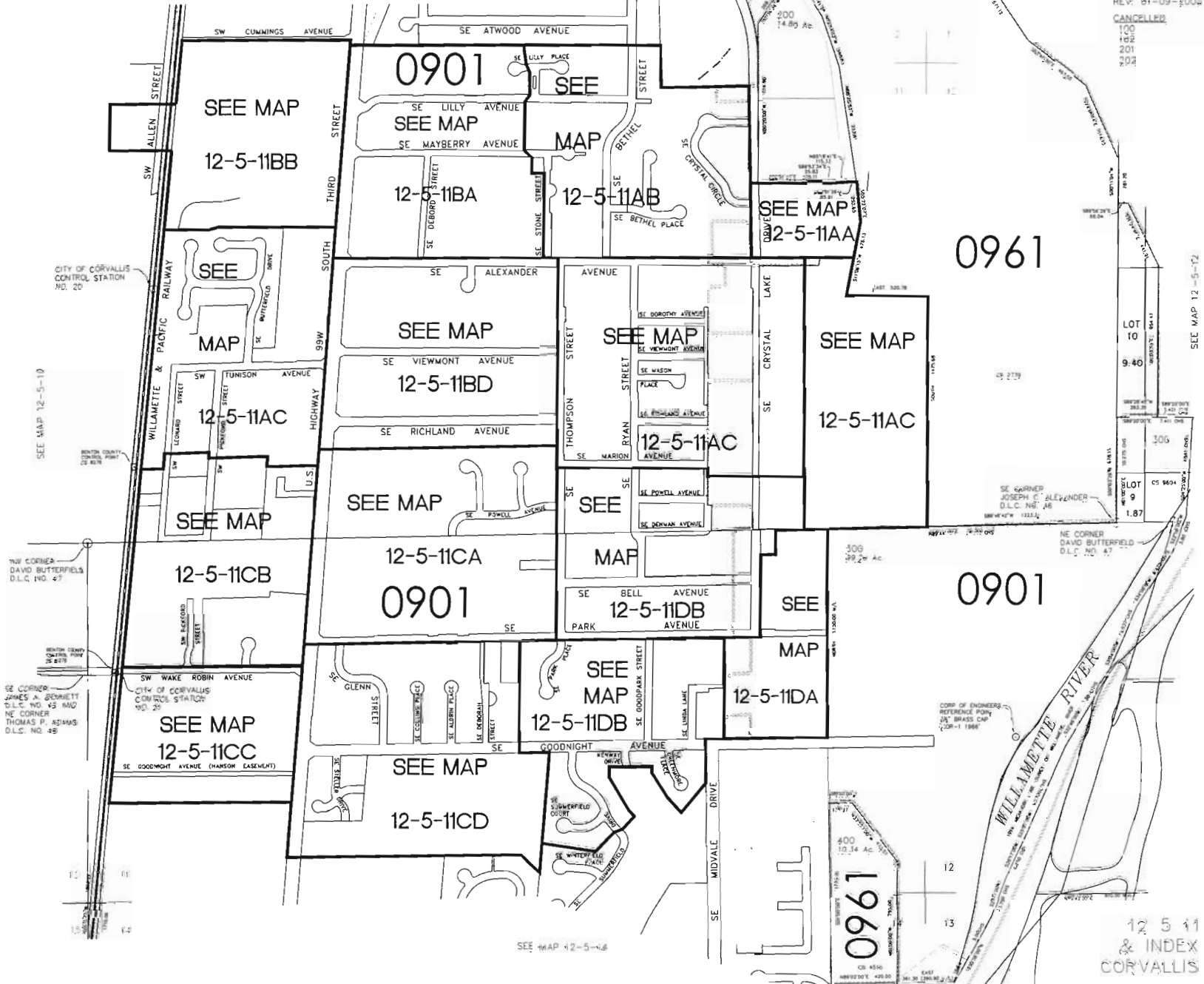
SEE MAP 12-5-02

12 5 11  
& INDEX  
CORVALLIS

REV: 01-09-2008

CANCELLER

100  
102  
201  
202



SEE MAP 12-5-10

SW CORNER  
DAVID BUTTERFIELD  
D.L.C. NO. 47

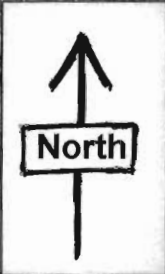
SE CORNER  
JAMES A. BOWNETT  
D.L.C. NO. 43 AND  
NE CORNER  
THOMAS P. ASHARS  
D.L.C. NO. 45

SEE MAP 12-5-16

SEE MAP 12-5-12

12 5 11  
& INDEX  
CORVALLIS

T. 12 South, R. 5 West, WM



2 1  
11 12

11 12  
14 13

Approx  
Scale

1" = 1000'

Approx  
Scale

$$1'' = 363'$$

1562 SE Alexander Ave, Corvallis, OR 97333

Well L37147

Beaver/Plants  
property

Weiss property

claim GR 1888

claim GR 1887

Willamette Park

portion of GR 1887  
to be reassigned

Jolles/  
Lytle  
property

old well  
5179



RECEIVED

MAY 06 2008

WATER RESOURCES DEPT  
SALEM, OREGON

Southeast Thompson Street

Southeast Ryan Street

Southeast Crystal Lake Drive

Southeast Bell Avenue

Southeast Park Ave

Willamette Park/Willamette Park Road

© 2008 Tele Atlas

© 2008 Europa Technologies

Google

attachment 3