



Cascade Timberlands (Oregon), LLC

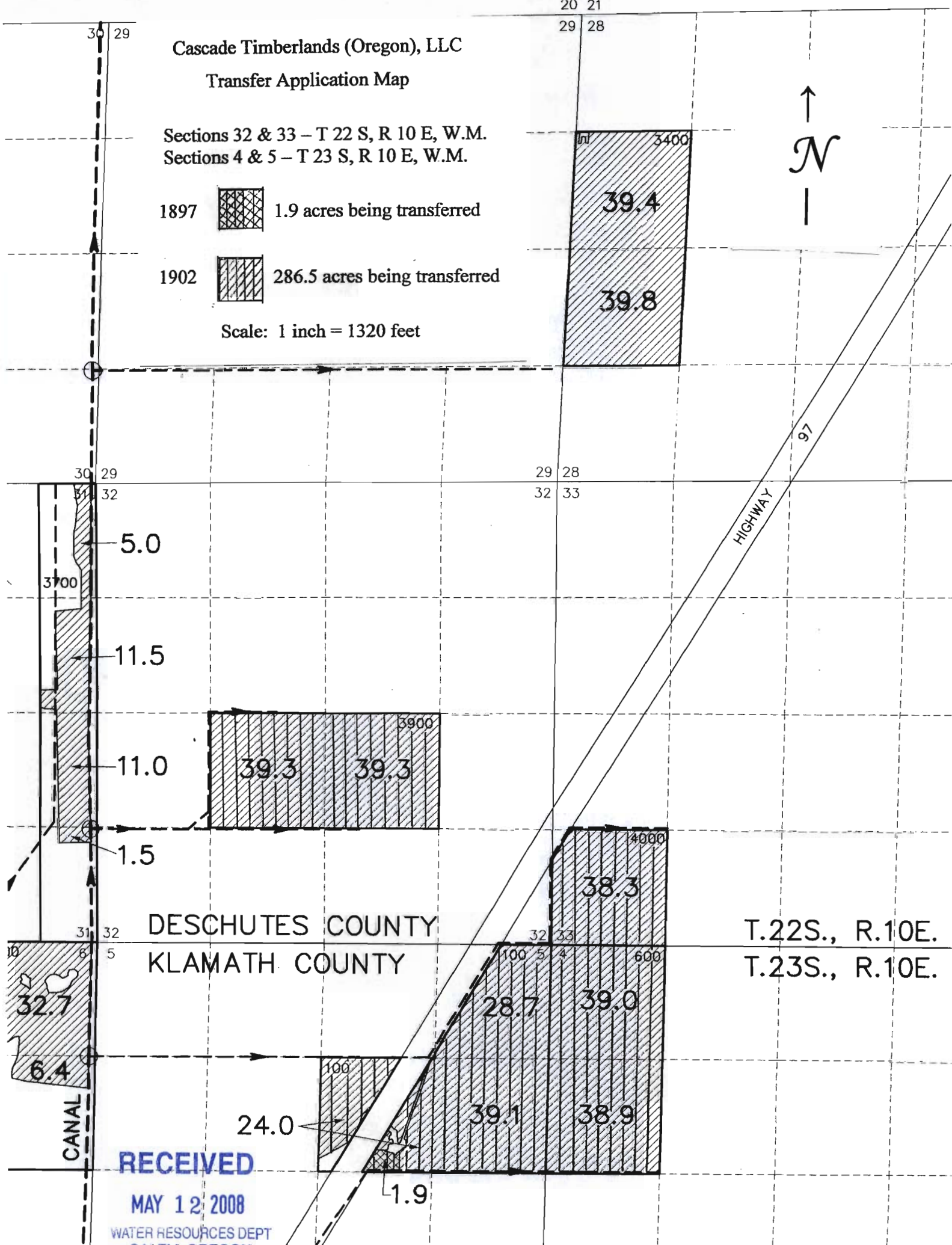
Transfer Application Map

Sections 32 & 33 – T 22 S, R 10 E, W.M.  
Sections 4 & 5 – T 23 S, R 10 E, W.M.

1897  1.9 acres being transferred

1902  286.5 acres being transferred

Scale: 1 inch = 1320 feet



DESCHUTES COUNTY  
KLAMATH COUNTY

T.22S., R.10E.  
T.23S., R.10E.

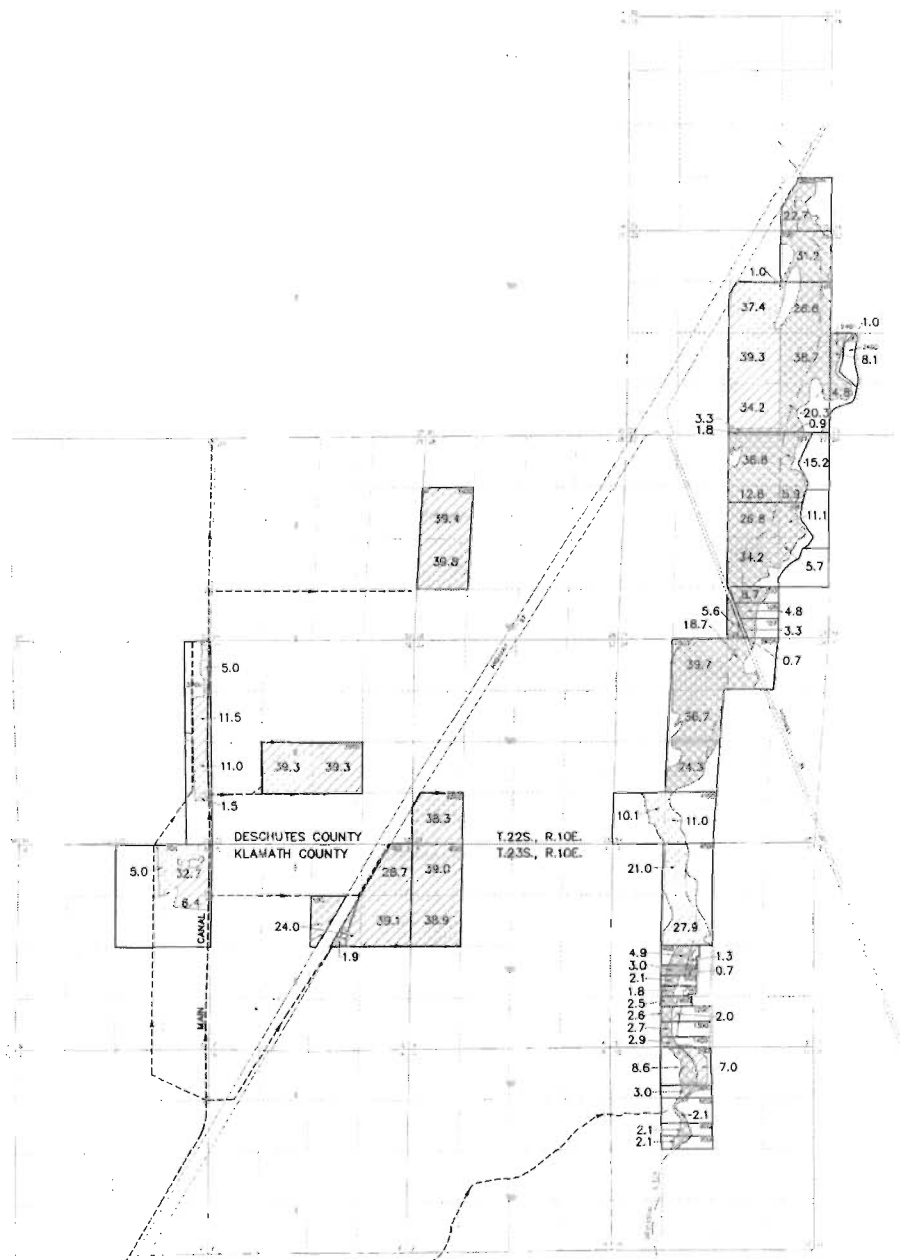
**RECEIVED**






MAY 12 2008

WATER RESOURCES DEPT  
SALEM, OREGON

# TOWNSHIP 22 & 23 SOUTH, RANGE 10 EAST, W.M.

LAPINE COOPERATIVE WATER ASSOCIATION  
WALKER BASIN



 NORTH  
 1897 RIGHTS  
 1900 RIGHTS  
 1902 RIGHTS  
 TAX LOT NUMBER



Foss Place 2007



Foss @ditch 2004

**RECEIVED**

**MAY 12 2008**

**WATER RESOURCES DEPT  
SALEM, OREGON**



Foss Place 2006



Green Prairie Ranch LLC  
Foss Place 2005

RECEIVED

MAY 12 2008

WATER RESOURCES DEPT  
SALEM, OREGON



Foss Place 2004



Eng Place 2005

**RECEIVED**

**MAY 12 2008**

**WATER RESOURCES DEPT  
SALEM, OREGON**



main Canal @ Foss & Homestead  
diversion Point 2003



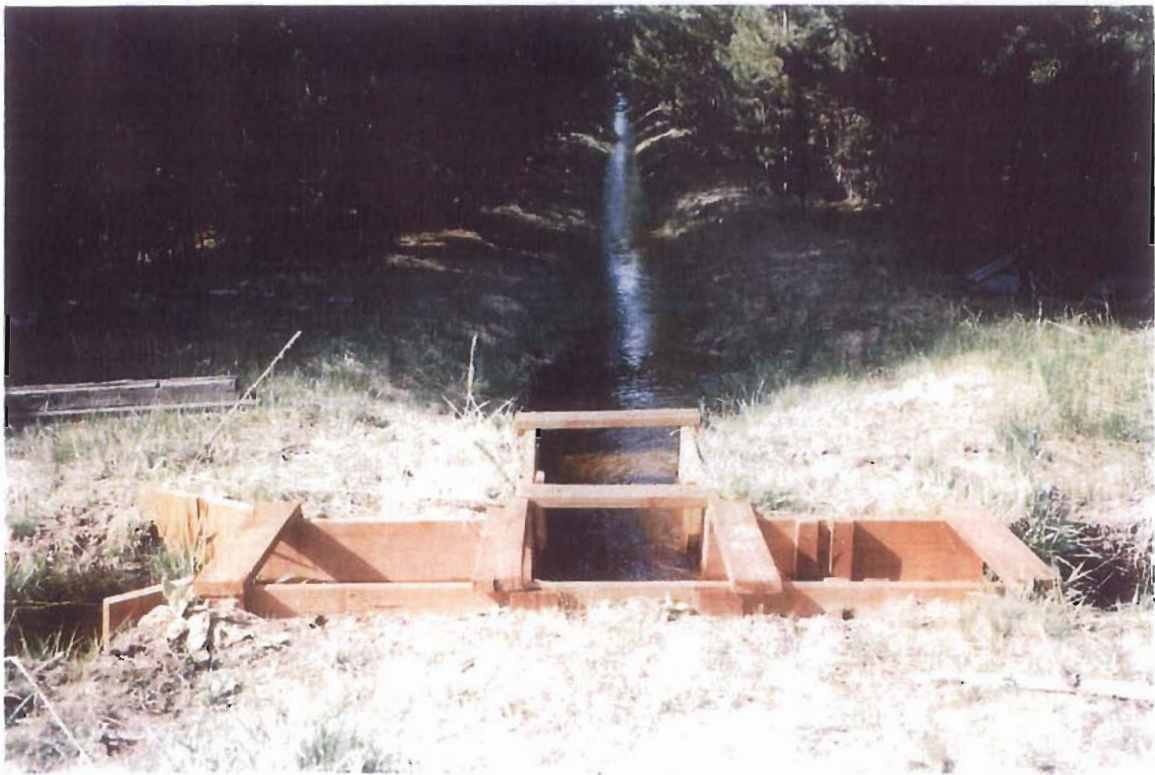
RECEIVED

MAY 12 2008

WATER RESOURCES DEPT  
SALEM, OREGON

Main Canal Diversion For the Foss  
& Homestead  
2003

N



W-

-E

Eng place diversion Box 2005  
water running North

→E



W/

Eng Place diversion Box 2005  
water running West & East

RECEIVED  
MAY 12 2009  
WATER RES  
SALEM, OREG



Foss  
Place  
ditch  
running  
north &  
then EAST  
2004



Diversion ditch  
to Foss gain  
EAST  
2003

**RECEIVED**

**MAY 12 2008**

**WATER RESOURCES DEPT  
SALEM, OREGON**





OUT

Eng Place  
ditch  
running  
out EAST

2007

W

E



Foss Place  
ditch running  
EAST

2006

RECEIVED

MAY 12 2008

WATER RESOURCES  
SALEM, OREGON



Foss Place  
2003  
Ditch running  
North & South



Foss Place  
2003  
Ditch running  
North & South  
East & West



Main  
Diversion  
Box for  
Homesite  
2007

RECEIVED

MAY 12 2008

WATER RESOURCES  
SALEM, OREGON



*Main Canal 2006*

<http://webmail@bendbroadband.com/attach.php?101-0007-0002.jpg> ~~BYODNHLec&mbx=INBOX&ch=arset=escaped\_unirede&uid...~~ 05/12/2008

RECEIVED

MAY 12 2008  
 WATER RESOURCES DEPT  
 SALEM, OREGON



*Main Canal 2006*

**RECEIVED**

**MAY 12 2008**

WATER RESOURCES DEPT  
SALEM, OREGON



**RECEIVED**  
**MAY 12 2008**  
 WATER RESOURCES DEPT  
 SALEM, OREGON

2007  
 DIVERSION GATE #4 BJB MAW Canal



**RECEIVED**

MAY 12 2008

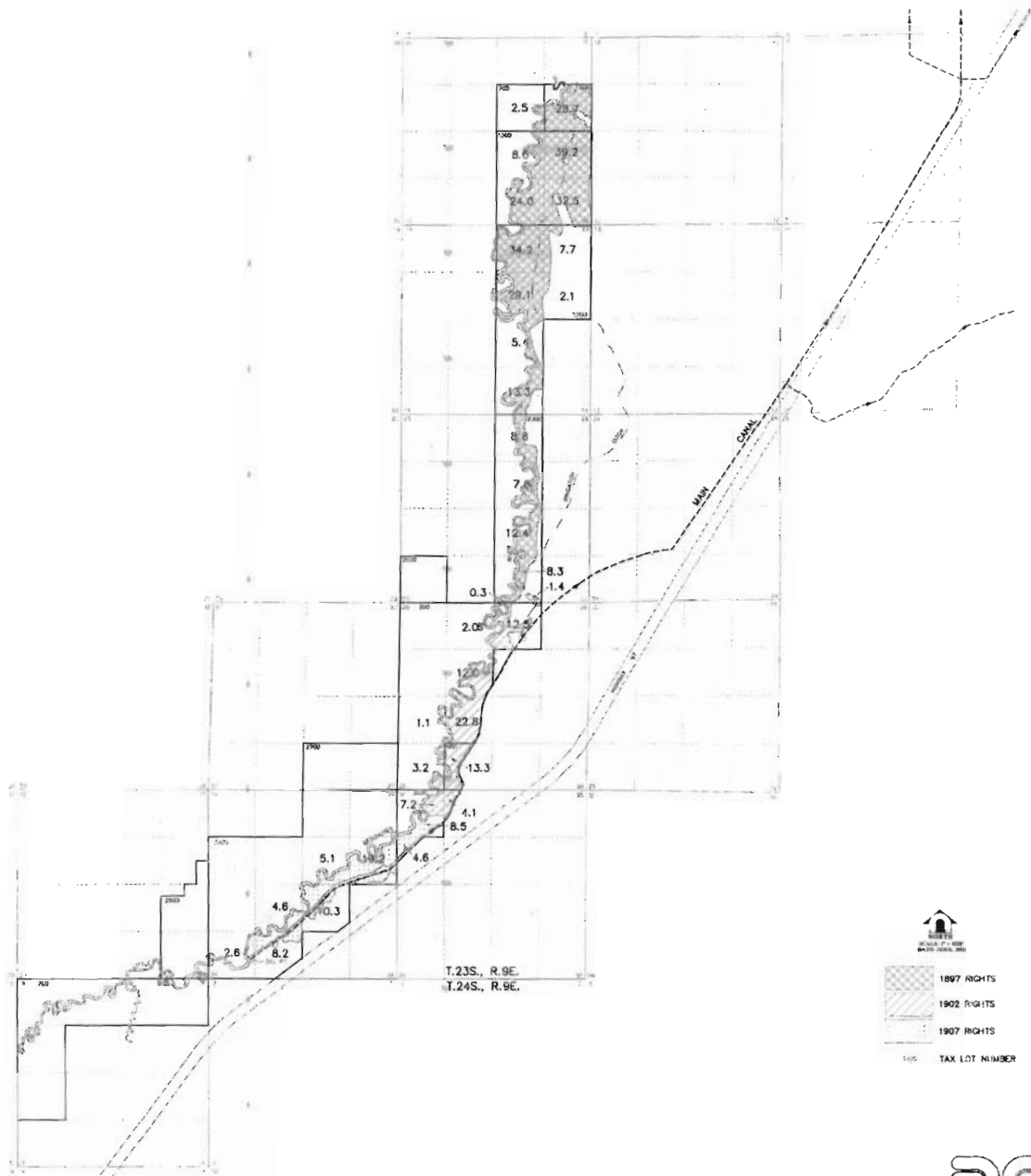
WATER RESOURCES DEPT  
SALEM, OREGON

2007

# 4 DIVERSION DITCH running EAST

# TOWNSHIP 23 & 24 SOUTH, RANGE 9 EAST, W.M.

LAPINE COOPERATIVE WATER ASSOCIATION  
WALKER BASIN



SCALE 1" = 100'

1897 RIGHTS  
1902 RIGHTS  
1907 RIGHTS

TAX LOT NUMBER

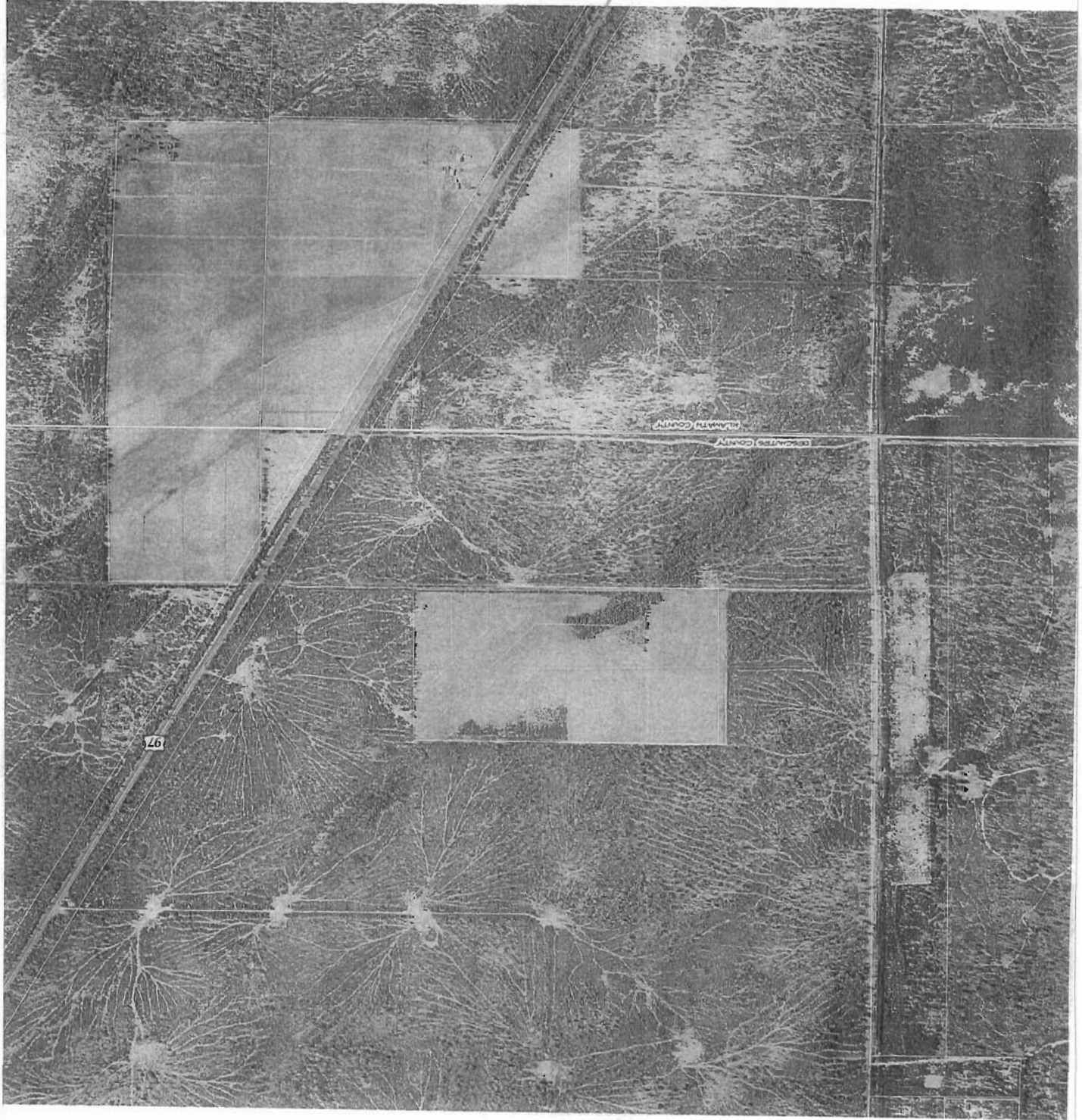
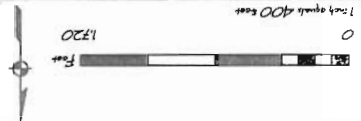
**DEA**  
DAVID EVANS AND ASSOCIATES, INC.  
109 W. WALL STREET, SUITE 102  
BEND, OREGON 97701 (503) 338-1844

WHPacific

CASCADE TIMBERLANDS  
RESEARCH AND HEALTH CONSIDERATIONS  
2005.5 METER ORTHOMOGRAPHY  
JULY 14, 2005

DRAWN BY: LAG  
LAST EDIT: 04.22.08  
APPROVED BY: \_\_\_\_\_  
PLOT DATE: 04.22.08

EX20



**RECEIVED**  
MAY 12 2008  
WATER RESOURCES DEPT  
SALEM, OREGON





RECEIVED

MAY 12 2008

WATER RESOURCES DEPT  
SALEM, OREGON