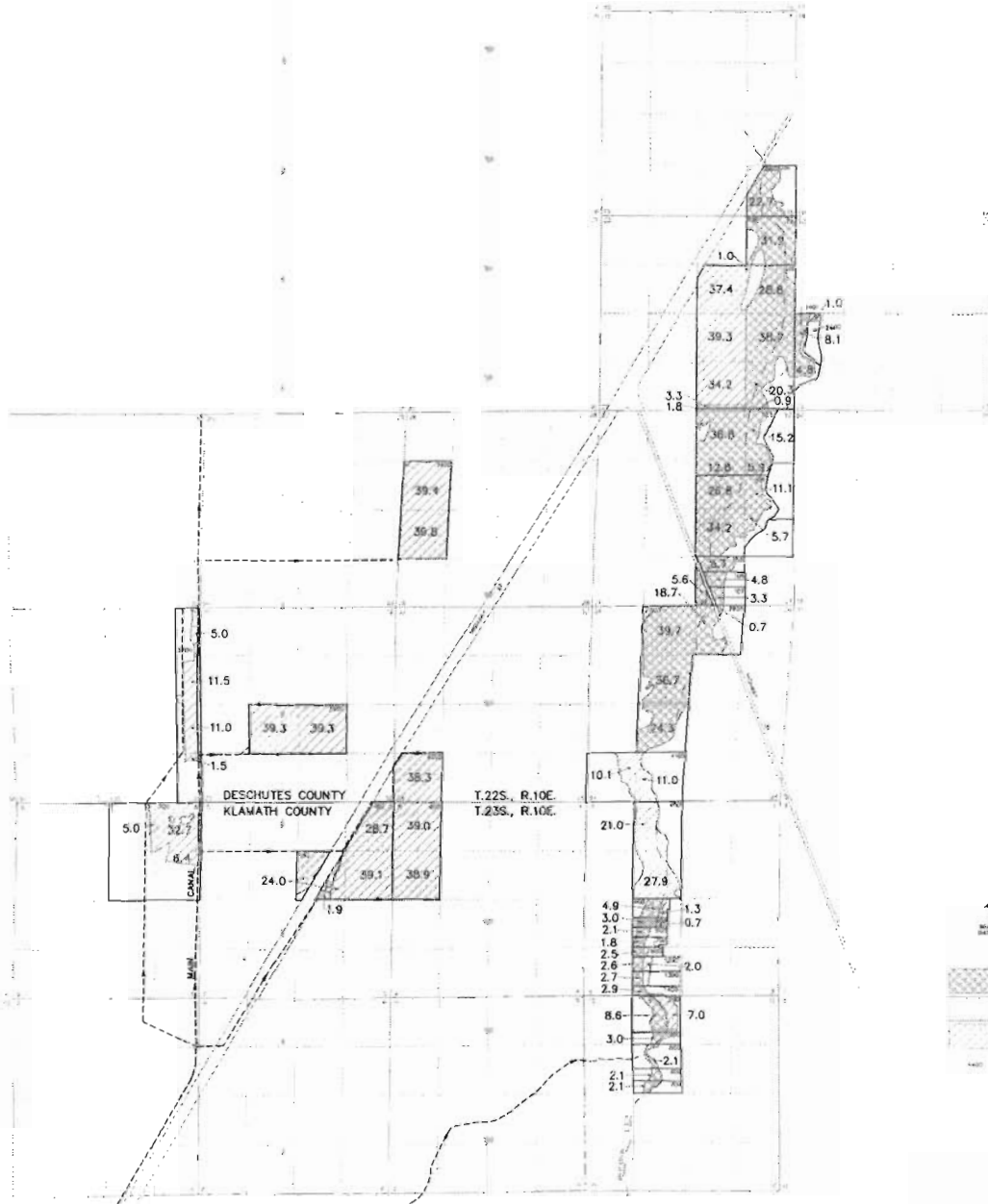



TOWNSHIP 22 & 23 SOUTH, RANGE 10 EAST, W.M.

LAPINE COOPERATIVE WATER ASSOCIATION
WALKER BASIN




 1897 RIGHTS
 1900 RIGHTS
 1902 RIGHTS
 TAX LOT NUMBER


 DAVID EKANS AND ASSOCIATES, INC.
 1001 NW BULL STREET, SUITE 402
 PALM SPRINGS, CALIF. 92262-2014



Foss Place 2007



Foss ditch 2004

RECEIVED

MAY 12 2008

WATER RESOURCES DEPT
SALEM, OREGON



Foss Place ~~2006~~ 2006



Green Prairie Ranch LLC
Foss Place 2005

RECEIVED

MAY 12 2008

WATER RESOURCES DEPT
SALEM, OREGON



RECEIVED

MAY 12 2008

**WATER RESOURCES DEPT
SALEM, OREGON**

2007

4 DIVERSION DITCH running EAST



Foss Place 2004



Eng Place 2005

RECEIVED

MAY 12 2008

WATER RESOURCES
SALEM, OREGON



main CANAL @ Foss & Homstedel
DIVERSION POINT 2003



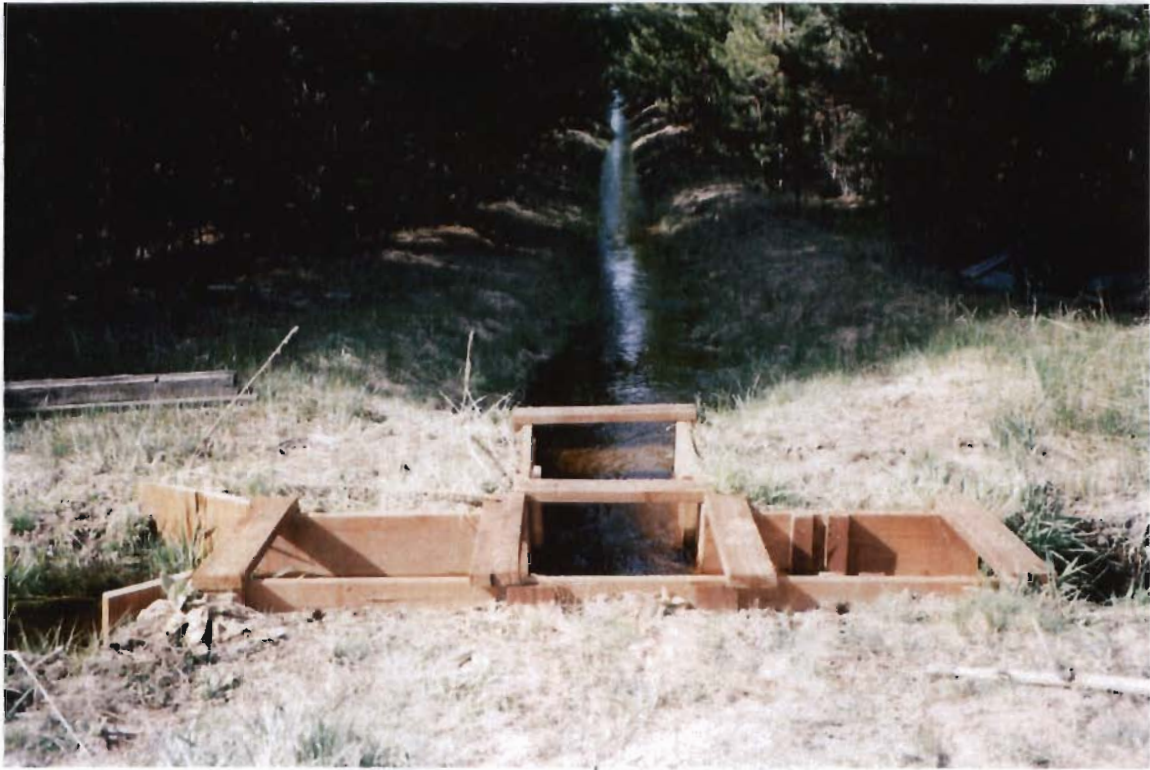
Main Canal Diversion For the Foss
& Homestead
2003

RECEIVED

MAY 12 2008

WATER RESOURCES DEPT
SALEM, OREGON

N



W-

-E

Eng place diversion Box 2005
water running North



→E

RECEIVED

MAY 12 2008

WATER RESOURCES DEPT
SALEM OREGON

Eng Place diversion Box 2005
water running West & East



Foss
PLACE
ditch
running
north &
then EAST
2004



DIVERSION ditch
to Foss going
EAST
2003

RECEIVED

MAY 12 2008

WATER RESOURCES DEPT
SALEM, OREGON



OUT

Eng Place
ditch
running
west EAST

2007



W

E

Foss Place
ditch running
East

2006

RECEIVED

MAY 12 2008

WATER RESOURCES DEPT
SALEM, OREGON

W



Foss Place
2003
Ditch running
North & South

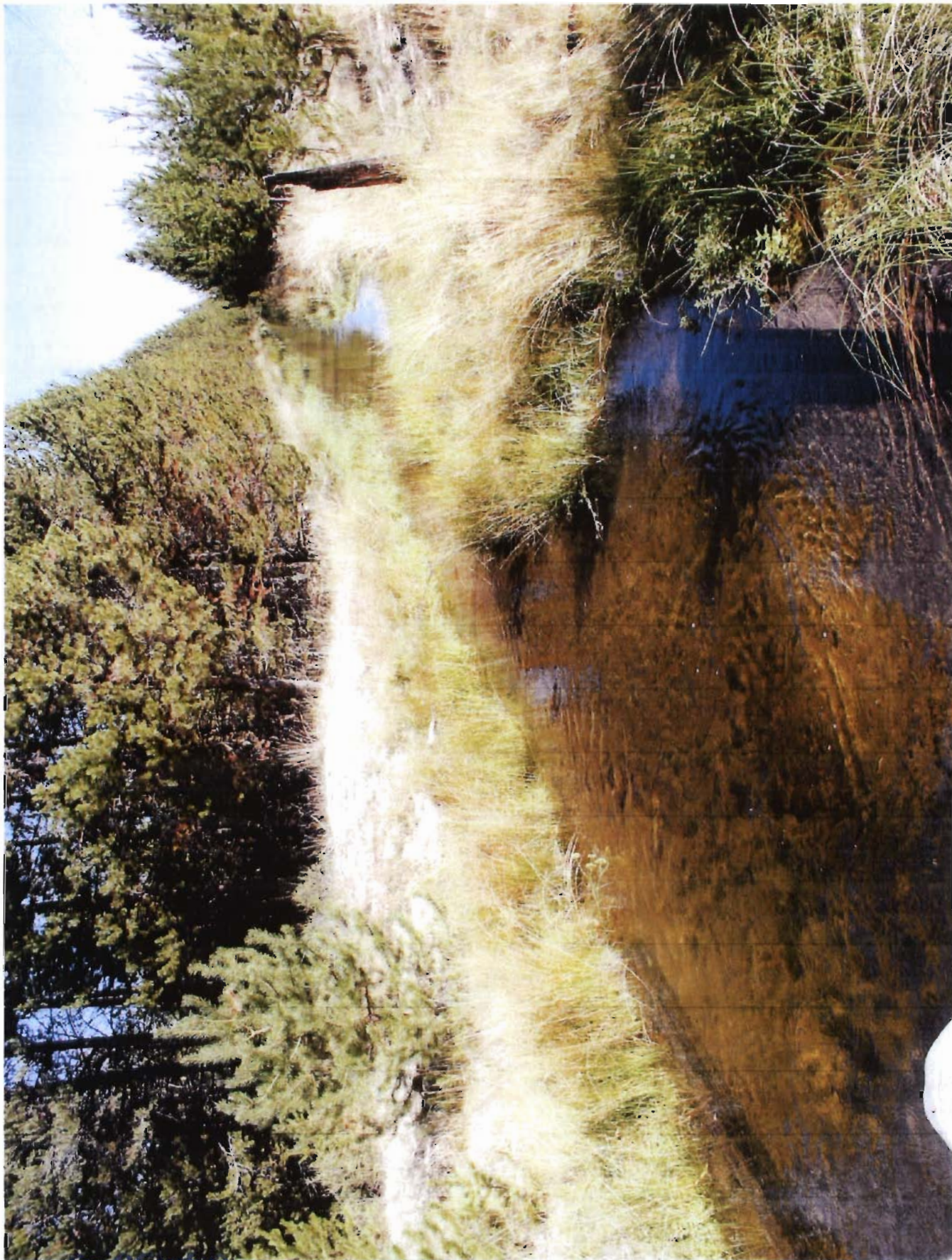


Foss Place
2003
Ditch running
North & South
East & West



Main
Diversion
Box for
Homestead
2007

RECEIVED
MAY 12 2008
WATER RESOURCES
SALEM, OREGON



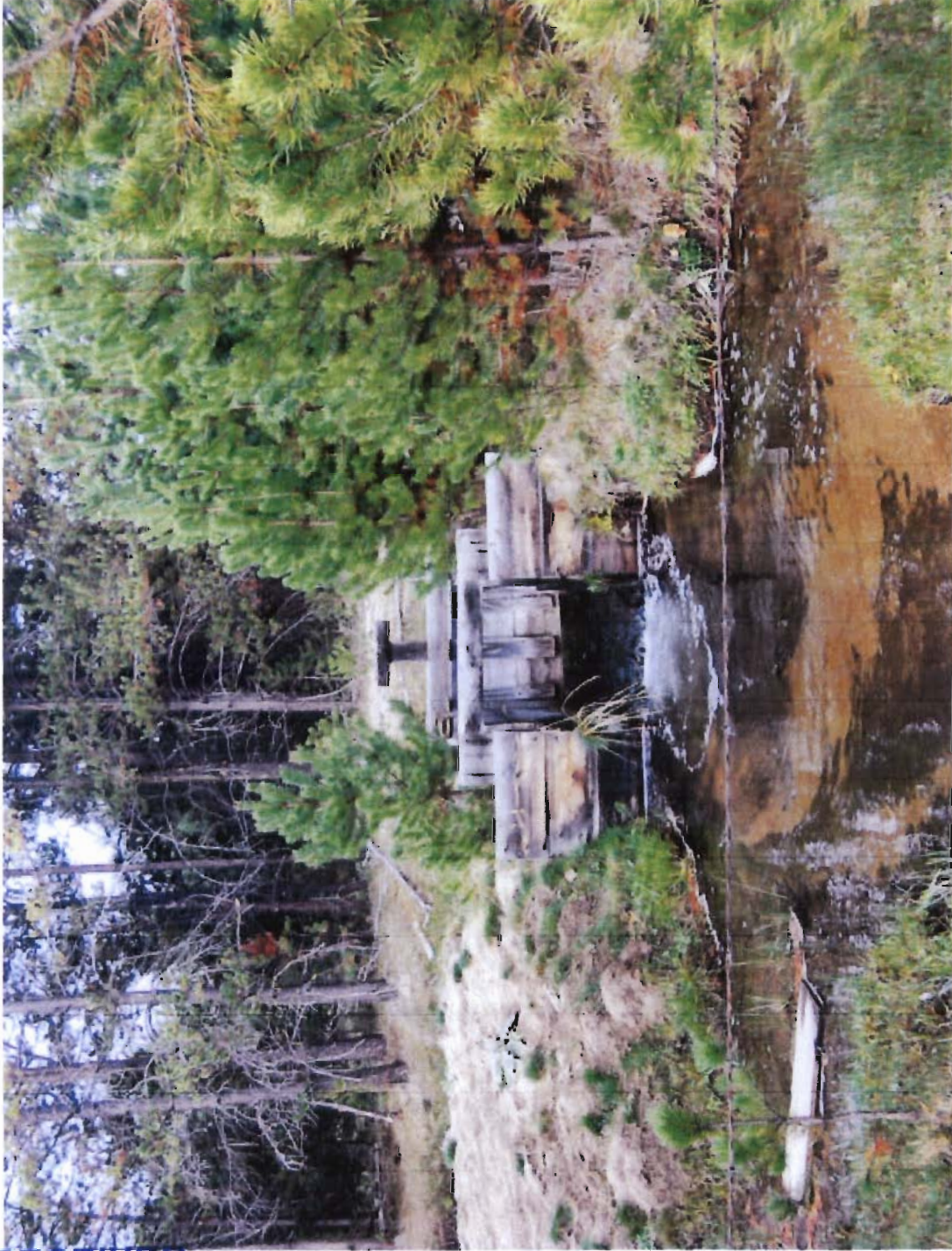
Main Canal 2006

RECEIVED

MAY 12 2008

WATER RESOURCES DEPT
SALEM, OREGON

<http://weemai:beadbroa...> ~~attach/P1010027~~ ~~COIN~~ ~~BY~~ ~~CH~~ ~~ILL~~ ~~er~~ ~~&~~ ~~mb~~ ~~er~~ ~~IN~~ ~~NO~~ ~~IT~~ ~~ch~~ ~~an~~ ~~ser~~ ~~es~~ ~~cap~~ ~~ed~~ ~~un~~ ~~re~~ ~~ed~~ ~~un~~ ~~id~~ ~~...~~ ~~62472028~~



2007
 DIVERSION GATE #4 BJB MAIN CANAL

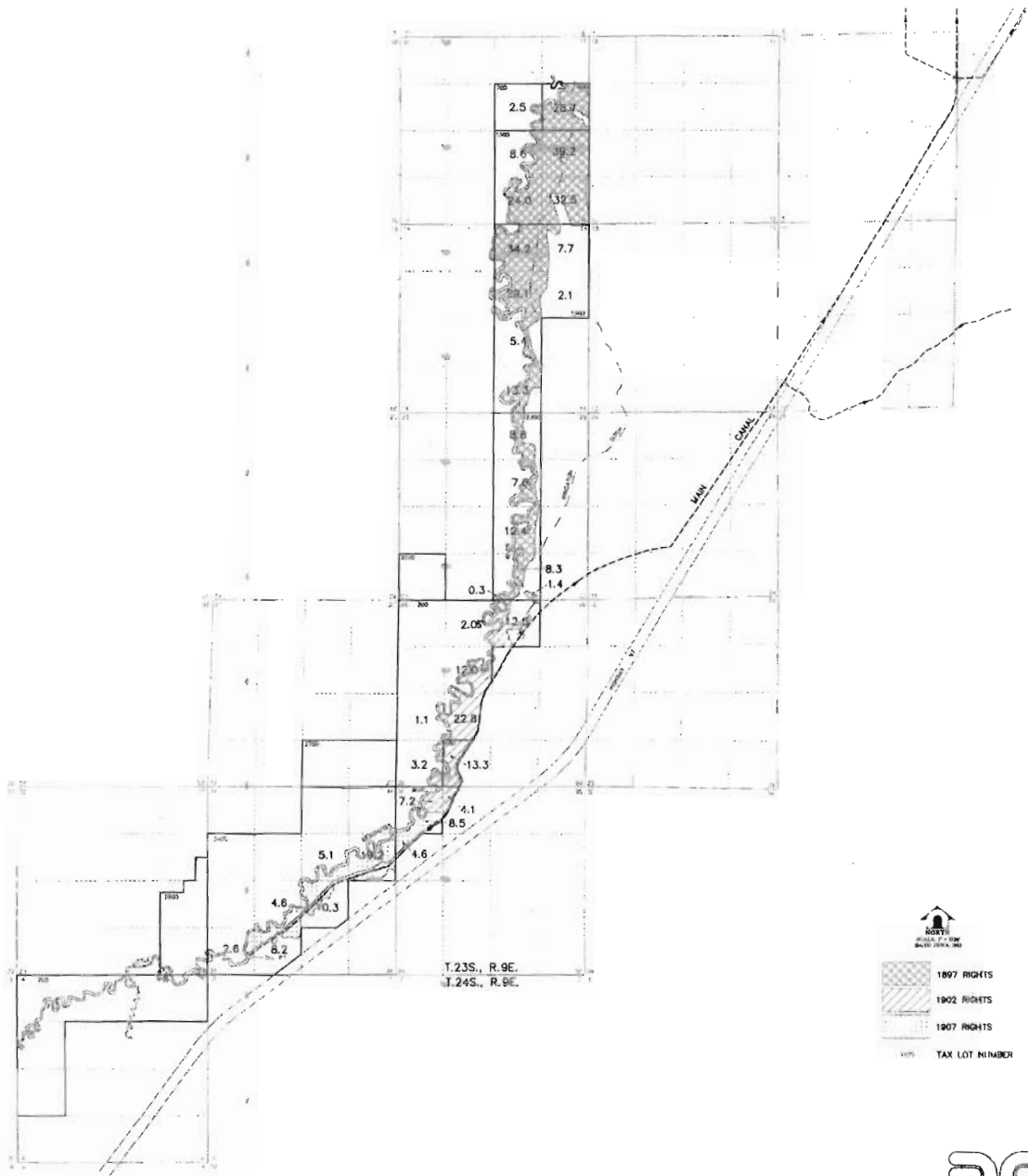
RECEIVED

MAY 12 2008

WATER RESOURCES DEPT
 OREGON

TOWNSHIP 23 & 24 SOUTH, RANGE 9 EAST, W.M.

LAPINE COOPERATIVE WATER ASSOCIATION WALKER BASIN

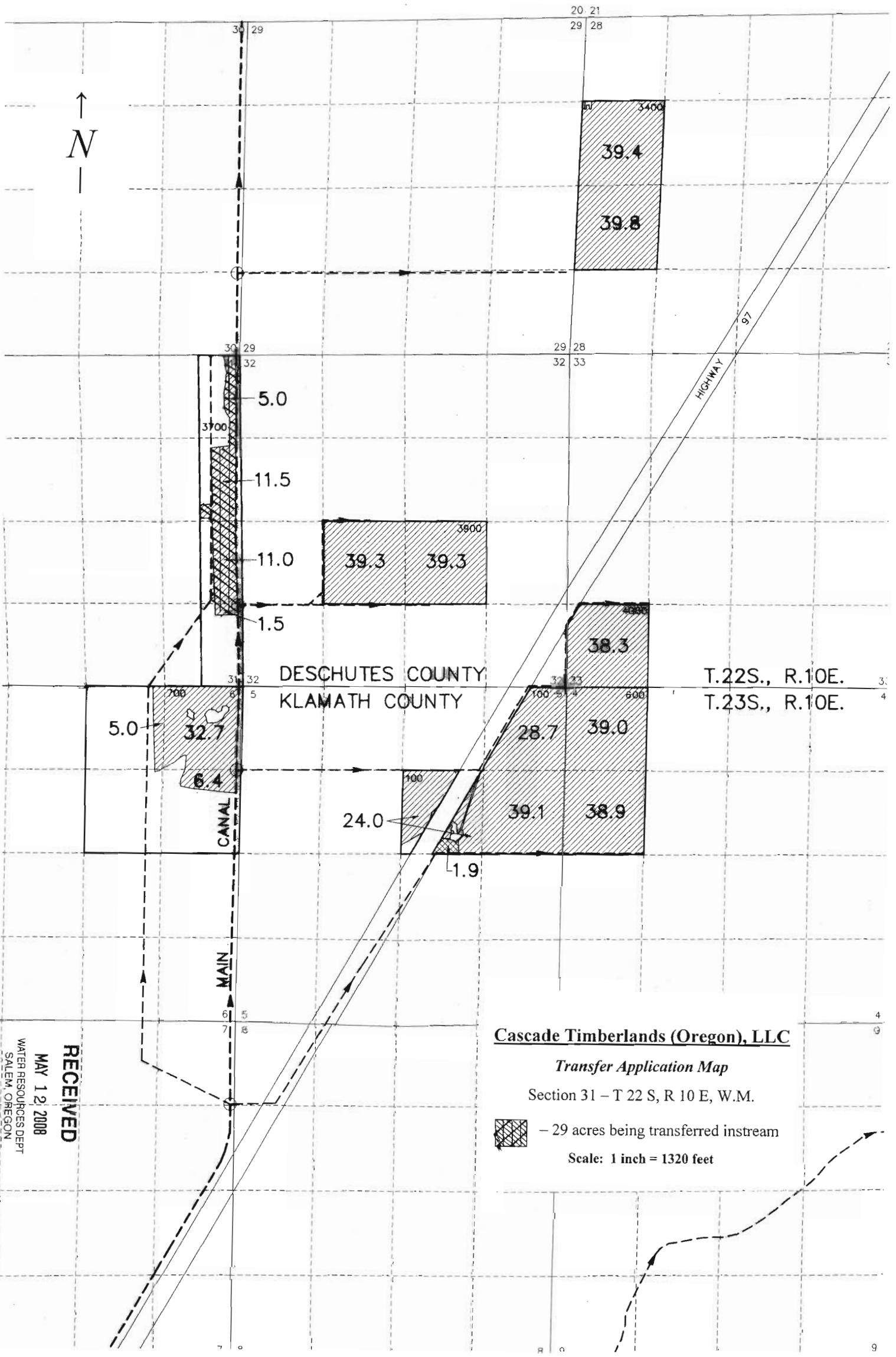


T.23S., R.9E.
T.24S., R.9E.

NORTH
↑
SCALE 1" = 100'
DATE 08/20/04

	1897 RIGHTS
	1902 RIGHTS
	1907 RIGHTS
	TAX LOT NUMBER

DEA
DAVID EVANS AND ASSOCIATES, INC.
209 NW WALL STREET, SUITE 402
BEND, OREGON 97701 (503) 338-1014




DESCHUTES COUNTY
KLAMATH COUNTY

T.22S., R.10E.
T.23S., R.10E.

Cascade Timberlands (Oregon), LLC

Transfer Application Map

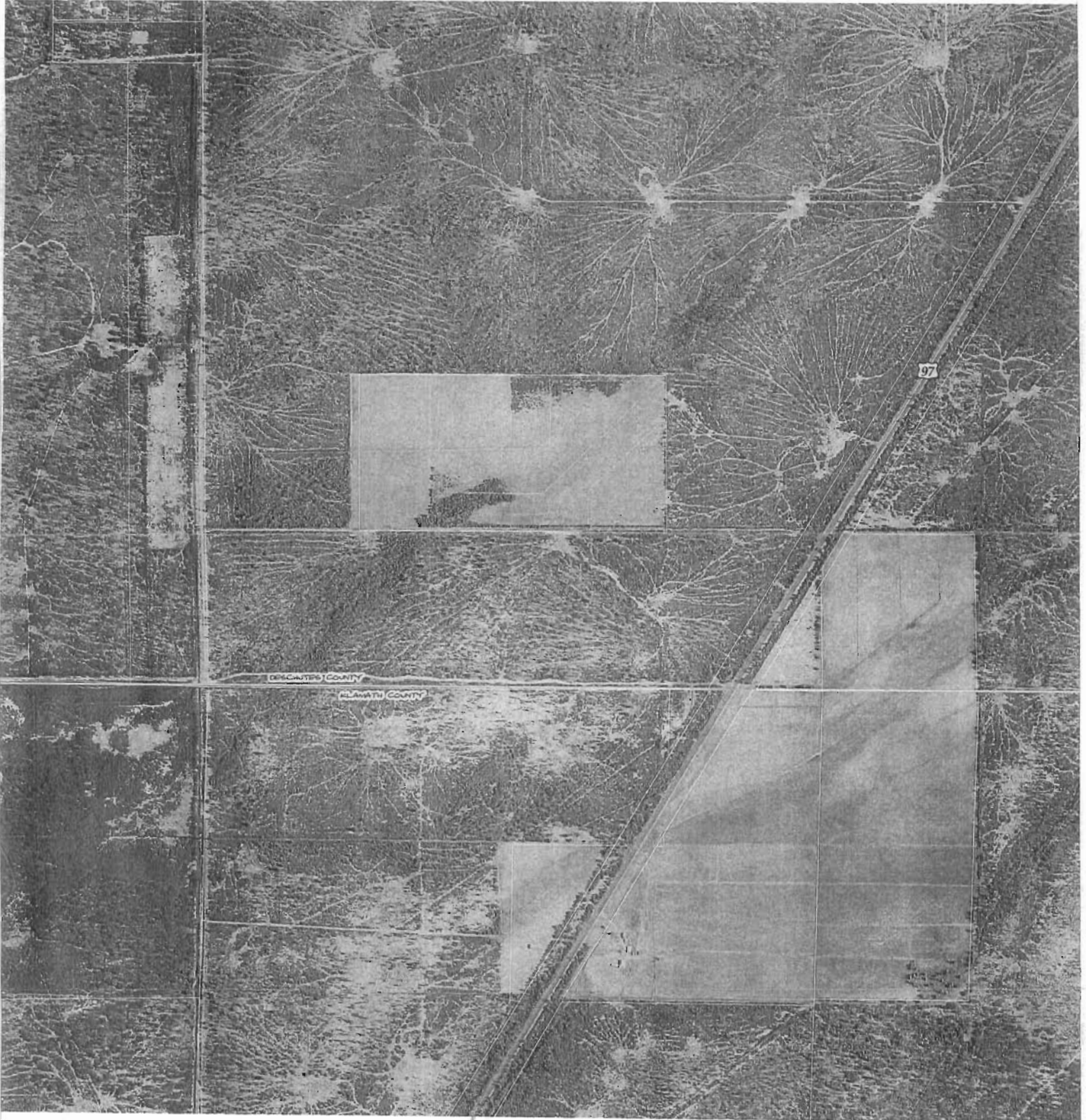
Section 31 - T 22 S, R 10 E, W.M.

 - 29 acres being transferred instream

Scale: 1 inch = 1320 feet

RECEIVED
MAY 12 2008
WATER RESOURCES DEPT
SALEM, OREGON

RECEIVED
MAY 12 2008
WATER RESOURCES DEPT
SALEM, OREGON

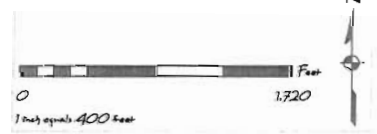




RECEIVED

MAY 12 2008

WATER RESOURCES DEPT
SALEM, OREGON



EX10

DRAWN BY: LAG APPROVED BY: _____
LAST EDIT: 04.22.08 PLOT DATE: 04.22.08

CASCADE PARTNERS
DESCHUTES AND WAMATH COUNTIES, OREGON

AERIAL PHOTO
JUNE 22 2004

2008.03.06/11.0000 BASE TEMPLATE

WHPacific