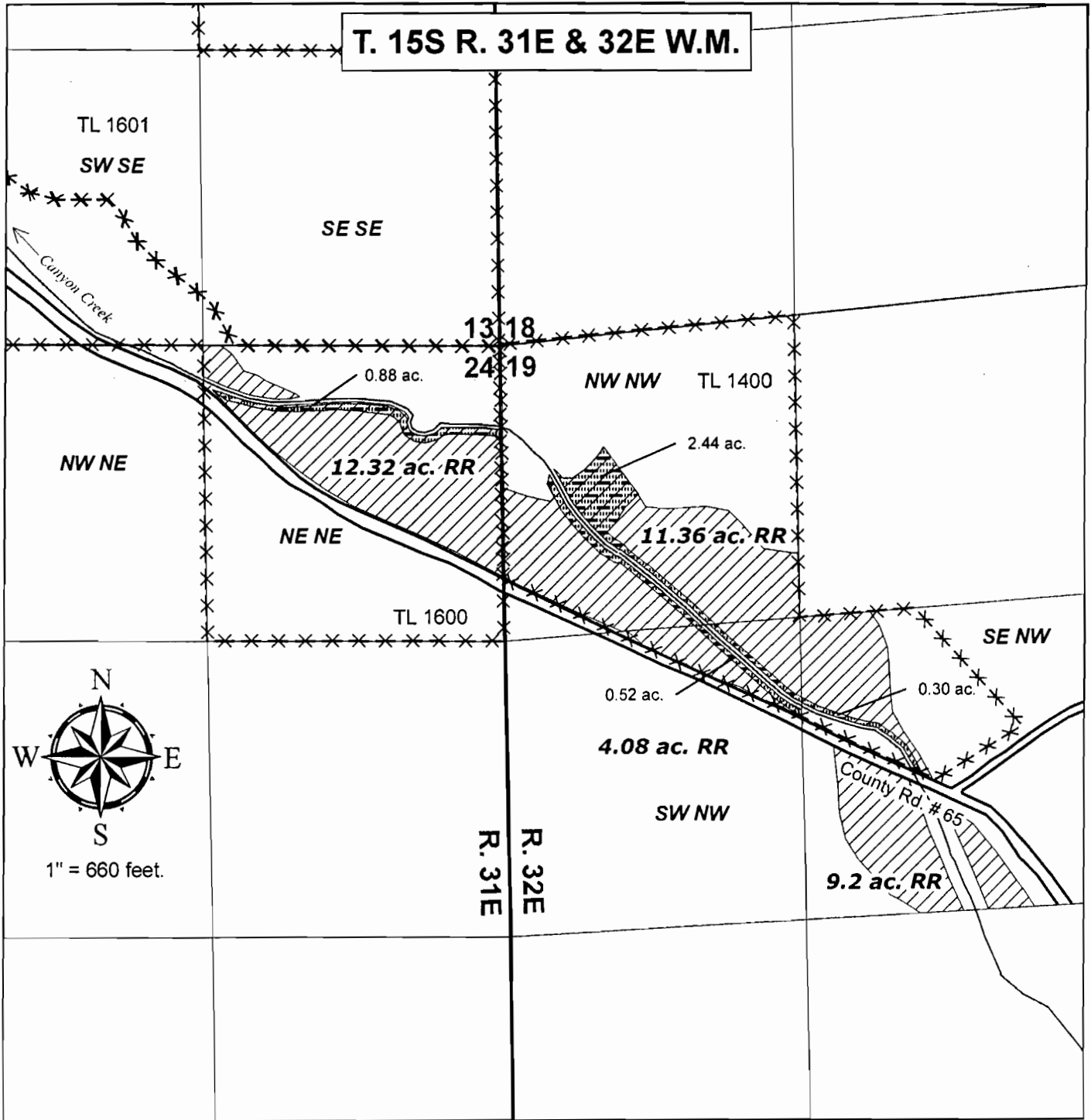


**FROM LANDS (Map 1 of 2)
Temporary Transfer Application Map
For Grant Union School District #3**



A total of 4.14 acres is proposed to transfer from C-55994 being within the boundaries shown.

- *** Tax Lot Boundaries
- ▨ Lands under transfer
- ▧ C-55994 Remaining Rights

RECEIVED

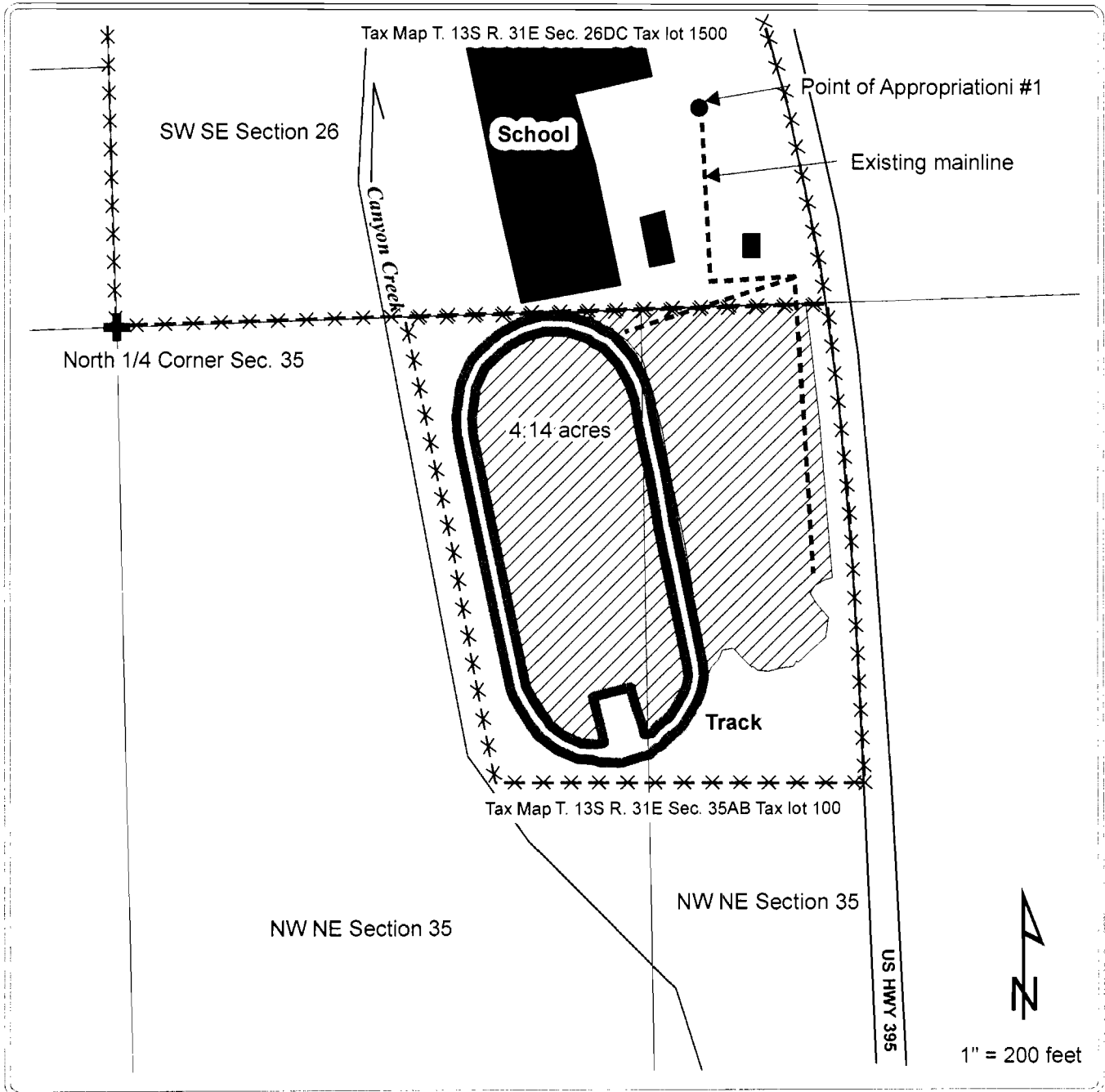
APR 24 2008

WATER RESOURCES DEPT
SALEM, OREGON

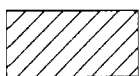
T 10608

Temporary Transfer Application Map For Pete R. and Wendy G. Rawlins / PW Cow Co., Inc.

T. 13S R. 31E Section 35 W. M.



Point of appropriation #1 is located 245 feet north and 728 feet east from the north 1/4 corner of section 35 T. 13S R. 31E W.M.



Proposed Place of Use

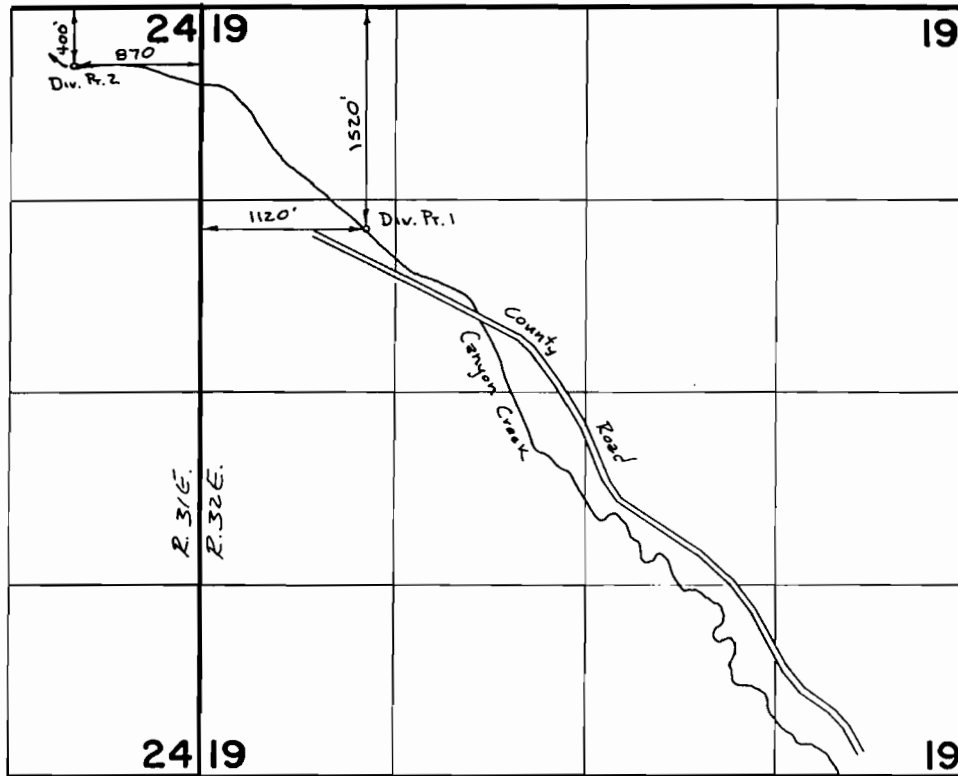
RECEIVED

APR 24 2008

WATER RESOURCES DEPT
SALEM, OREGON

T 10608

T. 15 S., R. 31 & 32 E., W.M.



SCALE 1" = 1320'

FINAL PROOF SURVEY

UNDER

TRANSFER 5165

IN NAME OF

A-BAR-L RANCH

Surveyed 4-9-1984, by L. Tollett

RECEIVED

APR 24 2008

**WATER RESOURCES DEPT
SALEM, OREGON**

T 10608

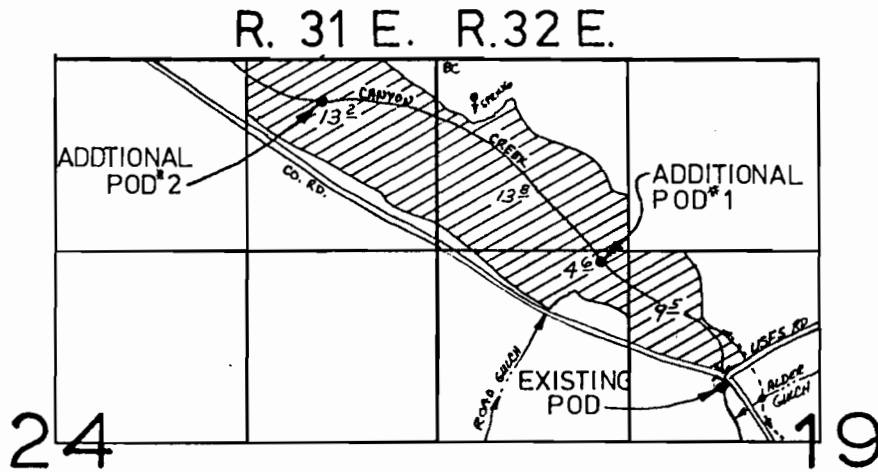
T-5165
S.O. V. 37 P. 53

T.15 S., R. 31 & 32 E., W.M.

APPLICATION MAP FOR

A - BAR - L RANCH

by King Williams



Existing POD for Canyon Creek:

2050 ft S & 1950 ft E from NW cor
Sec. 19, T15S, R32E, WM

Additional POD's from Canyon Creek:

#1- 1400 ft S & 1120 ft E,

#2 300 ft S & 780 ft W,

both from NW cor Sec. 19, T15S, R32E, WM

APPROVED

RECEIVED

APR 24 2008

WATER RESOURCES DEPT
SALEM, OREGON

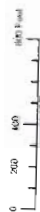
RECEIVED

NOV 26 1982

WATER RESOURCES DEPT.
SALEM, OREGON

T 10608

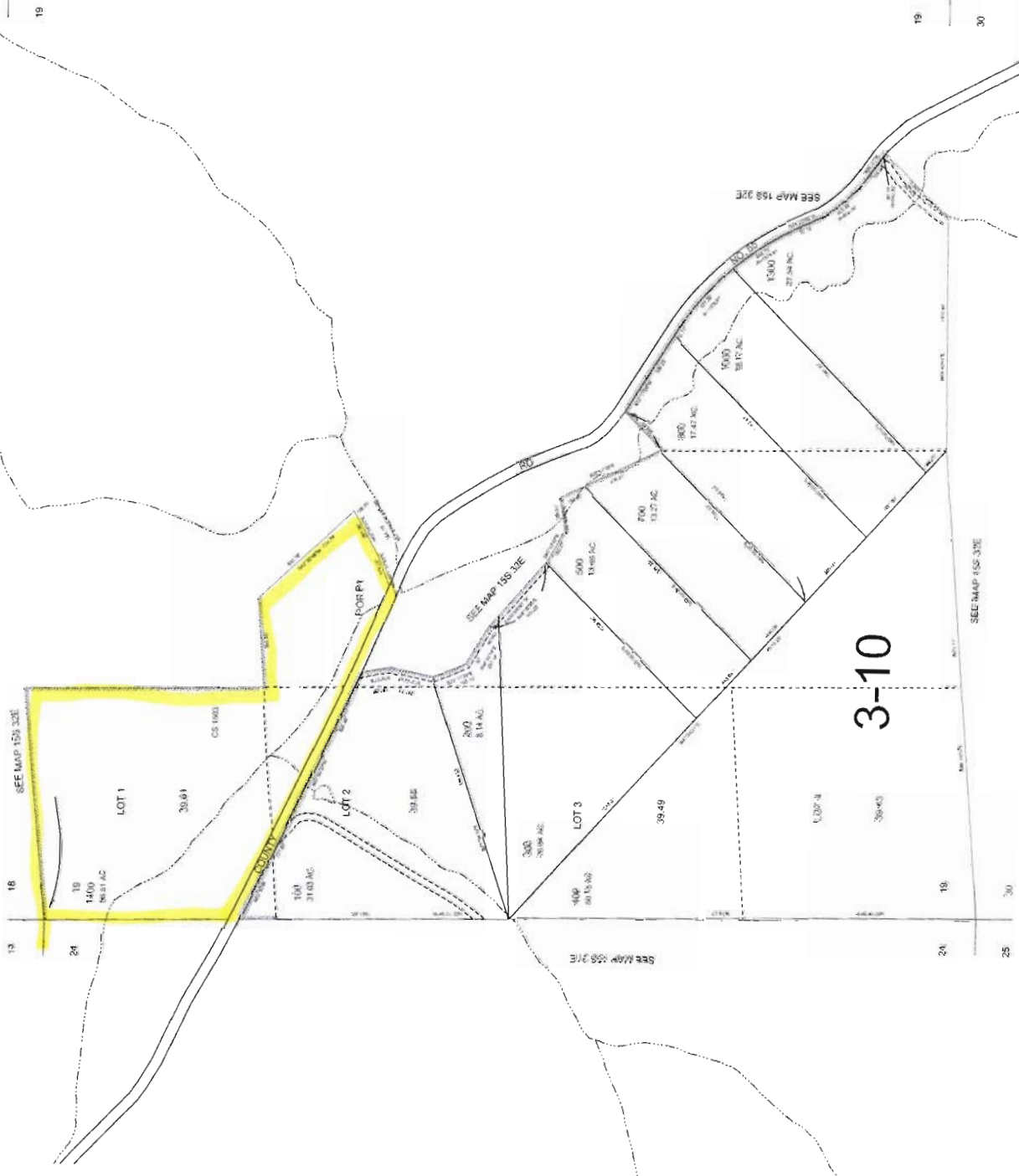
THIS MAP WAS PREPARED FOR ASSIGNMENT PURPOSE ONLY



From lands

SECTION 19, T.15S, R.32E, W.M.
GRANT COUNTY

15S32E19



Released 01/2023 203/00

15S32E19

RECEIVED

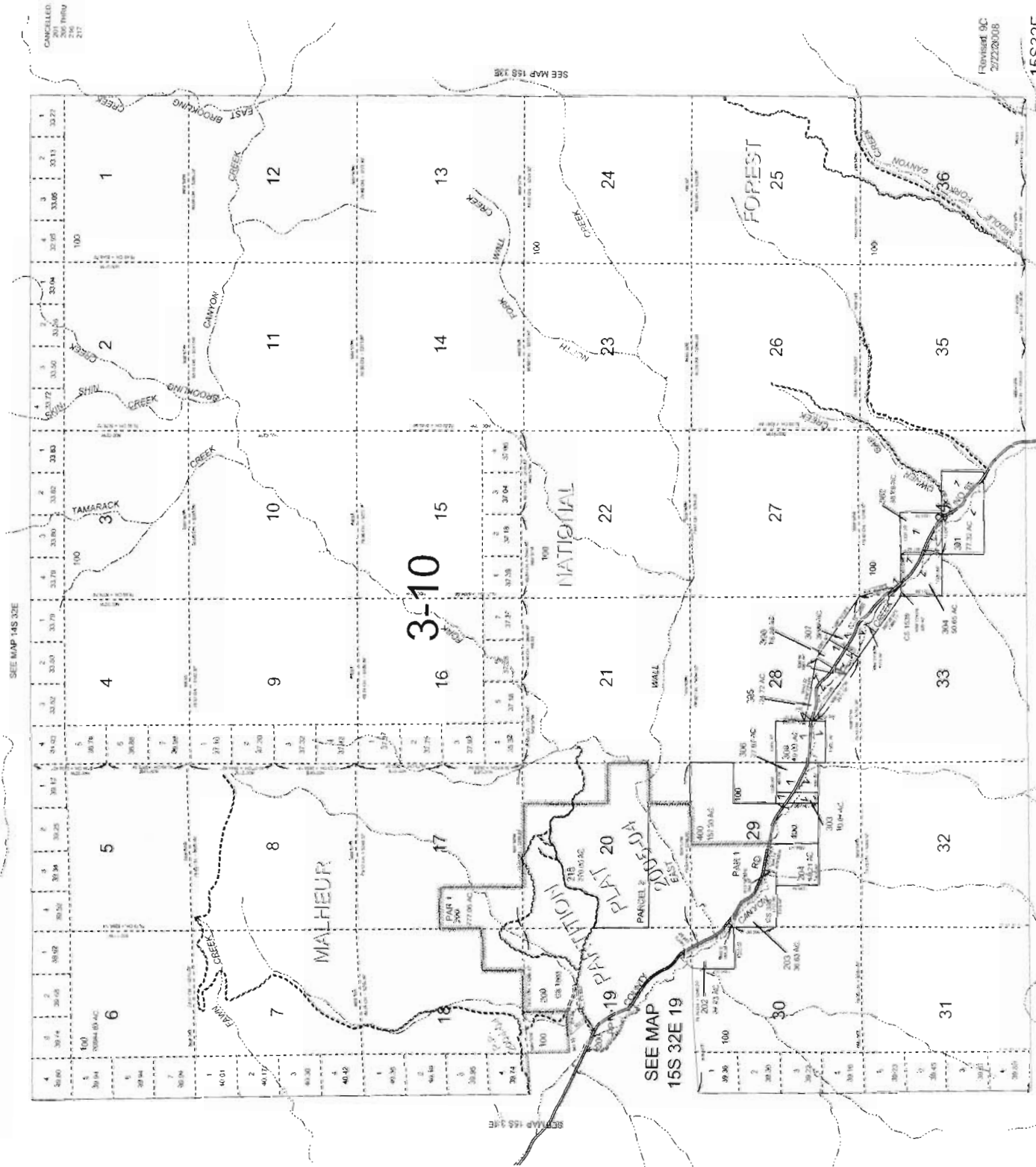
APR 24 2008

WATER RESOURCES DEPT
SALEM, OREGON

T 10608



THIS MAP WAS PREPARED FOR
ASSESSMENT PURPOSES ONLY



SEE MAP 14S 32E

SEE MAP 14S 32E

SEE MAP 14S 32E

CANCELLED
201
205
206
210
211
212
217

3-10

SEE MAP
15S 32E 19

RECEIVED

APR 24 2008

WATER RESOURCES DEPT
SALEM, OREGON

T 10608

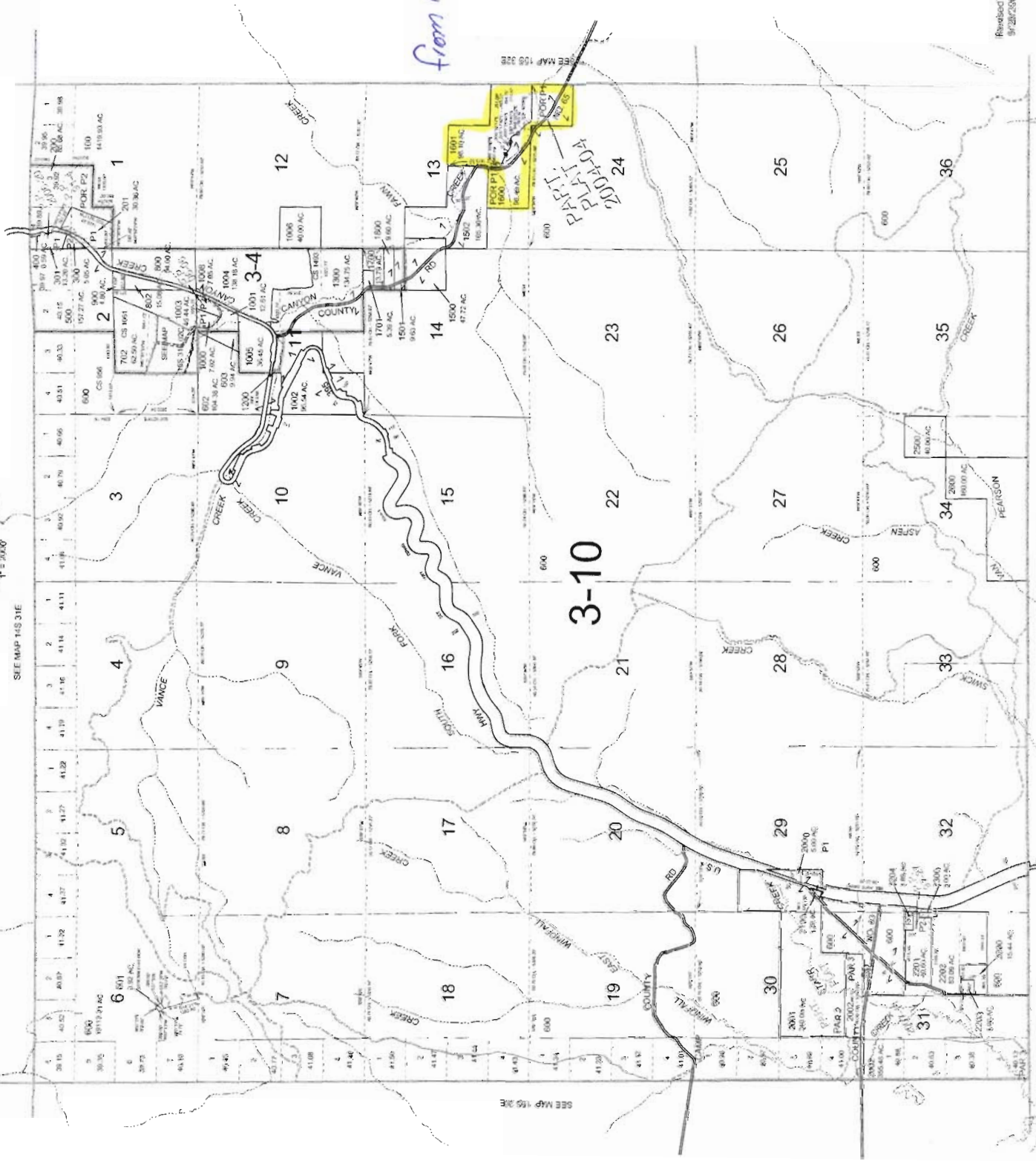
THIS MAP WAS PREPARED FOR
ASSESSMENT PURPOSE ONLY

0 1000 2000 4000 Feet

T.15S. R.31E. W.M.
GRANT COUNTY
T = 2000'

15S 31E

SEE MAP 14S 31E



SEE MAP 16S 31E

Revised CS
9/28/2007

15S 31E

RECEIVED

APR 24 2007

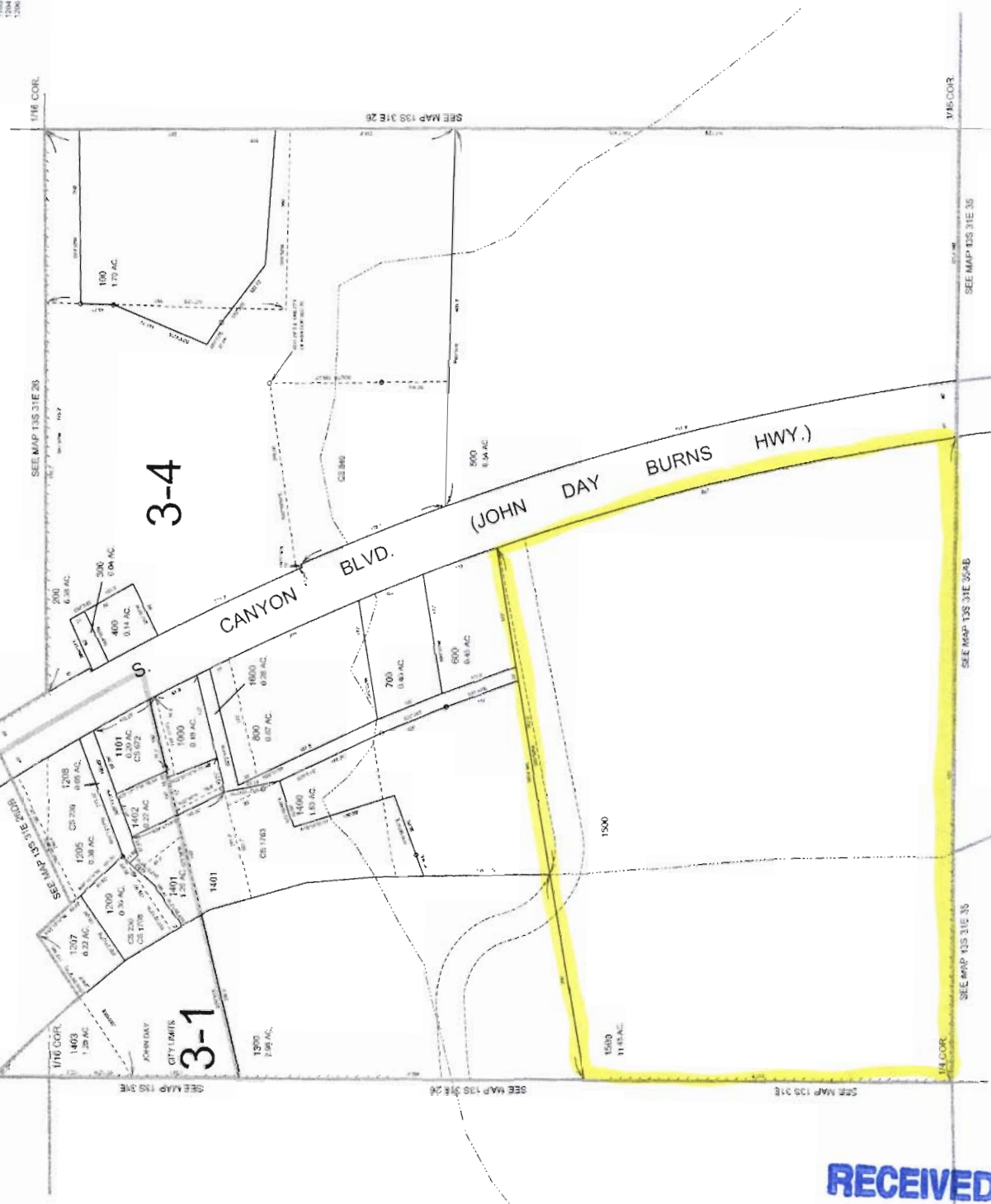
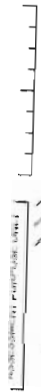
WATER RESOURCES DEPT
SALEM, OREGON

T 10608

SW1/4 SE1/4 SECTION 26 T.13S. R.31E. W.M.
GRANT COUNTY
T = 100'

13S 31E 26DC
CANYON CITY, JOHN DAY
CANCELLED NO.

111
900
262
1200
1201
1202
1203
1204
1205



116 COR.

SEE MAP 13S 31E 28

SEE MAP 13S 31E 26

116 COR.

SEE MAP 13S 31E 30

SEE MAP 13S 31E 34B

SEE MAP 13S 31E 35

116 COR.

3-4

3-1

CANYON BLVD. (JOHN DAY BURNS HWY.)

RECEIVED

APR 24 2008

WATER RESOURCES DEPT
SALEM, OREGON

Land
TO

Revised CS
8/8/2007

13S 31E 26DC
CANYON CITY, JOHN DAY

T 10608

THIS MAP WAS PREPARED FOR
ASSESSMENT PURPOSE ONLY

0 30 60 90 120 Feet

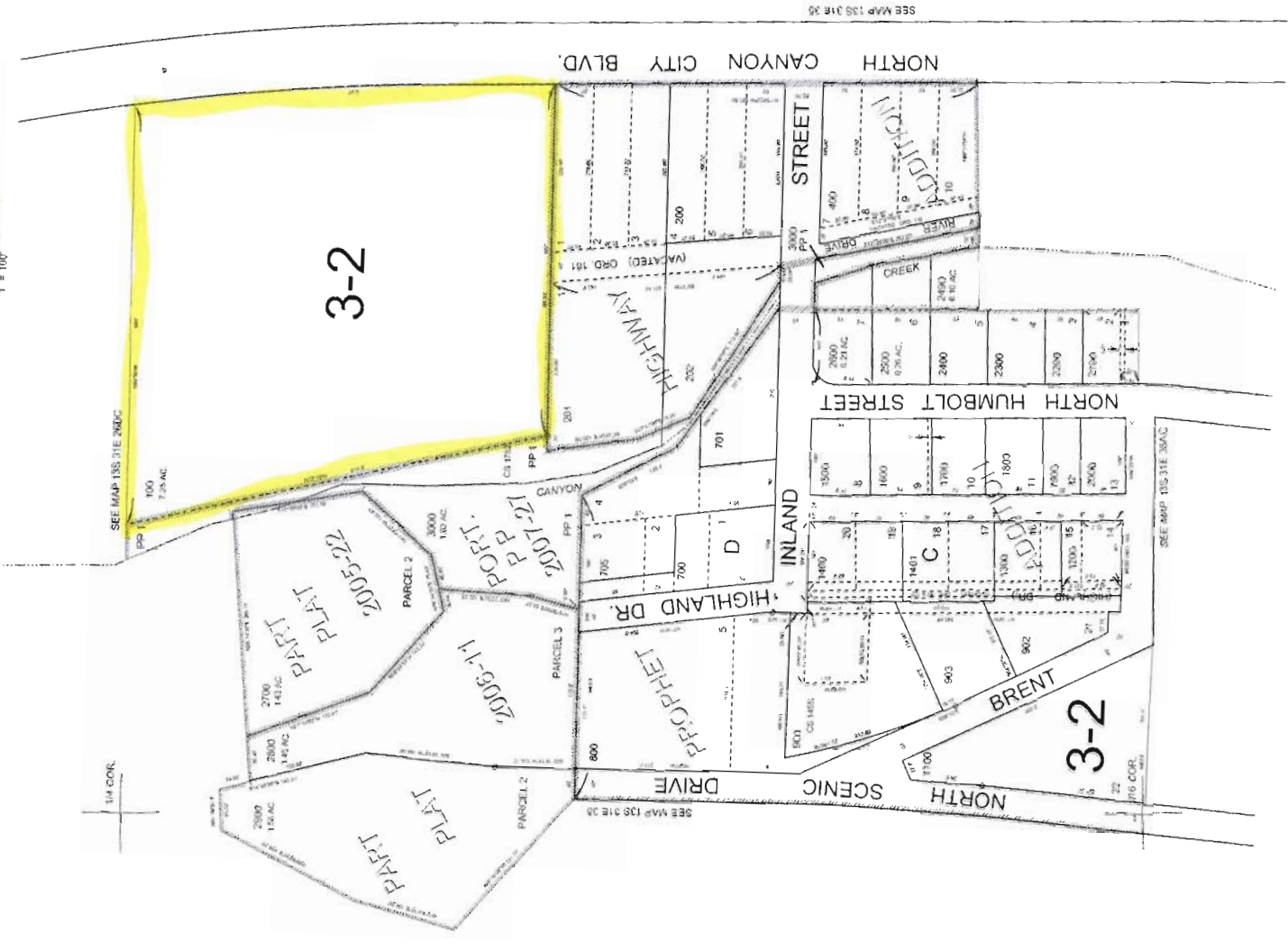
N.W. 1/4 N.E. 1/4 SEC. 35 T. 13S. R. 31E. W.M.
GRANT COUNTY
T = 100'

13S31E35AB
CANYON CITY

CANCELLED:
500
501
502 THRU
704
904
1000
2500



*TO
lands*



SEE MAP 13S 31E 35



Revised 9C
2/22/2008

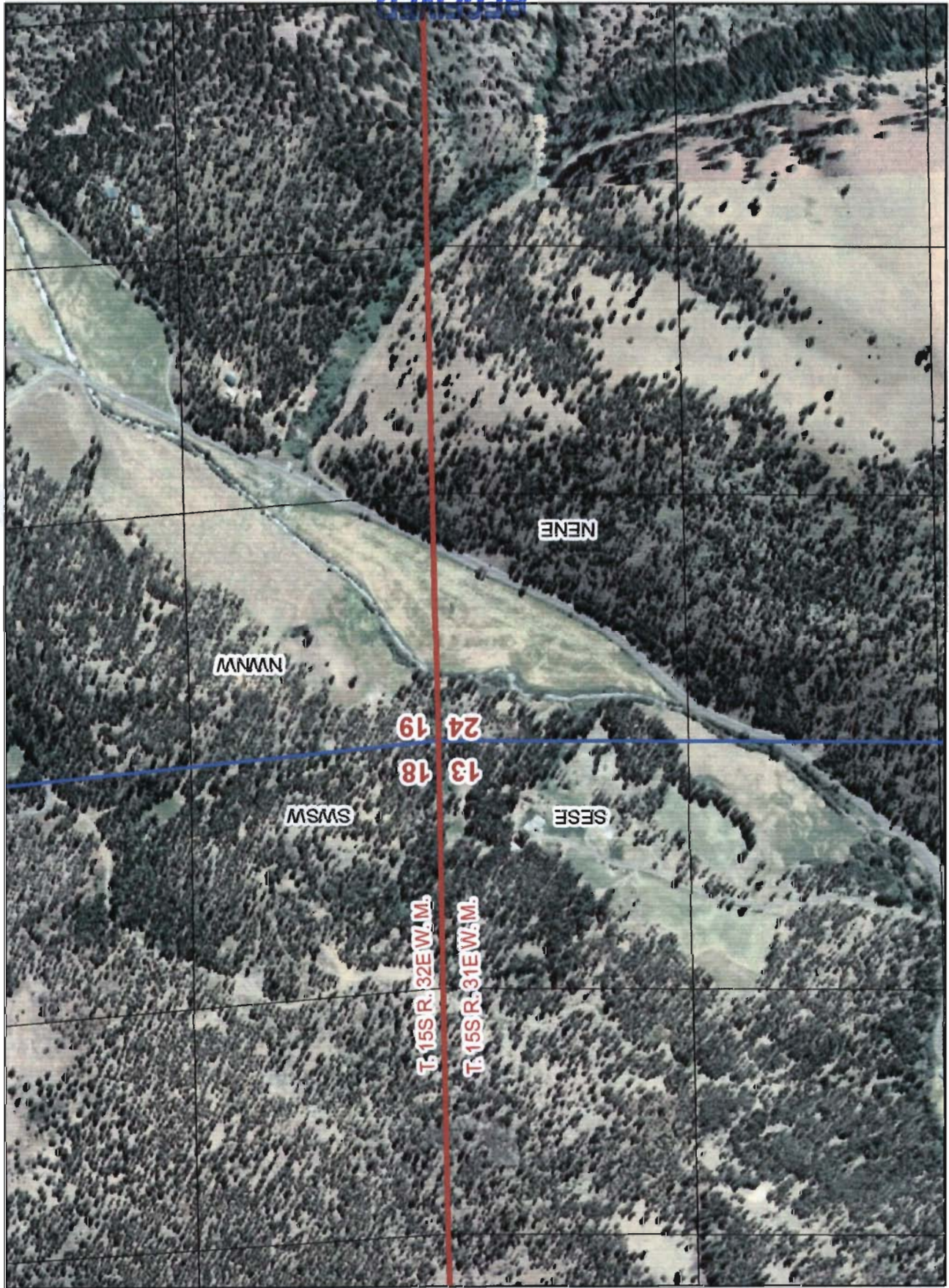
CANYON CITY
13S31E35AB

RECEIVED

APR 24 2008

WATER RESOURCES DEPT
SALEM, OREGON

T 10608



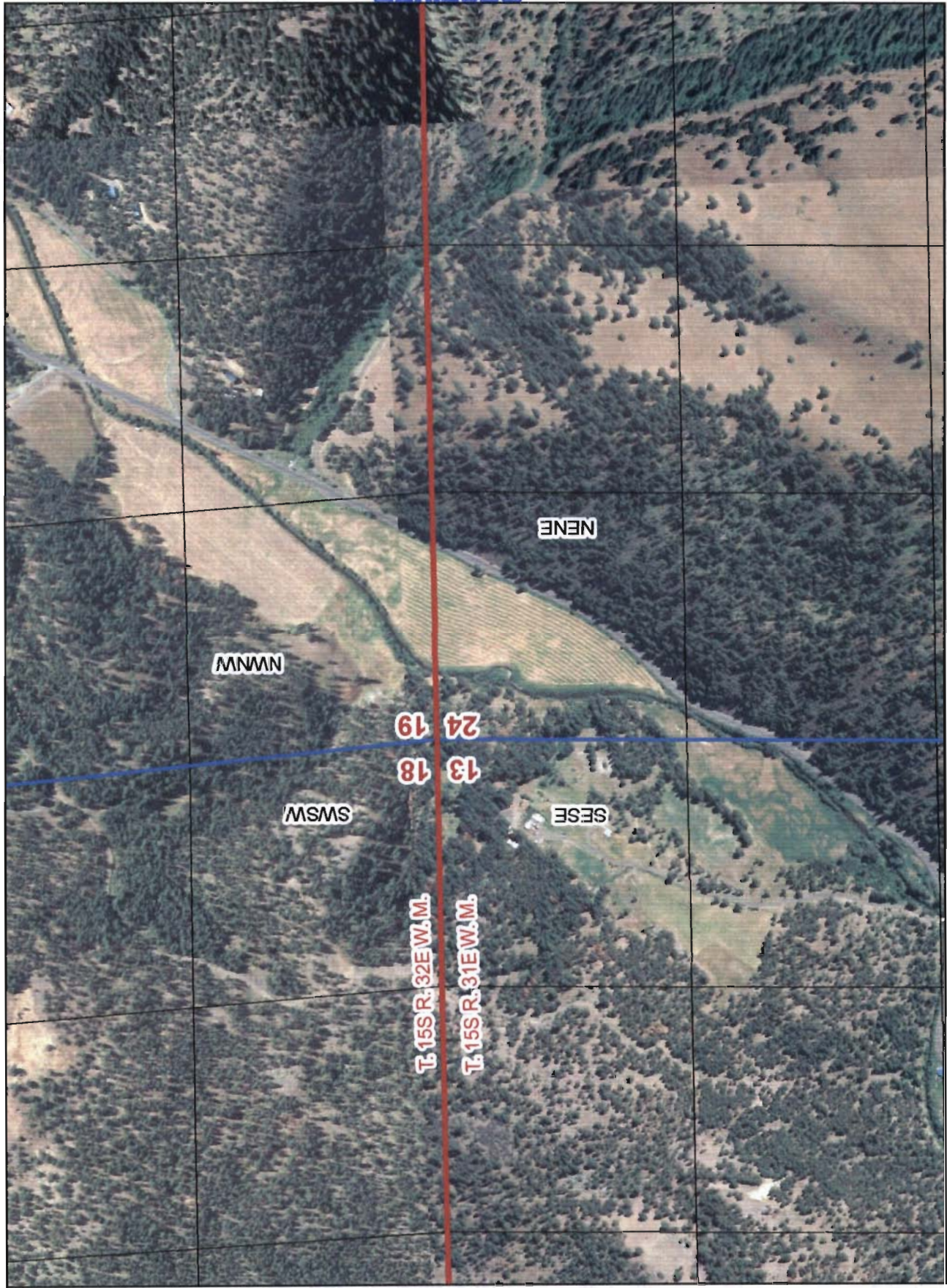
RECEIVED

APR 24 2008

WATER RESOURCES DEPT
SALEM, OREGON

T 10608

2006 FSA Color Aerial Photo



RECEIVED

APR 24 2008

T 10608

2005 FSA Color Aerial Photo

WATER RESOURCES DEPT
SALEM, OREGON