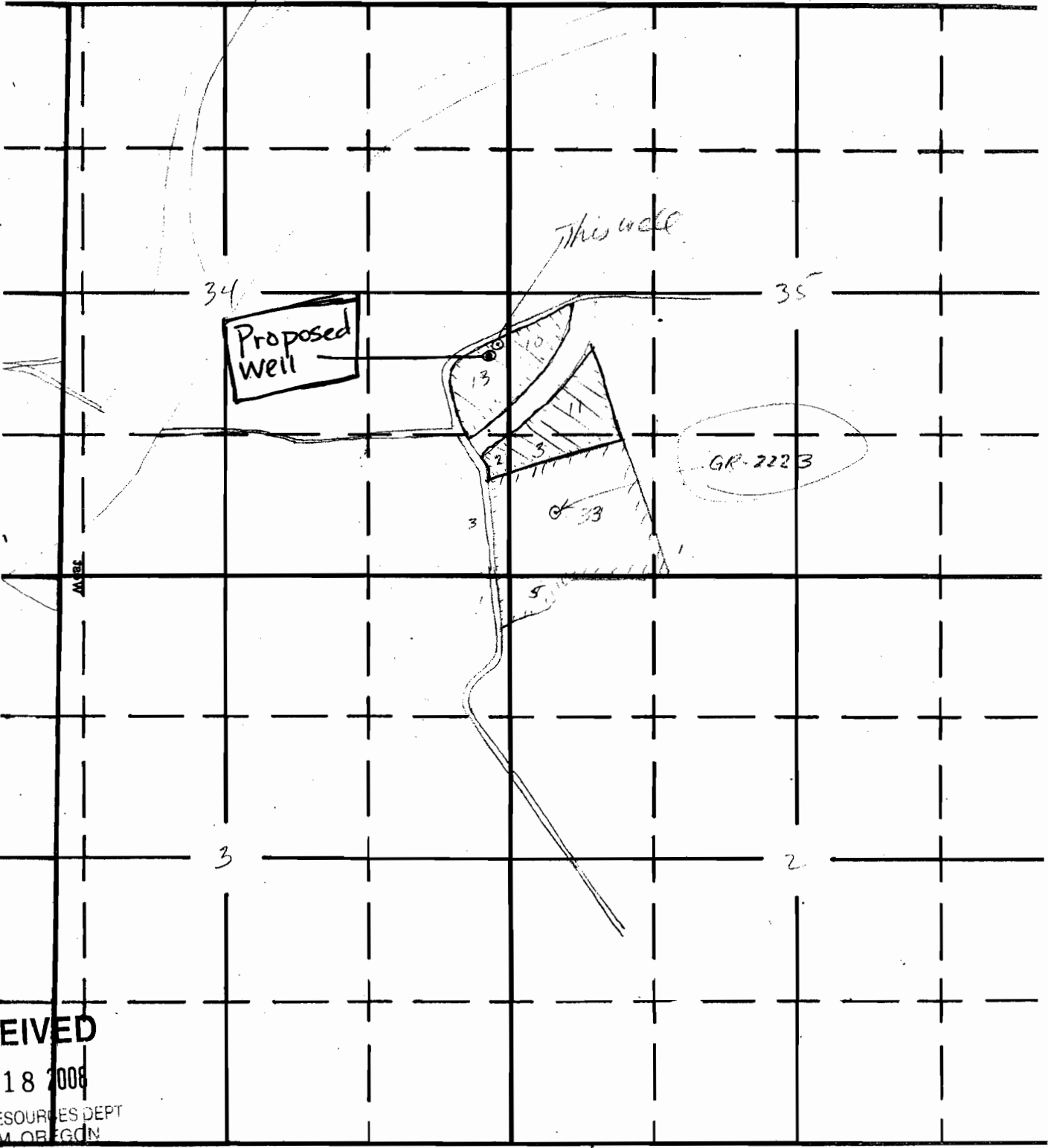


# GR Mod Appl. Map

TOWNSHIP 55, RANGE 34, W. M.

North



North

Scale approx.  
1" = 1320'

RECEIVED

JUN 18 2008

WATER RESOURCES DEPT  
SALEM, OREGON

South

Proposed Well: 115 ft. West and 480 ft. South from the E 1/4 corner of Sec. 34.



= GR Appl# GR-2224  
Place of Use

GR2224  
Map from