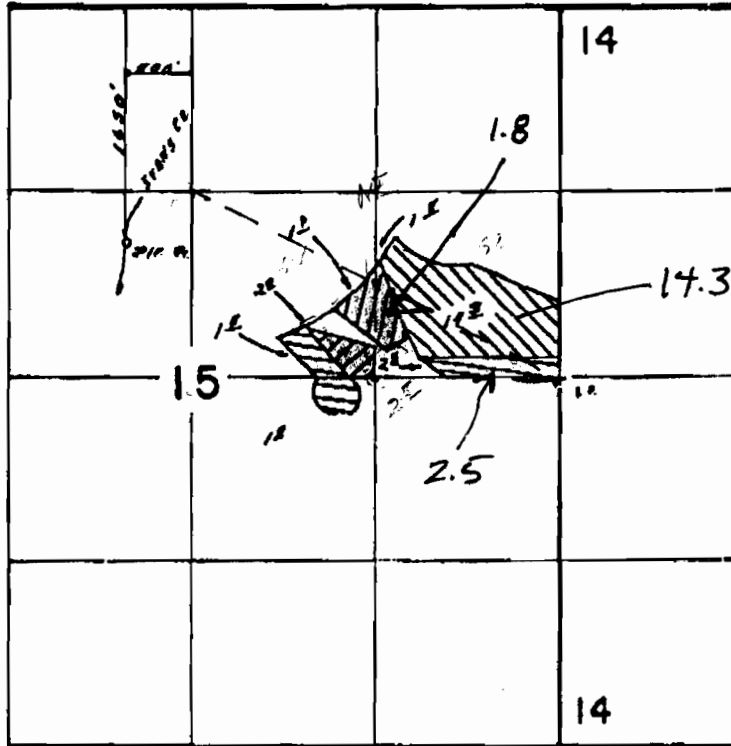


T. 35 S., R. 4 W., W. M.



1
14.3
1.8
2.5

18.6



- T-5195 = 56490 0.0 Scale: 1"=1320'
- T-5196 = 56489 1.8 Partion
- T-5197 = 57576 14.3 Entire
- T-5214 = 57709 0.6 Partion UNDER
57577 1.9 Partion Entirety

RECEIVED

JUN 16 2008

WATER RESOURCES DEPT
SALEM, OREGON

TRANSFERS NO. 5195, 5196, 5197, 5214, 4384

Application No. Permit No.

IN NAME OF

JAMES H. & LOTTIE L. MARTIN

Surveyed F.E.B...I.I.. 1986, by B...S...JAMES

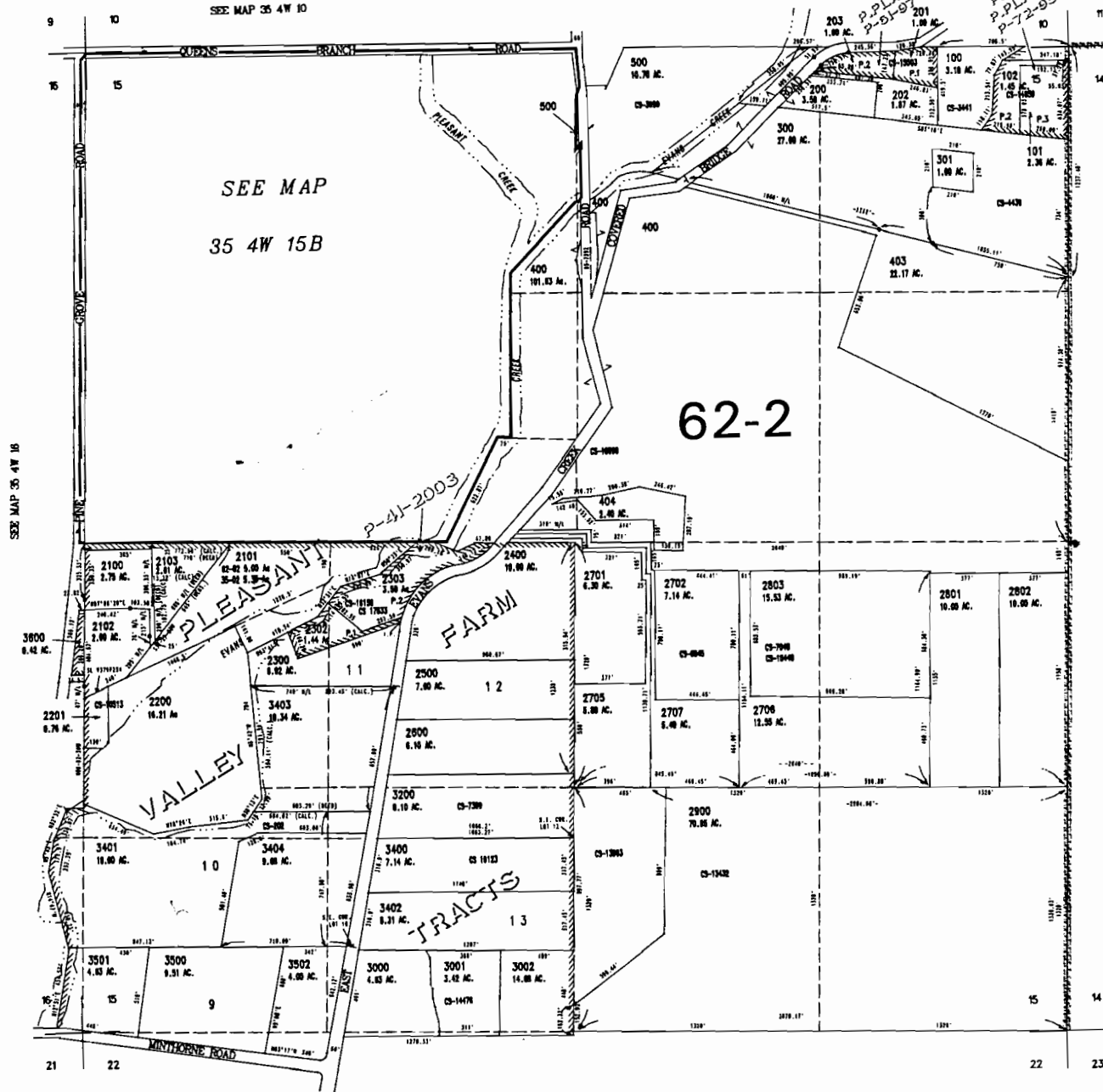
THIS MAP WAS PREPARED FOR
ASSESSMENT PURPOSE ONLY

SECTION 15 T36S. R4W. W.M.
JACKSON COUNTY

1" = 400'

35 4W 15
& INDEX

SEE MAP 35 4W 10D



METFILE X:\MAP\354W\15\0\00 PLAT.CRA
CREATED FRIDAY MARCH 31, 2006 7:40 AM BY: GIBSONJO

WATER RESOURCES DEPT
SALEM, OREGON

JUN 16 2008

RECEIVED

35 4W 15
& INDEX
DOR CONVERSION AUGUST 26, 2003
REV. MARCH 26, 2005