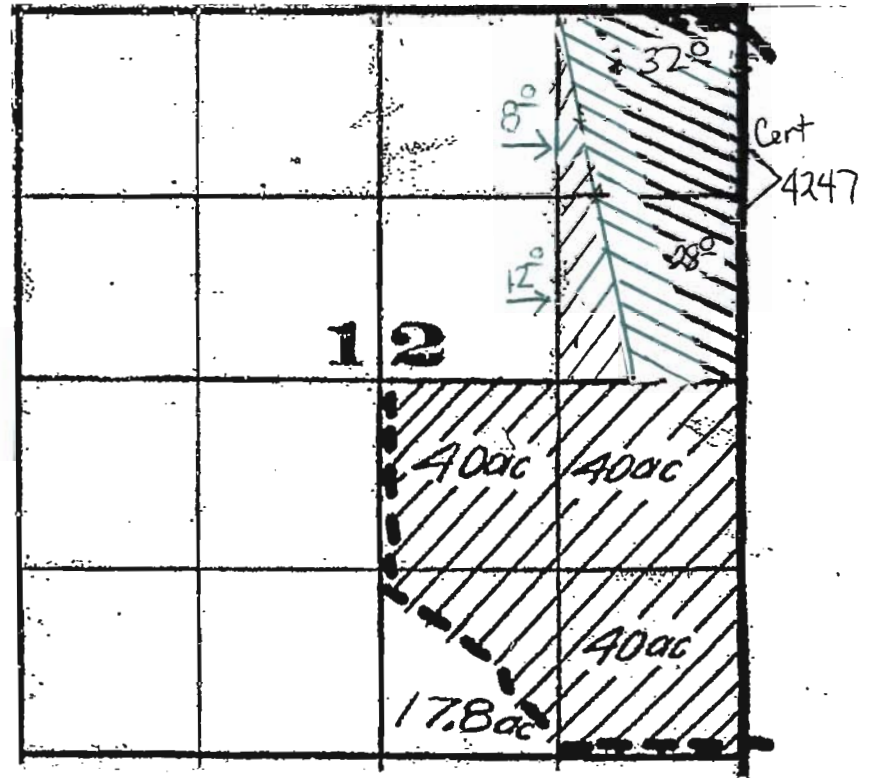


Amended 6/25/08  
5 year Temporary Transfer For Craig Ward  
"TO MAP" Map 2 of 2

N ↑

9s 39E Scale 4" = 1 mile



Remaining  
Cert 4247

Fol Cert  
73529

RECEIVED

JUN 30 2008

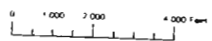
WATER RESOURCES DEPT  
SALEM, OREGON

RECEIVED

JUN 23 2008

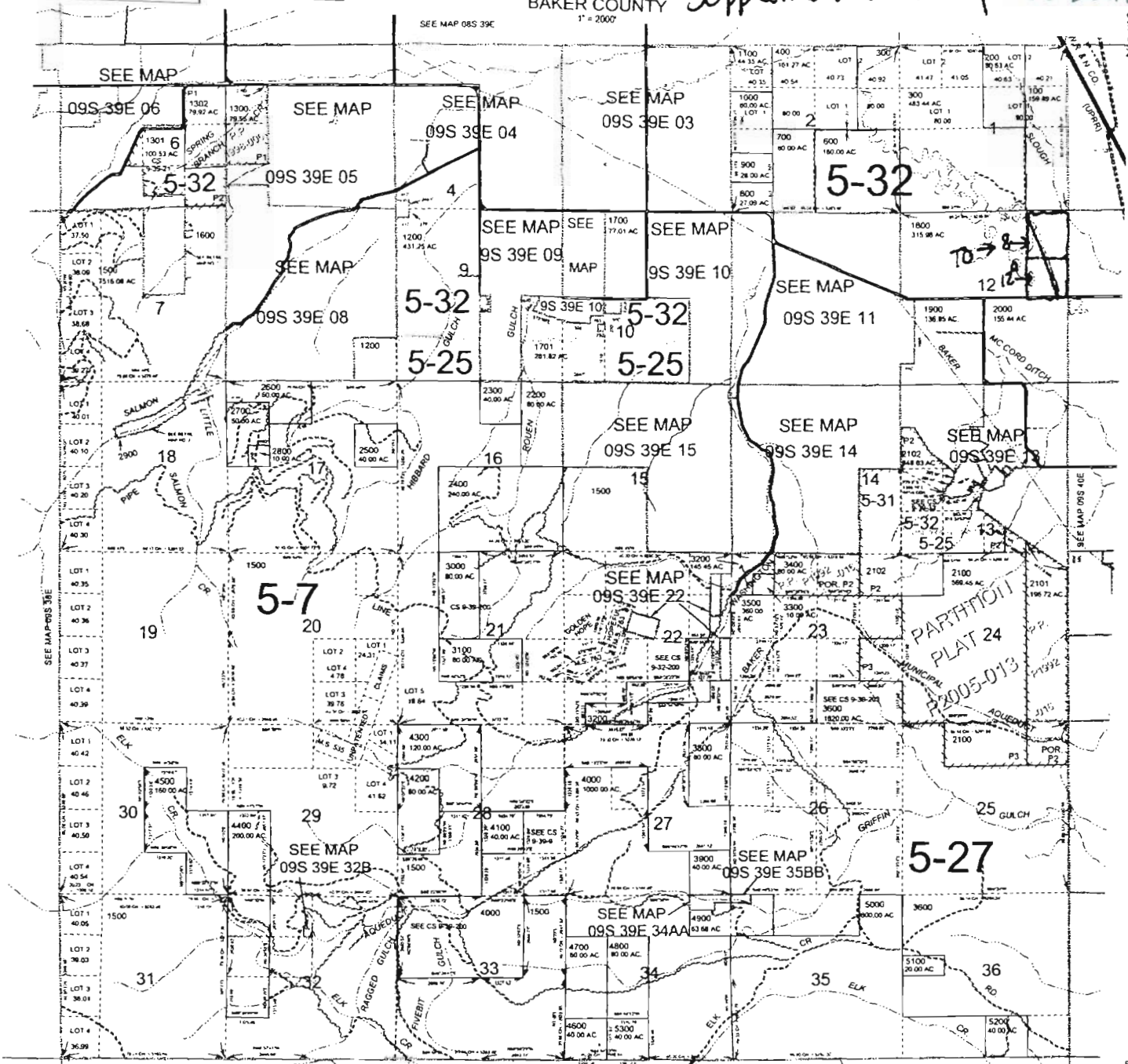
WATER RESOURCES DEPT  
SALEM, OREGON

THIS MAP WAS PREPARED FOR ASSESSMENT PURPOSE ONLY



T.09S. R.39E. W.M. Baker County Supplemental Map "TO Lands" 09S 39E  
BAKER COUNTY  
1" = 2000'

09S 39E  
CANCELLED NO.  
500  
1500  
2000  
2500  
3000  
3500  
4000  
4500



**RECEIVED**  
JUN 30 2008  
WATER RESOURCES DEPT  
SALEM, OREGON

**RECEIVED**  
JUN 23 2008  
WATER RESOURCES DEPT  
SALEM, OREGON

SEE MAP 10S 39E

Revised DBJ  
October 06, 2007  
09S 39E

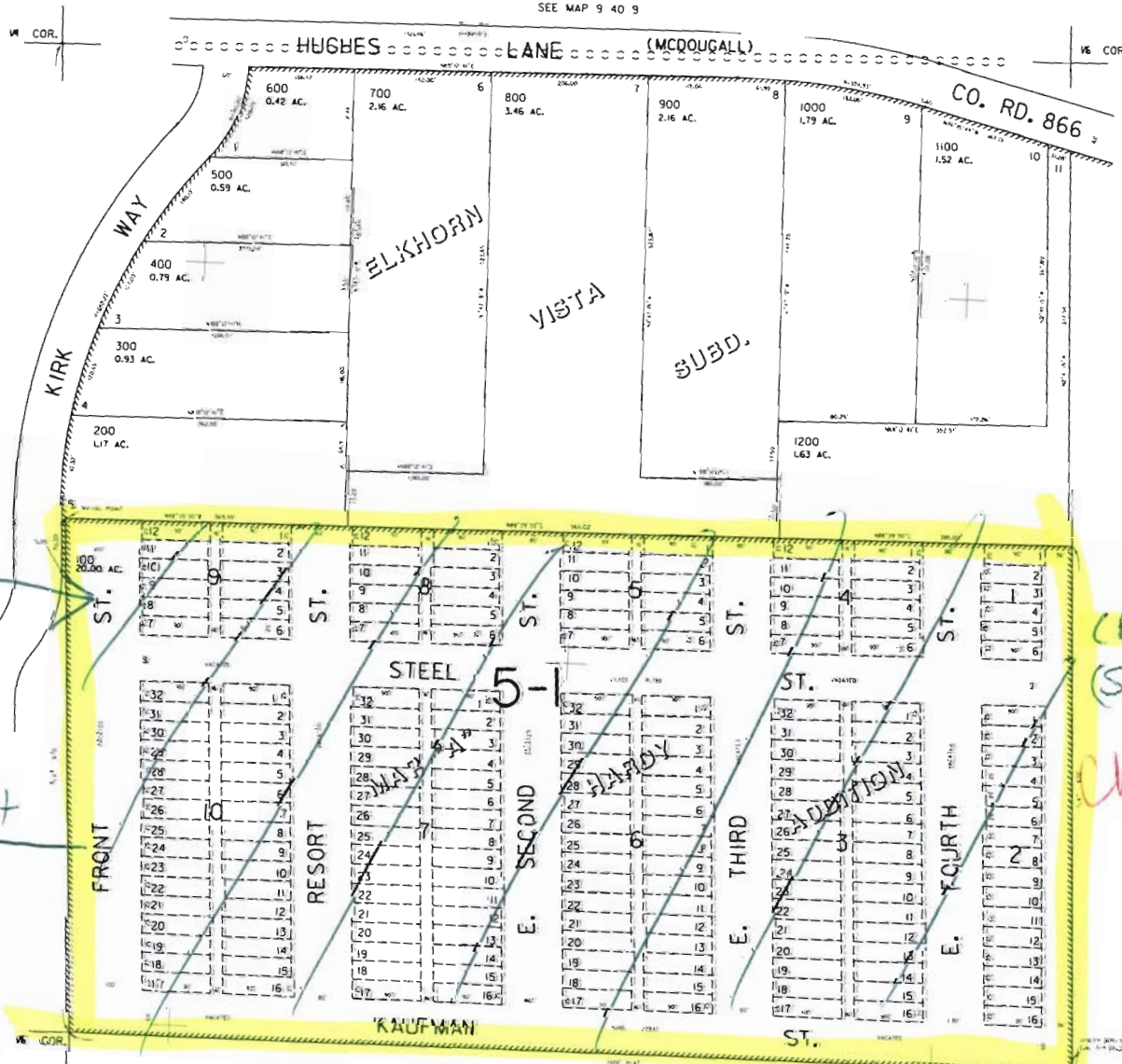
THIS MAP WAS PREPARED FOR  
ASSESSMENT PURPOSE ONLY

NW1/4 SW1/4 SEC.9 T.9S. R.40E. W.M.  
BAKER COUNTY

9 40 9CB  
BAKER

Supplemental Map "From Lands"

SEE MAP 9 40 9



From

SEE MAP 9 40 BDA

RECEIVED  
JUN 30 2008  
WATER RESOURCES DEPT  
SALEM, OREGON

(P) 20° 73529 (W)  
(S) 19° 73610 (1958)

Charlotte Ward

The supplemental right  
will not be used  
as long as it is  
without a primary  
water right.

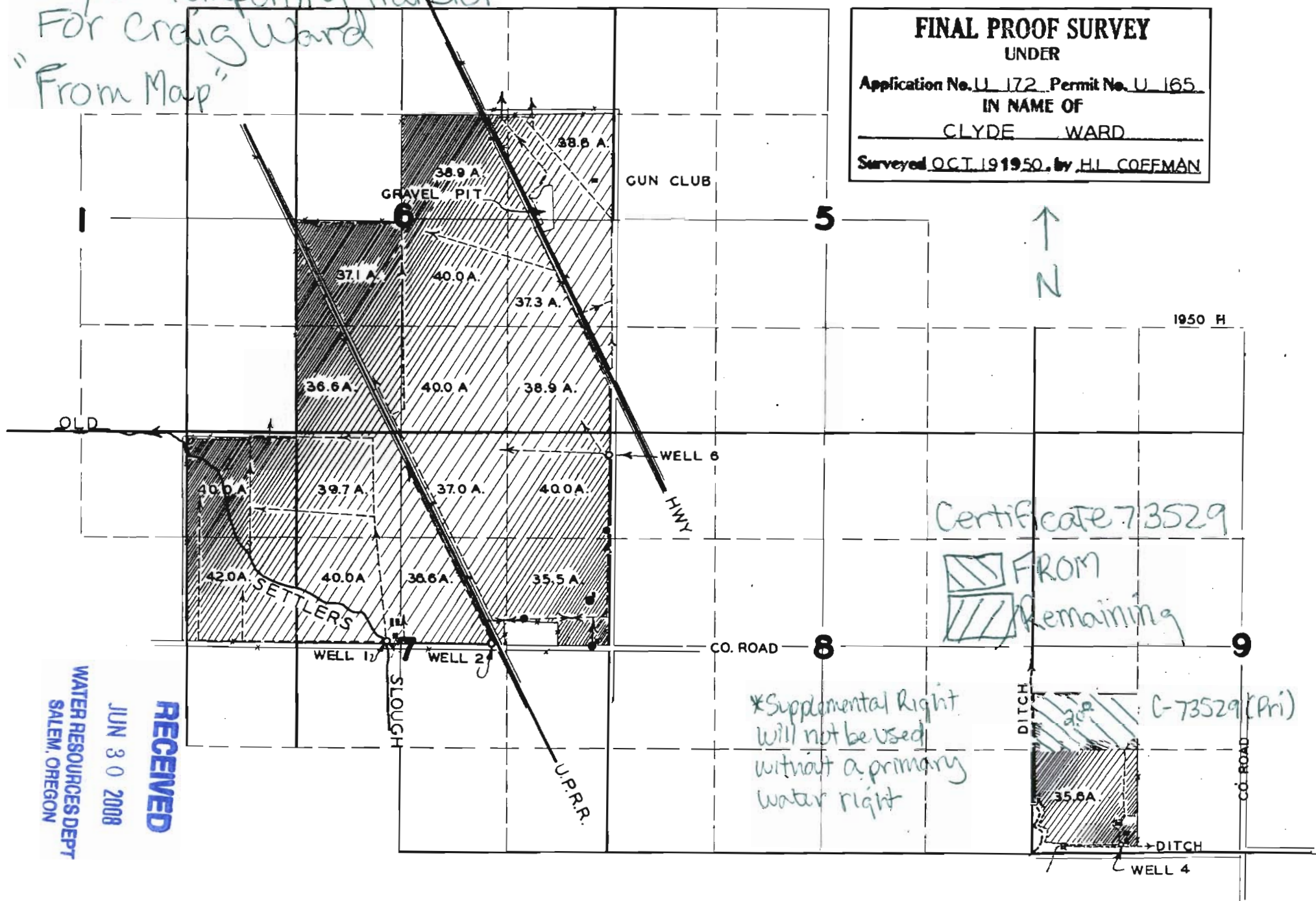
SEE MAP 9 40 9C

9 40 9CB  
BAKER

Amended Application 6/25/08 T.9S.R.40E.W.M.

5 year temporary transfer  
For Craig Ward  
"From Map"

**FINAL PROOF SURVEY**  
UNDER  
Application No. U 172 Permit No. U 165  
IN NAME OF  
CLYDE WARD  
Surveyed OCT. 19 1950, by H.L. COFFMAN



Certificate 73529

FROM  
Remaining

\*Supplemental Right  
will not be used  
without a primary  
water right

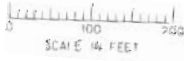
C-73529 (Pri)

RECEIVED  
JUN 30 2008  
WATER RESOURCES DEPT  
SALEM, OREGON

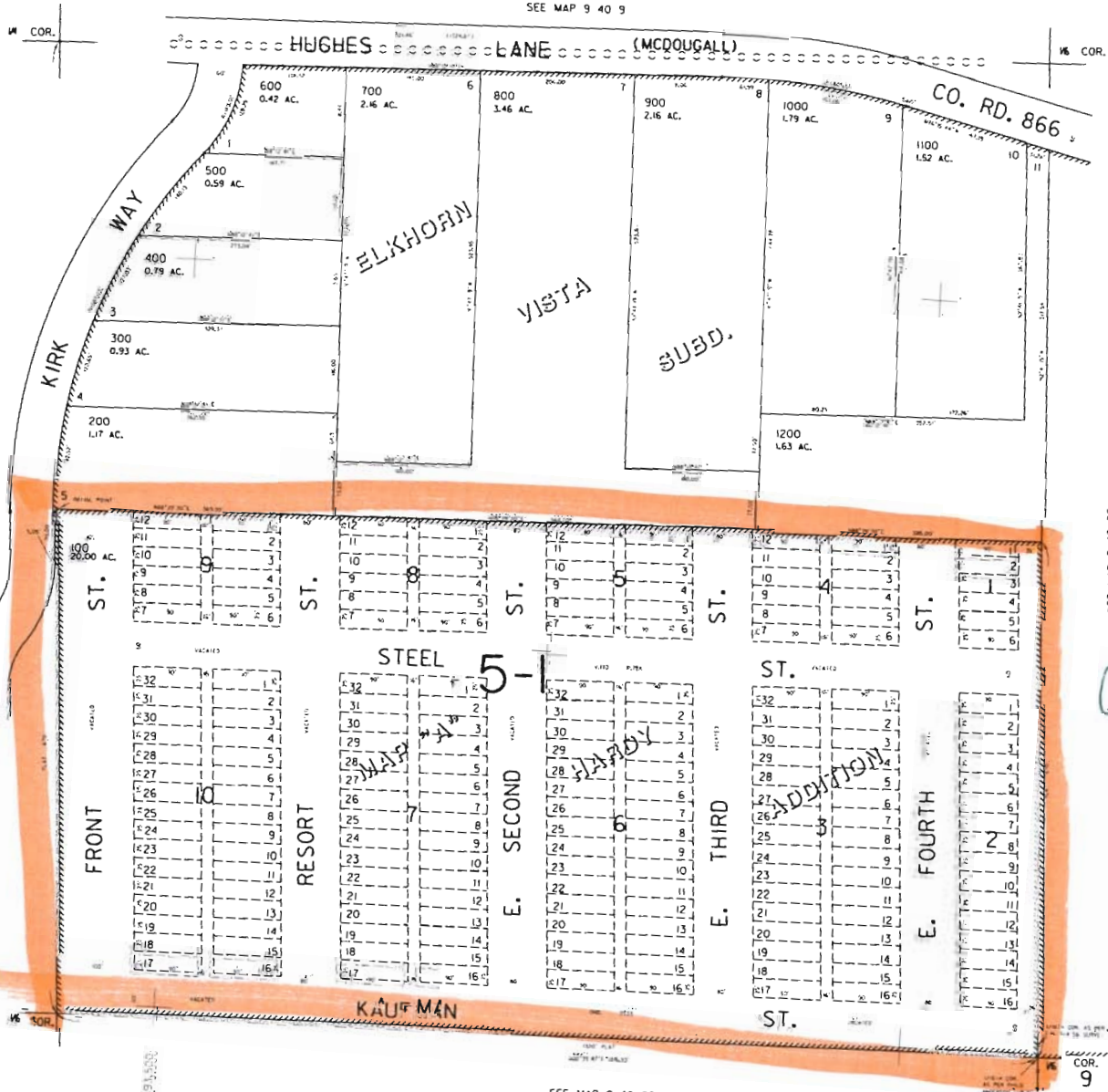
THIS MAP WAS PREPARED FOR  
ASSESSMENT PURPOSE ONLY

NW1/4 SW1/4 SEC.9 T.9S. R.40E. W.M.  
BAKER COUNTY  
1" = 100'

9 40 9CB  
BAKER



SEE MAP 9 40 8DA



SEE MAP 9 40 9

SEE MAP 9 40 9C

SEE MAP 9 40 9C

9 40 9CB  
BAKER

RECEIVED

JUN 30 2008

WATER RESOURCES DEPT  
SALEM OREGON

Charlotte  
WARD